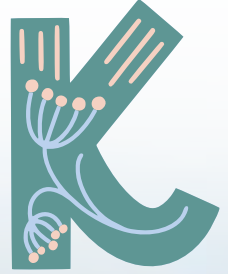
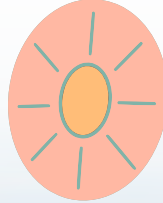
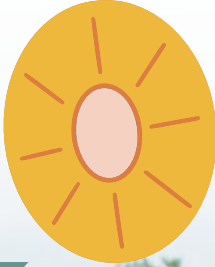
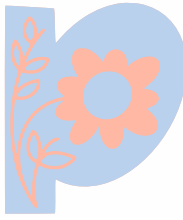
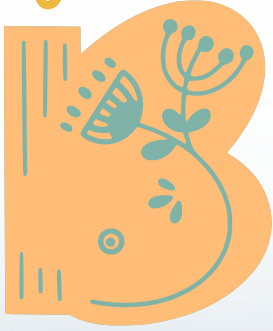


fall



2023

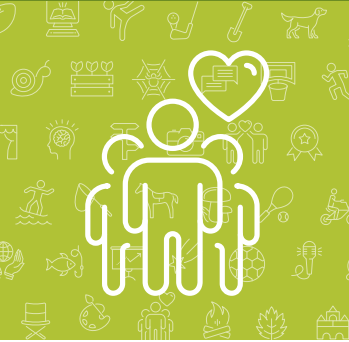


PROGRAMS + EVENTS +  
CLASSES + HOLIDAY CAMPS

*You Imagined.*  
**WE DELIVERED**



**GOLD**



**See How YOU Helped Create  
A Gold Medal System!**



# TABLE OF CONTENTS



## 2023 FALL PLAY BOOK

<b>A WORD FROM BREC</b> Letter from the Superintendent . . . . .	2
<b>CALENDAR OF EVENTS</b> This Month at BREC . . . . .	3
<b>VOLUNTEER BREC</b> . . . . .	6
<b>ADAPTIVE RECREATION</b> . . . . .	7
<b>ADULT LEISURE</b> Arts & Culture + Health & Wellness . . . . .	8
<b>ADVENTURE + SPORTS</b> Athletic Clinics & Sports + Equestrian + Extreme Sports + Outdoor + Pickleball + Tennis + Adult & Youth Leagues . . . . .	10
<b>AQUATICS</b> . . . . .	20
<b>ARTS + CULTURE</b> Adult & Youth Art Programs + Theatre & Dance . . . . .	20
<b>HEALTH + WELLNESS</b> . . . . .	25
<b>HOLIDAY EVENTS + CAMPS</b> . . . . .	26
<b>LEISURE + ENRICHMENT.</b> . . . . .	32
<b>SCIENCE + NATURE</b> Bluebonnet Swamp Nature Center + Conservation + Highland Road Park Observatory + Baton Rouge Zoo . . . . .	35
<b>FACILITY + RENTAL INFO</b> . . . . .	40

## BREC IS COMMITTED TO A CULTURE OF INCLUSION!

We provide recreational programs that are accessible and equitable to our community. We strongly encourage integration, as this inclusive recreation environment provides our patrons with even greater options for their leisure time. Therefore, anyone needing special accommodations to enjoy one of our programs is offered to participate in a recreational assessment conducted by a trained professional here at BREC. This assessment must be completed a minimum of two weeks prior to the program start date. This service is provided at no cost to the patron, as staff will make every attempt to facilitate inclusion of our patrons with needs into our diverse array of recreational opportunities and experiences we offer. If you would like to schedule a recreational assessment, please email [recadaptive@brec.org](mailto:recadaptive@brec.org).

20,000 copies of BREC's 2023 Fall Play Book Rouge were printed and distributed with the authority of the Recreation and Park Commission for the Parish of East Baton Rouge at a cost of \$0.63 per copy.

# A WORD FROM BREC



FOLLOW US ON SOCIAL MEDIA!   

BREC offices can be reached from 8 a.m.-5 p.m., Monday through Friday at 225-272-9200.

## BREC COMMISSION

**KENNETH POINTER, CHAIRMAN**

**SANDRA DAVIS, VICE-CHAIR**

**DWAYNE ROGERS, TREASURER**

**ROSSIE WASHINGTON, JR.**

**COLLIS TEMPLE, JR.**

**DONNA COLLINS LEWIS**

**JASON HUGHES**

**TRINA HALL**

**NATHAN RUST**

## BREC EXECUTIVE STAFF

**COREY K. WILSON, BREC SUPERINTENDENT**

**REED RICHARD, ASSISTANT SUPERINTENDENT OF SYSTEM PLANNING**

**BRANDON SMITH, ASSISTANT SUPERINTENDENT OF RECREATION PROGRAMS + FACILITIES**

**ANDREA ROBERTS, CHIEF OPERATING OFFICER**

**ANEATRA BOYKIN, CHIEF LEGAL OFFICER**

**TRACY FOUNTAIN, CHIEF FINANCIAL OFFICER**

## LETTER FROM SUPERINTENDENT COREY WILSON



Dear BREC Families,

After all of the planning and preparations, it seems like the summer season comes and goes far too quickly. Our team is grateful to all who helped make memories through trusting us with your children at one of BREC's many award-winning camps, swimming at Liberty Lagoon Water Park or

playing in one of our 175 parks. Now our attention is focused on making the Fall of 2023 one to remember!

Our team is putting the final touches on fall programs including one of our most popular events; the Pool Pawty at Liberty Lagoon Water Park which marks the end of the swimming season. Once again, Liberty Lagoon will offer sessions for both large and small dogs to enjoy the water with their owners. After that event, the water park will transition to weekend hours with surf and slides available for use during the warm September weekends.

BREC will bring back its popular after school programs, holiday camps and programs for children too young for school at the Bluebonnet Swamp Nature Center, Baton Rouge Zoo and select recreation centers. And of course, the holiday season will be filled with fun events to enjoy with your family and friends. You will find all of your long-time favorites along with newer events such as Fall Moon Fete, a Halloween Movie Fest, Let it Sneaux, sensory events for children with special needs and much more.

And of course, fall is synonymous with football and other sports. Be sure to register your team, or find one looking for new members, for all fall sports in our popular athletics leagues. You can also learn new skills with clinics

especially geared towards those interested in learning how to play pickleball, tennis and other sports.

As you look through this book, you'll see something new. Some listings will include an icon that has a hand with a heart on it, letting you know that there is an opportunity for you to participate as a volunteer. We know many students need service hours and community-minded people are looking for ways to donate their time to making East Baton Rouge Parish a better place to live, work and play. Becoming a BREC volunteer is an easy way to do that and if you volunteer more than 30 hours in a calendar year, you'll qualify for a \$500 credit on your state income tax.

We are diligently working toward completion of many large-scale construction projects including the first phase of the reimagining of the Zoo and Greenwood Community Park and were excited to unveil the new pygmy hippo exhibit at the Zoo, the renovated J.S. Clark Golf Course and soon, the new giraffe exhibit which will include a feeding platform! The entire project is on track to be completed in spring of 2024 with a new Zoo entryway in the park, and we can't wait to celebrate it with you. We are also in the process of creating a new Imagine Your Parks master plan to guide the next ten years of progress in our park system. If you haven't done so, please give us your thoughts on what you'd like to see in your parks by visiting [brec.org](http://brec.org).

We hope you use this PlayBook as a guide for you, your family, and friends to make this fall one to remember in your park system.

Corey K. Wilson, BREC Superintendent

# CALENDAR OF EVENTS



THIS MONTH AT BREC...

## AUGUST



- 9 VIBIN' YOGA**  
PAGE 25
- 12 SATURDAYS IN THE PARK**  
PAGE 8
- 12 SUP DAWG**  
PAGE 10
- 12 SUMMER SLAM**  
PAGE 10
- 12 PERSEID METEOR SHOWER**  
PAGE 35
- 18 SUNSHINE SOCIALS: TEAM SPIRIT TAILGATE**  
PAGE 7
- 18 SENIOR DAY @ LIBERTY LAGOON**  
PAGE 20
- 19 WONDERS OF WILDLIFE**  
PAGE 35
- 23 VIBIN' YOGA**  
PAGE 25
- 26 10 + UNDER TENNIS TOURNAMENT**  
PAGE 10
- 26 INVASIVE SPECIES WORKSHOP**  
PAGE 35



## SEPTEMBER

- 9 SATURDAYS IN THE PARK**  
PAGE 8 + 32
- 15 SUNSHINE SOCIALS: 50'S SOCK-HOP**  
PAGE 7
- 15 FAMILY GAME NIGHT**  
PAGE 32
- 16 COMMUNITY MINI BREC-ATHLON**  
PAGE 10
- 16 END OF SUMMER DOG POOL PAWTY**  
PAGE 20
- 16 ADULT GAME NIGHT**  
PAGE 32
- 17 END OF SUMMER DOG POOL PAWTY**  
PAGE 20
- 18 GLOW IN THE PARK: VOLLEYBALL**  
PAGE 32
- 20 NBA NON-STOPPERS**  
PAGE 10
- 23 FOOD TRUCK FRENZY**  
PAGE 32
- 29 BREW AT THE ZOO**  
PAGE 32
- 29 MOVIE IN THE PARK**  
PAGE 33
- 30 5V5 FLAG FOOTBALL COMPETITION**  
PAGE 10
- 30 ROLLER JAM**  
PAGE 11



# OCTOBER



- 4 SWEET TOOTH DESIGNS**  
PAGE 33
- 7 RIDE + ROLL**  
PAGE 11
- 7 BOOVIE IN THE PARK**  
PAGE 26
- 12 GLOW IN THE PARK: KICKBALL**  
PAGE 32
- 13 SWAMP HAUNTED HIKES**  
PAGE 26
- 13 FRIDAY FRIGHT NIGHT**  
PAGE 26
- 13 LET'S GEAX TIE DYE**  
PAGE 33
- 14 SATURDAYS IN THE PARK**  
PAGE 8 + 32
- 14 PARTIAL SOLAR ECLIPSE**  
PAGE 35
- 14 GEAX FISH! CATFISH RODEO**  
PAGE 36
- 14 GREAT FAMILY CAMPOUT** Oct. 14 + 15  
PAGE 11
- 16 MAGNOLIA MOUND CREOLE MOURNING CUSTOMS** Oct. 16-Nov. 6  
PAGE 26
- 17 NBA NON-STOPPERS**  
PAGE 10
- 20 SUNSHINE SOCIALS: MAGICAL MOMENTS**  
PAGE 7
- 20 SWAMP HAUNTED HIKES**  
PAGE 26

- 20 TRICK + TREAT: ART UNLEASHED**  
PAGE 27
- 20 FAMILY GAME NIGHT**  
PAGE 32
- 21 STUDENT HORSE SHOW: WESTERN**  
PAGE 11
- 21 3 ON 3 BASKETBALL TOURNAMENT**  
PAGE 11
- 21 BOO AT THE ZOO**  
PAGE 27
- 22 STUDENT HORSE SHOW: ENGLISH**  
PAGE 11
- 22 BOO AT THE ZOO**  
PAGE 27
- 26 PUMPKIN PADDLE PARADE**  
PAGE 27
- 27 THE ADDAMS FAMILY** Oct. 27 + 28  
PAGE 20
- 27 SWAMP HAUNTED HIKES**  
PAGE 26
- 28 BOO AT THE ZOO**  
PAGE 27
- 28 HOOPER HALLOWEEN TRAIL RUN**  
PAGE 27
- 28 FULL MOON FETE**  
PAGE 27
- 28 THE SPOOKY SPECTRUM**  
PAGE 36
- 29 BOO AT THE ZOO**  
PAGE 27



# NOVEMBER

- 1 **SWEET TOOTH DESIGNS** PAGE 33
- 1 **SWAMP ART SPECTACULAR:  
A CALL FOR ARTISTS** Nov. 1-Dec. 28  
PAGE 21
- 3 **CRAFT CORNER AT THE SWAMP** Nov. 3 + 4  
PAGE 20
- 4 **CONSERVATION VOLUNTEER PROJECT**  
PAGE 36
- 10 **THE EDGE OF NIGHT** PAGE 36
- 11 **SATURDAYS IN THE PARK** PAGE 8 + 32
- 11 **VETERAN'S DAY AT THE ZOO**  
PAGE 27
- 11 **ART FOR ANIMALS FESTIVAL**  
PAGE 36
- 11 **SWAMP ART SHOW FIELD DAYS** Nov. 11 + 12  
PAGE 21
- 15 **GLOW IN THE PARK: 9 SQUARE**  
PAGE 32
- 15 **SWEET TOOTH DESIGNS** PAGE 33
- 16 **GLOW IN THE PARK: VOLLEYBALL**  
PAGE 32
- 17 **SUNSHINE SOCIALS: S'MORE FUN**  
PAGE 7
- 17 **FAMILY GAME NIGHT** PAGE 32
- 18 **HOOPER HUSTLE** PAGE 11
- 18 **ZOO RUN** PAGE 36
- 18 **FAMILY FUN FEST** PAGE 33
- 21 **NBA NON-STOPPERS** PAGE 10
- 24 **ZOOLIGHTS** Nov. 24-Dec. 30  
PAGE 27



# DECEMBER

- 1 **OPEN HOUSE JUNIOR SINGLES  
ROUND ROBIN TOURNAMENT**  
PAGE 11
- 1 **REINDEER RIDE**  
PAGE 28
- 2 **GINGERBREAD HOUSE MAKING**  
PAGE 28
- 2 **BREC GREEN FORCE VOLUNTEER TRAINING**  
PAGE 36
- 6 **RECYCLED GINGERBREAD VILLAGES**  
PAGE 28
- 9 **SENSORY SANTA**  
PAGE 7
- 9 **3 ON 3 BASKETBALL TOURNAMENT**  
PAGE 11
- 9 **GINGERBREAD HOUSE MAKING**  
PAGE 28
- 9 **LET IT SNEAX**  
PAGE 28
- 9 **SATURDAYS IN THE PARK**  
PAGE 32
- 10 **MAGNOLIA MOUND CREOLE CHRISTMAS +  
HOLIDAY FAIR**  
PAGE 28
- 13 **GEMINID METEOR SHOWER**  
PAGE 37
- 15 **SUNSHINE SOCIALS: ELF YOURSELF**  
PAGE 7
- 16 **REINDOG RUN**  
PAGE 28
- 19 **GINGERBREAD HOUSE MAKING**  
PAGE 28
- 19 **NBA NON-STOPPERS**  
PAGE 10
- 22 **RECYCLED GINGERBREAD VILLAGES**  
PAGE 28
- 29 **2024 PREVIEW PARTY @ HRPO**  
PAGE 37






# BE GOOD DO GOOD

Looking for a way to give back to the community with your school, church, office, or other group? Check out our **VOLUNTEER OPPORTUNITIES** and sign up today.

BREC needs volunteers to fulfill our mission of providing park and recreational opportunities for all residents of East Baton Rouge Parish. With a range of facilities and programs, BREC has a volunteer opportunity for everyone.

**BENEFITS:** Volunteers who contribute 30 or more hours in a calendar year and complete mandatory BREC volunteer training are eligible for a \$500 Louisiana state tax deduction and a chance to win various prizes.

**SCREENING PROCESS:** In keeping with our intent to provide the best possible services, we undergo a thorough volunteer process. As a result, we require volunteers to fill out an opportunity form and consent to a background check.

**VOLUNTEER OPPORTUNITIES:** Be on the lookout for this icon  throughout the PlayBook for events that you can volunteer at!

Join the  
**#BREC VOLUNTEERS!**

SCAN HERE



# VOLUNTEER

WITH BREC

Follow Us: Facebook @VolunteerBREC  
Contact Us:  volunteer@brec.org



# ADAPTIVE RECREATION

 [BREC.ORG/ADAPTIVE](https://brec.org/adaptive)

Opportunities listed below are free for all ages unless otherwise noted. An additional 20% fee will be applied to all paid programming for out-of-parish participants. This does not apply to admission into facilities.

Our goal is to offer a positive and supportive environment where individuals of all abilities can explore new recreation skills, develop socialization skills and have opportunities to participate in leisure and recreation programming to the fullest extent. While BREC strives to offer inclusive programs parish-wide we also offer separate programs exclusively for people with intellectual and developmental disabilities.

More info:  [casey.cantrelle@brec.org](mailto:casey.cantrelle@brec.org)

To register:  [brec.org/adaptiveregistration](https://brec.org/adaptiveregistration)

All BREC programs are inclusive. If you would like to participate in a BREC program and might require an accommodation, please contact [molly.orr@brec.org](mailto:molly.orr@brec.org) for more information or set up an assessment.

## EVENTS

### SUNSHINE SOCIALS

Dance the night away with BREC Adaptive and Families Helping Families as we host our monthly Sunshine Socials for adults and teens with intellectual and developmental disabilities and their friends and family. Be creative and dress to match each month's theme. Enjoy dinner, dancing, and door prizes.

MILTON J. WOMACK PARK BALLROOM

Aug. 18: **Team Spirit Tailgate**

Sept. 15: **50's Sock-Hop**

Oct. 20: **Magical Moments**


Nov. 17: **S'more Fun (Camping)**

Dec. 15: **Elf Yourself**

6-9 p.m. / \$5 per person

Ages: 16+ with intellectual and developmental disabilities and their families

More info:  [recadaptive@brec.org](mailto:recadaptive@brec.org)

To register:  [brec.org/adaptiveregistration](https://brec.org/adaptiveregistration)

### SENSORY SANTA

In partnership with Families Helping Families, the BREC Adaptive team invites you to come right down Santa Clause Lane and take a picture with Santa! Children and adults with sensory processing disorders have an opportunity to enjoy activities and have one on one time to take a picture with Santa, without the hassle of standing in line.

NORTH SHERWOOD FOREST COMMUNITY PARK

Dec. 9 / 9 a.m.-noon

More info:  [recadaptive@brec.org](mailto:recadaptive@brec.org)

## PROGRAMS

### SUNSHINE CLUB

Sunshine Club is here to help bridge the gap for adults with Intellectual and Developmental Disabilities by offering not only recreational experiences, but life skills and volunteer opportunities. We learn how to be productive members of the community while exploring and learning new things with fun thrown in the mix.

MILTON J. WOMACK PARK

Monday-Friday / Aug. 14-Dec. 15 / 8 a.m.-3:30 p.m.

Ages: 18+ with intellectual + developmental disabilities

\$125 per week

More info:  [recadaptive@brec.org](mailto:recadaptive@brec.org)

To register:  [webtrac.brec.org](https://webtrac.brec.org)

### SUNSHINE INTERACTIVE


Are you looking for an opportunity to have fun and gather with friends during the day? Do you like trying new activities as well as revisiting those we all love? Come have fun with the Sunshine Interactive Group for teens and adults with intellectual and developmental disabilities and their caregiver.

NORTH SHERWOOD FOREST COMMUNITY PARK

Monday-Friday / Aug. 14-Dec. 15 / 10 a.m.-noon

Teens + adults with intellectual + developmental disabilities

More info:  [recadaptive@brec.org](mailto:recadaptive@brec.org)

To register:  [brec.org/adaptiveregistration](https://brec.org/adaptiveregistration)

### SATURDAYS IN THE PARK

Join us on Saturday mornings, at Lovett Road Park, as we enjoy all that the parks have to offer with a pop-up sensory activity on these special Saturday's each month.

LOVETT ROAD PARK

Aug. 12 + Sept. 9 + Oct. 14 + Nov. 11 / 10 a.m.-noon

More info:  [recadaptive@brec.org](mailto:recadaptive@brec.org)



 Indicates Volunteer Opportunity

## INCLUSIVE LEAGUES

### INCLUSIVE KICKBALL

Next Kicker Up! Show your kicking skills and round the bases with BREC Adaptive's Inclusive Kickball. Open to everyone of all abilities ages 3 through adults.

#### FOREST COMMUNITY PARK

Tuesday / Aug. 22-Oct. 24 / 6-7 p.m. / Ages: 3+  
\$10/person

More info:  [recadaptive@brec.org](mailto:recadaptive@brec.org)

To register:  [webtrac.brec.org](http://webtrac.brec.org)

### INCLUSIVE BASKETBALL

Nothing but net! Show off your shooting and dribbling skills with BREC Adaptive's Inclusive Basketball. Open to all ages and abilities. Groups will be divided by age after registration closes.

#### LOVETT ROAD PARK

Sept. 16-Nov. 18 / 9 a.m.-noon / Ages: 3+  
\$10/person

More info:  [recadaptive@brec.org](mailto:recadaptive@brec.org)


To register:  [webtrac.brec.org](http://webtrac.brec.org)

# ADULT LEISURE

 [BREC.ORG/ADULTLEISURE](http://BREC.ORG/ADULTLEISURE)

Opportunities listed below are free for ages 55+ unless otherwise noted. An additional 20% fee will be applied to all paid programming for out-of-parish participants. This does not apply to admission into facilities.

The BREC Adult Leisure genre includes recreation facilities, events and programs across East Baton Rouge Parish offering a variety of recreational opportunities for adults ages 55 and up. These opportunities vary and can include arts and crafts, health and wellness and seasonal pop-up events.

More info:  [pturner@brec.org](mailto:pturner@brec.org)

## EVENTS

### SATURDAYS IN THE PARK

It's not just another ordinary day in the park. During Saturdays in the Park, there will be extra excitement to add to your day of play! Roll out of bed and into your local park for pop-up activities to entertain, engage, and inspire all ages.

#### WEBB PARK

Aug. 12 + Sept. 9 + Oct. 14 + Nov. 11 / 10 a.m.-noon

## PROGRAMS

### ARTS + CULTURE

#### CLASSIC CERAMICS OPEN STUDIO

Ceramics is a hobby that anyone can learn and find a passion for! During this studio time, seasoned participants provide insight on the techniques involved in the painting and glazing of ceramics. The focus of this class is not the forming of the ceramic piece but administering the paint and glaze to preformed ceramic pieces. Participants bring their own supplies: paint/brushes/pieces or you can purchase a piece from our selection.

#### SHARP ROAD PARK

Tuesday + Thursday / 9-11 a.m.

#### LOYAL TO THE SOIL

Do you have a green thumb? Are you interested in learning more about gardening? Either way, the Loyal to the Soil Gardening program is for you! This program extends the opportunity to contribute your time and expertise to grow nutritious foods, socialize with others and pass on cross-generational knowledge to younger community members.

#### ALSEN PARK

Monday + Thursday / 10-11 a.m.

#### ANNA T. JORDAN COMMUNITY PARK

Monday + Wednesday / 9:30-11 a.m.

#### PAINTING WITH A PURPOSE

Are you interested in learning to paint? Our Painting with Purpose class provides participants the opportunity to experience and explore a variety of painting techniques and mediums. The instructor will guide class in painting projects and allow them to explore their creativity by creating unique pieces of art. Participants will receive a supply list to select, purchase and bring in their own supplies.

#### WEBB PARK ADULT LEISURE CENTER

Tuesday / 10-11:30 a.m.



 Indicates Volunteer Opportunity



### **SHARP AS A NEEDLE**

Do you have a sewing machine, patterns or fabric laying around? Are you interested in developing a new skill and learning how to sew? No matter what skill level you are starting from, Sharp as a Needle Sewing Class is for you! Our instructor will familiarize participants with the sewing machine: parts, function and how to operate. Different patterns and materials will be presented, discussed, and utilized to make individual projects.

ALSEN PARK

Tuesday / 10-11 a.m.

WEBB PARK ADULT LEISURE CENTER

Monday + Thursday / 10-11:30 a.m.

### **WARMTH OF THE EARTH POTTERY**

Use your hands to get creative while shaping and molding clay into beautiful pieces of artwork. Basic pottery techniques are introduced where participants will be allowed to create, paint, and glaze their individual pieces. The finished product will then be fired by the instructor.

SHARP ROAD PARK

Monday + Wednesday + Friday / 9:30-11 a.m.

## **HEALTH + WELLNESS**

### **BUSY BODIES**

Busy bodies is an instructor-led Senior exercise program which incorporates using chairs, weights, strength bands and balancing bars. This program addresses some of the major wellness components needed for optimal health such as strength, flexibility, balance, cognition, and nutrition.

INDEPENDENCE COMMUNITY PARK

Monday + Wednesday + Friday / 8:30-9:30 a.m.

### **COMMIT TO BE FIT**

Participants will be taught a sequence of choreographed dance steps while moving in lines or rows, facing the same direction and executing the same steps at the same time. This is a wonderful way to workout and get your heart rate up while perfecting your dance moves too!

ALSEN PARK

Wednesday / 10-11 a.m.

NORTH SHERWOOD FOREST COMMUNITY PARK

Monday-Friday / 9:30-10:30 a.m.

### **GOLDEN HOURS DANCE**

We've brought our weekly dances to Jackson! Grab those dancing shoes for our weekly Golden Hours Dances, with live entertainment, refreshments and plenty of dancing, along with the opportunity to meet new friends and catch up with familiar faces around the community.

JACKSON COMMUNITY PARK

Thursday / 1-3 p.m. / \$5 per person

### **STEPS IN MOTION**

Join in the lively group of Steps in Motion and learn easy-to-follow steps to music that will make you smile. What's a better way to get moving than dancing and exercising at the same time!

NORTH SHERWOOD FOREST COMMUNITY PARK

Monday-Friday / 10:30-11:30 a.m.

### **TABLE TENNIS**

Table tennis is a wonderful way to simulate mental alertness, concentration, and tactical strategy making it the perfect game for seniors! Table tennis also develops mental acuity, improves reflexes, is easy on the joints, burns calories, offers a social outlet, improve balance, and stimulates various parts of the brain. Plus, it's downright fun!

INDEPENDENCE COMMUNITY PARK

Monday + Thursday / noon-3 p.m.

Wednesday / 10 a.m.-noon

### **TEA DANCE**

Grab those dancing shoes for our weekly Tea Dances! Each week we offer live entertainment, refreshments, and plenty of dancing along with the opportunity to meet new friends and catch up with familiar faces in the community.

MILTON J. WOMACK PARK BALLROOM

Tuesday / 1-3 p.m.

### **WALKING WITH JOY**

Grab a friend or meet some new ones while we walk with joy! This is more than just an exercise program, it is a positive and healthy start to your day and reach fitness goals by walking while we visit and converse in a safe, group setting.

ALSEN PARK

Monday / June 5-Dec. 29 / 10-11:30 a.m.

### **YOGA**

You're never too old to reap the rewards of yoga. For seniors who are looking for a safe, effective way to enhance their physical health and overall wellness, the stretching, breathing, and meditation practices of yoga can be a great solution.

INDEPENDENCE COMMUNITY PARK

Thursday / 8-9 a.m.

NORTH SHERWOOD FOREST COMMUNITY PARK

Monday + Thursday / 10-11 a.m.



# ADVENTURE + SPORTS

 [BREC.ORG/ADVENTUREANDSPORTS](http://BREC.ORG/ADVENTUREANDSPORTS)

Opportunities listed below are free for all ages unless otherwise noted. An additional 20% fee will be applied to all paid programming for out-of-parish participants. This does not apply to admission into facilities.

## EVENTS

### SUP DAWG

Have you ever wanted to try something new with your four-legged friend? Sign up for a one-hour session for you and your pup to take one of our stand-up paddleboards out on the lake. We will provide all equipment needed to paddle. We will even provide a dog wash station before you leave!

#### GREENWOOD COMMUNITY PARK

Aug. 12 / 9-10 a.m. + 10-11 a.m. + 11-noon

(One-hour sessions)

Ages: 12+ / \$15

More info:  [outdooradventure@brec.org](mailto:outdooradventure@brec.org)


To register:  [webtrac.brec.org](http://webtrac.brec.org)

### SUMMER SLAM

Roll into Summer Slam with us and enjoy a day-long celebration of the end of summer at the Skatepark! Come join us for music, food, fun, and extremely good riding. Beginning at noon, the park will get blasted with non-stop music as well as food vendors! Starting at 3pm, we will have a skatepark contest involving our Skaters, Bikers, and Scooters with fantastic prizes for top finishers!

#### EXTREME SPORTS PARK AT PERKINS ROAD COMMUNITY PARK

Aug. 12 / 3-7 p.m. / Ages: 5+

More info:  [xsports@brec.org](mailto:xsports@brec.org)

### 10 + UNDER TENNIS TOURNAMENT

This tournament features a singles round robin format with boys and girls divisions: ages 8 and younger on a 36 ft. court with a maximum 23-inch racquet; ages 10 and younger on a 60 ft. court with a maximum 25-inch racquet; ages 10 and younger on a 78 ft. court with a maximum 29-inch racquet. Free snacks and awards for players.

#### HIGHLAND ROAD COMMUNITY PARK TENNIS CENTER

Aug. 26 / 8:30 a.m.-noon / Ages: 6-10 / \$18

To register:  [webtrac.brec.org](http://webtrac.brec.org)  225-766-0247

Registration deadline: Aug. 23

### COMMUNITY MINI BREC-ATHLON

In partnership with BREC's Outdoor Adventure team, this event was created to bring individuals from the local and surrounding communities together to experience the joy and excitement of physical activity and friendly competition. The BREC-Athlon will consist of a 3 mile run and fun kayaking portion. Families are invited, but participants must be 16 and older. Onsite registration will begin at 7 a.m. The race begins at 8 a.m. Participants may bring their own kayaks and are required to wear life jackets.

#### MILFORD WAMPOLD MEMORIAL PARK

Sept. 16 / 8-11 a.m. / Ages: 16+

More info:  [recreationevents@brec.org](mailto:recreationevents@brec.org)

To register:  [brec.org/brecathlon](http://brec.org/brecathlon)

Registration: June 1-Aug. 25

### NBA NON-STOPPERS

NBA (Neighborhood Basketball Association) The mighty Non-Stoppers consists of players from the community. The Non-Stopper's motto is that they never want to take a break. This program teaches them man-to-man defense, teamwork, and other fundamentals like dribbling, passing, and shooting. Register in-person or online.

GUS YOUNG AVENUE PARK - Sept. 20


ANNA T. JORDAN COMMUNITY PARK - Oct. 17

LONGFELLOW PARK - Nov. 21

MONTE SANO PARK - Dec. 19

5:30-8 p.m. / Ages: 16+ / \$5/person

More info:  [vselvage@brec.org](mailto:vselvage@brec.org)  225-775-1707

To register:  [webtrac.brec.org](http://webtrac.brec.org)  On-Site


### 5V5 FLAG FOOTBALL COMPETITION

Come test your flag football skills against other players in your community. This one-day competition will have teams competing to see who come out on top. The teams will consist of 5 players and follow the NFL Flag Football style of play. Register in-person at Maplewood or online.

#### MAPLEWOOD DRIVE PARK

Sept. 30 / 10 a.m.-3 p.m. / Ages: 16+ / \$5/person

More info:  [britiany.sensley@brec.org](mailto:britiany.sensley@brec.org)

 225-229-3966

To register:  [webtrac.brec.org](http://webtrac.brec.org)



 Indicates Volunteer Opportunity

## ROLLER JAM 🖐️

Celebrate Roller Skating month with us at the Skatepark. Come join us for music, fun, and some old fashion roller skating. We will have skating demonstrations from various skaters as well as instruction on how to get involved in this ever-growing sport!

### EXTREME SPORTS PARK AT PERKINS ROAD COMMUNITY PARK

Sept. 30 / 2-5 p.m. / Ages: 5+  
More info: 📧 [xsports@brec.org](mailto:xsports@brec.org)

## RIDE + ROLL 🖐️

Come on out and celebrate the anniversary of the opening of the Extreme Sports Park with a little bit of friendly competition. We will be hosting a BMX Skate Park Contest, BMX Dirt Jump Contest, and a Skateboarding Contest here in the park. This is a free event so bring your bikes and boards and get ready to roll!

### EXTREME SPORTS PARK AT PERKINS ROAD COMMUNITY PARK

Oct. 7 / 2-6 p.m. / Ages: 5+  
More info: 📧 [xsports@brec.org](mailto:xsports@brec.org)

## GREAT FAMILY CAMPOUT 🖐️

Grab a tent and enjoy an evening being active with other families, make a s'more, sleep under the stars, and wake up refreshed in a beautiful BREC park! Archery, biking, hiking, inflatables, and more Outdoor Adventure fun will run from 4 p.m. to dark. Food is provided and no camping experience required.

### FLANACHER PARK

Oct. 14 + 15 / 3 p.m.-10 a.m.  
Rain-out date: Nov. 11 + 12  
\$15/person / \$5-15/tent rental / \$2/sleeping bag rental  
More info: 📧 [outdooradventure@brec.org](mailto:outdooradventure@brec.org)  
To register: 🌐 [webtrac.brec.org](http://webtrac.brec.org)

## STUDENT HORSE SHOW

Come watch our lesson students enjoy a day at a horse show, demonstrating all they've learned, and gaining experience in the show ring in a welcoming and encouraging environment. Open to the public for viewing, this is a great opportunity to let your future young rider see what our park has to offer!

### FARR PARK EQUESTRIAN CENTER

**Western Horse Show:** Oct. 21  
**English Horse Show:** Oct. 22  
9 a.m.-2 p.m.

More info: 📞 225-769-7805  
📧 [camille.chapman@brec.org](mailto:camille.chapman@brec.org)

## 3 ON 3 BASKETBALL TOURNAMENT 🖐️

Are you ready to unite 6 (3 on 3) players on the court? Less players means more ball time, easier defense and more chances to show your skills on the court. Who's taking home the trophy in the end?

### NORTH STREET PARK + KERNAN AVENUE PARK

Oct. 21 + Dec. 9 / 10 a.m.-1 p.m. / Ages: 16+  
\$10/person  
More info: 📧 [jeremy.isaac@brec.org](mailto:jeremy.isaac@brec.org)  
To register: 🌐 [webtrac.brec.org](http://webtrac.brec.org)

## HOOPER HUSTLE 🖐️

Get ready to test your mountain bike skills at the Hooper Hustle! This classic mountain bike race has two categories for Novice and Advanced riders. Registration is \$35 and prizes will be awarded! Hang around after the race for some food, music, and drinks. Register by October 20 to get a race t-shirt.

### HOOPER ROAD PARK

Nov. 18 / 9 a.m.-1 p.m. / Ages: 16+ / \$35  
More info: 📧 [outdooradventure@brec.org](mailto:outdooradventure@brec.org)  
To register: 🌐 [webtrac.brec.org](http://webtrac.brec.org)

## OPEN HOUSE JUNIOR SINGLES ROUND ROBIN TOURNAMENT

This is a great opportunity for beginner youth players to experience playing in a tournament. Format is 10-point sets. Free pizza, snacks, and beverages for players.

### CAPITAL ONE TENNIS CENTER AT CITY-BROOKS COMMUNITY PARK

Dec. 1 / 4-8 p.m. / Ages: 11-18 / \$20  
To register: 🌐 [webtrac.brec.org](http://webtrac.brec.org) 📞 225-343-3767  
Registration deadline: Nov. 29

# PROGRAMS + CLINICS

## ATHLETICS CLINICS + SPORTS

### BADMINTON

Quick! Name the fastest racket sport in the world. Nope, it's badminton! Faster than tennis, squash, jai lai and others by as much as 100 mph! You may remember playing in your backyard or at picnics, but now you can play every week at Highland Road Community Park. You will get a fabulous workout, and all ages and skill levels are welcome.

### HIGHLAND ROAD COMMUNITY PARK

Tuesday + Friday / Begins Aug. 1 / 3:30-7:30 p.m.  
Ages: 10+ / \$5/month or \$50/year  
To register: 📍 On-Site

### VOLLEY UP ACADEMY

The Volley Up Academy educates athletes on the proper techniques to help them excel in the sport during Middle and High School. Participants will be strengthening their body, learning drills, bonding with teammates, coaches and improving volleyball technique through thrilling and modern volleyball exercises. Volley Up will help with molding your passion and developing respect, trust, and discipline.

### HIGHLAND ROAD COMMUNITY PARK

Wednesday / Aug. 9-Oct. 25 / 5:30-7:30 p.m.  
Ages: 11+ / \$10/session  
To register: 🌐 [webtrac.brec.org](http://webtrac.brec.org)



## BEACH VOLLEY

Join us as we play rounds of fun in the sand. Participants will be inspired to experience volleyball outside the gym during the cool fall evenings during the season. This was created by getting back to fun and energetic game of beach volleyball. Let's have fun with new people in your community.

JEFFERSON HIGHWAY PARK + PERKINS ROAD  
COMMUNITY PARK + KATHY DRIVE PARK  
Tuesday / Sept. 5 + 12 + 19 / 5-7 p.m. / Ages: 12+

More info: [brec@breconthegeaux.com](mailto:brec@breconthegeaux.com)

To register: [brec.org/beachvolley](https://brec.org/beachvolley)

## VOLLEY UP

Participants will be inspired to learn the fundamentals of volleyball in a creative way with other experienced players. This program is designed to encourage others to get back into the fun and energetic game of volleyball. Let's volley up and have fun!

ANNA T. JORDAN COMMUNITY PARK  
Thursday / Sept. 7-Dec. 28 / 6-8 p.m.

HIGHLAND ROAD COMMUNITY PARK  
Monday / Sept. 11-Dec. 18 / 4:30-7:30 p.m.

BEN BURGE PARK  
Wednesday / Sept. 13-Dec. 20 / 4:30-7:30 p.m.

ANTIOCH BOULEVARD PARK  
Thursday / Sept. 7-Dec. 21 / 6-8 p.m.  
Ages: 16+

## EQUESTRIAN

### ENGLISH + WESTERN RIDING LESSONS

Learn how to ride a horse or improve your skills. Farr Park offers riding lessons from beginner to advanced to students ages 6 and older at all different levels, English or Western, taught by qualified instructors who specialize in their disciplines. Group and private lessons are available.

FARR PARK EQUESTRIAN CENTER  
Tuesday-Friday, year round  
Lesson Times: 4 p.m. + 5:30 p.m. / Ages: 6+

Group lessons (no more than 5 riders): \$30

Private lessons: \$50

More info: [225-769-7805](tel:225-769-7805)

[camille.chapman@brec.org](mailto:camille.chapman@brec.org)



## HEARTS + HOOVES THERAPEUTIC

### RIDING PROGRAM

Riders aged 6 and up with physical, mental, and social disabilities participate in a six-week session of riding lessons tailored to their needs. Riders enjoy a one-hour class on horseback learning stretching exercises, basic equitation, and games. Horseback riding is known to improve core strength and coordination and provide a unique social opportunity with peers. Maximum class sizes of 8 riders, with 2 instructors and up to 3 volunteer assistants per rider.

FARR PARK EQUESTRIAN CENTER  
Session 1: Monday / Sept. 11-Oct. 16

Session 2: Monday / Oct. 30-Dec. 4

Available class times: 4:30 p.m. + 6 p.m. / Ages: 6+  
\$130

Pre-registration + Assessment required

Scholarships are available

To register: [camille.chapman@brec.org](mailto:camille.chapman@brec.org)

To volunteer: [volunteer.brec.org](https://volunteer.brec.org)

More info: [225-769-7805](tel:225-769-7805)

[camille.chapman@brec.org](mailto:camille.chapman@brec.org)

### GUIDED TRAIL RIDES

BREC's Farr Park Equestrian center is proud to offer guided trail rides on select Saturdays and Sundays. Enjoy a one-hour gentle ride through the park or in the indoor arena on one of the BREC horses. This fun activity is perfect for families, groups, and friends. Trail rides are by appointment only.

FARR PARK EQUESTRIAN CENTER  
Sept. 16 + Oct. 7 + Nov. 5 + Nov. 18 + Dec. 9

Ride times: 9 a.m. + 10:30 a.m. + noon

Ages: 9+ / \$50/rider

Maximum 8 riders per ride time

More info: [225-769-7805](tel:225-769-7805)

[camille.chapman@brec.org](mailto:camille.chapman@brec.org)

## EXTREME SPORTS

### SKATEBOARDING ACADEMY

Do you want to learn to skateboard? Then join us for Skateboarding Academy, over four weeks our staff will teach the fundamentals of skateboarding, from balance, board control, transition riding, ollies and more. This class meets consecutively over a four-week period so you have time each week to practice the lessons from each class and grow your skills. This class is open to skaters at any skill level. Our instructors meet the skater where they're at and will be there to guide riders with both general coaching to meet them based on their personal abilities. BREC will provide all equipment necessary.

EXTREME SPORTS PARK AT  
PERKINS ROAD COMMUNITY PARK  
Sept. 6-27 / Wednesday / 5-6 p.m. / Ages: 8+ / \$50  
More info: [xsports@brec.org](mailto:xsports@brec.org) [225-766-9039](tel:225-766-9039)

To register: [webtrac.brec.org](https://webtrac.brec.org)

## BMX AT THE PARK

BMX at the Park is an entry level, beginner skatepark BMX skills clinic specifically for riding the skatepark. Over four weeks our staff will teach the fundamentals of riding BMX. During the clinic one of our experienced instructors will guide riders on the essentials skills of riding the park such as etiquette, riding transition, and bunny hops. This clinic is open to riders at any skill level. Our instructors meet the rider where they're at and will be there to guide riders with both general and specific issues they may be having. This clinic is limited to 10 riders to ensure quality instruction, sign up now while spots are still available! BREC will provide all equipment necessary.

### EXTREME SPORTS PARK AT

#### PERKINS ROAD COMMUNITY PARK

Sept. 7-28 / Thursday / 5-6 p.m. / Ages: 8+ / \$50

More info: [✉ xsports@brec.org](mailto:xsports@brec.org) [☎ 225-766-9039](tel:225-766-9039)

To register: [🌐 webtrac.brec.org](https://webtrac.brec.org)

## SKATEBOARDING BASICS

Skateboarding Basics is a basic skateboarding skills clinic for entry level skaters. During this clinic an experienced instructor will guide skaters on the essentials of riding your board at the park. This involves skills such as etiquette, turning, riding transition, and much more. This clinic is open to skaters at any skill level. Our instructors meet the skater where they're at and will be there to guide riders with both general coaching to meet then based on their personal abilities. BREC will provide all equipment necessary.

### EXTREME SPORTS PARK AT

#### PERKINS ROAD COMMUNITY PARK

Oct. 18 + 25 / 5-6 p.m. / Ages: 8+ / \$20

More info: [✉ xsports@brec.org](mailto:xsports@brec.org) [☎ 225-766-9039](tel:225-766-9039)

To register: [🌐 webtrac.brec.org](https://webtrac.brec.org)

## BALANCE BIKING 101

"Balance Biking 101" is a unique program geared towards accelerating a toddler's bicycle handling skills and progression curve. It offers a safe environment for kids 2-5 to learn how to ride the BMX track with experienced instructors by their sides. Over two week our instructors will guide students through certain smaller areas of the BMX track and teach bike control as well as track etiquette! This class is formatted to give your child a head start in bicycle riding and designed to give them a sense of accomplishment at an early age. This clinic is limited to 10 riders to ensure quality instruction, sign up now while spots are still available! BREC will provide all equipment necessary.

### EXTREME SPORTS PARK AT

#### PERKINS ROAD COMMUNITY PARK

Oct. 19 + 26 / 5-6 p.m. / Ages: 2-5 / \$20

More info: [✉ xsports@brec.org](mailto:xsports@brec.org) [☎ 225-766-9039](tel:225-766-9039)

To register: [🌐 webtrac.brec.org](https://webtrac.brec.org)



## OUTDOOR

### SUNSET PADDLE

Join us as we paddle into the beautiful south Louisiana sunset. Enjoy the fading warm colors as we explore this time at sunset. This experience is perfect for youth and adults with little or abundant watercraft skills. Kayaks and canoes are available to rent, but these spots go quick so make sure to register in advance before the event is full.

### MILFORD WAMPOLD MEMORIAL PARK

Aug. 10 + 24 + Sept. 7 / 6:30-8 p.m. / Ages: 12+

\$10 single kayak / \$20 tandem kayak

More info: [✉ outdooradventure@brec.org](mailto:outdooradventure@brec.org)

To register: [🌐 webtrac.brec.org](https://webtrac.brec.org)

### KAYAKING 101

A beginner to intermediate paddling class on local BREC ponds. You will be given the opportunity to explore paddling skills on dry land, before moving on to water to get a true feel for how kayaks handle in their natural environment. Instructors will coach participants on basic kayak handling, strokes, and techniques, and maneuvering skills to help you feel comfortable on the water in the kayak. This prepares you for the other BREC Paddling Programs.

### GREENWOOD COMMUNITY PARK

Aug. 15 / 6-7 p.m. / Ages: 12+ / \$15

More info: [✉ outdooradventure@brec.org](mailto:outdooradventure@brec.org)

To register: [🌐 webtrac.brec.org](https://webtrac.brec.org)

### KAYAKS + COFFEE

Looking for something more than your average cup of Joe to kickstart your morning routine? Try adding a little spice with Kayaks & Coffee, a fantastic blend of adventure and exercise to get you ready to face the day.

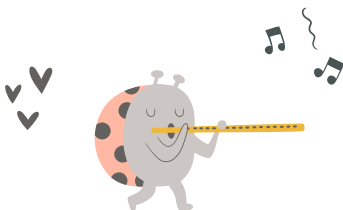
### MILFORD WAMPOLD MEMORIAL PARK

Aug. 22 + Sept. 12 + Oct. 3 / 10 a.m.-noon

Ages: 18+ / \$10

More info: [✉ outdooradventure@brec.org](mailto:outdooradventure@brec.org)

To register: [🌐 webtrac.brec.org](https://webtrac.brec.org)



## ARCHERY 101

Want to explore archery? Then join us for this one-day introduction class to the skills of archery. Come enjoy the fun that comes with shooting a bow and arrow and let us help you get on target! BREC will provide all equipment necessary.

MILTON J. WOMACK PARK

Aug. 23 / 6-7:30 p.m. / Ages: 16+ / \$15

More info: [outdooradventure@brec.org](mailto:outdooradventure@brec.org)

To register: [webtrac.brec.org](http://webtrac.brec.org)

## ARCHERY 101 JR.

Want to explore archery? Then join us for this one-day introduction class to the skills of archery. Come enjoy the fun that comes with shooting a bow and arrow and let us help you get on target! This class is for youth from ages 8-15. BREC will provide all equipment necessary.

MILTON J. WOMACK PARK

Aug. 30 / 6-7:30 p.m. / Ages: 8-15 / \$15

More info: [outdooradventure@brec.org](mailto:outdooradventure@brec.org)

To register: [webtrac.brec.org](http://webtrac.brec.org)

## ARCHERY ACADEMY

Archery Academy is designed to take you from archery newbie to bullseye bound in four short weeks. Our instructors will provide you with basic archery instruction, educate participants on common archery equipment, and safe archery practices. You will spend lots of time shooting with plenty of opportunity to practice your newfound archery skills. We meet once a week for four weeks to review and practice skills, ending in an explosive conclusion! Both youth and adults are welcome. All equipment is provided.

MILTON J. WOMACK PARK

Sept. 6-27 / Wednesday / \$40

6-7 p.m. / Ages: 8-15

7-8 p.m. / Ages: 16+

More info: [outdooradventure@brec.org](mailto:outdooradventure@brec.org)

To register: [webtrac.brec.org](http://webtrac.brec.org)

## SUP 101

SUP bruh? We're stoked to be offering this SUP 101 course at Greenwood Community Park. So come hang with us as we take our stand-up paddle boards out on the lake. Let us help you get comfortable standing and paddling on the open water. All SUP equipment provided.

GREENWOOD COMMUNITY PARK

Sept. 26 / 6-7 p.m. / Ages: 12+ / \$15

More info: [outdooradventure@brec.org](mailto:outdooradventure@brec.org)

To register: [webtrac.brec.org](http://webtrac.brec.org)

## PICKLEBALL

### INTERMEDIATE + ADVANCED PICKLEBALL

This is an open play competition opportunity for intermediate and advanced pickleball players. Walk-ins accepted.

GREENWOOD COMMUNITY PARK TENNIS CENTER

Aug. 1-Dec. 14 (no session Nov. 23)

Tuesday + Thursday / 5-9 p.m. / Ages: 18+ / \$2

### SENIOR BEGINNER PICKLEBALL INSTRUCTION

This is an on-going program for senior beginners who want to learn the game of pickleball. Walk-ins accepted.

GREENWOOD COMMUNITY PARK TENNIS CENTER

Aug. 2-Dec. 13 / Wednesday / 8-10 a.m.

Ages: 50+ / \$2

### PICKLEBALL OPEN PLAY

Open play for all levels.

GREENWOOD COMMUNITY PARK TENNIS CENTER

Aug. 2-Dec. 13 (no session Sept. 4)

Monday + Wednesday / 8 a.m.-noon

Ages: 18+ / \$2

### ADVANCED PICKLEBALL DRILLS

This is an on-going program for adult advanced pickleball players who want to improve their game. Walk-ins accepted.

GREENWOOD COMMUNITY PARK TENNIS CENTER

Aug. 2-Dec. 13 / Wednesday / 5-7 p.m.

Ages: 18+ / \$2

### FREE FRIDAYS PICKLEBALL/TENNIS PLAY

Free play for all levels.

GREENWOOD COMMUNITY PARK TENNIS CENTER

Aug. 4-Dec. 29 (no sessions Nov. 24 + Dec. 22)

Friday / 8 a.m.-noon / Ages: 18+

### BEGINNER PICKLEBALL INSTRUCTION

This is an on-going program for adult beginners who want to learn the game of pickleball. Walk-ins accepted.

GREENWOOD COMMUNITY PARK TENNIS CENTER

Aug. 7-Dec. 18 (no session Sept. 4)

Monday / 5-7 p.m. / Ages: 18+ / \$2





# TENNIS

## ADULT PROGRAMS

### TUESDAY NIGHT TENNIS

This on-going program is for players who are more consistent and can handle a faster pace. Focused drills as well as advanced technique and strategies. Walk-ins accepted.

CAPITAL ONE TENNIS CENTER AT  
CITY-BROOKS COMMUNITY PARK

Aug. 1-Dec. 19 / Tuesday / 6:30-8 p.m.  
Ages: 18+ / \$12

### SUNDAY MORNING TENNIS

This on-going program is for players who are more consistent and can handle a faster pace. Focused drills as well as advanced technique and strategies. Walk-ins accepted.

CAPITAL ONE TENNIS CENTER AT  
CITY-BROOKS COMMUNITY PARK

Aug. 6-Dec. 17 / Sunday / 8:30-10 a.m.  
Ages: 18+ / \$12

### GENEXIS LEAGUE PREP FOR ADULT BEGINNERS

This four-week program is for adult beginner players who want to improve their tennis skills in preparation to play league tennis. Monthly and weekly rates are offered.

CAPITAL ONE TENNIS CENTER AT  
CITY-BROOKS COMMUNITY PARK

Aug. 7-28 + Sept. 11-Oct. 2 + Oct. 9-30 + Nov. 6-27 +  
Dec. 4-18 (three weeks)  
Monday / 7:30-8:30 p.m. / Ages: 18+  
For weekly + monthly rates: [brec.org/tennis](https://brec.org/tennis)  
To register: [webtrac.brec.org](https://webtrac.brec.org) ☎ 225-343-3767  
Registration deadline: Saturday before session begins

### BEGINNER ADULT INSTRUCTION

This four-week program for beginners introduces and reinforces fundamental tennis techniques. Walk-ins accepted.

HIGHLAND ROAD COMMUNITY PARK TENNIS CENTER  
Sept. 6-27 + Oct. 4-25 + Nov. 1-22 + Nov. 29-Dec. 20

Wednesday / 6-7 p.m. / Ages: 18+ / \$40/session  
To register: [webtrac.brec.org](https://webtrac.brec.org) ☎ 225-766-0247

### SHOW UP + PLAY: BEGINNER + INTERMEDIATE ADULT ROUND ROBIN

Just pay court fees. No registration required.

HIGHLAND ROAD COMMUNITY PARK TENNIS CENTER  
Sept. 6-27 + Oct. 4-25 + Nov. 1-22 + Nov. 29-Dec. 20

Wednesday / 7-8:30 p.m. / Ages: 18+  
Cost of court fees

### LADIES SINGLES TENNIS DRILLS

This four-week program focuses on improving strategy and movement for singles tennis play. Skill levels 2.5-3.5.

HIGHLAND ROAD COMMUNITY PARK TENNIS CENTER  
Sept. 11-Oct. 2 + Oct. 9-30 + Nov. 6-Dec. 11

(no sessions Nov. 20 + 27)  
Monday / 10:30-11:30 a.m. / Ages: 18+  
\$70/month or \$20/week

To register: [webtrac.brec.org](https://webtrac.brec.org) ☎ 225-766-0247  
Registration deadline: Sunday before session begins

### BEGINNER ADULT INSTRUCTION

This four-week program for beginners introduces and reinforces fundamental tennis techniques. Walk-ins accepted.

HIGHLAND ROAD COMMUNITY PARK TENNIS CENTER  
Sept. 11-Oct. 2 + Oct. 9-30 + Nov. 6-27 +

Dec. 4-18 (three weeks)  
Monday / 6-7 p.m. / Ages: 18+

Sept.-Nov.: \$40/month  
Dec.: \$30

To register: [webtrac.brec.org](https://webtrac.brec.org) ☎ 225-766-0247

### STROKES, STRATEGY + PLAY FOR ADULT INTERMEDIATES

This four-week program reinforces stroke development, conditioning, and strategies for adult intermediate players. Walk-ins accepted.

HIGHLAND ROAD COMMUNITY PARK TENNIS CENTER  
Sept. 11-Oct. 2 + Oct. 9-30 + Nov. 6-27 +

Dec. 4-18 (three weeks)  
Monday / 7-8 p.m. / Ages: 18+

Sept.-Nov.: \$40/month  
Dec.: \$30

To register: [webtrac.brec.org](https://webtrac.brec.org) ☎ 225-766-0247

### LADIES OPEN TENNIS DRILLS

This four-week program includes drills, cardio tennis, and point situations. Skill levels 2.5 - 4.0.

HIGHLAND ROAD COMMUNITY PARK TENNIS CENTER  
Sept. 12-Oct. 3 + Oct. 10-31 + Nov. 7-Dec. 12

(no sessions Nov. 21 + 28)  
Tuesday / 10:30 a.m.-noon / Ages: 18+  
\$80/month or \$25/week

To register: [webtrac.brec.org](https://webtrac.brec.org) ☎ 225-766-0247  
Registration deadline: Sunday before session begins

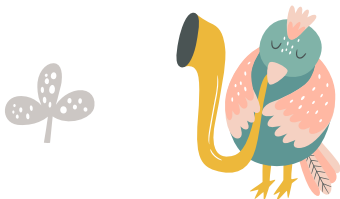
### LADIES BEGINNERS TENNIS

This four-week program introduces the game of tennis to adult women beginners.

HIGHLAND ROAD COMMUNITY PARK TENNIS CENTER  
Sept. 13-Oct. 4 + Oct. 11-Nov. 1 + Nov. 8-Dec. 13

(no sessions Nov. 22 + 29)  
Wednesday / 10-11 a.m. / Ages: 18+ / \$80/month

To register: [webtrac.brec.org](https://webtrac.brec.org) ☎ 225-766-0247  
Registration deadline: Monday before session begins





### LADIES FUN TENNIS LEAGUE 2.0

This four-week program introduces the game of tennis to beginners. Fun league play includes singles and doubles. Limited to 16 players.

HIGHLAND ROAD COMMUNITY PARK TENNIS CENTER

Sept. 14-Oct. 5 + Oct. 12-Nov. 2 +

Nov. 9-Dec. 14 (no sessions Nov. 23 + 30)

Thursday / 10:30 a.m.-noon / Ages: 18+

\$70/month

To register: [webtrac.brec.org](https://webtrac.brec.org) ☎ 225-766-0247

Registration deadline: Monday before session begins

### INTERMEDIATE ADULT TENNIS CLINIC

Four-week program for adults who want to fine tune their game.

INDEPENDENCE COMMUNITY PARK TENNIS CENTER

Aug. 7-28 + Sept. 11-Oct. 2 + Oct. 9-30 + Nov. 6-27

Monday / 6-7:30 p.m. / Ages: 18+ / \$50/month

To register: [webtrac.brec.org](https://webtrac.brec.org) ☎ 225-923-2792

Registration deadline: Friday before session begins

### BEGINNER ADULT TENNIS CLINIC

Four-week program for adults who want to learn the game of tennis.

INDEPENDENCE COMMUNITY PARK TENNIS CENTER

Aug. 9-30 + Sept. 6-27 + Oct. 4-25 + Nov. 1-22

Wednesday / 6-7:30 p.m. / Ages: 18+ / \$50/month

To register: [webtrac.brec.org](https://webtrac.brec.org) ☎ 225-923-2792

Registration deadline: Friday before session begins

### YOUTH PROGRAMS

#### OPEN HOUSE SERIES FOR JUNIORS

Kids come out and learn to play tennis. BREC provides equipment and racquets. Please bring a water bottle and dress to sweat.

CAPITAL ONE TENNIS CENTER AT

CITY-BROOKS COMMUNITY PARK

Aug. 5-Dec. 16 (no session Aug. 26)

Saturday / \$2/class

8:30-9:30 a.m. / Ages: 6-10

9:30-10:30 a.m. / Ages: 11-16

#### HOME-SCHOOL TENNIS PROGRAM

A six-week program designed especially for home-schooled children. Program includes drills, games, and tennis knowledge.

CAPITAL ONE TENNIS CENTER AT

CITY-BROOKS COMMUNITY PARK

Aug. 23-Sept. 27 + Oct. 18-Nov. 22

Wednesday / 1-2:30 p.m. / Ages: 5-17 / \$70/session

To register: [webtrac.brec.org](https://webtrac.brec.org) ☎ 225-343-3767

Registration deadline: Sunday before session begins

#### PEE WEE CHAMPS

This four-week program is designed to help your child develop motor skills, hand-eye coordination, overall athleticism, and fundamental tennis strokes. Fun is guaranteed!

CAPITAL ONE TENNIS CENTER AT

CITY-BROOKS COMMUNITY PARK

Oct. 6-27 / Friday / 3:45-4:30 p.m. / Ages: 3-6 / \$55

To register: [webtrac.brec.org](https://webtrac.brec.org) ☎ 225-343-3767

Registration deadline: Oct. 1

## HIGHLAND PARK JUNIOR TENNIS ACADEMY

This is a continuous year-round program. Beginner level (red ball) is only offered monthly. Skill levels for beginner, intermediate, and advanced (orange/green dot/yellow balls) are separated into semesters. 10% discount off semester rate if registered by Aug. 2. August and December are two-week sessions.

HIGHLAND ROAD COMMUNITY PARK TENNIS CENTER  
Aug. 21-Dec. 14

**Minnows:** Beginner skill level participants (red ball). Only monthly rates offered.

Ages: 5-8 / Monday + Wednesday / 4:30-5:30 p.m.

**Guppies:** Beginner and intermediate skill level participants (orange and green dot balls) must have taken Minnows or have Academy Director approval. Ages: 8+ / Monday-Thursday / 4:30-6 p.m.

**Sharks:** Intermediate and advanced skill level participants (yellow ball). Participants ages 9-11 must have taken Guppies or have Academy Director approval.

Ages: 9-17 / Monday-Thursday / 5:30-7 p.m.

For monthly + semester rates: 🌐 [brec.org/tennis](http://brec.org/tennis)

More info + to register: 📞 225-766-0247 📍 On-Site

Registration deadline: 24 hours prior to class. Same day walk-ins will not be accepted.

## JUNIOR BEGINNER INSTRUCTION

This four-week program for beginners introduces and reinforces fundamental tennis techniques. Walk-ins accepted.

HIGHLAND ROAD COMMUNITY PARK TENNIS CENTER  
Sept. 5-26 + Oct. 3-24 + Nov. 7-28 + Dec. 5-19 (3 wks)  
Tuesday / 5-6 p.m. / Ages: 8+

Sept.-Nov.: \$40/month

Dec.: \$30

To register: 🌐 [webtrac.brec.org](http://webtrac.brec.org) 📞 225-766-0247

## JUNIOR ADVANCED BEGINNER INSTRUCTION

This four-week program reinforces fundamental tennis techniques, stroke development, and conditioning for advanced beginners. Walk-ins accepted.

HIGHLAND ROAD COMMUNITY PARK TENNIS CENTER  
Sept. 6-27 + Oct. 4-25 + Nov. 1-22 + Nov. 29-Dec. 20  
Wednesday / 5-6 p.m. / Ages: 8+ / \$40/session

To register: 🌐 [webtrac.brec.org](http://webtrac.brec.org) 📞 225-766-0247

## PEE WEE PROGRAM

This four-week program consists of 45-minute classes designed to introduce the game of tennis to younger children. Help your child develop motor skills, hand-eye coordination, overall athleticism, and fundamental tennis strokes. Fun is guaranteed!

HIGHLAND ROAD COMMUNITY PARK TENNIS CENTER  
Sept. 9-30 + Oct. 7-Nov. 4 (no sessions Oct. 28)  
Saturday / 9:15-10 a.m. or 10:15-11 a.m. / Ages: 3-5  
\$40/session

To register: 🌐 [webtrac.brec.org](http://webtrac.brec.org) 📞 225-766-0247

Registration deadline: Thursday before session begins  
No drop-ins.

## HOME-SCHOOL TENNIS PROGRAM

This six-week program is designed especially for home-schooled children. Participants will learn about the game of tennis in a fun learning environment. Program includes drills, games, and tennis knowledge.

INDEPENDENCE COMMUNITY PARK TENNIS CENTER  
Aug. 31-Oct. 5 + Oct. 12-Nov. 16

Thursday / 1:30-3 p.m. / Ages: 6-17 / \$70/session

To register: 🌐 [webtrac.brec.org](http://webtrac.brec.org) 📞 225-923-2792

Registration deadline: Friday before session begins

## PEE WEE TENNIS PROGRAM

This six-week program introduces the game of tennis to younger children. Help your child develop motor skills, hand-eye coordination, overall athleticism, and fundamental tennis strokes. Fun is guaranteed.

INDEPENDENCE COMMUNITY PARK TENNIS CENTER  
Aug. 31-Oct. 5 + Oct. 12-Nov. 16

Thursday / 1:30-2:15 p.m. / Ages: 3-6 / \$50/session

To register: 🌐 [webtrac.brec.org](http://webtrac.brec.org) 📞 225-923-2792

Registration deadline: Friday before session begins



# LEAGUES

## ADULT LEAGUES

No experience necessary.

To register: [webtrac.brec.org](https://webtrac.brec.org)

More info: [athletics@brec.org](mailto:athletics@brec.org)

### WEEKDAY ADULT WOMEN'S SOFTBALL

HARTLEY/VEY SPORTS PARK AT OAK VILLA

Wednesday / 6:30-10 p.m. / Ages: 18+

\$395 per team

Fall League: Sept. 20-Dec. 6

Fall Registration Period: Aug. 1-31

If games are cancelled due to weather, make up games will be played the following Monday for the Women's league.

### WEEKDAY ADULT MEN'S SOFTBALL

HARTLEY/VEY SPORTS PARK AT OAK VILLA

Monday + Wednesday / 6:30-10 p.m. / Ages: 18+

\$395 per team

Fall League: Sept. 18-Oct. 23

Fall Registration: Aug. 1-31

### SUNDAY ADULT COED SOFTBALL – RECREATIONAL LEAGUE

CENTRAL SPORTS COMPLEX

Sunday / 1-6 p.m. / Ages: 18+ / \$295 per team

Fall League: Sept. 17-Nov. 19

Fall Registration: Aug. 1-31

### WEEKDAY ADULT BASKETBALL

TEAM AUTOMOTIVE GROUP SPORTSPLEX

Monday + Wednesday / 8-10 p.m. / Ages: 18+

\$285 per team

Fall League: Oct. 11-Dec. 13

Fall Registration: Sept. 1-30

### SUNDAY ADULT 7V7 FLAG FOOTBALL

CENTRAL SPORTS COMPLEX

Sunday / 1-6 p.m. / Ages: 18+

\$395 per team

Fall League: Sept. 17-Nov. 19

Fall Registration: Aug. 1-31

### WEEKDAY ADULT 7V7 FLAG FOOTBALL

CENTRAL SPORTS COMPLEX

Wednesday / 7-10 p.m. / Ages: 18+

\$395 per team

Fall League: Sept. 20-Nov. 19

Fall Registration: Aug. 1-31



# ADULT TOURNAMENTS

## ADULT COED KICKBALL – RECREATIONAL TOURNAMENT

FOREST COMMUNITY PARK

Nov. 17-19 / Ages: 18+ / \$175 per team

Registration: Oct. 1–31

## ADULT COED VOLLEYBALL – RECREATIONAL TOURNAMENT

KATHY DRIVE PARK + FLANNERY ROAD PARK

Oct. 27-29 / Ages: 18+ / \$175 per team

Registration: Sept. 1-31

# YOUTH LEAGUES

## YOUTH BASKETBALL

### LESTER ROBERTS SPORTS ACADEMY COED

#### HOUSE LEAGUE BASKETBALL

SPORTS ACADEMY

Registration: Aug. 13-Sept. 3

Fundamental Day #1: Aug. 19 / 9 a.m.-noon

Fundamental Day #2: Aug. 26 / 9 a.m.-noon

Draft Day: Sept. 2 / 9 a.m.-noon

League Play: Sept. 9 / 9 a.m.-noon

Ages: 6-14 / \$75 per participant

### YOUTH BASKETBALL OF BATON ROUGE – WINTER LEAGUE

All Coaches a required to complete and submit a BREC Volunteer Coaches Background Check Form by September 1st of each year: [www.volunteer.brec.org](http://www.volunteer.brec.org). Teams/organizations with multiple teams and/or age groups are required to have more than one coach per team per age group.

Registration: Aug. 1-Dec. 15

### LEAGUES OFFERED

BREC Athletics has transition to a grade-based platform, so the grade a child is in for the start of the 2023-2024 year, will determine placement of youth within our leagues.

### Recreational Divisions

#### LITTLE BALLERS LEAGUE

PreK-K

ANNA T JORDAN COMMUNITY PARK

#### FRESHMAN LEAGUE

1st-2nd Grade

ANNA T JORDAN COMMUNITY PARK

#### SOPHOMORE LEAGUE

3rd-4th Grade

HOWELL PLACE GYM AT THE EXXONMOBIL YMCA

### Premier Divisions

#### JUNIOR LEAGUE

5th-6th Grade

SPORTS ACADEMY

#### SENIOR LEAGUE

7th-8th Grade

SPORTS ACADEMY

#### VARSITY

9th-10th Grade

MCKINLEY MIDDLE SCHOOL GYM



## YOUTH BASEBALL

### YOUTH BASEBALL OF BATON ROUGE (YBBR)

BREC Athletics offers a spring youth coach pitch & kid pitch season for youth ages 7-12. Our mission is to ensure that each participant registered for our program has a safe, fun, and enriching experience with baseball.

HARTLEY/VEY SPORTS PARK AT OAK VILLA

Wednesday / 6:40-9:40 p.m.

Spring/Summer League: March 6-May 29

\$135 per participant

Registration: Dec 1-31

#### Kid Pitch Division(s)

7U (Coach Pitch) – Any player who has not reached his or her 8th birthday on or before May 1, 2024, is eligible to play.

8U (Coach Pitch) – Any player who has not reached his or her 9th birthday on or before May 1, 2024, is eligible to play.

9U - Any player who has not reached his or her 10th birthday on or before May 1, 2024, is eligible to play.

10U - Any player who has not reached his or her 11th birthday on or before May 1, 2024, is eligible to play.

11U - Any player who has not reached his or her 12th birthday on or before May 1, 2024, is eligible to play.

12U - Any player who has not reached his or her 13th birthday on or before May 1, 2024, is eligible to play.



## YOUTH FOOTBALL

### YOUTH FLAG FOOTBALL OF BATON ROUGE – WINTER LEAGUE

BREC Flag Football was developed to create and maintain a positive, no- pressure atmosphere in a fun, safe, and supportive environment. Through great organization, communication and convenience for parents and kids, we aim to provide an exceptional sports experience that will have parents raving and players returning season after season.

#### CENTRAL SPORTS COMPLEX

Season: Oct. 10-Nov. 2

Tuesday + Thursday / 6:40-8:40 p.m.

Saturday / 9 a.m.-noon

\$125 per player

Registration: Sept. 1-30

#### LEAGUES OFFERED

BREC Athletics has transition to a grade-based platform, so the grade a child is in for the start of the 2023-2024 year, will determine placement of youth within our leagues.

#### Recreational Divisions

**FRESHMAN LEAGUE** Kindergarten-1st Grade

**SOPHOMORE LEAGUE** 2nd-3rd Grade

**JUNIOR LEAGUE** 4th-5th Grade

#### BREC YOUTH TACKLE FOOTBALL

In partnership with Louisiana Youth Sports Network Louisiana Youth Football (LYF) is a program formed to provide inner city youth with a positive alternative to the streets. LYF has started its' initiatives to improve the quality of life by enhancing the quality of the Junior Tackle Football program offered to the East Baton Rouge Parish & surrounding communities. Visit LouisianaYouthFootball.com for more information, registration process, and available teams and the For parents page for detailed registration information.

#### MEMORIAL SPORTS COMPLEX + OLYMPIA STADIUM

Saturday + Sunday / Ages: 7-13

Season: July-Dec.

More info: [louisianayouthfootball.com](https://louisianayouthfootball.com)

To register: [louisianayouthfootball.com/registry](https://louisianayouthfootball.com/registry)



# AQUATICS

 [BREC.ORG/AQUATICS](http://BREC.ORG/AQUATICS) + [LIBERTYLAGOON.COM](http://LIBERTYLAGOON.COM)

Opportunities listed below are free for all ages unless otherwise noted. An additional 20% fee will be applied to all paid programming for out-of-parish participants. This does not apply to admission into facilities.

## EVENTS

More info:  [libertylagoon.com/upcomingevents](http://libertylagoon.com/upcomingevents)

### SENIOR DAY

National Senior Citizens Day recognizes contributions senior citizens make in communities across the city of Baton Rouge. BREC would like to recognize them by rewarding them with private swim time.

### LIBERTY LAGOON

Aug. 18 / 3-6 p.m.

Registration opens April 10

Event limit: 50 participants



### END OF SUMMER DOG POOL PAWTY

Please join us for the End of Summer Pool Pawty at Liberty Lagoon. Please be advised that this is a dog-friendly event. Participants will encounter dogs in various conditions (i.e. wet, unleashed, etc.) For the safety of everyone and every dog, all participants must comply with the "Pool Pawty" rules that can be found at LibertyLagoon.com.

### LIBERTY LAGOON

Sept. 16

Session 1: 10:30 a.m.-12:30 p.m. (dogs under 40 pounds)

Session 2: 1-3 p.m. (dogs over 40 pounds)

Session 3: 3:30-5:30 p.m. (All dogs)

Sept. 17

Session 1: 10:30 a.m.-12:30 p.m. (All dogs)

Event limit 100 dogs per session.

# ARTS + CULTURE

 [BREC.ORG/ARTSANDCULTURE](http://BREC.ORG/ARTSANDCULTURE)

Opportunities listed below are free for all ages unless otherwise noted. An additional 20% fee will be applied to all paid programming for out-of-parish participants. This does not apply to admission into facilities.

## EVENTS

### THE ADDAMS FAMILY

Celebrate the wackiness in every family with our best-selling Broadway musical adapted for middle school-age performers! Wednesday Addams, the ultimate princess of darkness, has grown up and fallen in love with a sweet, smart young man from a respectable family whom her parents have never met. She confides in her father and begs him not to tell her mother. Now, Gomez Addams must do something he's never done before—keep a secret from his beloved wife, Morticia. Everything will change for the whole family on the fateful night they host a dinner for Wednesday's "normal" boyfriend and his parents.

INDEPENDENCE PARK THEATRE +  
CULTURAL CENTER

### Auditions

Sept. 9 - Vocal and Acting Auditions / 11 a.m.-3 p.m.

Sept. 10 - Dance Auditions / 11 a.m.-3 p.m.

Ages: 9-17

### Rehearsal

Sept. 18-Oct. 22 / Monday-Thursday / 5-8 p.m.

### Performances

Oct. 27 / 7 p.m. + Oct. 28 / 2 p.m. / Tickets: \$50

More info:  225-216-0660  [theatre@brec.org](mailto:theatre@brec.org)

 [theparktheatre.com](http://theparktheatre.com)



### CRAFT CORNER AT THE SWAMP

Looking to express yourself through some nature-themed crafts while enjoying the sights and sounds of the Swamp? Join us quarterly as we host Craft Corner and provide a variety of fun and interactive crafts for you to complete with us or take home to work on at your leisure. This program is included with your general admission.

### BLUEBONNET SWAMP NATURE CENTER

Nov. 3 + 4 / 9 a.m.-5 p.m.

General admission fees apply / Pass holders are free

More info:  225-757-8905  [sguidry@brec.org](mailto:sguidry@brec.org)

## SWAMP ART SHOW FIELD DAYS

Those interested in working on entry pieces for upcoming Swamp Art Show Series shows can visit the swamp on this day for inspiration (FOR FREE!). Whether your gear includes canvases or cameras, come out and enjoy this paint-out and field-shoot day. Bring your own supplies – we'll provide workspace indoors and out for you to create your masterpieces!

### BLUEBONNET SWAMP NATURE CENTER

Nov. 11 + 12 / Regular operating hours

More info: ☎ 225-757-8905

✉ swampevents@brec.org

## SWAMP ART SPECTACULAR:

### A CALL FOR ARTISTS

Calling all artists, your time to shine is now! We welcome all artists from every skill level, background, or age group to create your own interpretation of Louisiana nature through the medium of your choice – Fiber Arts, Fine Arts or Photography. Interested in entering your artwork? Please submit an Intent to Enter form starting on Nov. 1 at [brec.org/swampart](http://brec.org/swampart). Pieces will be displayed within the Visitors Exhibit Building from January 12 to February 25 of 2024. We ask patrons to come enjoy the artwork and vote for their favorites during the show! The exhibition features an opening reception to celebrate the launch of the show as well as a closing reception held on its last day to give visitors an opportunity to meet the participating artists. At the closing, all are welcome to enjoy some light refreshments and be with us as we announce the awards.

### BLUEBONNET SWAMP NATURE CENTER

Nov. 1-Dec. 28

More info: ☎ 225-757-8905

✉ swampevents@brec.org

To register: 🌐 [brec.org/swampart](http://brec.org/swampart)

## PROGRAMS

### FIRST FREE SUNDAYS

Free highlight tours will be offered on the first Sunday of each month. Special programs of traditional crafts, informative lectures, and family activities are planned for "First Free Sunday."

### MAGNOLIA MOUND

Aug. 6 + Sept. 3 + Oct. 1 + Nov. 5 + Dec. 3 / 1-4 p.m.

More info: 🌐 [magnoli mound@brec.org](mailto:magnoli mound@brec.org)

☎ 225-43-4955

### PRIVATE MUSIC LESSONS WITH KIDS' ORCHESTRA

Interested in learning a musical instrument? Kids' Orchestra in partnership with BREC can help! In each thirty-minute private lesson, students will have one-on-one instruction with a professional musician on their instrument, allowing students to advance at their own pace. Lessons are available on flute, clarinet, trumpet, trombone, tuba, percussion, violin, viola, cello, and double bass at the locations and days listed below. Lessons come in packages of 12 or 24 during the school year and 4 or 8 during the summer. Each lesson includes an instrument, a performance shirt, and performance opportunities. Financial assistance may be available through Kidz' Orchestra.

### ZACHARY COMMUNITY PARK

Monday + Wednesday

### BAKER PARK

Tuesday

### GUS YOUNG PARK

Thursday

Begins Sept. 1 / 4-8 p.m. / \$35 per lesson

To register: 🌐 [kidsorchestra.org/private-lessons/](http://kidsorchestra.org/private-lessons/)



## YOUTH ART PROGRAMS

### ART IMAGINATION

Find all the things that you love the most about art and let your imagination run wild. Participants will create arts and crafts projects while enjoying soft music to help get them in their creativity zone.

KERR WARREN PARK + MILLS AVENUE PARK + MONTE SANO PARK

Wednesday / Sept. 6-Dec. 20 / 5-6 p.m. / Ages: 6+

More Info: [vselvage@brec.org](mailto:vselvage@brec.org) 225-775-1707

To register: [webtrac.brec.org](http://webtrac.brec.org)

### SATURDAY MORNING STUDIO

This semester's Saturday Morning Studio will focus on Art With A Purpose! Each month, Studio participants will be introduced to a new artist or art medium that has a specific intent. We will approach projects based on famous artists, self-awareness and advocacy. Join us each month for thought provoking creative expression. All supplies and snacks included!

Sept. 9: **Basquiat Dinosaur** (oil pastels and paint)

In this session, we will encourage students to develop their own symbols and signature style. Using their own design ideas, they will create a dinosaur using unique icons in the style of American artist, Jean-Michel Basquiat. Basquiat (1960-1988) began as a street/graffiti artist in New York and became a major influence in the Neo-Expressionism movement. Neo-Expressionism features bold, rough strokes and bright colors that show emotion.

Oct. 14: **Shaking Dog** (mixed media, tempera and pastels)

What's more fun than a wet, shaking dog? A composition of one that includes splatter and finger painting, that's what! Students will draw and use several painting techniques in the style of American finger painter, Iris Scott, to create a sweet, wet puppy. Iris Scott is one of a few professional finger painters. By using paint and just her fingers she creates vibrant paintings full of movement and life!

Nov. 11: **Clay Flower Still Life** (clay and acrylic paint)

In this session, students will create a piece of art that features a three-dimensional flower still life inspired by the many flowers found in the art of Diego Rivera and Frida Kahlo. Hispanic artists, Rivera and Kahlo, overcame a lifetime of illnesses and hardships before they became two of the most noted artists in history. Kahlo is quoted as saying, "I paint flowers so they will not die."

Dec. 9: **The Day You Begin** (markers, crayons + Sharpie)

This month's Studio is perfect for making a memorable gift or keepsake. Students will create a self-portrait inspired by the artwork in the book *The Day You Begin* by Jacqueline Woodson and illustrated by Rafael López. They will also highlight the things that make them wonderfully unique, as they focus on expressive line, shape, pattern and proportion. *The Day You Begin* tells a story about celebrating the things that make you uniquely you. The colorful illustrations are paired with a positive message of how true magic can take place if you share your stories and experiences with others.

MILTON J. WOMACK PARK

10:30 a.m.-noon / Ages: 8-12 / \$12 per class

More info: [robin.mcandrew@brec.org](mailto:robin.mcandrew@brec.org)

225-281-9509

To register: [webtrac.brec.org](http://webtrac.brec.org)



### STUDIO 3, 4, 5

It's never too early to begin art! This class will introduce grown-ups and children to the very basics of art through books, games and a thoughtfully designed pre-school specific curriculum. This class will be taught by professional artist and illustrator, Holly Stone-Barker.

BARINGER ART CENTER

Session 1: Tuesday / Sept. 12 + 19 + 26 + Oct. 3

Session 2: Tuesday / Oct. 10 + 17 + 24 + 31

Ages: 3-5 / 9:30-10:30 a.m. / \$40

More info: [robin.mcandrew@brec.org](mailto:robin.mcandrew@brec.org)

225-281-9509

To register: [webtrac.brec.org](http://webtrac.brec.org)

### LITTLE PICASSOS

This class is an introduction to the fun aspects of art. Young artists will experience their first art basics by experimenting with paint, oil pastels, watercolor and mixed media. Each week's project will be based on an art centric book for children.

ZACHARY COMMUNITY PARK

Tuesday / Sept. 12 + 19 + 26 + Oct. 3

4:30-5:30 p.m. / Ages: 5-7 / \$30 per month

More info: [robin.mcandrew@brec.org](mailto:robin.mcandrew@brec.org)

225-281-9509

To register: [webtrac.brec.org](http://webtrac.brec.org)

### LOOSE ENDS II

Let BREC Art help with the mid-week slump! Twice a month, Baringer Art Center and Zachary Community Park will open their doors to the creative world of art! Art talk, artsy games, art films and visual art projects will be part of this on-going series. Classes will vary from week to week and will not repeat.

BARINGER ART CENTER

Wednesday / Sept. 20 + Oct. 4 + 18 + Nov. 1 + 15

4-5 p.m. / Ages: 8-12 / \$10 per visit per child

More info: [robin.mcandrew@brec.org](mailto:robin.mcandrew@brec.org)

225-281-9509

To register: [webtrac.brec.org](http://webtrac.brec.org)



## ADULT ART PROGRAMS

### ART UNWINED

Tired of the same ol' trace, paint and drink?! If so, then check out BREC's fun and creative grown-up time outs. This fall we are mixing it up with different classes and times so there is something for everyone! Each of the classes are designed to encourage and inspire while enjoying beverages and nibbles. Classes are taught by professional artist and illustrator, Holly Stone-Barker. All art supplies, nibbles and adult (or not) beverages included. Great for friend get-togethers, bridal parties, corporate team building or just making new friends! Private ART UnWINEd bookings are also available. Must be 21 to join the fun.

#### BARINGER ART CENTER

Sept. 13: **Planting Paper** (collage)  
Join us for an evening of "cutting up" and creating green masterpieces through the art of collage. Participants will design and print their own paper to cut and assemble into potted pieces of art! Wine and hors d'oeuvres will be served.

#### BARINGER ART CENTER

Oct. 26: **Signature Stamps** (carving + stamp making)  
In this Art UnWined, participants will sketch and then carve their own design into a stamp that can be used for print-making, painting, collage or to leave their mark wherever they would like! Wine and hors d'oeuvres will be served.

#### DRUSILLA LANE PARK

Nov. 3: **Playing with Mud** (clay)  
Join us for an evening of getting your hands dirty! Participants will work with ceramist, Sandy Dokka, to hand build and learn basic wheel throwing. Mud has never been this much fun! Wine, beer and hors d'oeuvres will be served. LIMIT OF 6

6:30-8:30 p.m. / Ages: 21+ / \$45

More info: [robin.mcandrew@brec.org](mailto:robin.mcandrew@brec.org)

☎ 225-281-9509

To register: [webtrac.brec.org](http://webtrac.brec.org)

### DRAWING + PAINTING

#### AN AFTERNOON AT THE GALLERY NEW!

BREC Art is collaborating with the Baton Rouge Gallery for an afternoon of sketching and painting. Participants will meet at Baton Rouge Gallery, tour the current exhibit which will be featuring artists: Rosemary Goodell, Sam Losavio, Leslie Elliottsmith, and David Horton. Participants will sketch one of the exhibit pieces, with or without assistance! We will all then adjourn and meet at Baringer Art Center to paint our sketch. All supplies included.

Sept. 21

BATON ROUGE GALLERY 1-2 p.m.

BARINGER ART CENTER 2:30-4 p.m.

Ages: 16+ / \$40

More info: [robin.mcandrew@brec.org](mailto:robin.mcandrew@brec.org)

☎ 225-281-9509

To register: [webtrac.brec.org](http://webtrac.brec.org)



### THE BIG SKETCH NEW!

The BIG Sketch wants you to join us each week for a sketch prompt. This free and easy program will have your creative juices flowing this fall. Sign up for FREE to receive a weekly sketch prompt each Monday morning. These prompts are designed for beginners, novices and professionals to challenge themselves through creativity. No more staring at a blank page or having artist's block! Join any time as past sketch prompts will be included in each email.

Sept. 4-Oct. 30 / Ages: 16+

Registration: Aug. 4-Oct. 30

More info: [robin.mcandrew@brec.org](mailto:robin.mcandrew@brec.org)

☎ 225-281-9509

### CERAMICS

#### MUDDY BUDDIES: A CLAY WHEEL THROWING CLASS FOR BEGINNERS

This class is for those who have always wanted to build, throw and play with clay! We will use the potter's wheel to learn how to make basic shapes used in all pottery: the cylinder and the bowl. With these two shapes we will create and design mugs and bowls limited only by your own imagination. This class will also explore trimming and how to glaze. You finish this fun class with your own mugs, bowls, and the experience of making art on a potter's wheel! Let's get muddy!

#### DRUSILLA LANE PARK

6-8 p.m.

Session I: Tuesdays / Oct. 3 + 10 + 17 + 24

Session II: Thursdays / Oct. 5 + 12 + 19 + 26

Session III: Tuesdays / Nov. 14 + 28 + Dec. 5 + 12

\$150 / Limit of 6 per session

More info: [robin.mcandrew@brec.org](mailto:robin.mcandrew@brec.org)

☎ 225-281-9509

To register: [webtrac.brec.org](http://webtrac.brec.org)

### OPEN CLAY STUDIO

BREC Art is proud to offer scheduled open wheel use for seasoned clay artists. No instructor is present. Open clay studio is for individuals who already know how to throw on a pottery wheel. Our new studio has everything you need to throw the perfect piece including tools and our new potter's wheels. Check website for Open Clay Studio dates.

#### DRUSILLA LANE PARK

Tuesday + Thursday / 5-8:30 p.m.

Saturday / 8:30 a.m.-noon / \$20 for 3.5 hour session

More info: [jpoulter@brec.org](mailto:jpoulter@brec.org) ☎ 225-228-2624

To register: [webtrac.brec.org](http://webtrac.brec.org)

For available dates + times: [brec.org/openstudio](http://brec.org/openstudio)



## MIXED MEDIA

**\$5 FODDER NEW!**(collage, book making and journaling)  
FODDER is in! Join Holly Stone-Barker, artist and illustrator, every other Friday for a lesson in paper making, collage, stamping, Zine making, junk journaling, repurposing, and paper piecing. Each lesson is a new surprise! Preferred journals are encouraged.

BARINGER ART CENTER

Friday / Sept. 8 + 22 + Oct. 6 + 20 + Nov. 3  
9:30-11 a.m. / Ages: 16+ / \$5

More info: [✉ robin.mcandrew@brec.org](mailto:robin.mcandrew@brec.org)

[☎ 225-281-9509](tel:225-281-9509)

To register: [🌐 webtrac.brec.org](https://webtrac.brec.org)

## ART ON MONDAYS

Join us at BREC's Baringer Art Center for our Art on Mondays. These two-hour workshops will highlight a different art process at each meeting. Designed for participants to learn skills that will enable them to continue their interests on their own. Workshops are designed for beginners, novices and professionals to learn and explore techniques. Each session will be taught by professional artist and illustrator, Holly Stone-Barker. All supplies included.

BARINGER ART CENTER

Sept. 11: **Ink Prints**

Sept. 25: **Collage**

Oct. 9: **Sketch**

Oct. 23: **Explore Color**

Nov. 6: **Painting**

9:30-11:30 a.m. / Ages: 18+ / \$30 per session

More info: [✉ robin.mcandrew@brec.org](mailto:robin.mcandrew@brec.org)

[☎ 225-281-9509](tel:225-281-9509)

To register: [🌐 webtrac.brec.org](https://webtrac.brec.org)

## OPEN STUDIO

Have a question? Need more space? Lack motivation? Then this FREE offering from BREC Art is for you! Bring your supplies and your art piece to our studio time and let professional artist, Holly Stone-Barker provide guidance, give useful and practical advice and inspire you to begin or finish a polished piece of art! Basic supplies including water cups, paper towels, a variety of used brushes, basic paint colors, color pencils and a basic palette of watercolors, will be available. REMEMBER: This is NOT a class! This is time for artists to gather, get advice, share work and meet like-minded friends. Participants can continue exploring what we learned on Monday "Art on Monday" class OR work on personal projects.

BARINGER ART CENTER

Sept. 15: **Ink Prints**

Sept. 29: **Collage**

Oct. 13: **Sketch**

Oct. 27: **Explore Color**

Nov. 10: **Painting**

9:30 a.m.-noon / Ages: 16+

More info: [✉ robin.mcandrew@brec.org](mailto:robin.mcandrew@brec.org)

[☎ 225-281-9509](tel:225-281-9509)

To register: [🌐 webtrac.brec.org](https://webtrac.brec.org)

## DANCE

### ART IN MOTION

Want to learn how to dance? This program will teach you the basics of the genres of jazz, tap, ballet and hip hop. It is open to all levels of dance skills. Bring your moves and come join us to get your groove on. A recital will be held at the end of the program to show off dance routines learned.

PERKINS ROAD COMMUNITY PARK

Tuesday / Sept. 5-Dec. 19

5:30-6:30 p.m. / Ages: 6-9

6:30-7:30 p.m. / Ages: 10-15

INDEPENDENCE COMMUNITY PARK

Tuesday / Sept. 5-Dec. 19

5-6 p.m. / Ages: 3-5

6-7 p.m. / Ages: 6-9

7-8 p.m. / Ages: 10-17

\$22/month

To register: [🌐 webtrac.brec.org](https://webtrac.brec.org)

### HIP HOP / MAJORETTES DANCE

Dance to the moon and reach for the stars. Majorettes Dance, also known as HBCU Dance includes 8 counts dance struts and jumps inspired by the clean and crisp technique of jazz and the energy and attitude of hip hop.

EXXON YMCA AT HOWELL PLACE GYM

Wednesday / Sept. 6-Dec. 20 / 6:30-8 p.m.

Ages: 6-16 / \$22/month

More info: [✉ vselvege@brec.org](mailto:vselvege@brec.org) [☎ 225-775-1707](tel:225-775-1707)

To register: [🌐 webtrac.brec.org](https://webtrac.brec.org)



# HEALTH + WELLNESS

 [BREC.ORG/HEALTHANDWELLNESS](https://brec.org/healthandwellness)

Opportunities listed below are free for all ages unless otherwise noted. An additional 20% fee will be applied to all paid programming for out-of-parish participants. This does not apply to admission into facilities.

## EVENTS

### VIBIN' YOGA


Vibin' Yoga may be the new start you are looking for. Vibin' Yoga combines traditional yoga techniques with the rhythms and flows of hip-hop music. This workout combines elements of yoga and trapeze arts, that creates a full-body workout with a healthy dose of fun.

CITY BROOKS COMMUNITY PARK - Aug. 9

PERKINS ROAD COMMUNITY PARK - Aug. 23

5:30-6:30 p.m. / Ages: 18+

More info:  [brecconthegeaux@brec.org](mailto:brecconthegeaux@brec.org)

To register:  [brec.org/vibinyoga](https://brec.org/vibinyoga)

## PROGRAMS

### FOREST TRAIL BLAZERS

Meet up with other trail walkers and joggers of all abilities before hitting the trails for fellowship and fitness. Sign in at the Recreation Center.

### FOREST COMMUNITY PARK

Tuesdays + Wednesdays + Thursdays

10 a.m.-2 p.m. / Ages: 18+

### LINE DANCING

Line Dancing is a beginner workout plan made to be fun and safe for anyone. We employ a variety of methods to get you moving including line dancing and aerobics.

### NORTH SHERWOOD FOREST COMMUNITY PARK

Tuesday + Thursday / 6-7 p.m. / Ages: 16+

\$36/month for two one-hour classes per week

To register:  [webtrac.brec.org](https://webtrac.brec.org)

### MARTIAL ARTS

Martial arts class teaches how to exercise the mind, body, and spirit through focused, purposeful movements. In addition to self-defense skills, participants learn self-discipline, self-confidence, and positive social behaviors.

### LONGFELLOW PARK

Tuesday + Wednesday / 6:30-7:30 p.m.

Ages: 6-18 (Beginner) / 16-18 (Intermediate)

\$22/month

To register:  [webtrac.brec.org](https://webtrac.brec.org)

### PILATES

Pilates combines low-impact flexibility and strength exercise with endurance movements. This class is for every ability and the instructor will provide examples for various levels.

### JACKSON COMMUNITY PARK

Thursday / 6:30-7:30 p.m. / Ages: 16+ / \$24/month

To register:  [webtrac.brec.org](https://webtrac.brec.org)

### CARDIO KICKBOXING

Want to increase your energy? Join us for an hour of mixed cardio and bodyweight workout while building confidence, changing the composition of the body and burning calories. Grab your water bottle and a friend and let's get moving.

### INDEPENDENCE COMMUNITY PARK

Tuesday / Sept. 5-Dec. 26 / 6-7 p.m. / Ages: 16+ / \$10/class

To register:  [webtrac.brec.org](https://webtrac.brec.org)

### CIRCUIT TRAINING

Are you ready to get into a healthier you? Circuit Training is a workout that involves rotating through various exercises targeting different parts of the body during the allotted time. These works improve heart health along with muscular endurance and increase strength with moves that challenge your whole body. Grab your water and a towel and join us for this full body workout.

### INDEPENDENCE COMMUNITY PARK

Monday / Sept. 4-Dec. 25 / 6-7 p.m. / Ages: 16+ / \$10/class

To register:  [webtrac.brec.org](https://webtrac.brec.org)

### TANG SOO DO

Interested in learning a form of karate? This class is a traditional Korean martial art and is a primarily system of empty-handed self-defense techniques. It is taught by an instructor with an extensive martial arts background.

### INDEPENDENCE COMMUNITY PARK

Monday + Wednesday / Sept. 4-Dec. 27 / Ages: 6+ / 5:30-6:30 p.m. (Beginner)

6:30-7:30 p.m. (Advanced)

\$25 per month (Beginner) / \$30 per month (Advanced)

To register:  [webtrac.brec.org](https://webtrac.brec.org)



## ZUMBA®

Come and join us for the Latin-inspired, calorie-burning and dance fitness party. Zumba fuses hypnotic Latin rhythms and easy to follow aerobic moves to create a one-of-a-kind fitness program that is energizing.

INDEPENDENCE COMMUNITY PARK

Wednesday / Sept. 6-Dec. 27 / 6:30-7:30 p.m.

Age: 16+ / \$10/ class

To register: [webtrac.brec.org](https://webtrac.brec.org)

## ZUMBA GOLD®

Come party into shape with us at Zumba Gold! This Latin-inspired, calories-burning, dance fitness class remains a popular go-to for fitness-minded folks around the world. While Zumba offers a total-body workout, it primarily targets the muscles of the legs and core from the motions of shuffling side to side and stepping back and forth throughout the dances.

INDEPENDENCE COMMUNITY PARK

Monday / Sept. 4-Dec. 25 / 11 a.m.-noon

Ages: 18+ / \$10/class

To register: [webtrac.brec.org](https://webtrac.brec.org)

# HOLIDAY EVENTS + CAMPS

[BREC.ORG/HOLIDAYCAMPS](https://BREC.ORG/HOLIDAYCAMPS)

Opportunities listed below are free for all ages unless otherwise noted. An additional 20% fee will be applied to all paid programming for out-of-parish participants. This does not apply to admission into facilities.

## EVENTS

### BOOVIE IN THE PARK 🖐️

Get your costumes ready! Come out and enjoy a day filled with family fun entertainment as BREC hosts a BOOvie in the Park. This is a SPOOKtacular event you don't want to miss with movies, music, characters, giveaways and much more for the family to enjoy. Check out [brec.org/boovie](https://brec.org/boovie) for the movie line up. All movies are PG unless otherwise stated.

INDEPENDENCE THEATRE LAWN

Oct. 7 / 11 a.m.-7 p.m.

More info: [recreationevents@brec.org](mailto:recreationevents@brec.org)

To register: [brec.org/boovie](https://brec.org/boovie)

### SWAMP HAUNTED HIKES 🖐️

Bluebonnet Swamp's Haunted Hikes are designed especially for younger children. This program is an alternative to the commercial haunted houses, which are geared more for teenagers and adults. Participants learn about snakes, insects, rats, and other "creepy critters" as they stop at educational stations along the trail. Track down costumed characters to receive "treasures" then trek through the Swamp Graveyard to our Education Building for Carnival Games and Spooky Storytime. No scare tactics are used during this program, and participants are welcome to come in costume if they choose. All participants should bring a flashlight, and because this program runs at night, all children must be accompanied by an adult. Join us at Haunted Hikes this year for tons of fun!

BLUEBONNET SWAMP NATURE CENTER

Friday / Oct. 13 + 20 + 27

Games + Entertainment start at 6 p.m.

Trails open at dark

\$6 per person / Ages 2 + under free

Advance tickets are available starting Oct. 1

For tickets: [webtrac.brec.org](https://webtrac.brec.org)

More info: [225-757-8905](tel:225-757-8905) [sguidry@brec.org](mailto:sguidry@brec.org)

### FRIDAY FRIGHT NIGHT 🖐️

A night of scary movies, on the big screen, in the middle of a park... it feels just right for Friday the 13th in October! Bring your blankets and chairs for a special outdoor screening of the old school and classic Halloween films, *Scream* (1996) and *Rocky Horror Picture Show*. In addition to the screenings, enjoy live music and cocktails before the start of *Scream*. And then be ready for the annual initiation and showing of *Rocky Horror*. Costumes are welcome. This is an adult-only event as alcohol will be present. Must show ID upon arrival.

FOREST COMMUNITY PARK

Oct. 13 / 5-10 p.m. / Ages: 18+

More info: [recreationevents@brec.org](mailto:recreationevents@brec.org)

To register: [brec.org/frightright](https://brec.org/frightright)

### MAGNOLIA MOUND CREOLE MOURNING CUSTOMS

Special tours will highlight the rituals and customs associated with death in early 19th-Century Louisiana. The historic house will be decorated as it was customary for funerals. This will be a non-scary educational experience that focuses on the difficulties of life in the 19th Century.

MAGNOLIA MOUND

Oct. 16-Nov. 6 / Operating hours

More info: [magnoliamount@brec.org](mailto:magnoliamount@brec.org)

[225-343-4955](tel:225-343-4955)





### TRICK + TREAT: ART UNLEASHED 🖐️

Your favorite dog Halloween costume contest is back! Bring your four-legged friends and families to a Friday night for some fang-tastic fun, free for all ages and breeds. Come enjoy local art and makers, dog adoptions, local pet vendors, food, art, kids' activities and more! If you'd like to participate in the event as an art vendor, pet vendor or want to register for our costume contest all forms can be found at [brec.org/artunleashed](http://brec.org/artunleashed).

FOREST COMMUNITY PARK

Oct. 20 / 5-8 p.m.

More info: 📧 [recreationevents@brec.org](mailto:recreationevents@brec.org)

To register: 🌐 [brec.org/artunleashed](http://brec.org/artunleashed)

### BOO AT THE ZOO 🖐️

The Zoo invites participants to Boo at the Zoo, a merry-not-scary trick-or-treating extravaganza. Participants should wear their best costumes and enjoy a day at the Zoo to celebrate fall in Louisiana. Each child in attendance (ages 12 and younger) will receive a pre-filled treat bag as they exit the Zoo.

BREC'S BATON ROUGE ZOO

Oct. 21 + 22 + 28 + 29

9:30 a.m.-4 p.m. / Grounds close at 5 p.m.

Adults: \$8.75 / Seniors: \$7.75

Ages: 2-12: \$5.75 / Ages 2 + younger: Free

### PUMPKIN PADDLE PARADE

Get into the Halloween spirit with our Pumpkin Paddle Parade, an exciting competition of "float" decorating! You design and decorate a kayak in Halloween décor, and then parade in front of our judges for the chance to win fabulous prizes! You can bring your own kayak free of charge, or you can rent one of ours for a small fee.

MILFORD WAMPOLD MEMORIAL PARK

Oct. 26 / 5:30-7 p.m. / Ages: 12+

\$10 single kayak / \$20 tandem kayak

More info: 📧 [outdooradventure@brec.org](mailto:outdooradventure@brec.org)

To register: 🌐 [webtrac.brec.org](http://webtrac.brec.org)

### HOOPER HALLOWEEN TRAIL RUN 🖐️

Happy Halloween racers! Join us out at the haunted Hooper Trails for a trail race that is simply spooky. Racers can choose to participate in the 1-mile Fun Run or the 4-mile competitor's loop. Prizes will be awarded to top finishers in the 4-mile Competitor's Loop. Register before October 6 to get a race shirt. Hang around after the race for food and a costume contest!

HOOPER ROAD PARK

Oct. 28 / 8 a.m.-1 p.m. / Ages: 8+ / \$35

Rain-out Date: Nov. 4

More info: 📧 [outdooradventure@brec.org](mailto:outdooradventure@brec.org)

To register: 🌐 [webtrac.brec.org](http://webtrac.brec.org)

### FULL MOON FETE 🖐️

Creep on over and join us for an evening of family fun entertainment. Come out dressed in your favorite costume and stroll from trunk to trunk collecting treats followed by live entertainment, vendors, character visits, and activities the entire family will enjoy! If you'd like to participate in the event as trunk or treat vendor register at [brec.org/fullmoonfete](http://brec.org/fullmoonfete).

INDEPENDENCE COMMUNITY PARK

Oct. 28 / 4-7 p.m.

More info: 📧 [recreationevents@brec.org](mailto:recreationevents@brec.org)

To register: 🌐 [brec.org/fullmoonfete](http://brec.org/fullmoonfete)

### VETERAN'S DAY AT THE ZOO

Join us as we recognize and honor both those actively serving and those who have served in the armed forces, as well as a special Bald Eagle chat.

BREC'S BATON ROUGE ZOO

Nov. 11 / 9:30 a.m.-4 p.m. / Grounds close at 5 p.m.

Military veterans and active military: FREE admission for you + up to five guests; must present a valid military ID.

Non-military:

Adults: \$8.75 / Seniors: \$7.75

Ages: 2-12: \$5.75 / Ages 2 + younger: Free

### ZOOLIGHTS 🖐️

Join us for a festive trail through the Zoo and check out more than 50 illuminated display sculptures of animals and traditional holiday displays.

BREC'S BATON ROUGE ZOO

Nov. 24-Dec. 30 (Closed Christmas Eve and Christmas Day)

5:30-8 p.m. / Grounds close at 9 p.m.

Adults + Teens: \$5 / Seniors: \$4

Ages 2-12: \$3 / Members: \$3





### REINDEER RIDE

Welcome the holiday season with a unique, 8-mile nighttime family bike ride. Ride up the levy from Farr Park campground to downtown Baton Rouge to be a part of Baton Rouge's Downtown Christmas Lighting Celebration. Participants will leave the levy trail head and join in a colorful bike parade through the downtown area, participate in the many fun activities and return together. Bring your own bike or rent one of ours!

#### FARR PARK EQUESTRIAN CENTER

Dec. 1 / 6-8 p.m. / Ages: 8+ / \$10

More info: [✉ outdooradventure@brec.org](mailto:outdooradventure@brec.org)

To register: [🌐 webtrac.brec.org](http://webtrac.brec.org)

### GINGERBREAD HOUSE MAKING

Don't make it through the holiday season without building at least one gingerbread house! It's a winter time MUST DO! Participants will enjoy a movie and hot chocolate while building their houses.

NORTH STREET PARK - Dec. 2

SAIA PARK - Dec. 9

KERNAN AVENUE PARK - Dec. 19

6-8 p.m. / Ages: 3+ / \$5/participant

To register: [🌐 webtrac.brec.org](http://webtrac.brec.org)

### RECYCLED GINGERBREAD VILLAGES

Holiday decorations don't have to be store-bought only. Gather your cardboard boxes, empty egg and eggnog cartons, colorful odds and ends, and extra crafting supplies to help build your community's Recycled Gingerbread Village. Sip hot chocolate and enjoy this collective and festive arts & crafts project for all ages and abilities.

CHURCH STREET PARK

Oct. 27 / 4-7 p.m.

HIGHLAND ROAD COMMUNITY PARK

Dec. 6 / 5:30-7:30 p.m.

JACKSON COMMUNITY PARK

Dec. 22 / 4-6 p.m.

Age: 6+ / \$5 per person / Free for ages 5 + younger

All children must be accompanied by an adult

To register: [🌐 webtrac.brec.org](http://webtrac.brec.org)

### LET IT SNEAX

Come and celebrate the holiday season with us! Come stuff your stockings on your stroll down candy cane lane, take photos with Santa, enjoy live music, new holiday photo ops, s'mores & hot chocolate while watching movies on the big screen, playing in the snow & much more! If you'd like to participate in the event as a Candy Cane Lane vendor register at [brec.org/letitsneax](http://brec.org/letitsneax).

PERKINS ROAD COMMUNITY PARK

Dec. 9 / 5-8 p.m.

More info: [✉ recreationevents@brec.org](mailto:recreationevents@brec.org)

To register: [🌐 brec.org/letitsneax](http://brec.org/letitsneax)

### MAGNOLIA MOUND CREOLE CHRISTMAS + HOLIDAY FAIR

Come visit us for this annual holiday event featuring seasonal decorations in the historic house. We will have traditional songs in French and Spanish, period demonstrations, folk crafts, and booths from local vendors. We'll close out the event with the annual bonfire to welcome Papa Noel!

MAGNOLIA MOUND

Dec. 10 / noon-5 p.m.

More info: [✉ magnoliamount@brec.org](mailto:magnoliamount@brec.org)

📞 225-343-4955

### REINDOG RUN

We are calling dogs of all sizes (and their people) to join us for our 1st annual Reindog Run! Whether you have a Scrappy Doo or a Clifford we have a spot for them! Register by November 17th to get a race shirt. Stick around after the race for awards, food, and drinks. Prizes will be awarded to the first place in every weight category as well as overall best costume between all sizes.

COMITE RIVER PARK

Dec. 16 / 9 a.m.-1 p.m. / Ages: 8+ / \$35

More info: [✉ outdooradventure@brec.org](mailto:outdooradventure@brec.org)

To register: [🌐 webtrac.brec.org](http://webtrac.brec.org)



# CAMPS

## BLUEBONNET SWAMP HOLIDAY CAMPS

Bring your child to Bluebonnet Swamp for three days of fun during the holiday breaks. They'll be treated to nature-based activities such as arts and crafts, live animal encounters, hikes, games, and a themed afternoon snack. Each day will be comprised of different activities, and campers will need to bring a bag lunch and drink each day. Activities for fall camp will focus on living off the land and preparing for the cold; activities in winter camp will revolve around hibernation and migration. Registration opens the first day of the month prior to camp.

### BLUEBONNET SWAMP NATURE CENTER

**Autumn Harvest Camp:** Nov. 20-22

**Winter Wonders Camp:** Dec. 27-29

7:30 a.m.-5:30 p.m. / Ages: 6-12 / \$75

To register: [webtrac.brec.org](https://webtrac.brec.org)

[Bluebonnet Swamp Nature Center](#)

More Info: [225-757-8905](tel:225-757-8905) [sguidry@brec.org](mailto:sguidry@brec.org)

## FALL HOLIDAY CAMP

BREC offers holiday camps, which are perfect for school vacations, filled with friends and fun activities. Your children are going to have a blast! This fun filled holiday themed camp includes various arts and crafts, guest speakers, games, friends, a field trip, and much more. Holiday camps will follow the school schedules of Zachary, Baker, Central, and East Baton Rouge Parish Schools systems.

ANNA T. JORDAN COMMUNITY PARK + CHURCH STREET PARK + FOREST COMMUNITY PARK + HIGHLAND ROAD COMMUNITY PARK + INDEPENDENCE COMMUNITY PARK + LOVETT ROAD PARK

Nov. 20-22 / 7:30 a.m.-5:30 p.m. / Ages: 6-12 / \$75

To register: [webtrac.brec.org](https://webtrac.brec.org)

## FARR HOLIDAY RIDING CAMPS

Our Holiday Riding Camps will teach your child basic riding skills, horsemanship, horse care, and stable management, in addition to fun crafts and friendship, while enjoying the beautiful weather outdoors. These camps will focus on either English or Western riding in a smaller, more concentrated environment. Campers are taught by an instructor specializing in the chosen discipline. All campers will have their own horse and ride for a total of 1-2 hours per day. Maximum of 10 riders per camp.

### FARR PARK EQUESTRIAN CENTER

#### Fall Camp

Western: Nov. 20 / English: Nov. 21

\$75 per camper

#### Winter Camp

Western: Dec. 20 + 21 / English: Dec. 27 + 28

\$150 per camper

8 a.m.-1 p.m. / Ages: 9-12

More info: [camille.chapman@brec.org](mailto:camille.chapman@brec.org)

[225-769-7805](tel:225-769-7805)

To register: [webtrac.brec.org](https://webtrac.brec.org)

## MAGNOLIA MOUND FALL HOLIDAY CAMP

Campers will explore early 19th century history and make Fall-themed crafts. From touring the historic house to playing old-fashioned games, campers will love learning about the past. The two days will end with an open-hearth cooking demonstration and a visit to the museum store.

### MAGNOLIA MOUND

Nov. 20-21 / 9 a.m.-4 p.m. / Ages: 7-12 / \$50

Early Drop-off: 7:30 a.m.-9 a.m.

Late pick-up: 4-5:30 p.m.

More info: [magnoliamount@brec.org](mailto:magnoliamount@brec.org)

[225-343-4955](tel:225-343-4955)

To register: [webtrac.brec.org](https://webtrac.brec.org)

Registration deadline: Nov. 16

## NATURE EXPLORERS FALL CAMP

Nature Explorers Camp is all about getting your child outside for a hands-on exploration of nature. Bring your camper to Palomino Drive Park for three days of fun during the Spring Break. Campers will explore the park, learn exciting facts, and enjoy the great outdoors. Our activities are designed to keep your camper engaged, learning, and having a blast throughout the entire camp. These will include themed outdoor games, fishing, crafts, and experiments. Each day will be comprised of different activities, and campers will need to bring a bag lunch, drink, and snack each day. This Fall Camp will be focused on preparing for winter the natural way, looking both at how plants and animals transition for winter and how Nature Explorers can help with this process.

### PALOMINO DRIVE PARK

Nov. 20-21 / 7:30 a.m.-5:30 p.m. / Ages: 7-12 / \$50

More info: [conservation@brec.org](mailto:conservation@brec.org) [225-218-4979](tel:225-218-4979)

To register: [webtrac.brec.org](https://webtrac.brec.org)

## SPACE EXPLORATION CAMPS

Campers review highlights of American space program via interactive demos and games. Each session has a theme, chemical rocket construction and science inquiry activities. Registration deadline is one week before camps begin.

### HIGHLAND ROAD PARK OBSERVATORY

**Fall Camp:** Nov. 20-21 / 8 a.m.-5 p.m.

**Winter Camp:** Dec. 27-28 / 8 a.m.-5 p.m.

Ages: 9-13 / \$55

To register: [webtrac.brec.org](https://webtrac.brec.org)



## HOLIDAY BASKETBALL CAMP

Sports Academy Holiday Camps will teach new drills and techniques that will help you dominate on the court during this holiday season! Campers will go through various stations, competitions and five vs. five games that will help improve their overall game as well as individual abilities and basketball IQ.

### SPORTS ACADEMY

**Fall Camp:** Nov. 20-22 / 7:30 a.m.-5:30 p.m.

Ages: 6-14 / \$42 per child

Registration: Oct. 1-31

### Winter Camp

Session 1: Dec. 18-22 / 7:30 a.m.-5:30 p.m.

\$70 per child

Session 2: Dec. 26-29 / 7:30 a.m.-5:30 p.m.

\$56 per child

Session 3: Jan. 2-5 / 7:30 a.m.-5:30 p.m.

\$56 per child

Ages: 6-14

Registration: Nov. 1-30

## HOLIDAY SPORTS CAMP

BREC Kathy Drive Sport Camps will teach new drills and techniques that will help you dominate on the court and field during this holiday season! Campers will go through various stations, competitions and focus on various sports like baseball, football, and soccer, that will help improve their overall game as well as individual abilities in various sports.

### KATHY DRIVE PARK

**Fall Camp:** Nov. 20-22 / 7:30 a.m.-5:30 p.m.

Ages: 6-14 / \$42 per child

Registration: Oct. 1-31

### Winter Camp

Session 1: Dec. 18-22 / 7:30 a.m.-5:30 p.m.

\$70 per child

Session 2: Dec. 26-29 / 7:30 a.m.-5:30 p.m.

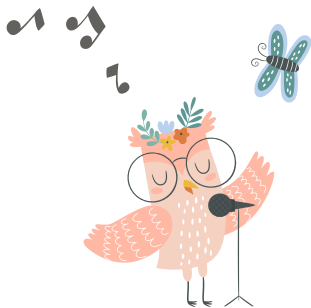
\$56 per child

Session 3: Jan. 2-5 / 7:30 a.m.-5:30 p.m.

\$56 per child

Ages: 6-14

Registration: Nov. 1-30



## WINTER HOLIDAY CAMP

BREC offers holiday camps, which are perfect for school vacations, filled with friends and fun activities. Your children are going to have a blast a fun-filled variety of holiday themed recreational curriculum to include various arts and crafts, guest speakers, passive and active games, socialization with peers and much more.

### LOVETT ROAD PARK

Dec. 26-29 + Jan. 2-5 + 8-9 / 7:30 a.m.-5:30 p.m.

ANNA T. JORDAN COMMUNITY PARK + FOREST COMMUNITY PARK + INDEPENDENCE COMMUNITY PARK + HIGHLAND ROAD COMMUNITY PARK

Dec. 18-22 + 26-29 + Jan. 2-4 / 7:30 a.m.-5:30 p.m.

### CHURCH STREET PARK

Dec. 21-22 + 26-29 + Jan. 2-5 / 7:30 a.m.-5:30 p.m.

Ages: 6-12

More info: [brec.org/holidaycamp](https://brec.org/holidaycamp)

To register: [webtrac.brec.org](https://webtrac.brec.org)

## WINTER HOLIDAY ART CAMP

Campers will create "cool," holiday inspired art projects in an atmosphere of fun and encouragement. Art projects includes paint, clay, watercolor, pastels and mixed media.

### MITLON J. WOMACK PARK

Dec. 20-23 / 8 a.m.- 5 p.m. / Ages: 7-10 / \$75

More info: [robin.mcandrew@brec.org](mailto:robin.mcandrew@brec.org)

☎ 225-272-9200 EXT 1505

To register: [webtrac.brec.org](https://webtrac.brec.org)

Limit of 20

## ZOO HOLIDAY CAMPS

The Baton Rouge Zoo offers Zoo Camps year-round including spring break, fall break, and winter break. Every Zoo Camp offers guided hikes through the Zoo, behind-the-scenes tours, animal encounters, keeper chats, crafts, games and snacks.

### BREC'S BATON ROUGE ZOO

**Fall Camp:** Nov. 20 + 21 + 22

**Winter Camp:** Dec. 27 + 28 + 29

9 a.m.-4 p.m. / Ages: 6-12

Early drop off at 7:30 a.m. / Late pick up at 5:30 p.m.

No additional fee

Daily: \$35/child

Fall + Winter camps offer single day registration.

Refunds are not available.

To register: ☎ 225-775-3877 [brzoo.org](https://brzoo.org)



## TENNIS + PICKLEBALL HOLIDAY CAMPS

### GOBBLE GOBBLE TENNIS CAMP

Three-day camp includes tennis instruction.

CAPITAL ONE TENNIS CENTER AT  
CITY-BROOKS COMMUNITY PARK  
Nov. 20-22 / 8:30 a.m.-12:30 p.m.  
Ages: 6-16 / \$130

To register: 📍 webtrac.brec.org 📞 225-343-3767  
Registration deadline: Nov. 17

### JINGLE BELLS TENNIS CAMP

Four-day camp includes tennis instruction.

CAPITAL ONE TENNIS CENTER AT  
CITY-BROOKS COMMUNITY PARK  
Dec. 18-21 / 8:30 a.m.-12:30 p.m.  
Ages: 6-16 / \$160

To register: 📍 webtrac.brec.org 📞 225-343-3767  
Registration deadline: Dec. 15

### FALL HOLIDAY YOUTH PICKLEBALL CLINIC

Clinic offers options for one or two days.

GREENWOOD COMMUNITY PARK TENNIS CENTER  
Nov. 20 + Nov. 22 / 8:30-11:30 a.m. / Ages: 6-17  
One Day: \$10  
Two Days: \$18

To register: 📍 webtrac.brec.org  
Registration deadline: Nov. 17

### WINTER HOLIDAY YOUTH PICKLEBALL CLINIC

Clinic offers options for one, two, or three days.

GREENWOOD COMMUNITY PARK TENNIS CENTER  
Dec. 18 + Dec. 20-21 / 8:30-11:30 a.m. / Ages: 6-17  
One Day: \$10  
Two Days: \$18  
Three Days: \$25

To register: 📍 webtrac.brec.org  
Registration deadline: Dec. 15

### TURKEY JUNIOR TENNIS CAMP

Three-day camp includes tennis instruction.

HIGHLAND ROAD COMMUNITY PARK TENNIS CENTER  
Nov. 20-22 / Ages: 4-16  
Full day: 9 a.m.-2 p.m.  
\$45/day or \$125/all three days  
Half day: 9-11:30 a.m.  
\$35/day or \$98/all three days

To register: 📍 webtrac.brec.org 📞 225-766-0247  
Registration deadline: Nov. 17 / \$10 late fee

### HOLIDAY JUNIOR TENNIS CAMP

Four-day camp includes tennis instruction.

HIGHLAND ROAD COMMUNITY PARK TENNIS CENTER  
Dec. 18-21 / Ages: 4-16  
Full day: 9 a.m.-2 p.m.  
\$45/day or \$165/all four days  
Half day: 9-11:30 a.m.  
\$35/day or \$128/all four days

To register: 📍 webtrac.brec.org 📞 225-766-0247  
Registration deadline: Dec. 15 / \$10 late fee

### AFTER HOLIDAY JUNIOR TENNIS CAMP

Three-day camp includes tennis instruction.

HIGHLAND ROAD COMMUNITY PARK TENNIS CENTER  
Dec. 27-29 / Ages: 4-16  
Full day: 9 a.m.-2 p.m.  
\$45/day or \$125/all three days  
Half day: 9-11:30 a.m.  
\$35/day or \$98/all three days

To register: 📍 webtrac.brec.org 📞 225-766-0247  
Registration deadline: Dec. 22 / \$10 late fee

### FALL HOLIDAY JUNIOR TENNIS CAMP

Three-day camp includes tennis instruction.

INDEPENDENCE COMMUNITY PARK TENNIS CENTER  
Nov. 20-22 / Ages: 5-16 / \$115  
8:30 a.m.-4:30 p.m. (Monday + Tuesday)  
8:30-11:30 a.m. (Wednesday)

To register: 📍 webtrac.brec.org 📞 225-923-2792  
Registration deadline: Nov. 17

### HOLIDAY JUNIOR TENNIS CAMP

Four-day camp includes tennis instruction.

INDEPENDENCE COMMUNITY PARK TENNIS CENTER  
Dec. 18-21 / Ages: 5-16 / \$155  
8:30 a.m.-4:30 p.m. (Monday-Wednesday)  
8:30-11:30 a.m. (Thursday)

To register: 📍 webtrac.brec.org 📞 225-923-2792  
Registration deadline: Dec. 15



# LEISURE + ENRICHMENT

 [BREC.ORG/KIDSANDCOMMUNITY](http://BREC.ORG/KIDSANDCOMMUNITY)

Opportunities listed below are free for all ages unless otherwise noted. An additional 20% fee will be applied to all paid programming for out-of-parish participants. This does not apply to admission into facilities.

## EVENTS

### ADULT GAME NIGHT

Come and join us in the night full of fun that will include refreshments and a variety of games that include dominoes, card games, bingo and many more. Sit back, relax, and enjoy a game night strictly meant for adults.

JEFFERSON HIGHWAY PARK

Sept. 16 / 6-8 p.m. / Ages: 21+ / \$5 per participant

To register:  [webtrac.brec.org](http://webtrac.brec.org)

### BREW AT THE ZOO

Join the Baton Rouge Zoo Foundation at our 9th annual Brew at the Zoo! Guests are welcome to come to the Zoo for an evening of food, beer, music, and more. Sample dozens of craft beers and munch on many flavorful favorites from local eateries. This event sells-out every year!

BREC'S BATON ROUGE ZOO

Sept. 29 / Time TBD / Ages: 21+

Designated Driver: \$30 / General Admission: \$60

VIP: \$125 / Pre-purchased tickets are required

More info:  [brzoobrew.org](http://brzoobrew.org)

 [info@brzfoundation.org](mailto:info@brzfoundation.org)

### FAMILY GAME NIGHT

There's nothing wrong with some friendly, family competition. Join us for family game night and choose from a variety of activities, board games and teambuilding games.

BAKER RECREATION CENTER

Wednesday / Sept. 6-Dec. 27 / 6-8 p.m.

CEDAR RIDGE DRIVE PARK

Friday / Sept. 15 + Oct. 20 + Nov. 17 / 6-7:30 p.m.

PERKINS ROAD COMMUNITY PARK

Tuesday / Sept. 12 + Oct. 10 + Nov. 14 / 6-7:30 p.m.

Age: 3+

To register:  [webtrac.brec.org](http://webtrac.brec.org)

### SATURDAYS IN THE PARK

It's not just another ordinary day in the park. During Saturdays in the Park, there will be extra excitement to add to your day of play! Roll out of bed and into your local park for pop-up activities to entertain, engage, and inspire all ages.

ANNA T. JORDAN COMMUNITY PARK + ANTIOCH BOULEVARD PARK + BAKER RECREATION CENTER + HIGHLAND ROAD COMMUNITY PARK + INDEPENDENCE COMMUNITY PARK + JACKSON COMMUNITY PARK + WEBB PARK  
Sept. 9 + Oct. 14 + Nov. 11 + Dec. 9 / 10 a.m.-noon  
Ages: 3+

### GLOW IN THE PARK

Ready... Set... Glow! Gather friends and family for glow-in-the-dark team-based games at locations throughout the parish.

HIGHLAND ROAD COMMUNITY PARK

**Volleyball:** Sept. 18 / 6-7:30 p.m. / Ages: 16+

JACKSON COMMUNITY PARK

**Kickball:** Oct. 12 / 6-7:30 p.m. / Age: 3+

NORTH STREET PARK

**9 Square:** Nov. 15 / 6-7:30 p.m. / Age: 3+

ANNA T. JORDAN COMMUNITY PARK

**Volleyball:** Nov. 16 / 6-7:30 p.m. / Age: 16+

\$5 per participant

To register:  [webtrac.brec.org](http://webtrac.brec.org)

### FOOD TRUCK FRENZY

There's no need to have to go sit inside a restaurant to get good quality food when food trucks have unique, affordable, super tasty bites you can enjoy conveniently! Come check out BREC's Food Truck Frenzy with a variety of food trucks in one space while also enjoying vendors, live music, and activities for the whole family enjoy.

CITY BROOKS COMMUNITY PARK

Sept. 23 / noon-4 p.m.

Do you have a food truck and would like to be a part of this event?

More info:  [recreationevents@brec.org](mailto:recreationevents@brec.org)

To register:  [brec.org/foodtruckfrenzy](http://brec.org/foodtruckfrenzy)





# PROGRAMS

## LEISURE

### SOCIAL SEWING + QUIRKY QUILTING

Come join the sewing and quilting community! Participants will work together to make a individual quilt tops, perfect their sewing skills, and learn different patterns from each other. You will need a large cutting board, rotary cutter, long ruler, sharp scissors, straight pins, 100% cotton thread, a machine you are familiar with, or BREC can loan you a machine.

LOVETT ROAD PARK

Wednesday / Aug. 9-Dec. 20 / 10 a.m.-1 p.m.

Ages: 20+

To register: [webtrac.brec.org](https://webtrac.brec.org)

### COZY KIDS KNITTING CLUB

Unwind with a tight-knit group of young fiber artists to learn the basics of knitting and complete a beginner's project over each 4-week session.

CEDAR RIDGE DRIVE PARK

Tuesday

Session 1: Sept. 5 + 12 + 19 + 26

Session 2: Oct. 3 + 10 + 17 + 24

4-6 p.m. / Ages: 8-12 / \$70 per 4-week session

More info: [jason.hoggatt@brec.org](mailto:jason.hoggatt@brec.org)

To register: [webtrac.brec.org](https://webtrac.brec.org)

### POP UP ART

Come by the park for Pop-Up Art under the pavilion and create a masterpiece to take home!

HIGHLAND ROAD COMMUNITY PARK 11 a.m.-noon

PERKINS ROAD COMMUNITY PARK 1-2 p.m.

Friday / Sept. 8-Dec. 29 / Ages: 2+

To register: [brec.org/popupart](https://brec.org/popupart)

### KIDS IN THE KITCHEN

Kids in the Kitchen are mixing it up! This culinary arts program will teach young people how to use common ingredients and follow kid-friendly recipes for delicious and nutritious snacks.

GUS YOUNG AVENUE PARK + SAIA PARK

Wednesday / Sept. 6-Dec. 20 / 5:30-6:30 p.m.

Ages: 7-12

To register: [webtrac.brec.org](https://webtrac.brec.org)

### CHEFS R' US

Thyme to turnip the beef! Using basic kitchen appliances and easy-to-follow recipes, Chefs R' Us will offer a fresh take on classic food favorites, inspiring young people to experiment with new ingredients and create more nutritious culinary masterpieces the entire family can enjoy.

FOREST COMMUNITY PARK

Sept. 12-Dec. 19 (2nd + 4th Tuesday of the month)

HIGHLAND ROAD COMMUNITY PARK

Sept. 14-Dec. 14 (2nd + 4th Thursday of the month)

6-7 p.m. / Ages: 6-12 / \$15 per month

To register: [webtrac.brec.org](https://webtrac.brec.org)

### MOVIE IN THE PARK

Grab your fishing pole and bait and join BREC for an evening movie at the park. Hook, line and sinker. Movie themed activities will take place prior to the start of the movie. To see what movie will be showing visit [BREC.org/movieinthepark](https://BREC.org/movieinthepark).

ZACHARY COMMUNITY PARK

Sept. 29 / 5:30-8:30 p.m. / Ages: 3+

### SWEET TOOTH DESIGNS

Learn the basics of decorating and creating a work of art cupcake while enjoying a delicious cupcake treat. All participants will get to take their cupcake home to show their family.

JEFFERSON HIGHWAY PARK - Oct. 4

HIGHLAND ROAD COMMUNITY PARK - Nov. 1

CHURCH STREET PARK - Nov. 15

6-7 p.m. / Ages: 3+ / \$5 per participant

To register: [webtrac.brec.org](https://webtrac.brec.org)

### LET'S GEAUX TIE DYE

Let's learn the basic art of tie dye! Join us to create your own colorful pieces. Bring your shirt, bag, hat or anything you would like to tie dye.

JEFFERSON HIGHWAY PARK

Oct. 13 / noon-2 p.m. / Age: 3+ / \$5 per participant

More info: [jeremy.isaac@brec.org](mailto:jeremy.isaac@brec.org)

225-928-7860

To register: [webtrac.brec.org](https://webtrac.brec.org)

### FAMILY FUN FEST

Looking for a family fun event? Look no more! Bring your family and friends and join us as we celebrate the return of fall by enjoying BREC's Family Fun Fest! There will be carnival games & prizes, live entertainment, food vendors, crafts, music, inflatables, and much more!

ZACHARY COMMUNITY PARK

Nov. 18 / 1-4 p.m.

More info: [recreationevents@brec.org](mailto:recreationevents@brec.org)

## DESIGN BY ME 101

Come have some fun at our Cameo 101 Design by Me class where we will teach you how to create and personalize your own shirt, mug, cap and that is made for the one and only you! Participants must bring with them their own laptop and items to personalize.

GUS YOUNG AVENUE PARK

Monday / Sept. 11-Dec. 18 / 6-7:30 p.m. / Ages: 16+

To register: [webtrac.brec.org](https://webtrac.brec.org)

## ENRICHMENT

### LITTLE ADVENTURES

We offer a Parent Day Out program that gives children ages 3 to 4 the opportunity to experience a new adventure each week through the power of play. The recreation curriculum focuses on socialization, creativity and exploring your interest through play.

HIGHLAND ROAD COMMUNITY PARK

Friday / Sept. 1- Dec. 29 / 9 a.m.-noon / Ages: 3-4

\$15 per month

To register: [webtrac.brec.org](https://webtrac.brec.org)

### AFTERSCHOOL ADVENTURES

Afterschool just got a little more adventurous! We will focus on health & wellness and STEAM activities, as well as offer homework assistance. We will work with local schools to provide transportation to the program and start early on EBRPSS early dismissal days.

ANTIOCH BOULEVARD PARK + LOVETT ROAD PARK + CHURCH STREET PARK

Monday-Friday / Aug. 9-May 22 / 3:30-5:30 p.m.

Ages: 6-12 / \$80/month

To register: [webtrac.brec.org](https://webtrac.brec.org)

### CAMP-IN

Get inspired through games, craft, and activities highlighting our favorite summer camp moments from specialty weeks such as Full STEAM Ahead, Animal Adventures, Spy Camp, Gamer's Paradise, and more! Campers should bring anch and two snacks and come dressed for indoor and outdoor activities. Camp-In will attempt to follow the area school schedule.

CHURCH STREET PARK

Sept. 18 + Oct. 9 + 10 + 11

LOVETT ROAD PARK

Sept. 18 + Oct. 20 + 23 + 24 + Dec. 22

ANTIOCH BOULEVARD PARK

Oct. 12 + 13 + 16

7:30 a.m.-5:30 p.m. / Ages: 6-12 / \$25 per day

To register: [webtrac.brec.org](https://webtrac.brec.org)



### BREC BEGINNINGS

BREC offers this part-time program as an opportunity for children ages 3-4 to experience and observe their natural world through observation and play. The curriculum focuses on inspiring curiosity, creativity, and socialization through arts and crafts, songs, physical activity, and more.

FOREST COMMUNITY PARK + JACKSON

COMMUNITY PARK + CHURCH STREET PARK

Monday-Thursday / Sept. 5 - May 5 / 9 a.m.-noon

Ages: 3-4 / \$70/month

To register: [webtrac.brec.org](https://webtrac.brec.org)

### KIDS AT PLAY

BREC offers a safe place with structured activities such as homework time, physical activities, and healthy snacks during afterschool hours. For more information contact the facility.

ALSEN PARK + GUS YOUNG AVENUE PARK + MILLS AVENUE PARK + CADILLAC STREET PARK + PLANK

ROAD PARK + SAIA PARK

Monday-Friday / Sept. 11-Dec. 15 / 4-6 p.m.

Ages: 6-12

### THE KIDS' COVE

All kids ages 6 to 12 are welcome to enter The Kids Cove! Let's hang out on Tuesday and Thursdays for some fun like video games, board games or karaoke! Registration required before attending.

ANNA T. JORDAN COMMUNITY PARK + GUS YOUNG AVENUE PARK

Tuesday + Thursday / Sept. 12-Dec. 21 / 5-6:30 p.m.

Age: 6-12

To register: [webtrac.brec.org](https://webtrac.brec.org)

## TEENS

### YOUNG ENTREPRENEURS

In this program, teens will develop entrepreneurial skills such as strategic planning, marketing, and production. Participants will use simple materials in innovative ways to explore their creativity and develop business acumen, grow in confidence and leadership skills.

INDEPENDENCE COMMUNITY PARK

Tuesday / Oct. 3 + 10 + 17 + 24 / 4-6 p.m.

Ages: 13-17 / \$20 per person for 4 sessions

More info: [afaq.mansour@brec.org](mailto:afaq.mansour@brec.org)





# SCIENCE + NATURE

 [BREC.ORG/SCIENCEANDNATURE](http://BREC.ORG/SCIENCEANDNATURE)

Opportunities listed below are free for all ages unless otherwise noted. An additional 20% fee will be applied to all paid programming for out-of-parish participants excluding the Baton Rouge Zoo unless otherwise noted. Additional fees are not applied to admission costs.

## EVENTS

### PERSEID METEOR SHOWER

Every summer the Earth plows through a trail of cometary debris. HRPO hosts a viewing session during the nighttime period with the best chance of high meteor rates. Depending on conditions, viewing may shift by one day.

HIGHLAND ROAD PARK OBSERVATORY

Aug. 12 / 10 p.m.-2 a.m.

### WONDERS OF WILDLIFE

Join us at Bluebonnet Swamp as we explore the wonders of our urban wildlife and learn how we can all get along. Did you find a baby bird or injured animal? Worried about the snakes in your backyard and how to keep raccoons out of your garbage can? Need some tips on how your pets and the wildlife in your backyard can coexist? Find out the answers to these questions and more! We will have educational presentations, games, live animals, trail activities, crafts and more so come on out for a great time at the Swamp!

BLUEBONNET SWAMP NATURE CENTER

Aug. 19 / 9 a.m.-4 p.m.

Ages: 3-17 / \$4

Ages: 18+ / \$5

More Info:  225-757-8905  [sguidry@brec.org](mailto:sguidry@brec.org)


### INVASIVE SPECIES WORKSHOP

Want to learn how we handle horrible invaders? This is the workshop for you! Join us for a morning where we will spell out the worst offenders and how you can get rid of them. Take back your yard or property and help us create healthy habitats for local wildlife.

FRENCHTOWN CONSERVATION AREA

Aug. 26 / 9 a.m.-noon / Ages: 16+

More info:  [conservation@brec.org](mailto:conservation@brec.org)

To register:  [volunteer.brec.org](mailto:volunteer.brec.org)

### PARTIAL SOLAR ECLIPSE

Baton Rouge will be experiencing two eclipses within a 6 month timeframe! Join HRPO for the first of the two with greater eclipse coverage here in Baton Rouge, than what we saw in in 2017. Follow HRPO's social media and website for comprehensive information, links and safety guidelines for this impressive celestial event.

HIGHLAND ROAD PARK OBSERVATORY

Oct. 14 / 9 a.m.-2:30 p.m.



### GEAUX FISH! CATFISH RODEO

Grab your fishing pole and head out with the family to GEAUX Fish! Our Geaux Fish Rodeos are a great opportunity to introduce new anglers to the sport of fishing or for the old veteran to test their skills. We will be stocking the pond with adult channel catfish to ensure you have plenty to catch and prizes galore. Don't miss this chance to bring home channel catfish for dinner and spend the day outside with the family. This event is weather dependent. Space is limited; Please register early to guarantee a spot!

LOCATION TBD

Oct. 14 / 7:30-11:30 a.m.

More info: [✉ conservation@brec.org](mailto:conservation@brec.org)

[☎ 225-218-4979](tel:225-218-4979)

### THE SPOOKY SPECTRUM

As darkness falls, the spookiness rises. Come visit—if you dare—as HRPO's annual family-friendly tribute to the bizarre and freakish takes place. We'll delve into the eerie side of astronomy, physics and aeronautics. Be warned—we want to make you think and have a spooktacular time!

HIGHLAND ROAD PARK OBSERVATORY

Oct. 28 / 6-10 p.m. / Ages 6+

### CONSERVATION VOLUNTEER PROJECT

We need your help with a conservation related project! Help us to make healthier habitats in EBR parish. All supplies provided, more details closer to the event.

LOCATION TO BE ANNOUNCED

Nov. 4 / 9 a.m.-noon / Ages: 10+

More info: [✉ conservation@brec.org](mailto:conservation@brec.org)

To register: [📍 volunteer.brec.org](http://volunteer.brec.org)

### THE EDGE OF NIGHT - FALL

Which stars are seen first? Are Mercury and Venus or the Moon out? Is that moving object a plane, a satellite or space debris? There is no other time like twilight. Bring it into your life!

HIGHLAND ROAD PARK OBSERVATORY

Nov. 10 / 4:45-6:45 p.m.

### ART FOR ANIMALS FESTIVAL

The Zoo invites the community to engage with wildlife through the arts! A special art gallery inspired by animals, wildlife and nature will be on exhibit during the day of the event. After admiring the artwork, enjoy a day at the zoo filled with other artful activities such as live paintings, live music, crafts for kids, and more.

BREC'S BATON ROUGE ZOO

Nov. 11 / 9:30 a.m.- 4 p.m. / Grounds close at 5 p.m.

Adults: \$8.75 / Seniors: \$7.75

Ages: 2-12: \$5.75 / Ages 2+ younger: Free

### ZOO RUN

BREC'S BATON ROUGE ZOO

Nov. 18

More info: [📍 brzoo.org](http://brzoo.org)

### BREC GREEN FORCE VOLUNTEER TRAINING

BREC is looking to train a dedicated force of volunteers in resource management, education and programming. Learn how to help keep our habitats clean and healthy and earn rewards doing it. Only 20 volunteer hours a year commitment! Whether you want to learn more about invasive species removal, trail clearing or how to be a program or event aid, this training is for you! The training counts towards your total hours for the year. Lunch provided.

FRENCHTOWN CONSERVATION AREA

Dec. 2 / 8 a.m.-4:30 p.m. / Ages: 16+

Registration closes Nov. 20

Background check required.

More info: [✉ conservation@brec.org](mailto:conservation@brec.org)

To register: [📍 volunteer.brec.org](http://volunteer.brec.org)

## GEMINID METEOR SHOWER

The Geminids are one of the major meteor showers of the year—the only one caused by an asteroid. Come join us and see if we can catch some “earthgrazers”! Due to conditions, viewing may shift by one day.

### HIGHLAND ROAD PARK OBSERVATORY

Dec. 13 / 9 p.m.-1 a.m.

## 2024 PREVIEW PARTY

All the excitement of the coming calendar year wrapped up into one fantastic night. Come learn what to expect from HRPO, BRAS and LSU for celestial events, lectures and more!

### HIGHLAND ROAD PARK OBSERVATORY

Dec. 29 / 6-10 p.m.

# PROGRAMS

## SCIENCE

### SCIENCE ACADEMY

Cadets are brought into the wonderful world of astronomy and give an exciting chance to explore gravity, simple machines, stars, spacecraft, meteors, the Earth-Moon system, asteroids and comets, and the electromagnetic spectrum. Registration closes the Friday before class.

### HIGHLAND ROAD PARK OBSERVATORY

Aug. 5 + 12 + 19 + Sept. 2 + 9 + 16 + 30 + Oct. 7 + Nov. 4 + 11 + 18 + Dec. 2 + 9 + 16 + 30

10 a.m.-noon / Ages: 8-12 / \$5

To register: [webtrac.brec.org](https://webtrac.brec.org)

### STEM EXPANSION

Advanced demonstrations and topic extensions for an older teen crowd. Archived experiments including some not seen in over fifteen years, are joined with timely, cutting-edge demos and concepts. Certificates earned by participants. Registration closes the Friday before class.

### HIGHLAND ROAD PARK OBSERVATORY

Aug. 26 + Sept. 23 + Oct. 21 + Nov. 25 + Dec. 23

3:30-7:30 p.m. / Ages: 12-16 / \$15

To register: [webtrac.brec.org](https://webtrac.brec.org)

### FRIDAY NIGHT LECTURE SERIES

For twenty-five years this program has given patrons histories and possible futures. Skygazing tips, physics phenomena, space programs and famous events are discussed. Lectures happen most Friday nights, please check the website for more information.

### HIGHLAND ROAD PARK OBSERVATORY

7:30-8:30 p.m. / Ages: 14+

More info: [brec.org/observatory](https://brec.org/observatory)

## EVENING SKY VIEWINGS

HRPO houses a 50-cm reflector, a 40-cm reflector and several smaller telescopes to bring the majesty of the night sky to the public. Trained operators, sharing duties via a rotating roster, work throughout the year in shifts. Each operator has a pre-planned list of objects to highlight. However, requests will be taken if there is time and if all present have viewed the previous target. Sky viewings happen most Friday and Saturday Nights please check the website for more info.

### HIGHLAND ROAD PARK OBSERVATORY

Fridays / 8:30-10 p.m.

Saturdays / 7:30-10 p.m.

More info: [brec.org/observatory](https://brec.org/observatory)

### PLUS NIGHT

Get something extra beyond standard viewing: sky tours, physical science demos, “birth” stars and a marshmallow roast. Each Plus Night has a unique theme with fun activities for all ages.

### HIGHLAND ROAD PARK OBSERVATORY

Aug. 19 + Sept. 9 + Nov. 18 / 7-10 p.m.

### SOLAR VIEWING

HRPO staff shows the Sun via projection, filtered optical light and hydrogen-alpha. Patrons will see any sizable sunspots or flares.

### HIGHLAND ROAD PARK OBSERVATORY

Aug. 26 + Sept. 23 + Oct. 21 + Nov. 25 + Dec. 23  
noon-2 p.m.

## NATURE

### SWAMP BIRD WALKS

Join us for early morning hours on the first Saturday of every month to check out the feathered friends that call Bluebonnet Swamp home. Led by a member of the Baton Rouge Audubon Society, visitors enjoy a morning hike through the forest and swamp while identifying various bird species. Bird-watching techniques and identification tips are also discussed. Beginners are welcome. Field guides and binoculars optional but recommended. For more information on birding and the Bluebonnet Bird Monitoring Project, visit [braudubon.org](https://braudubon.org).

### BLUEBONNET SWAMP NATURE CENTER

Aug. 5 + Sept. 2 + Oct. 7 + Nov. 4 + Dec. 2 / 7-9 a.m.

General admission fees apply / Pass holders are free

More Info: [225-757-8905](https://225-757-8905) [sguidry@brec.org](mailto:sguidry@brec.org)

### ZOO + ME MORNINGS

This program is designed for children accompanied by a parent or guardian. Every Zoo & Me Morning incorporates exciting activities including animal encounters, art projects, “Zooper” snacks and many other hands-on projects that you and your child can enjoy together.

### BREC'S BATON ROUGE ZOO

Aug. 8 + Sept. 12 + Oct. 10 + Nov. 7 + Dec. 12

Ages: 3-5

\$18 per child with one guardian

\$30 for two children with one guardian

Pre-registration and advanced payment is required.

To register: [225-775-3877](https://225-775-3877) [brzoo.org](https://brzoo.org)



## SWAMP FLASHLIGHT NIGHT

We welcome you to enjoy the Swamp at night by visiting us during our Swamp Flashlight Night! Staff will be facilitating live animal encounters throughout the event. Enjoy a self-guided leisurely night hike with your family and friends or join a guided hike for an additional fee; space is limited so registration in advance is preferred and done by calling our front desk. The swamp trails can be really dark at night, so don't forget to bring a flashlight. If you don't have one, check out our gift shop for some options. Closed-toe shoes and insect repellent are recommended. Please note that admission to the trails ends at 8:15 p.m.

### BLUEBONNET SWAMP NATURE CENTER

Aug. 11 + Nov. 10 / 5-9 p.m.

General admission fees apply / Pass holders are free

Guided Hike \$5 (Ages 3+)

Registration on-site required for Guided Hike

More Info: 📞 225-757-8905 📧 [sguidry@brec.org](mailto:sguidry@brec.org)

## NATURE NIGHT HIKE AND CAMPFIRE

Join us on a Friday night for a great way to say hello to summer! The program will include a night hike learning about local ecology and nocturnal animals and will include activities and games. Come enjoy this great way to get the family out after the daytime heat. Preregistration is required and spaces are limited. Children must be registered and accompanied by a registered adult.

### FOREST COMMUNITY PARK

Aug. 18 / 7-9 p.m.

### BLACKWATER CONSERVATION AREA

Sept. 8 / 7-9 p.m.

Ages: 7+ / \$5

More info: 📧 [conservation@brec.org](mailto:conservation@brec.org)

📞 225-218-4979

To register: 🌐 [webtrac.brec.org](http://webtrac.brec.org) (WebTrac # 520210)

## URBAN NATURE HIKE

Interested in exploring the nature oasis next door or looking to take your neighborhood walks to the next level? Our Urban Hike series is a great start! Geared toward nature novices of all ages, participants will enjoy a leisurely walk through a BREC park while learning some fun facts about the park's natural areas and the fundamentals of adventuring in the great outdoors. Preregistration is requested for all attendees and all children must be accompanied by an adult.

### ZACHARY COMMUNITY PARK

Aug. 29 / 5:45-7:15 p.m.

### PERKINS ROAD COMMUNITY PARK

Sept. 12 / 5:45-7:15 p.m.

Ages: 6+

More info: 📧 [conservation@brec.org](mailto:conservation@brec.org)

📞 225-218-4979

To register: 🌐 [webtrac.brec.org](http://webtrac.brec.org) (WebTrac # 520210)

## FIRST SATURDAYS AT FRENCHTOWN

Start your month off on the right foot by spending a little time in nature at Frenchtown Road Conservation Area. These activities will focus on connecting both nature lovers and nature novices alike with the inner workings of the largest conservation area in the BREC Conservation system. And just like the site, activities and topics will change monthly. The October session, please sign up for the Frenchtown Revive Your Mind Hike. Preregistration is required and all children must be accompanied by an adult.

### FRENCHTOWN ROAD CONSERVATION AREA

Sept. 2 + Nov. 4 + Dec. 2 / 9:30-11:30 a.m.

Ages: 7+ / \$5

More info: 📧 [conservation@brec.org](mailto:conservation@brec.org)

📞 225-218-4979

To register: 🌐 [webtrac.brec.org](http://webtrac.brec.org) (WebTrac # 520212)

## TRAIL TIME FOR TODDLERS

Trail Time for Toddlers is a unique opportunity for children, ages 2-5, and their parents/guardians to make new friends while learning about nature through trail walks and themed indoor and outdoor activities. Come enjoy the sights and sounds of the swamp, arts and crafts, storytelling, animal encounters, and healthy snacks. Themes change from week to week, and none are repeated within a calendar year. Participants sign up for a month at a time (4 weekly classes) and can choose to attend the Wednesday or Thursday session. NEW this year - each month will also feature a special Saturday class for participants who are unable to attend one of our weekday sessions. Registration for each month begins on the 1st of the month prior.

### BLUEBONNET SWAMP NATURE CENTER

Sept. 6-28 + Oct. 4-26 + Nov. 1-9

Wednesday or Thursday

\$40/session (4 classes) / November is \$20 (2 classes)

Sept. 2 + Oct. 7 + Nov. 4 / Saturday / \$10/class

9:30-11:30 a.m. / Ages: 2-5 (with accompanying adult)

More Info: 📞 225-757-8905 📧 [sguidry@brec.org](mailto:sguidry@brec.org)

To register: 🌐 [webtrac.brec.org](http://webtrac.brec.org) 📍 On-Site

## SWAMP SCHOOL

Picking up where Trail Time for Toddlers leaves off, Swamp School continues nature-based education for kids ages 6-10. With more of a focus on science content, we will explore the outdoors, do arts and crafts, meet interesting animals, and have healthy snacks. This is a perfect opportunity for homeschool parents to supplement their science education curricula in a natural setting. The program is held four times a month and themes change each class. Registration for each month begins on the 1st of the month prior.

### BLUEBONNET SWAMP NATURE CENTER

Sept. 5-26 + Oct. 3-24 + Nov. 7-14 / 2-4 p.m.

Ages: 6-10 (with accompanying adult)

\$40/session (4 classes) / November is \$20 (2 classes)

More Info: 📞 225-757-8905 📧 [sguidry@brec.org](mailto:sguidry@brec.org)

To register: 🌐 [webtrac.brec.org](http://webtrac.brec.org) 📍 On-Site



## DOG DAY AT THE SWAMP

With our Dog Days, BSNC drops its "No Pets" policy and opens its doors and trails to pets 4 days out of the year! All pets are welcome, but they must be on a leash and have their vaccinations current.

### BLUEBONNET SWAMP NATURE CENTER

Sept. 16 + Dec. 16 / 9 a.m.-5 p.m.

General admission fees apply / Pass holders are free

More Info: ☎ 225-757-8905 📧 [sguidry@brec.org](mailto:sguidry@brec.org)

## REVIVE YOUR MIND NATURE HIKE

Forest bathing, Nature Rx, Ecotherapy... it's been called many things, but the message is the same. NATURE is good for you! If life has you spinning and you feel out of balance this is the hike for you. We will be using time in nature to slow down and take a breakthrough mindful, purposeful observation. We will be hiking off the beaten path at one of BREC's Conservation Areas using the outdoors as a window to relaxation and a free mind. Join us to get a well-deserved dose of nature at its finest. This program is geared towards adults, but people 13 and older are welcome to attend with a guardian. Pre-registration is required.

### BLACKWATER ROAD CONSERVATION AREA

Sept. 23 / 9:30-11:30 a.m.

### FRENCHTOWN ROAD CONSERVATION AREA

Oct. 7 / 9:30-11:30 a.m.

Ages: 13+ / \$10

More info: 📧 [conservation@brec.org](mailto:conservation@brec.org)

☎ 225-218-4979

To register: 🌐 [webtrac.brec.org](http://webtrac.brec.org) (WebTrac # 520210)

## CONSERVATION WOODS WALKS

Explore the natural places throughout the parish just beyond your backyard at BREC Conservation Areas with staff on a Conservation Woods Walk. Further off the beaten path, these walks are geared toward providing an interactive experience at the Conservation areas and trails throughout the parish to make these special natural spaces more familiar. Though open to both novices and experts alike, these walks are more primitive and more rigorous than your regular walk in the park. Preregistration is required and all children must be accompanied by adults.

### KENDALWOOD CONSERVATION AREA

Nov. 18 / 9:30-11:30 a.m.

### SANDY CREEK COMMUNITY PARK

Dec. 16 / 9:30-11:30 a.m.

Ages: 7+ / \$5

More info: 📧 [conservation@brec.org](mailto:conservation@brec.org)

☎ 225-218-4979

To register: 🌐 [webtrac.brec.org](http://webtrac.brec.org) (WebTrac # 520211)



# FACILITY + RENTAL INFO



## FACILITY INFO

BREC maintains over 175 parks throughout East Baton Rouge Parish that feature a wide variety of quality facilities with family-oriented leisure activities for all ages and population groups.

**TO LEARN MORE** about all BREC facilities visit [brec.org/facilities](http://brec.org/facilities).



## RENTAL INFO

BREC offers a wide range of rental opportunities across the parish for recreational activities, parties, events, meetings, family reunions and more!

**TO LEARN MORE** about all available rental spaces visit [brec.org/rentals](http://brec.org/rentals).





JOIN OUR  
*gold medal  
winning team!*



**DISCOVER YOUR CAREER + APPLY TODAY!**

*You Can Expect:*

- **Flexible work hours + schedules**
- **Health benefits**
- **Paid time off**
- **Bi-weekly pay**
- **Employee discounts**
- **Development + advancement opportunities**
- **On-the-job training**

**Full-Time + Part-Time + Seasonal**

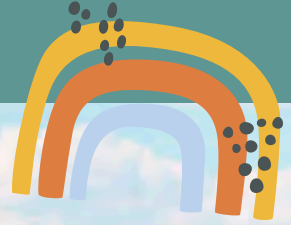
All positions starting at a minimum of \$12 per hour.



For more information or to apply, visit  [BREC.ORG/CAREERS](https://www.brec.org/careers)

BREC IS AN EQUAL OPPORTUNITY EMPLOYER

It is **BREC's mission** to contribute to a  
**HEALTHIER, *more vibrant community*** by providing  
*exceptional parks* + OPEN SPACES  
+ **recreation experiences for**  
all of East Baton Rouge Parish.



**BREC.ORG**