

WELCOME!

Public Meeting
City-Brooks Park & Lakes Vision Plan



June 11, 2026



SASAKI

BATON ROUGE'S GREATEST RECREATION ASSET

DOWNTOWN

LSU



Downtown

LSU

**A CHANCE TO THINK ABOUT A CONNECTED
PARK SYSTEM TO SERVE ALL...**



**ENVIRONMENTAL
INTEGRATION**



**INCREASING
CONNECTIVITY**



**A PLACE TO
CELEBRATE
HISTORY &
CULTURE**



**PROVIDING
PROGRAMS FOR
PEOPLE**



ENVIRONMENTAL INTEGRATION



INCREASING CONNECTIVITY

A vibrant scene at a public splash pad. In the foreground, a young boy in a yellow shirt and dark shorts is stepping on a water jet. To his right, a girl in a red shirt and shorts is walking. Further right, a girl in a white shirt and pink shorts is also playing. The background is filled with other children and adults, some sitting on stone steps, others standing. The sky is bright blue with scattered white clouds. The overall atmosphere is lively and joyful.

**PROVIDING
PROGRAMS FOR
PEOPLE**



**A PLACE TO
CELEBRATE
HISTORY &
CULTURE**

Introduction

ONCE-IN-A-GENERATION OPPORTUNITY

Focus Area #4: Greenway Funding & Maintenance Models

- Welcoming Everyone
- By the end of the first three years ...
- Test operational models with the City Brooks Park, Health Loop, and Scottenville Parkway projects.
- Develop a plan for preferred model(s)

Relevant Recommendations

16.1: Create Functional Use

IMAGINE YOUR PARKS
PARKS WITH PURPOSE

University Lakes

The University Lakes Restoration Project team reminds the public that beginning June 4, 2025, May Street will be closed to all traffic between Dalrymple Drive and East Lakeshore Drive. This applies to vehicles, cyclists, and pedestrians.

REIMAGINE THE LAKES

Exciting changes are coming to the University Lakes System. A partnership between LSU and state and local partners is working to create a more sustainable lakes system through ambitious environmental restoration that will also add tremendous recreational value for all people of Baton Rouge.



With 97 acres, this is Baton Rouge's Park. Minutes from downtown and LSU this existing gem has served the community for generations and should have a continued future as an inclusive civic landscape for all.

The Vision City Brooks Park Plan will:

- **Preserve the park's historic assets including the golf course, clubhouse and heritage trees**
- **Provide new activities to an expanded community**
- **Cherish the parks existing designed and natural landscape**
- **Connect to surrounding neighborhoods through breaking down barriers and building paths**

When all these are true, this park will serve EBR for generations to come.

TODAY, YOU'LL LEARN ABOUT

The Process

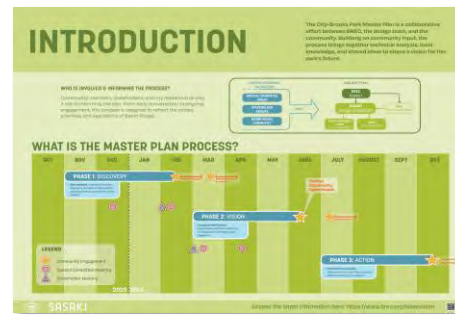
The Site Analysis

Design Alternatives

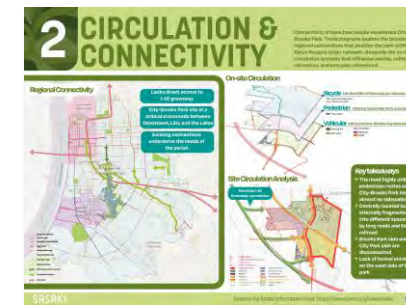
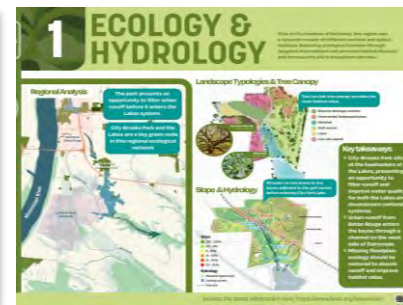
Tell us your thoughts!

LEARN MORE AT THE BOARDS!

The Process



The Site Analysis



Design Alternatives



Introduction

THE PROCESS

WHAT IS THE MASTER PLAN PROCESS?



THE LISTENING PROCESS

3,000+ Survey Responses

**Stakeholder Meetings (8) +
Small Group Discussion (14)**

Special Committee Meetings (4)

*Thank you
for your
input!*



PUBLIC ENGAGEMENT PROCESS

PROJECT KICK-OFF

FEB

Other Inputs:

- 4 Special Committee Meetings
- 2 Rounds of Stakeholders Discussions
- 4 Special Topic Discussions
- News Articles
- Individual Outreach



FIRST SURVEY WINDOW

1,084 Survey Results
120 Map Results
 Responses were concentrated **west** of the site



SURVEY EXTENSION

2,067 Survey Results
243 Map Results
 Responses were concentrated **west** of the site (too!)



APR

MAY

JUN

JUL

TODAY!

CONTINUED OUTREACH



VESTED INTEREST GROUPS



14 Vested Interest Groups conversations:

Why did we add these conversations?

Survey feedback provided valuable input, while also revealing gaps in representation. Vested Interest Group conversations helped bring more direct community perspectives into the master plan.

- Friends of City Park
- Envision Baton Rouge
- Together Baton Rouge
- Forum 225, Strong Towns
- Old South Baton Rouge Economic Redevelopment Group, Garden District Civic Association, Beauregard Town
- Success Labs, Little Rouge Hen, SERVE Louisiana
- Baton Rouge Convention
- Media Group
- Lakeshore HOA
- Councilwoman Coleman
- City Park Patrol HOA
- LSU Community University Partnerships
- BREC & Partner Boards
- LSU Student / future faculty

EMERGING THEMES

Environment

~550 comments in both surveys

10 VIG discussions

Connectivity

~600 comments in both surveys

14 VIG discussions

Programs

~1,100 comments in both surveys

14 VIG discussions

Culture

~530 comments in both surveys

9 VIG discussions

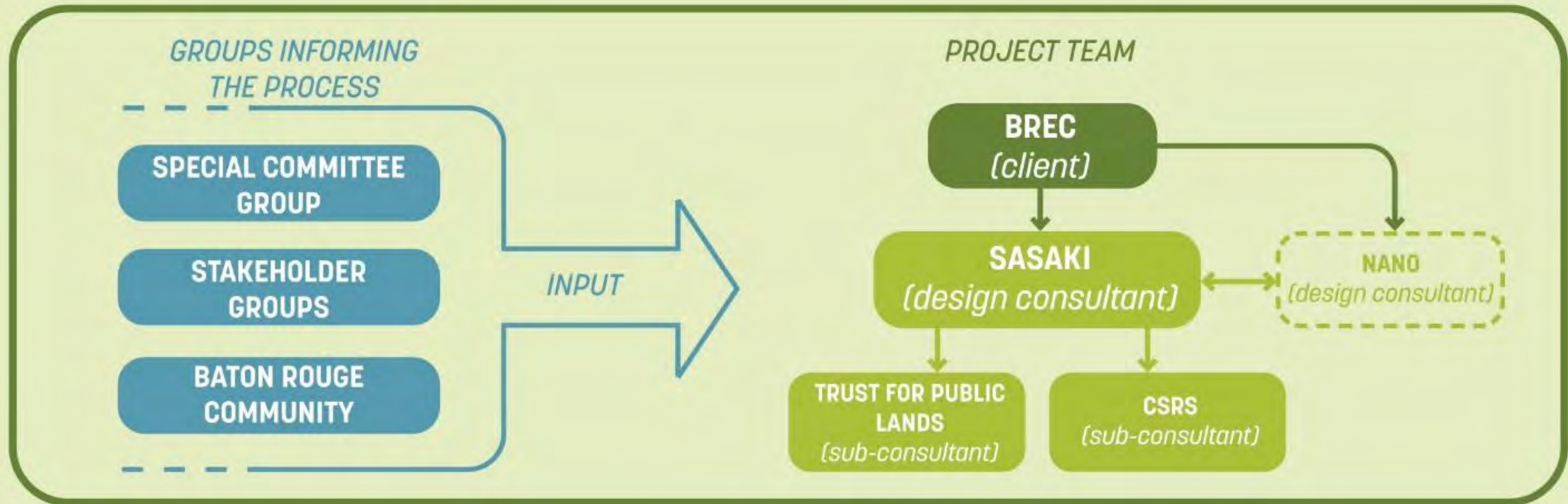
Golf

~1,300 comments in both surveys

13 VIG discussions

Introduction

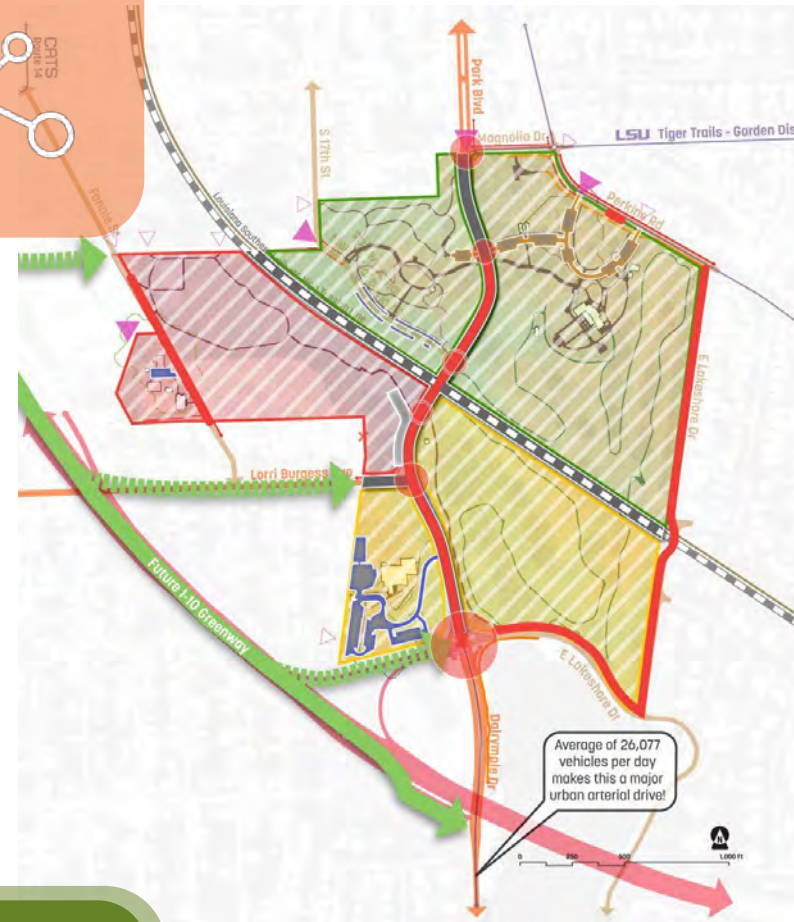
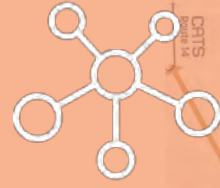
THE GUIDING STRUCTURE



Introduction

ROOTED ON EXISTING SITE CONDITION

CONNECTIVITY



HISTORY & CULTURE



Social Vulnerability Index
Disparities in socioeconomic status between the East and West sides of the park highlight the need to bridge gaps and improve access.

Brooks Park Pool



Cemetery not included



City Park Golf Course

City Park Pool
History of segregation



Old Perkin's Swamp
Historic conditions

ENVIRONMENT

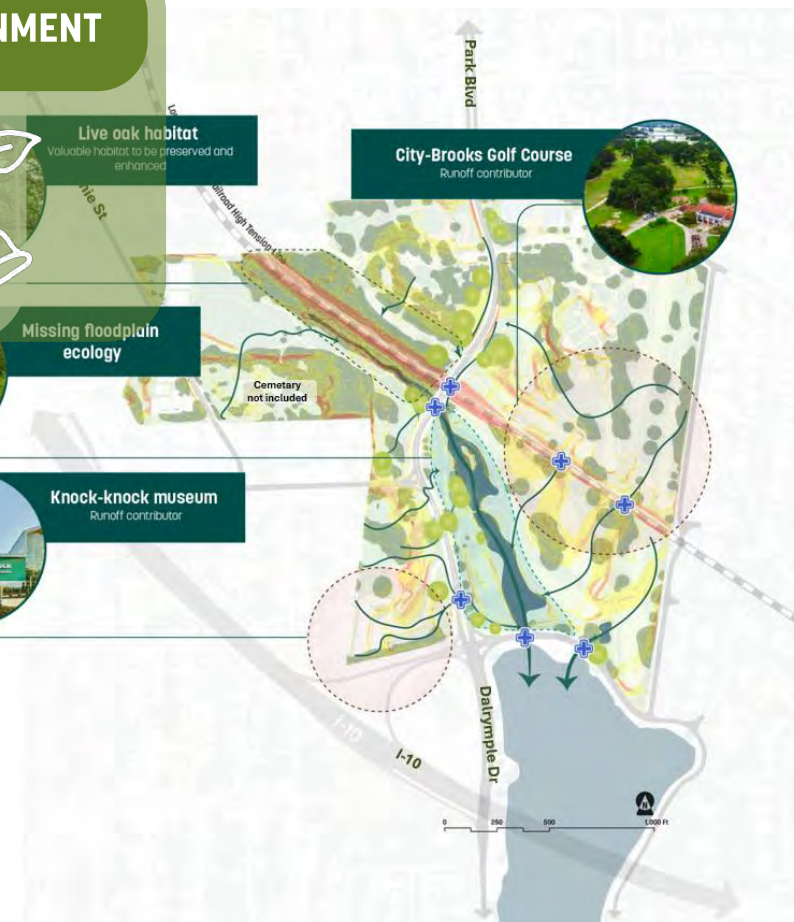


Live oak habitat
Valuable habitat to be preserved and enhanced

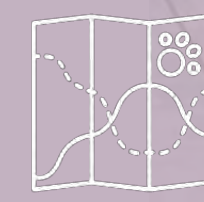
Missing floodplain ecology

Knock-knock museum
Runoff contributor

City-Brooks Golf Course
Runoff contributor

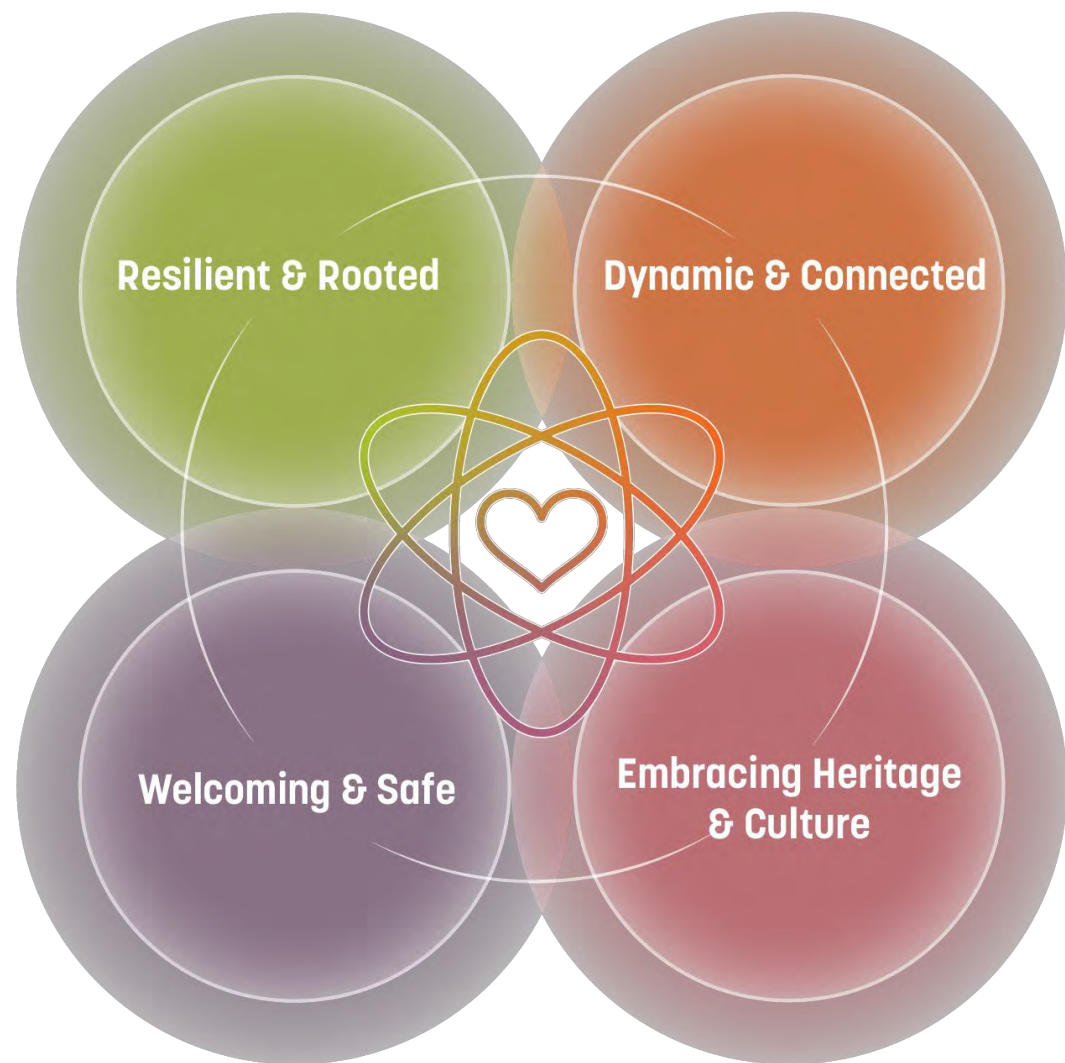


PROGRAM



Introduction

CORE VALUES & GUIDING PRINCIPLES



Resilient & Rooted

Celebrate the water and nature story

Dynamic & Connected

Connect the Park, the Lakes, and the Surrounding Neighborhoods

Welcoming & Safe

Create an Inclusive Park for the City and Its Neighborhoods

Embracing Heritage & Culture

Connect Baton Rouge's Heritage with Future Generations

These draft guiding principles build on the core values and engagement findings, and will be verified in the next public meeting.

Resilient & Rooted

***Celebrate the water
and nature story***

Let Place Lead Form

Build for Long-Term Stewardship

Invest in Living Systems

Design for Baton Rouge's Climate Reality

Connect People to Nature

Work with Water Systems

Dynamic & Connected

***Connect the Park, the Lakes,
and the Surrounding
Neighborhoods***

Stitch the Park Back Together

Make the Park a Daily Route

Design for Events Without Losing the Everyday

Layer Scales of Experience

Create Multiple Ways In

Weave the Park Into Baton Rouge



Welcoming & Safe
*Create an Inclusive Park
for the City and Its
Neighborhoods*

Make Arrival Intuitive

Let Activity Create Safety

Make Comfort Universal

Signal Care in Every Detail

Design for Being Seen



Embracing Heritage & Culture

***Connect Baton Rouge's
Heritage with Future
Generations***

Create a Park that Belongs to Everyone

Acknowledge the Full Narrative

Honor What Endures

Hold Space for Change

Center Community Memory

Site Alternatives

COMMON THEMES



Modified golf course footprint

For more information, see next two boards!

A refined golf course footprint preserves Bendelow's design while improving circulation and park programming.



Recreational Center on the west side of the park

The recreation center serves as a community hub, while the public track supports nearby schools.



Enhanced I-10 Greenway connections

Connecting to the I-10 Greenway improves access to downtown and was a top public priority.



Humanized roads with parallel parking, trees, and continuous sidewalks

Great parks need to have great edges, connection, and circulation. While we are proposing better connectivity, we will not alter the number of driving lanes.



Enhanced connections to University Lakes circulation

Improves regional connectivity along a popular recreation corridor.



Enhanced safety throughout the park

Support a safer park experience with improved maintenance, lighting, wayfinding, and day-to-day operations.

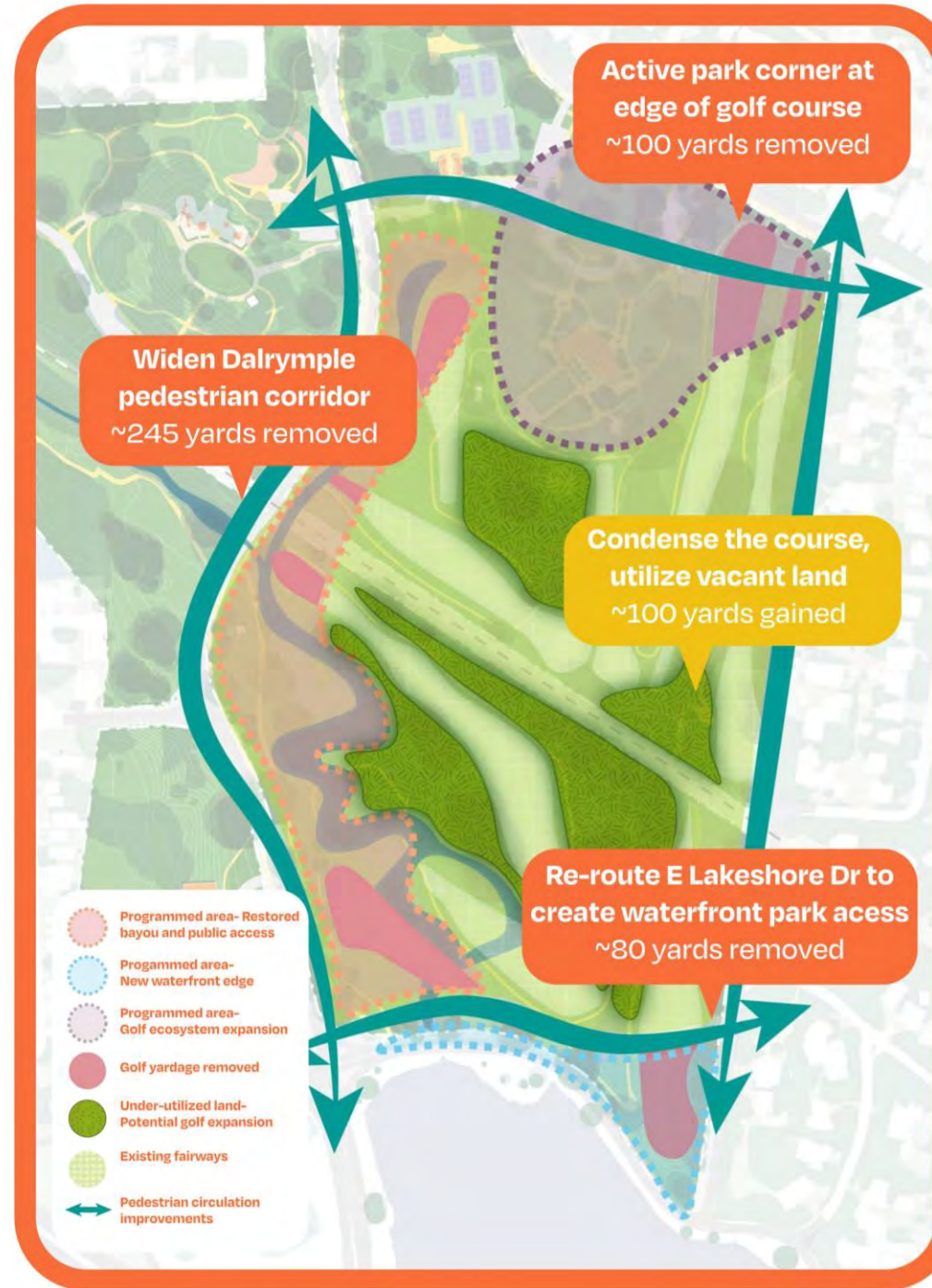
Site Alternatives

COMMON THEMES

Reviewed by SHPO and Peer Reviewed by a Golf Course Architect!



Existing Golf Course



Big Moves

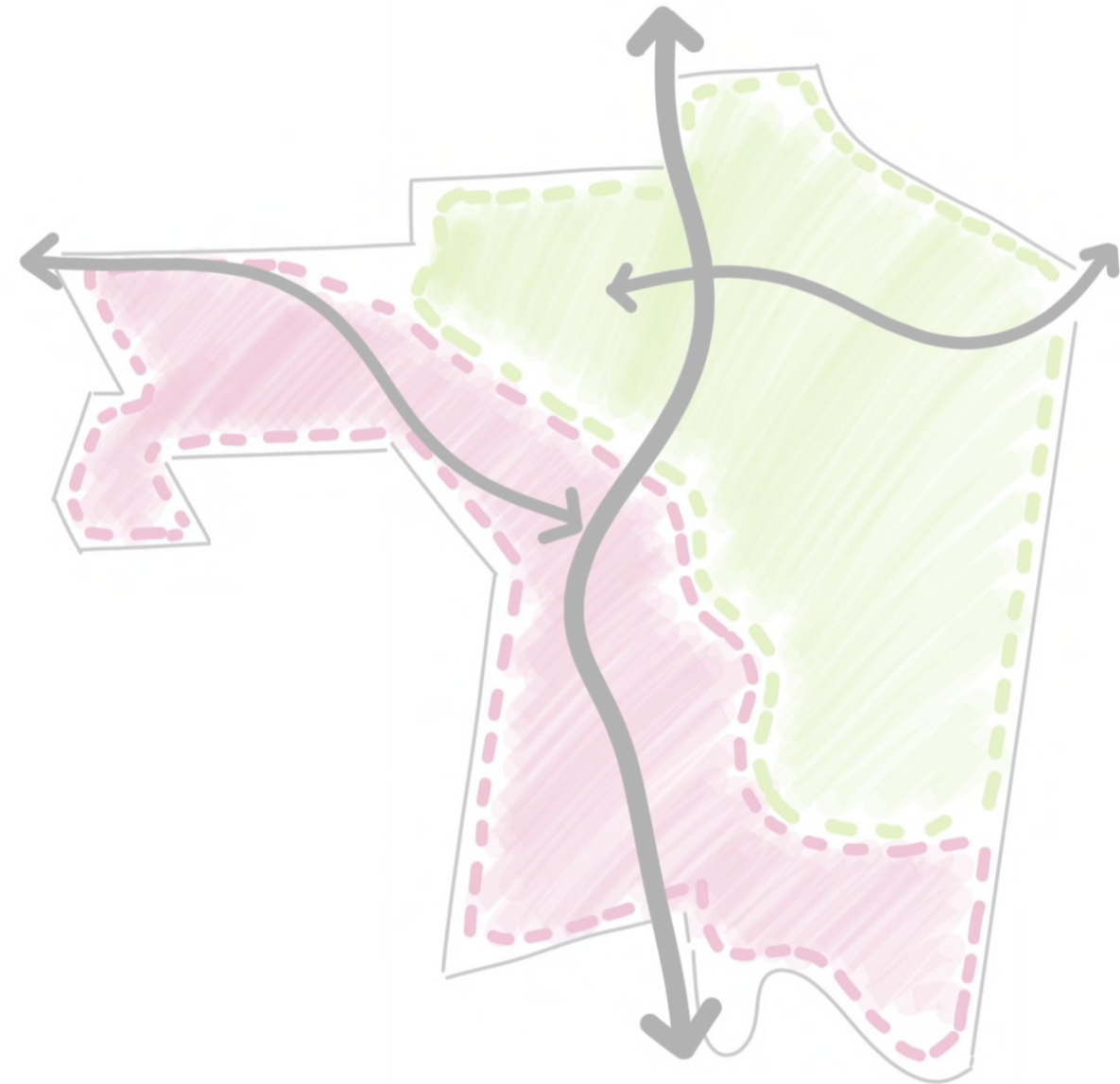


Proposed Routing

TWO ALTERNATIVES



The Big Loop



The Stitch

Concept Alternatives

Concept 1: The Big Loop

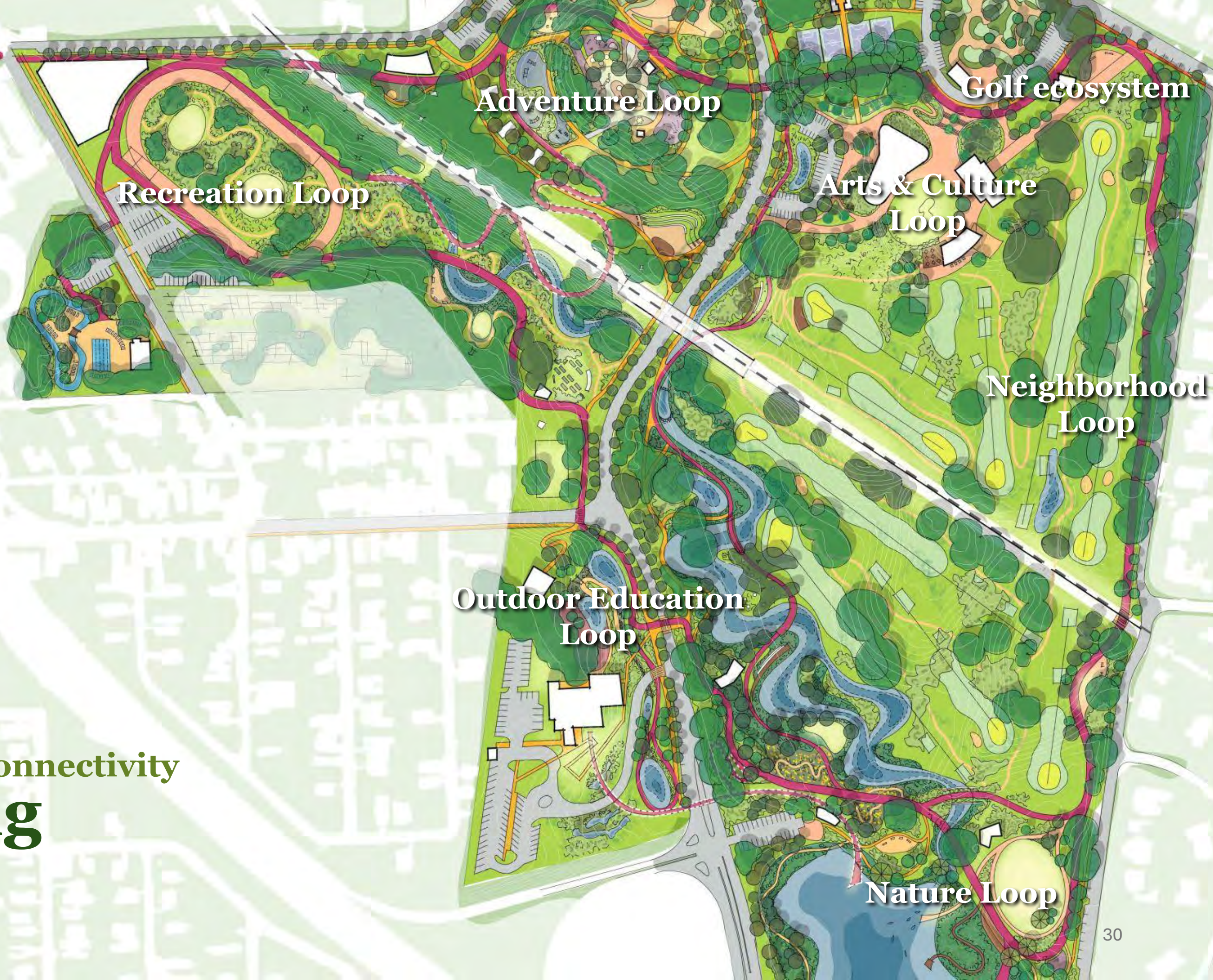


Concept 1: Connectivity

The Big Loop



Create an interconnected loop system as a primary organizing element for art, program, experience, and safety.



Concept 1: Connectivity
The Big Loop

Concept 1: Connectivity

The Big Loop



Concept 1: Active Recreation

An Active Loop



Recreational Opportunities organized around the main spine and nestled into a robust ecology.

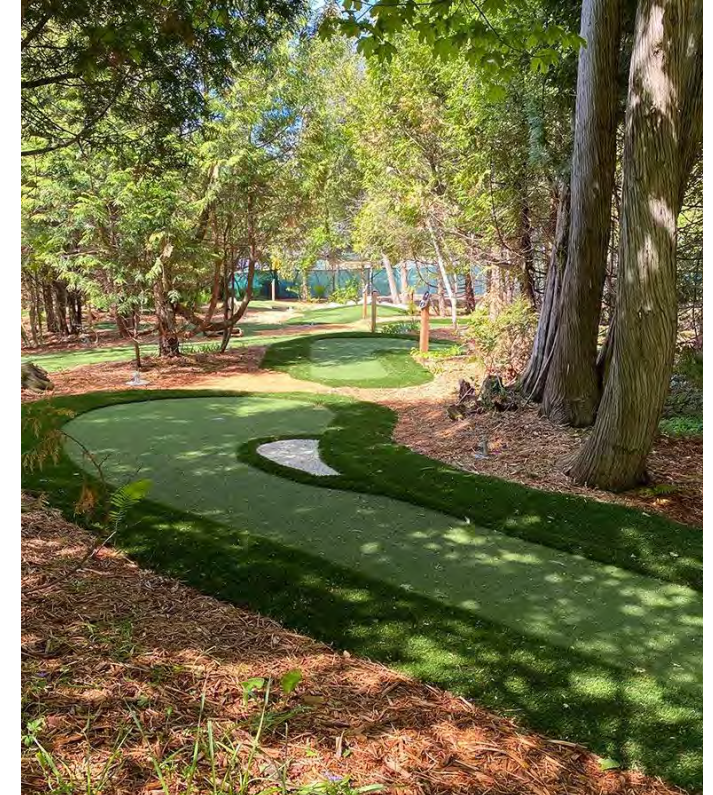
Concept 1: Active Recreation

An Active Loop



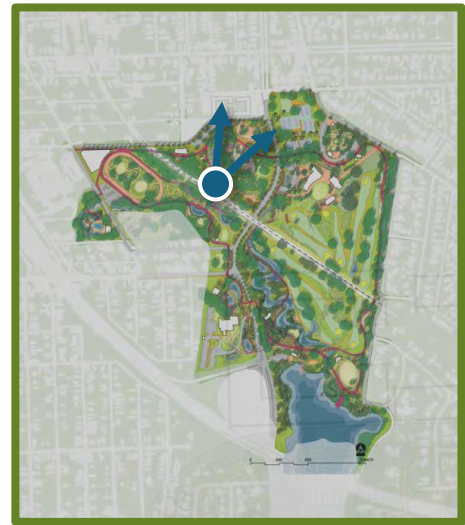
Concept 1: Active Recreation

An Active Loop



Concept 1: Active Recreation

Epic Playground Hill



EPIC PLAYGROUND HILL

PUBLIC RESTROOM

WATER PLAY

ADVENTURE
PLAYGROUND

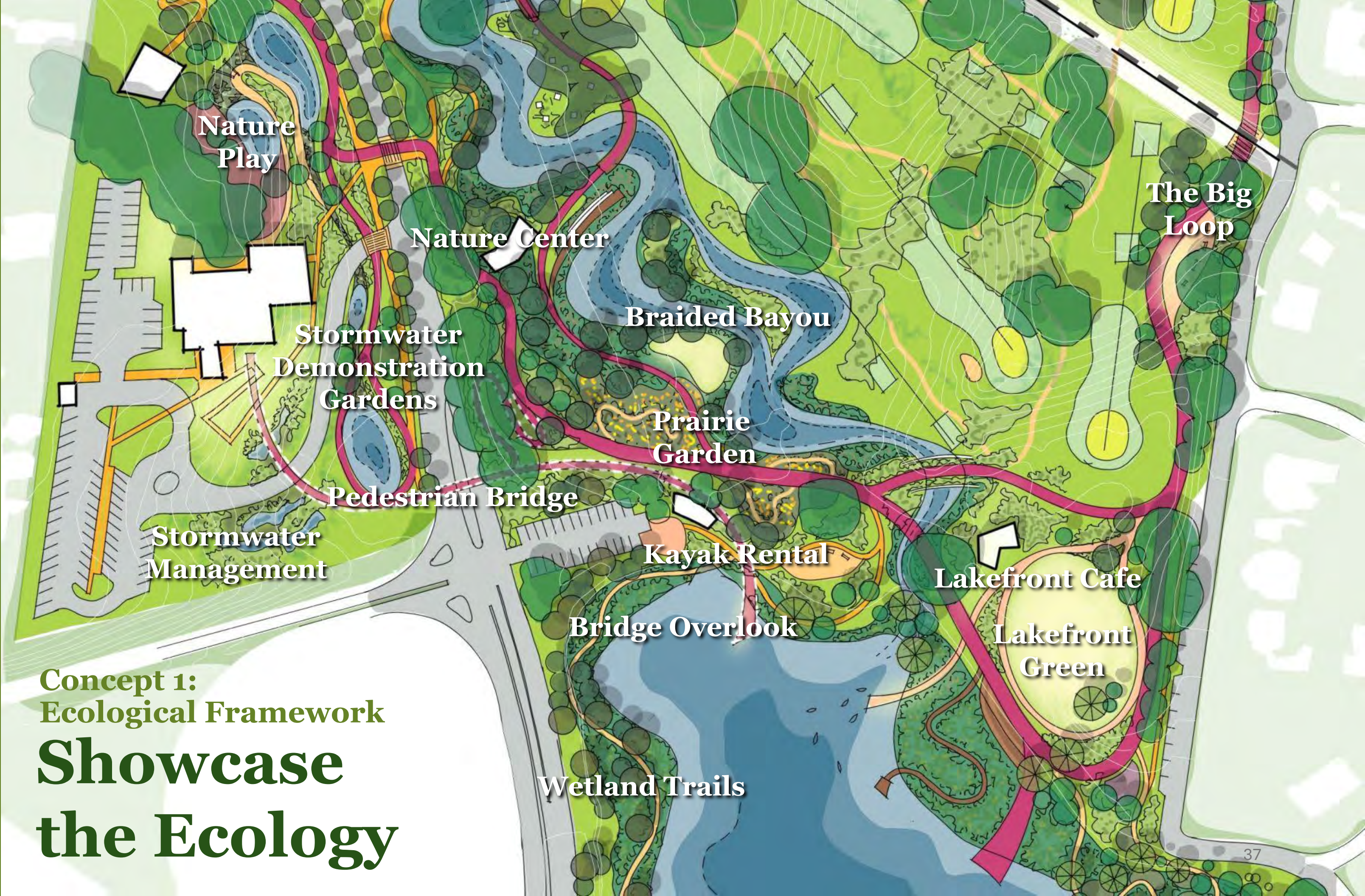
Picnic Hill becomes a playful landscape of climbing, water, and discovery anchored by a new playground and splash pad.

Concept 1: Ecological Framework

Showcase the Ecology



Bring the larger University Lakes system into the park to create a linear experience from Brooks Park to the water's edge.



Nature Play

Nature Center

The Big Loop

Stormwater Demonstration Gardens

Braided Bayou

Prairie Garden

Pedestrian Bridge

Stormwater Management

Kayak Rental

Lakefront Cafe

Bridge Overlook

Lakefront Green

**Concept 1:
Ecological Framework
Showcase
the Ecology**

Wetland Trails

Concept 1: Ecological Framework

Showcase the Ecology



Concept 1: Ecological Framework

Lakefront Experience

LAKEFRONT EXPERIENCE

Restored wetlands, boardwalks, and fishing piers reconnect visitors to the ecological richness of the lakefront.

BRAIDED BAYOU

CAFE & KAYAK RENTAL

PEDESTRIAN BRIDGE



Concept 1: Passive Program

Invite Exploration



Enhanced connection to nature along the entire loop with an emphasis on connection people to water and place

Concept 1: Passive Program

Invite Exploration



Concept 1: Passive Program

Invite Exploration



Concept 1: Passive Program

Oak Canopy Walk

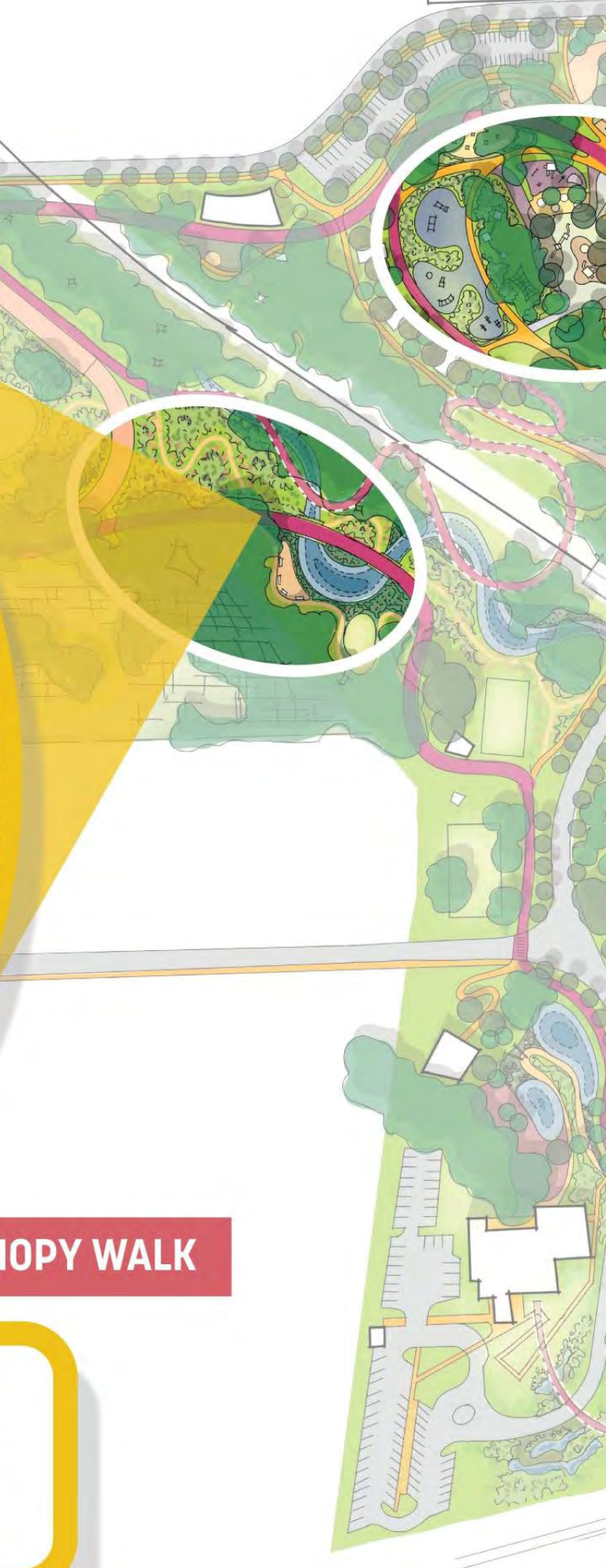
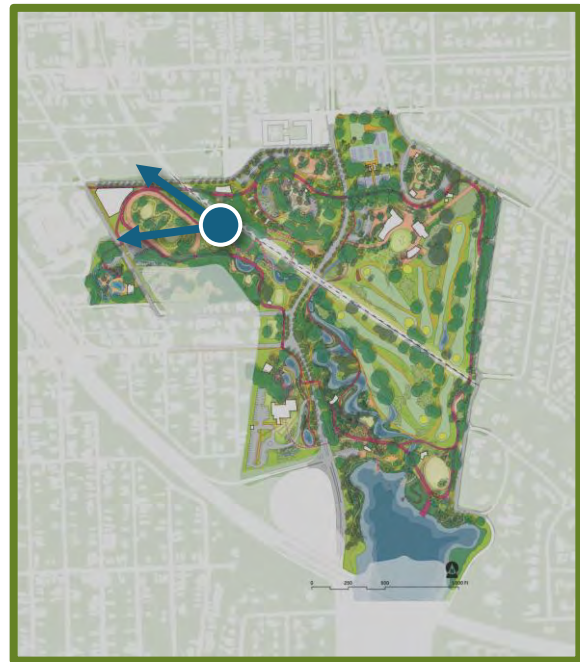
OAK CANOPY WALK

400M PUBLIC TRACK

RECREATION CENTER

OAK CANOPY WALK

The oak canopy walk offers elevated views across the 400-meter track and new recreation center, nestled within the native landscape.



Concept Alternatives
**Concept 2:
The Stitch**



Concept 2: Connectivity

Dalrymple Spine



Emphasize north-south and east west circulation across the park to stitch together the community and provide safe and comfortable use of the park

Concept 2: Connectivity

Dalrymple Spine



Raised Crosswalks

Two-Way Bike Lane

Multi-Modal Path

Basketball Courts

Wetland Terraces

Picnic Lawn

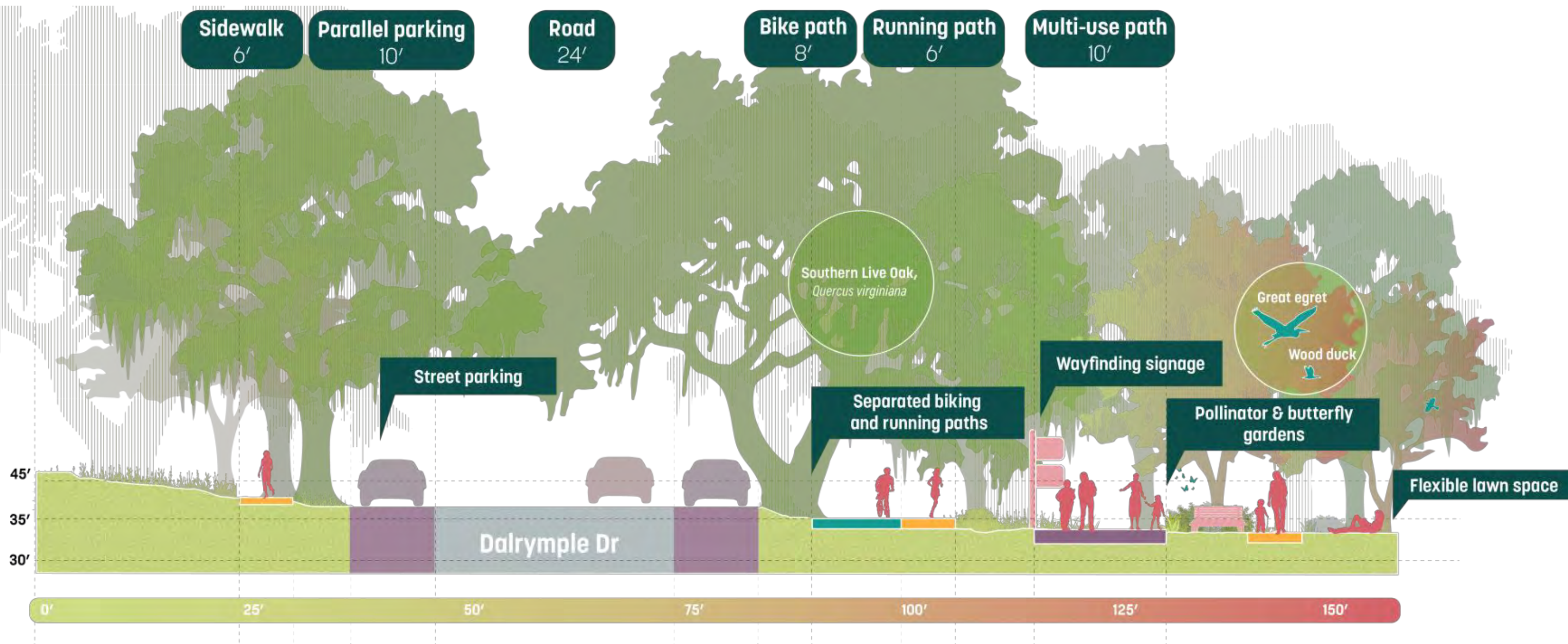
Double Allee Of Trees

Beer Garden

Fishing Pier

Concept 2: Connectivity

Dalrymple Spine



Concept 2: Connectivity

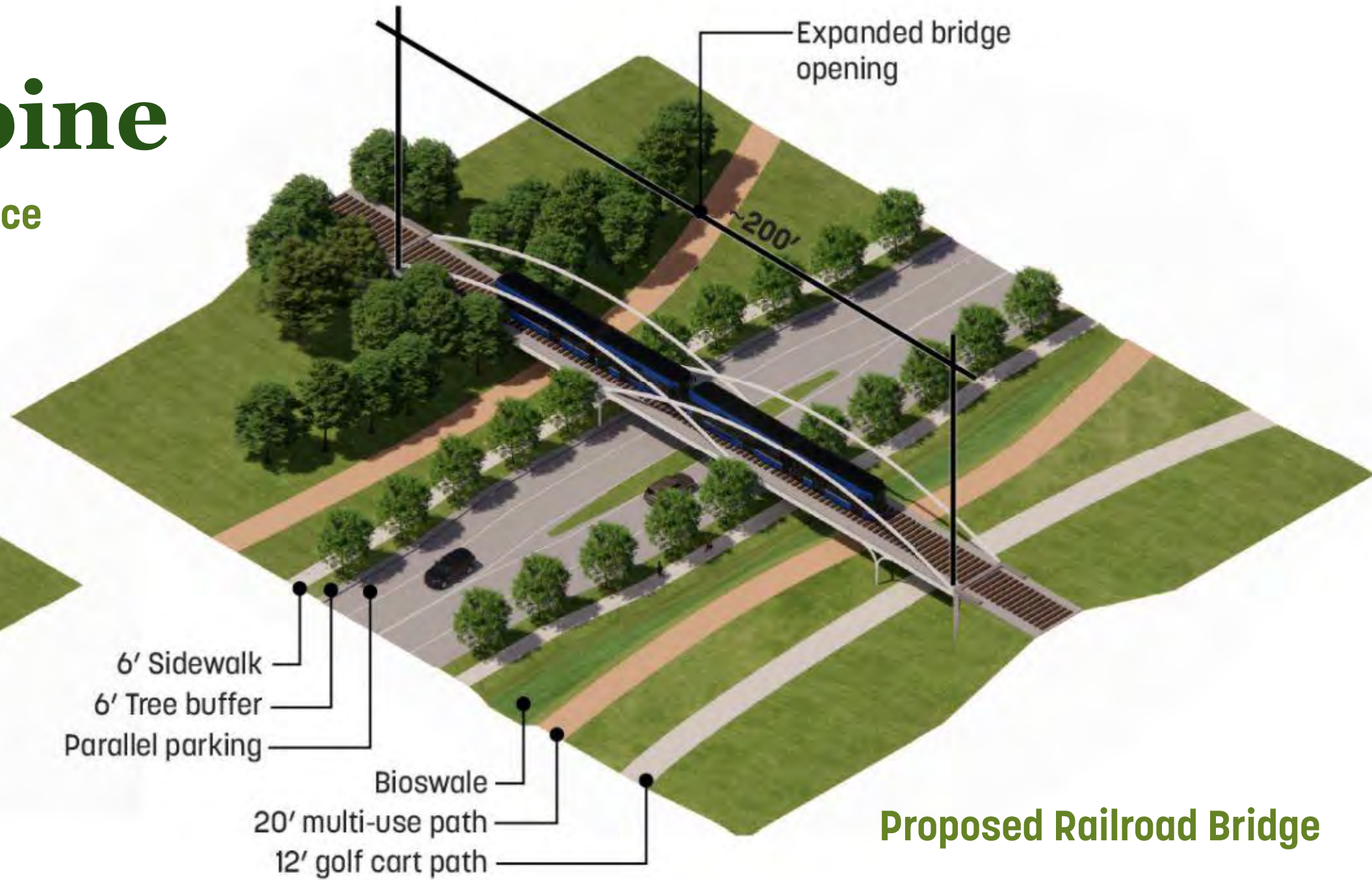
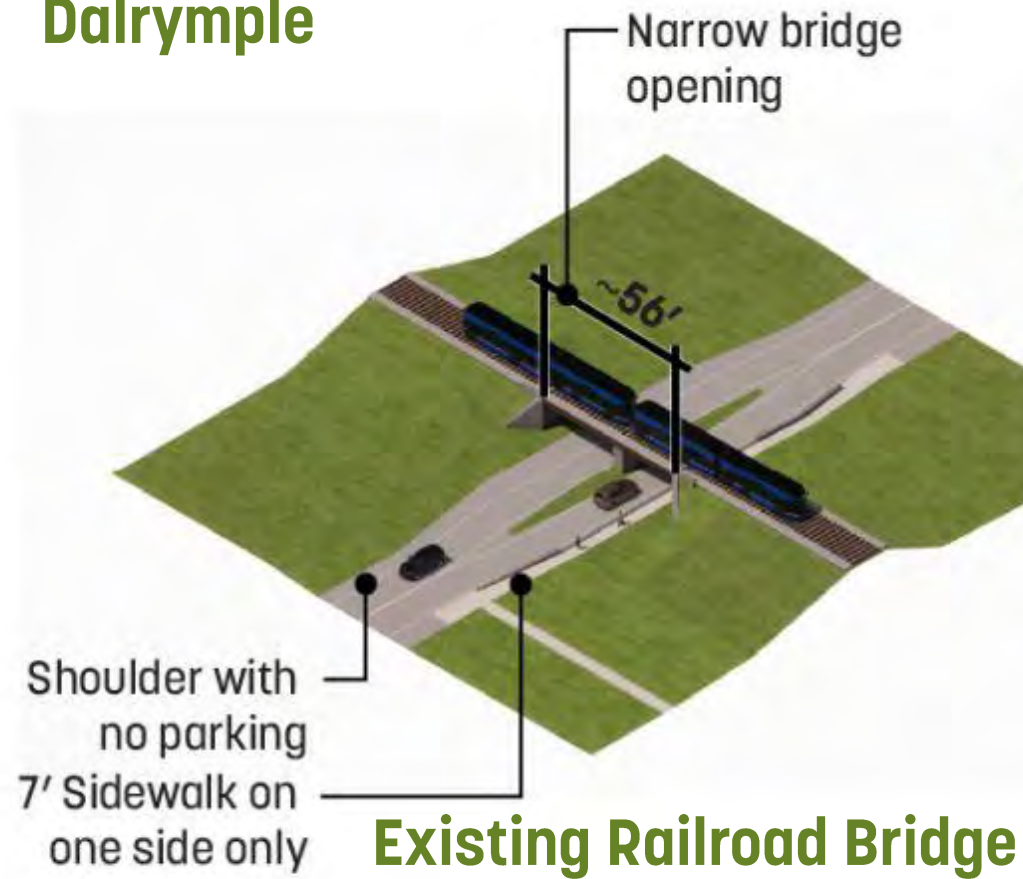
Dalrymple Spine



Concept 2: Connectivity

Dalrymple Spine

Expand the Railroad Bridge to enhance pedestrian & bike connections on Dalrymple



Concept 2: Connectivity

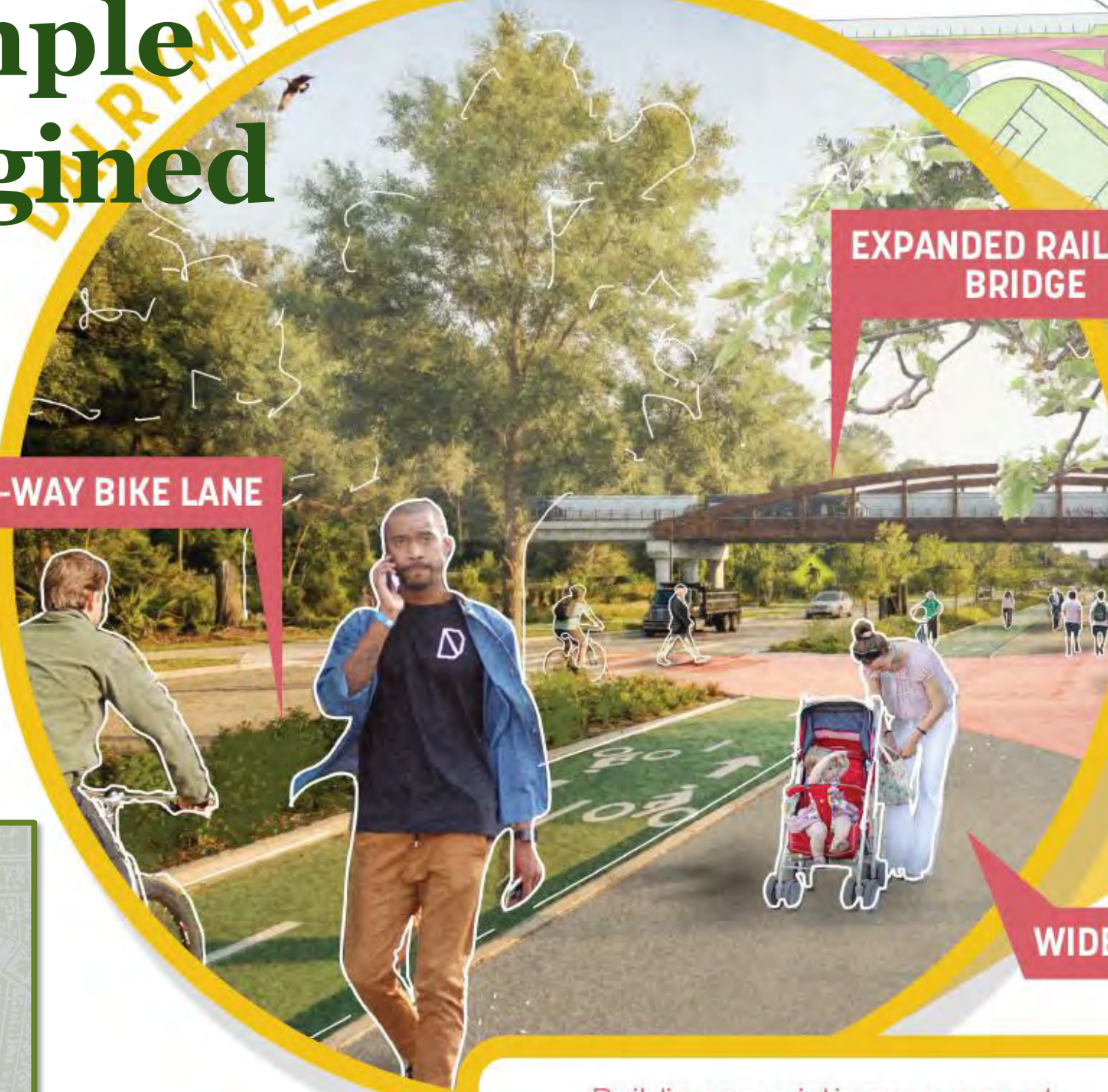
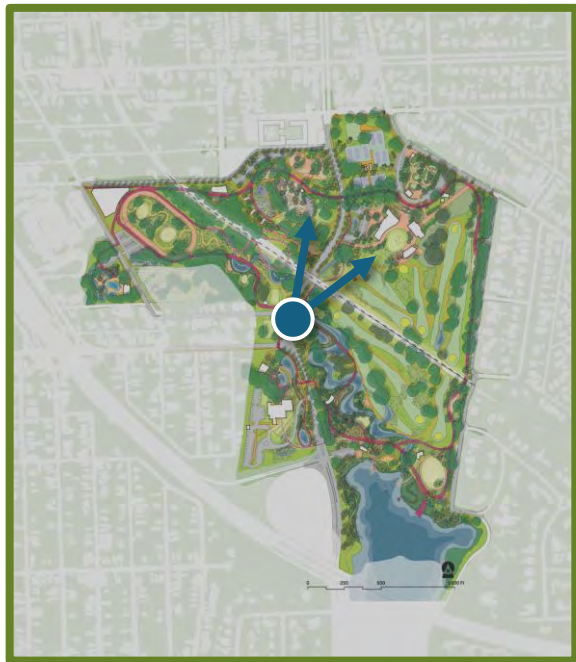
Dalrymple Reimagined

DALRYMPLE REIMAGINED

TWO-WAY BIKE LANE

EXPANDED RAILROAD BRIDGE

WIDENED SIDEWALKS



Building on existing movement patterns, Dalrymple Dr is reimagined as a safer, more walkable park corridor with wide sidewalks, raised crosswalks, and a two-way bike lane.



Concept 2: Ecological Framework

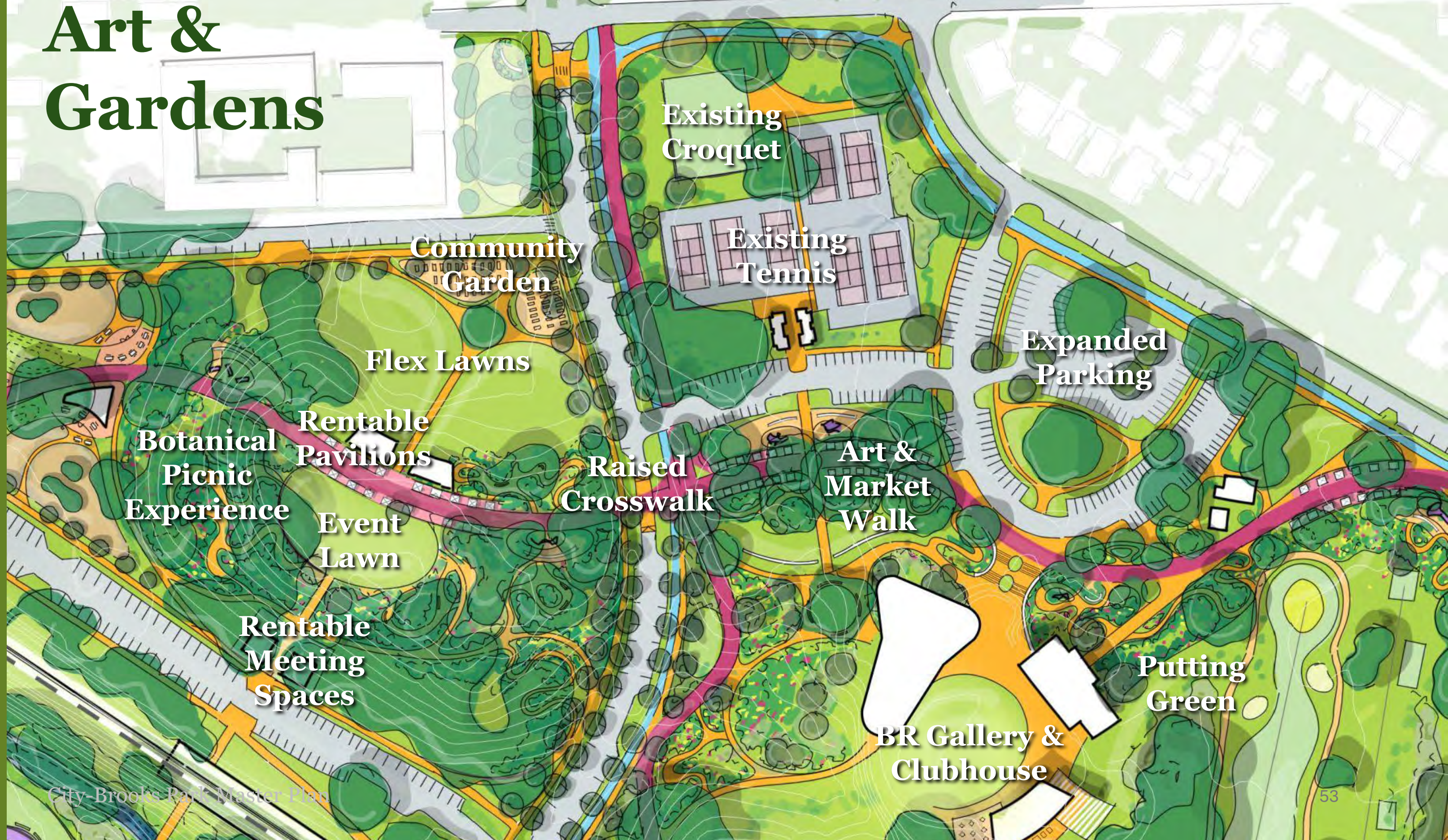
Art & Gardens



Enhance each areas individual landscape character to establish clear zones for experience and habitat

Concept 2: Ecological Framework

Art & Gardens



Existing
Croquet

Existing
Tennis

Community
Garden

Flex Lawns

Expanded
Parking

Botanical
Picnic
Experience

Rentable
Pavilions

Event
Lawn

Raised
Crosswalk

Art &
Market
Walk

Rentable
Meeting
Spaces

Putting
Green

BR Gallery &
Clubhouse

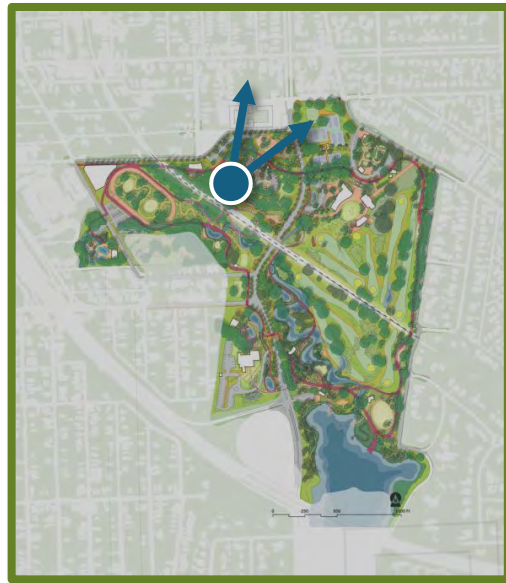
Concept 2: Ecological Framework

Art & Gardens



Concept 2: Ecological Framework

Celebration Hill



EVENT PAVILION

MARKET PROMENADE

FLEXIBLE LAWN

CELEBRATION HILL

Picnic Hill becomes a space for art, markets, open lawn, events, and botanical garden experiences.

Concept 2: Active Recreation

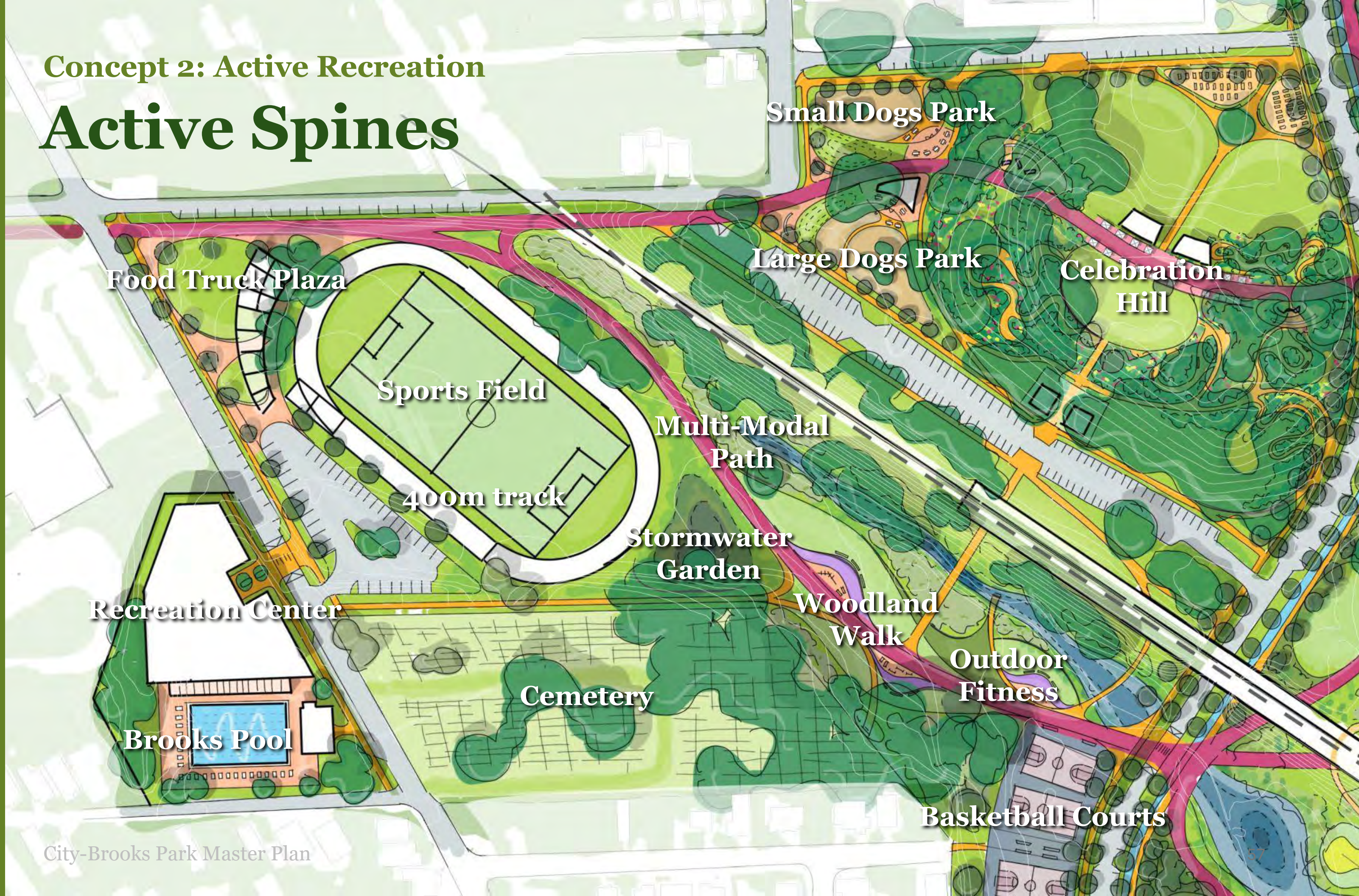
Active Spines



Reorganize recreational program to center along Dalrymple to free up areas for more pastoral landscape

Concept 2: Active Recreation

Active Spines



Food Truck Plaza

Sports Field

400m track

Multi-Modal Path

Stormwater Garden

Recreation Center

Brooks Pool

Cemetery

Woodland Walk

Outdoor Fitness

Small Dogs Park

Large Dogs Park

Celebration Hill

Basketball Courts

Concept 2: Active Recreation

Active Spines



Concept 2: Passive Programs

Continuous Experience

Utilize east-west connectors to provide continuous experience across the park that highlight the unique landscape features of place





Wetland
Terraces

Nature
Play

Expanded Bayou and
Wetland Edge

Shaded Picnic
Lawn

Stormwater Story
Trail

Lakefront Beer
Garden

Adventure
Playground

Fishing Pier

Flexible
Lawn

Lakefront
promenade

Concept 2: Passive Programs

Lakefront Experience

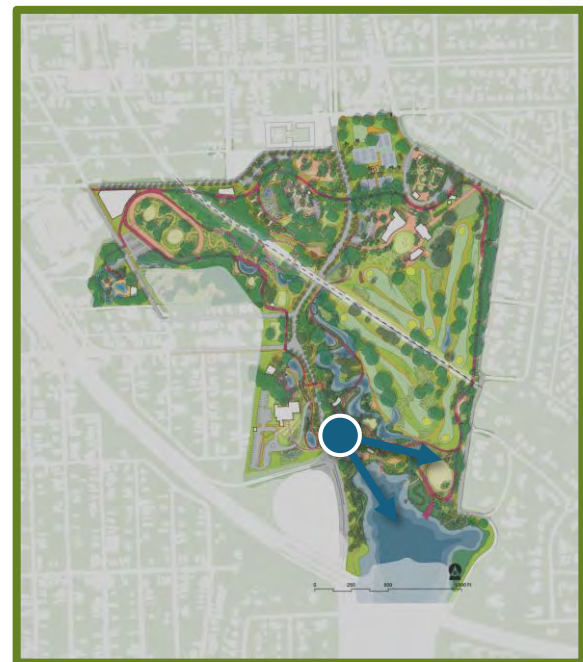
Concept 2: Passive Programs

Lakefront Experience



Concept 2: Passive Programs

Lakefront Experience



LAKEFRONT PROMENADE

CAFE & BEERGARDEN

LAKEFRONT PLAY

The lakefront reimagined as a social hub that connects visitors to the beauty of City Park Lake.



CONCEPT 01: THE BIG LOOP

Connection through the outside - in

*An **activated park loop** unites the site - linking landscapes, lakes, and destinations through a continuous ribbon of movement, play, and activity*



CONCEPT 02: THE STITCH

Connection through the inside - out

*A reimagined **Dalrymple** anchors the park's multimodal network, with generous walking and biking corridors and new east-west green spines that reconnect the landscape across the roadway*

YOUR TURN!

Explore the boards & provide
feedback for the ideas you like!

