

COMMUNITY MEETING



Districts 5 & 6 Community Meeting

Recreation Center Transition Plan
Obsolete Land Study



COMMUNITY MEETING



- 1. IYP3 Overview**
- 2. Recreation Center Transition Plan**
- 3. Obsolete Land Study**
 - Discussion and Q&A
- 4. Wrap-up with Next steps**

IYP3 OVERVIEW



WHY WE DO 10-YEAR PLANS

To serve as a strategic playbook & foundational framework across BREC

1. To define long-term goals, priorities, and guiding principles
2. To shape policies and operational decisions
3. To ensure consistency and accountability
4. To align resources and actions with community needs
5. To steer planning, budgeting, development, and public engagement
6. For National Park & Recreation accreditation (CAPRA)

IYP3 Timeline



Five Guiding Principles



Welcoming Everyone

Goals and Strategies for Equity



Connected People

Goals and Strategies for Sense of Community and Programming



Connected Environment

Goals and Strategies for Environment and Resilience



Connected Places

Goals and Strategies for Connectivity



Moving Forward Sustainably

Goals and Strategies for a Sustainable Portfolio

RECREATION CENTER PLAN 2.0



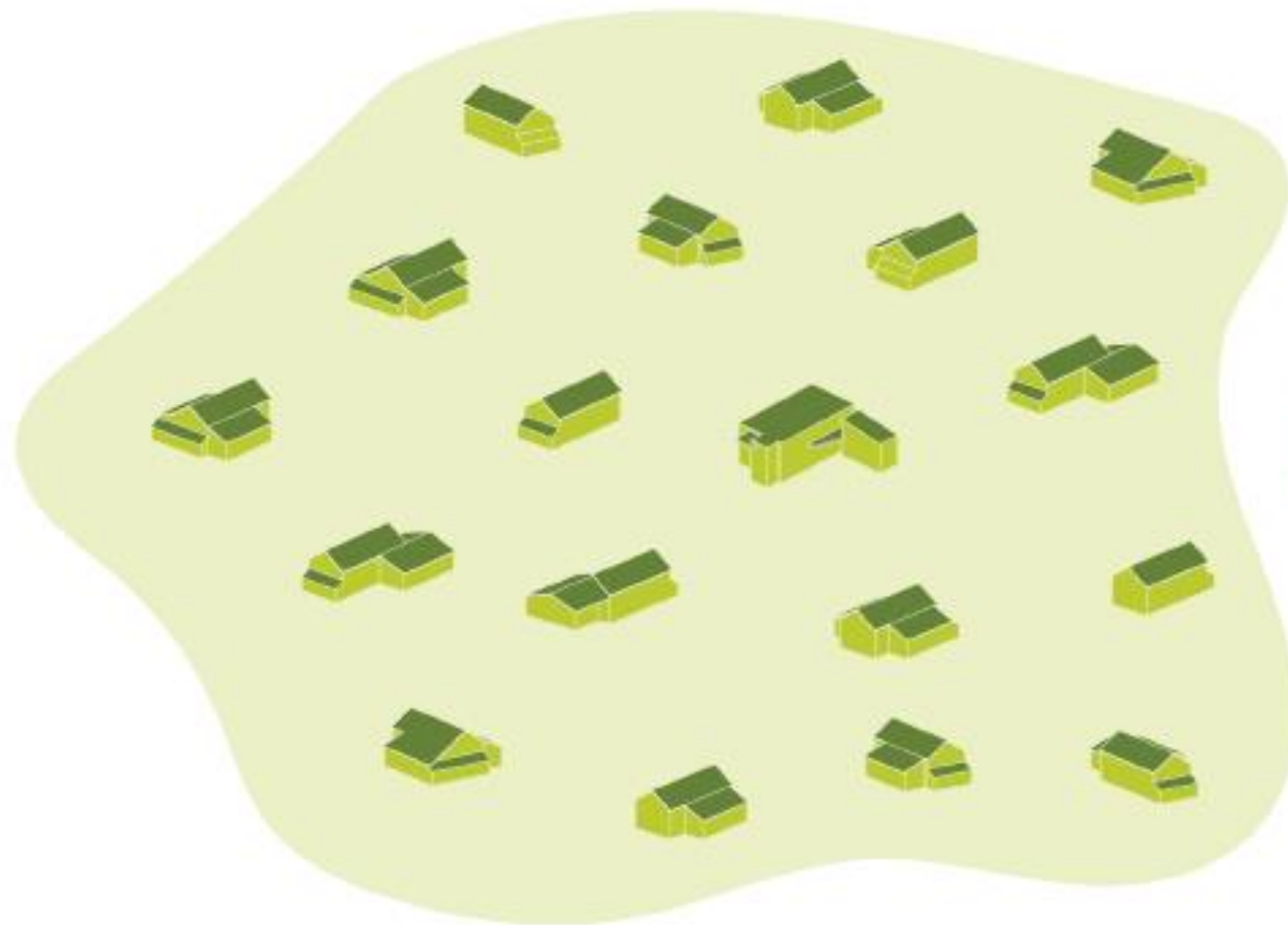
Goals of the plan:

1. Introduce a Tiered Delivery Model
2. Improve Quality and Support Sustainable Staffing & Maintenance
3. All indoor Centers to be Air Conditioned
4. Support Equitable Access
5. Consistent Facility Standards
6. Optimize Use of BREC Resources
7. Identify Redundancies and Adapt into Lower Maintenance Models
8. Address the diverse needs of EBR Communities

RECREATION CENTER PLAN 2.0

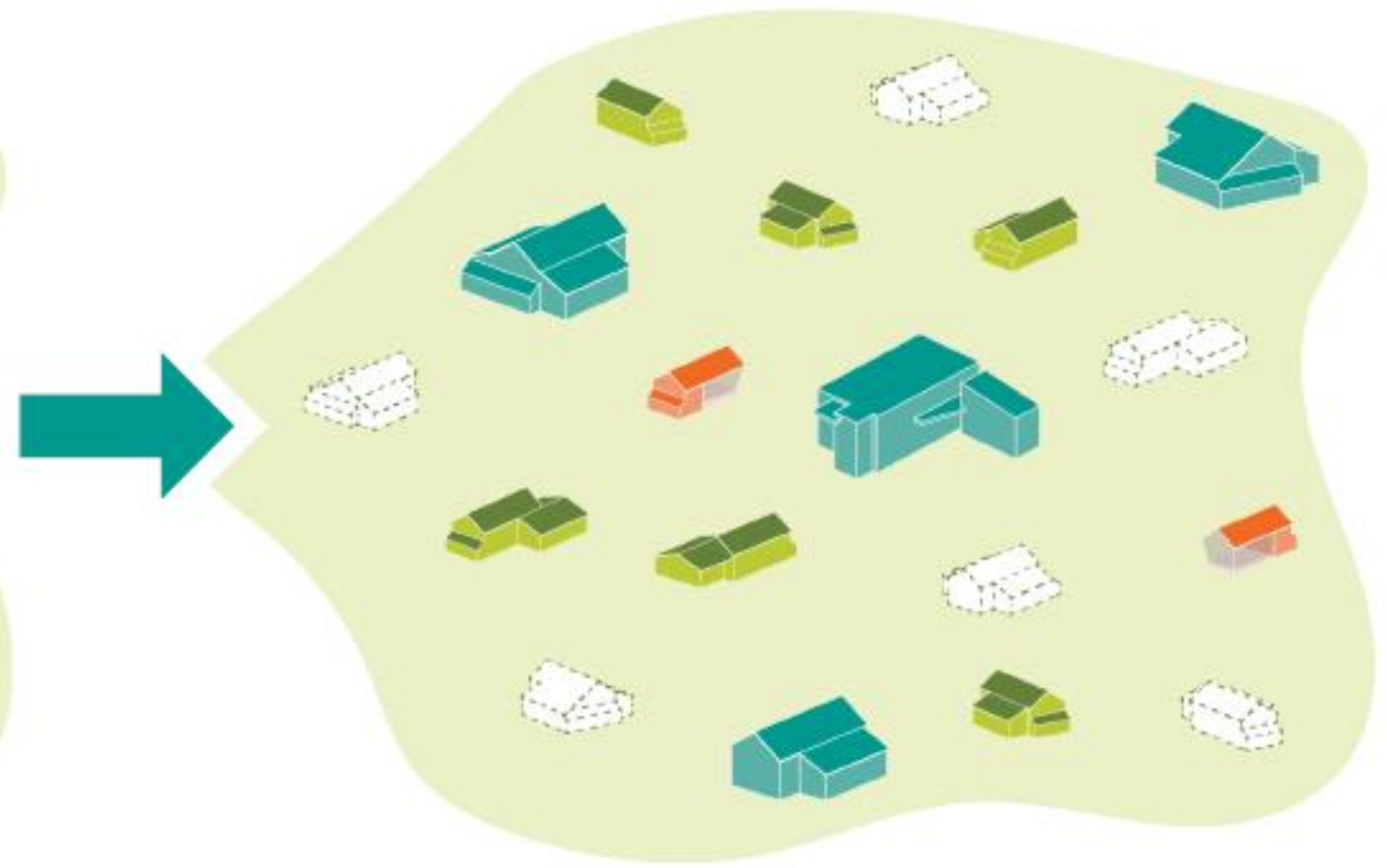


Current Model



BREC's current model includes 56 mostly similar recreation centers, including many that are not meeting community needs and lack air conditioning.

Tiered Model

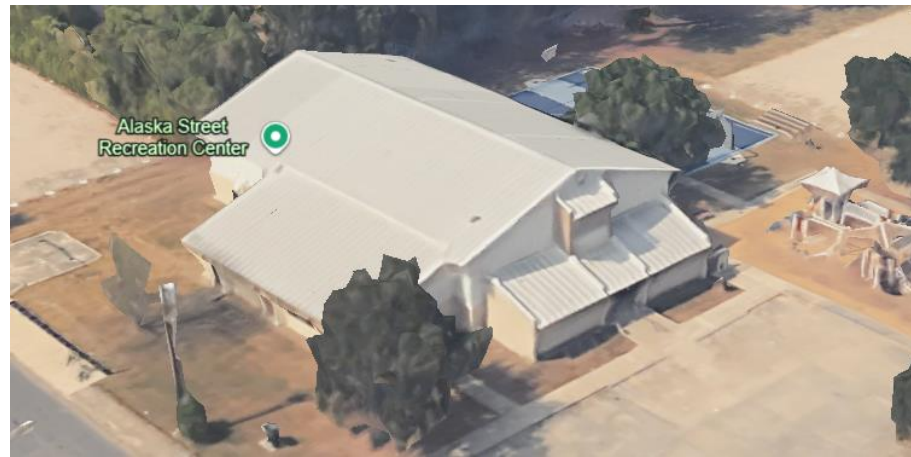


IYP3 recommends transitioning to a tiered model, which introduces multiple scales of recreation centers and prioritizes quality over quantity

RECREATION CENTER PLAN 2.0



Existing Recreation Center Building Types



- Recreation Center A – Community Center & Gym



- Recreation Center B – Gym only



- Community Center C – Community Center Only

Tier 1 Recreation Center Model

Community Program Space + Gym + Indoor Track + Outdoor Covered Courts



Tier 1 Recreation Centers

- Cadillac Street Park
- Monte Sano
- North Sherwood Forest



Tier 1 Interior - Gym



Tier 1 Entry



Tier 1 Outdoor Covered Recreation & Multi-Use Programming

Tier 2 Recreation Center Model

Community Program Space + Outdoor Covered Courts



Tier 2 Recreation Centers

- Milton J. Womack (BREC Admin)
- Cedarcrest Park
- Sharp Road Park
- Tickie Saia Memorial Park
- Maplewood



Samples of New Tier 3 Recreation Center Model

Outdoor Covered and/or Uncovered Courts + New Restrooms



Tier 3 Recreation Centers

- Red Oaks Park
- Longfellow





REC. CENTER TRANSITION NEXT STEPS

1. The transition will be gradual through 2034
2. We will have upfront and early meetings with Stakeholders and each Community to impact the final confirmations of recreation center tiers.
3. We will have an update at the next Community in June 2026 (dates TBD)



OBSOLETE LAND STUDY



- **IYP 3 Guiding Principle #5 “Moving Forward Sustainably”**

1. Goal 22: Sustainable Parks: remove obsolete / redundant facilities and lands

- **Obsolete Land Goal:**

1. To study properties or portions of properties that are not providing sufficient public value to warrant long-term upkeep costs and redirect resources to more efficient use.
2. BREC may deem land obsolete if it is not providing enough public value to warrant long term maintenance and operating costs and to redirect resources to more efficient use.
3. The property considered for disposal will also be measured against the Natural Resource Decision Making Framework found in the Natural Resource Management Plan.
4. Reviewing parks with overlapping services and amenities provide opportunities to merge resources, sell underutilized land, or shift to lower-maintenance designs—saving costs and a sustainable portfolio.
5. The current list of obsolete land features many properties dating back to 2012.
6. **Proceeds From Properties Sold Will Be Reinvested In The Same Service Area.**



PROPERTIES APPRAISED

- The 5 Properties

1. Fortune Addition Park (district 5)
2. Dover Street Park (district 5)
3. Lanier Drive Park (district 5)
4. Blueberry Street Park
5. Alexandar Street Park (district 5)

- Being Studied

1. Samuel D'Agostino Park (district 5)
2. Duchess Drive Park
3. Fairfax Park
4. Sharp Road Park (Out Parcel)

- The Criteria for All 5 Properties

Park Name	City	Metro Council Dist.	Size	Redundant	Small	Non-Contiguous	Innaccessible	Non-Residential Area	Low Public Value	Amount
Fortune Addition Park	Baton Rouge	5	10.18							\$700,000
Dover Street Park	Unincorporated	5	4							\$250,000
Lanier Drive Park	Unincorporated	5	3.2							\$250,000
Blueberry Street Park	Baton Rouge	6	2.18							\$125,000
Alexander Street Park	Baton Rouge	5	8.83							\$550,000



FORTUNE

DOVER



Background:

- Cadillac Street Park is nearby

Recommendation:

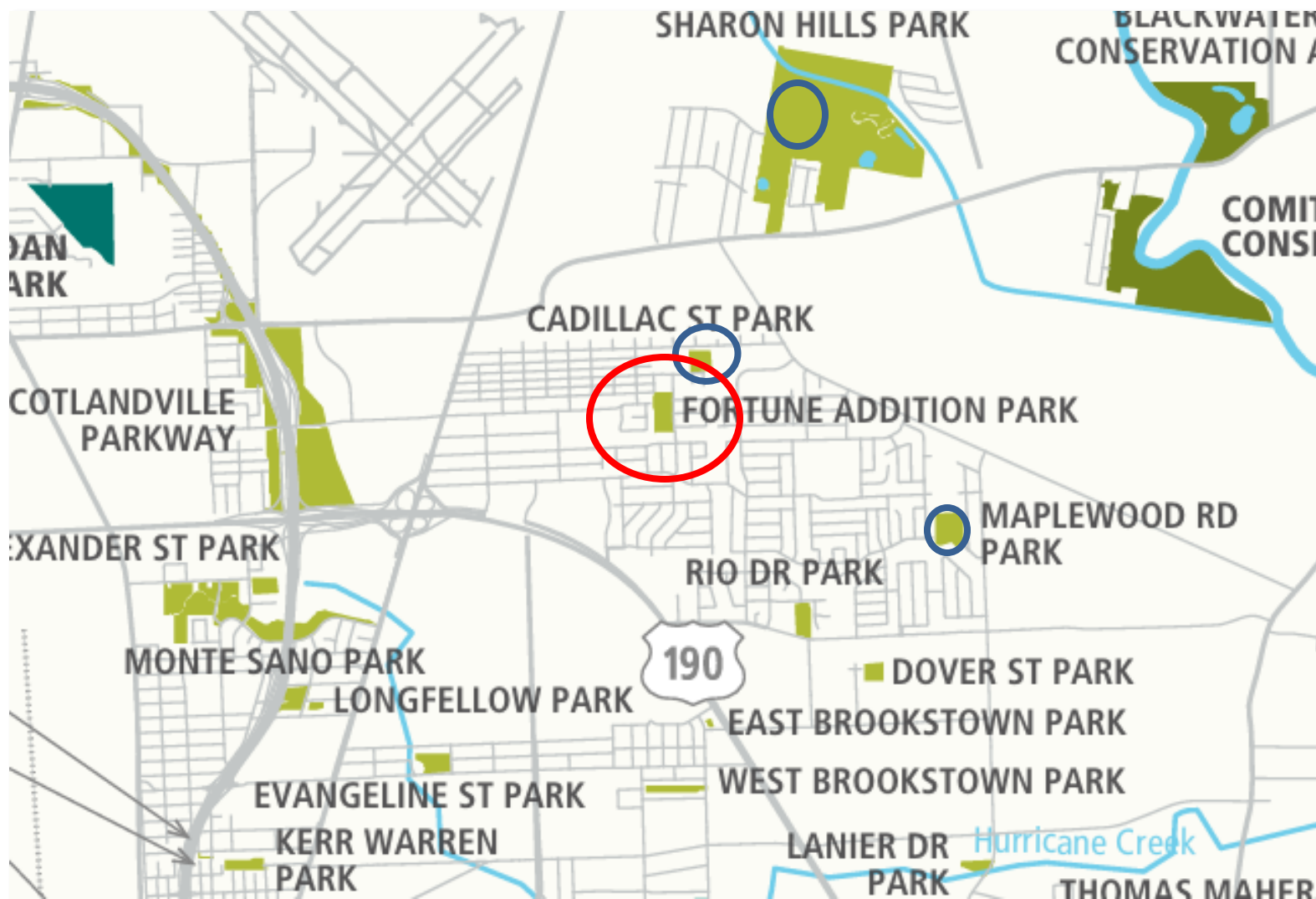
- *Sell 10.18 acres*

Background:

- Close to Rio park with smaller service area

Recommendation:

- *Sell*



ALEXANDER

LANIER



Before 2025, Approved to Sell or Study
Action to Date: Approved to Study 8/20/2012

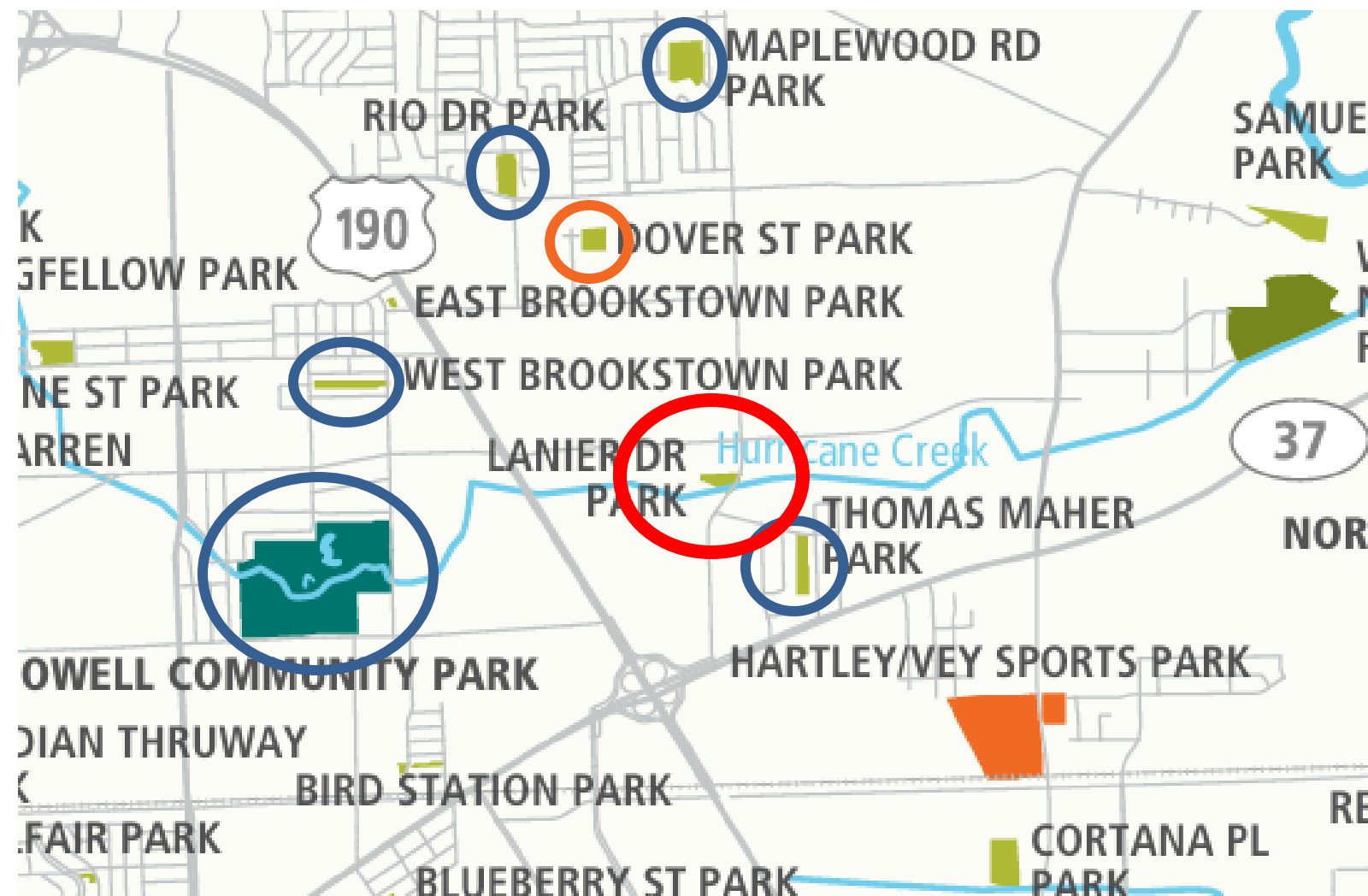


Background:

- There are additional recreational facilities in the area
- Flood Zone: AE / X

Recommendation:

- *Sell 3.24 acres at 3901 Lanier Drive*



BLUEBERRY STREET PARK



Background:

- The CEA Partner Has not been renewed
- New Park Being developed across the street

Recommendation:

- *Sell the property*

Discussion and Q&A

- Discussion
- Q&A

