

# BREC'S IYP3 PARISH-WIDE STRATEGIC PLAN [THE GUIDE]

*2025-2028*



*APRIL 23, 2026*



# PLAY. DISCOVER. GROW.



April 23, 2026

Dear Commissioners and Mayors,

As we move forward with IYP3 priorities, staff continues to meet to discuss and make recommendations for projects, top partnerships, stakeholder engagement, obsolete land and more. Based upon P&E department restructuring efforts & other factors, some project schedules have been adjusted on pages 3-11. The Rec. Center Transition Plan and Obsolete land sections Have both been updated and reformatted to reflect recent progress.

This booklet includes updates through the end of 2028. On the following pages you will find:

- [Page 3](#): Current Projects Actively Under Construction
- [Pages 4-7](#): Phase 1-4: Current Projects Actively in Design
- [Pages 8-11](#): Phase 0: Current Projects Not Yet Started
- [Page 12-24](#): Recreation Center Transition Plan
- [Pages 25-31](#): Obsolete Land Study - Reformatted
- [Appendices](#):
  - Appendix A: Large Construction Project Financial Status
  - Appendix B: Natural Resource Management Update
  - Appendix C: IYP3 Key Focus Areas
  - Appendix D: IYP3 Goals & Recommendations

We respectfully appreciate your review of this information and look forward to your valuable insights as we shape our path forward.

Sincerely,

*Janet C. Simmons*  
Janet Simmons  
Interim Superintendent, BREC



# CURRENT PROJECTS ACTIVELY UNDER CONSTRUCTION

1st 3-Year Strategic Plan within IYP3: 2026 - 2028 (2025 Transition Year)

## PROJECT PHASE KEY

|                |  |
|----------------|--|
| <b>Phase 0</b> | <b>Project need identified and included in current 3-Year Strategic Plan</b> |
| <b>Phase 1</b> | <b>Concept Master Planning or Contracting</b>                                |
| <b>Phase 2</b> | <b>Programming and Schematic Design</b>                                      |
| <b>Phase 3</b> | <b>Design Development</b>  |
| <b>Phase 4</b> | <b>Construction Drawing for Bidding</b>                                      |
| <b>Phase 5</b> | <b>Bidding</b>   |
| <b>Phase 6</b> | <b>Approval</b>  |
| <b>Phase 7</b> | <b>Contracts</b>   |
| <b>Phase 8</b> | <b>In-Construction</b>   |
| <b>Phase 9</b> | <b>Substantially Complete</b>  |

| City | Project Need & Description  | PROJECT                        | Current Phase            | MOU          | CEA          | Grant        | Outside Funding | Capital Outlay | Stakeholder Meeting | Community Meeting | Estimated Project Start Date* | Estimated Project End Date* | Estimated 2026-2028 Design & Construction Cost | IYP3 PRIORITY | 2023                         |    |    |    | 2024 |    |    |    | 2025 |    |    |    | 2026 |    |    |    | 2027 |    |    |    |  |  |  |  |  |  |  |  |
|------|---|--------------------------------|--------------------------|--------------|--------------|--------------|-----------------|----------------|---------------------|-------------------|-------------------------------|-----------------------------|--|---------------|------------------------------|----|----|----|------|----|----|----|------|----|----|----|------|----|----|----|------|----|----|----|--|--|--|--|--|--|--|--|
|      |   |                                |                          |              |              |              |                 |                |                     |                   |                               |                             |  |               | Q1                           | Q2 | Q3 | Q4 | Q1   | Q2 | Q3 | Q4 | Q1   | Q2 | Q3 | Q4 | Q1   | Q2 | Q3 | Q4 | Q1   | Q2 | Q3 | Q4 |  |  |  |  |  |  |  |  |
| 206  | Continued new park sign implementation throughout the Parish with consideration for new branding for each City area.  | Multi-Park - Park Signage Ph 2 | 8-Construction           | Not Required | Not Required | Not Required | Not Required    | Not Required   | Not Required        | Not Required      | 10/16/23                      | 12/28/26                    | \$1,000,000                                    |               | Multi-Park - Park Signage    |    |    |    |      |    |    |    |      |    |    |    |      |    |    |    |      |    |    |    |  |  |  |  |  |  |  |  |
| 207  |   | Design                         |                          |              |              |              |                 |                |                     |                   | 10/16/23                      | 05/22/25                    |  |               | Design                       |    |    |    |      |    |    |    |      |    |    |    |      |    |    |    |      |    |    |    |  |  |  |  |  |  |  |  |
| 208  |   | Construction                   |                          |              |              |              |                 |                |                     |                   | 05/23/25                      | 12/28/26                    |  |               | Construction                 |    |    |    |      |    |    |    |      |    |    |    |      |    |    |    |      |    |    |    |  |  |  |  |  |  |  |  |
| 209  | BR CMAQ Trail Construction - Freedom Heritage Trail from Scotlandville to Downtown  | Freedom Heritage Trail         | 9-Substantially Complete | Not Required | Completed    | Completed    | Not Required    | Not Required   | Not Required        | Not Required      | 10/01/24                      | 02/12/26                    | \$5,899,700                                    |               | Freedom Heritage Trail       |    |    |    |      |    |    |    |      |    |    |    |      |    |    |    |      |    |    |    |  |  |  |  |  |  |  |  |
| 210  |   | Construction                   |                          |              |              |              |                 |                |                     |                   | 10/01/24                      | 02/12/26                    |  |               | Construction                 |    |    |    |      |    |    |    |      |    |    |    |      |    |    |    |      |    |    |    |  |  |  |  |  |  |  |  |
| 211  | St. G Tennis Construction: Seven courts in structural disrepair are being replaced with post-tension slabs, upgraded lighting, surfacing, fencing, and amenities to support tournament play at this high-traffic tennis center. | Highland Tennis Improvements   | 9-Substantially Complete | Not Required | Not Required | Completed    | Not Required    | Not Required   | Completed           | Not Required      | 12/16/24                      | 10/06/25                    | \$1,417,000                                    | 61            | Highland Tennis Improvements |    |    |    |      |    |    |    |      |    |    |    |      |    |    |    |      |    |    |    |  |  |  |  |  |  |  |  |
| 212  |   | Construction                   |                          |              |              |              |                 |                |                     |                   | 12/16/24                      | 10/06/25                    |  |               | Construction                 |    |    |    |      |    |    |    |      |    |    |    |      |    |    |    |      |    |    |    |  |  |  |  |  |  |  |  |
| 213  | Un Greenwood Park Intersection Improvements Hwy 19 @ Kate Mayer : Dangerous intersection with high accident rates. Needed for efficient ingress and Egress on Hwy 19 - Construction Federally funded through DOTD               | Greenwood Hwy 19 Intersection  | 8-Construction           | Not Required | Completed    | Not Required | Completed       | Not Required   | Not Required        | Not Required      | 12/31/24                      | 01/29/27                    | \$180,000                                      |               | Greenwood Hwy 19             |    |    |    |      |    |    |    |      |    |    |    |      |    |    |    |      |    |    |    |  |  |  |  |  |  |  |  |
| 214  |   | Design                         |                          |              |              |              |                 |                |                     |                   | 12/31/24                      | 02/03/26                    |  |               | Design                       |    |    |    |      |    |    |    |      |    |    |    |      |    |    |    |      |    |    |    |  |  |  |  |  |  |  |  |
| 215  |   | Construction                   |                          |              |              |              |                 |                |                     |                   | 02/04/26                      | 01/29/27                    |  |               | Construction                 |    |    |    |      |    |    |    |      |    |    |    |      |    |    |    |      |    |    |    |  |  |  |  |  |  |  |  |
| 216  | Un Priority Site Improvements Needs from IYP3 - new large gathering pavilion, firepit, BBQ grills, connection walks, playground addition  | Pride Park Site Improvements   | 8-Construction           | Not Required | Not Required | Not Required | Not Required    | Not Required   | Completed           | Completed         | 01/27/25                      | 06/30/26                    | \$600,000                                      | 2             | Pride Park Site Improvements |    |    |    |      |    |    |    |      |    |    |    |      |    |    |    |      |    |    |    |  |  |  |  |  |  |  |  |
| 217  |   | Construction                   |                          |              |              |              |                 |                |                     |                   | 01/27/25                      | 06/30/26                    |  |               | Construction                 |    |    |    |      |    |    |    |      |    |    |    |      |    |    |    |      |    |    |    |  |  |  |  |  |  |  |  |
| 218  | Un CEA with EBR School Board: A precedent-setting partnership creating a new public park as the shared site for a K-5 school. New park will combine Meadow and Gentry parks into one large park.                                | School-in-the-Park Project     | 7-Contracts              | Not Required | Next Steps   | Not Required | Next Steps      | Not Required   | Required            | Not Required      | 03/18/25                      | 07/05/27                    | \$2,000,000                                    | 4             | School-in-                   |    |    |    |      |    |    |    |      |    |    |    |      |    |    |    |      |    |    |    |  |  |  |  |  |  |  |  |
| 219  |   | Design                         |                          |              |              |              |                 |                |                     |                   | 03/18/25                      | 12/12/25                    |  |               | Design                       |    |    |    |      |    |    |    |      |    |    |    |      |    |    |    |      |    |    |    |  |  |  |  |  |  |  |  |
| 220  |   | Construction                   |                          |              |              |              |                 |                |                     |                   | 01/12/26                      | 07/05/27                    |  |               | Constructi                   |    |    |    |      |    |    |    |      |    |    |    |      |    |    |    |      |    |    |    |  |  |  |  |  |  |  |  |
| 221  | Un Priority Site Improvements Needs from IYP3 - new playground, pavilion, community garden planters, connection walks   | Alsen Park Site Improvements   | 8-Construction           | Not Required | Not Required | Not Required | Not Required    | Not Required   | Completed           | Completed         | 05/08/25                      | 04/15/26                    | \$436,000                                      | 1             | Alsen Park Site Improvements |    |    |    |      |    |    |    |      |    |    |    |      |    |    |    |      |    |    |    |  |  |  |  |  |  |  |  |
| 222  |   | Construction                   |                          |              |              |              |                 |                |                     |                   | 05/08/25                      | 04/15/26                    |  |               | Construction                 |    |    |    |      |    |    |    |      |    |    |    |      |    |    |    |      |    |    |    |  |  |  |  |  |  |  |  |
| 223  | Un Beaver Creek Culvert Repair Design: Deferred maintenance for improved drainage and reduced erosion.  | Beaver Creek Culvert Repair    | 9-Substantially Complete | Not Required | Not Required | Not Required | Not Required    | Not Required   | Completed           | Not Required      | 06/09/25                      | 06/13/26                    | \$381,500                                      | 16            | Beaver Creek Culvert Repair  |    |    |    |      |    |    |    |      |    |    |    |      |    |    |    |      |    |    |    |  |  |  |  |  |  |  |  |
| 224  |   | Design                         |                          |              |              |              |                 |                |                     |                   | 06/09/25                      | 11/15/25                    |  |               | Design                       |    |    |    |      |    |    |    |      |    |    |    |      |    |    |    |      |    |    |    |  |  |  |  |  |  |  |  |
| 225  |   | Construction                   |                          |              |              |              |                 |                |                     |                   | 01/15/26                      | 06/13/26                    |  |               | Construction                 |    |    |    |      |    |    |    |      |    |    |    |      |    |    |    |      |    |    |    |  |  |  |  |  |  |  |  |
| 226  | Un Expand and dredge the lake to reduce flood risk and enhance recreation. Cypress Bayou will be recontoured and widened to support green infrastructure, hiking, and paddling. Funded by the Louisiana Watershed Initiative    | Greenwood LWI Cypress Bayou    | 8-Construction           | Not Required | Not Required | Completed    | Not Required    | Not Required   | Completed           | Not Required      | 07/18/25                      | 10/10/26                    | \$8,861,700                                    |               | Greenwood LWI Cypress Ba     |    |    |    |      |    |    |    |      |    |    |    |      |    |    |    |      |    |    |    |  |  |  |  |  |  |  |  |
| 227  |   | Construction                   |                          |              |              |              |                 |                |                     |                   | 07/18/25                      | 10/10/26                    |  |               | Construction                 |    |    |    |      |    |    |    |      |    |    |    |      |    |    |    |      |    |    |    |  |  |  |  |  |  |  |  |
| 228  | Zachary Installation of ball field lighting   | 39th St Field Lighting         | 8-Construction           | Not Required | Not Required | Not Required | Not Required    | Not Required   | Not Required        | Not Required      | 11/15/25                      | 04/01/26                    |  |               | 39th St Field Lighting       |    |    |    |      |    |    |    |      |    |    |    |      |    |    |    |      |    |    |    |  |  |  |  |  |  |  |  |
| 229  |   | Construction                   |                          |              |              |              |                 |                |                     |                   | 11/15/25                      | 04/01/26                    |  |               | Construction                 |    |    |    |      |    |    |    |      |    |    |    |      |    |    |    |      |    |    |    |  |  |  |  |  |  |  |  |
| 230  | ATJ, Lovett, & Howell - Paving Project: Operational need and deferred maintenance   | Multi Park Paving              | 9-Substantially Complete | Not Required | Not Required | Not Required | Not Required    | Not Required   | Completed           | Not Required      | 12/02/25                      | 07/29/26                    | \$844,750                                      | 192           | Multi Park Paving            |    |    |    |      |    |    |    |      |    |    |    |      |    |    |    |      |    |    |    |  |  |  |  |  |  |  |  |
| 231  |   | Construction                   |                          |              |              |              |                 |                |                     |                   | 12/02/25                      | 07/29/26                    |  |               | Construction                 |    |    |    |      |    |    |    |      |    |    |    |      |    |    |    |      |    |    |    |  |  |  |  |  |  |  |  |
| 232  | St. G Ph 2 Tennis Construction: 13 courts to receive new surfacing, fencing, and amenities to support tournament play at this high-traffic tennis center.   | Highland Tennis Ph2            | 7-Contracts              | Not Required | Not Required | Next Steps   | Not Required    | Not Required   | Completed           | Not Required      | 12/15/25                      | 08/09/26                    | \$0  | 61            | Highland Tennis Ph2          |    |    |    |      |    |    |    |      |    |    |    |      |    |    |    |      |    |    |    |  |  |  |  |  |  |  |  |
| 233  |   | Design                         |                          |              |              |              |                 |                |                     |                   | 12/15/25                      | 02/10/26                    |  |               | Design                       |    |    |    |      |    |    |    |      |    |    |    |      |    |    |    |      |    |    |    |  |  |  |  |  |  |  |  |
| 234  |   | Construction                   |                          |              |              |              |                 |                |                     |                   | 02/11/26                      | 08/09/26                    |  |               | Construction                 |    |    |    |      |    |    |    |      |    |    |    |      |    |    |    |      |    |    |    |  |  |  |  |  |  |  |  |
| 235  | BR Removal of residential structures on corner lot. Existing house does not fulfill need or mission of the Magnolia Mound Historic Site   | Mag Mound 1960's House Demo    | 7-Contracts              | Not Required | Not Required | Not Required | Not Required    | Not Required   | Required            | Not Required      | 01/31/26                      | 07/09/26                    | \$98,100                                       |               | Mag Mound 1960's House Demo  |    |    |    |      |    |    |    |      |    |    |    |      |    |    |    |      |    |    |    |  |  |  |  |  |  |  |  |
| 236  |   | Design                         |                          |              |              |              |                 |                |                     |                   | 01/31/26                      | 03/11/26                    |  |               | Design                       |    |    |    |      |    |    |    |      |    |    |    |      |    |    |    |      |    |    |    |  |  |  |  |  |  |  |  |
| 237  |   | Construction                   |                          |              |              |              |                 |                |                     |                   | 03/12/26                      | 07/09/26                    |  |               | Construction                 |    |    |    |      |    |    |    |      |    |    |    |      |    |    |    |      |    |    |    |  |  |  |  |  |  |  |  |

# PHASE 1-4: CURRENT PROJECTS ACTIVELY IN DESIGN

## 1st 3-Year Strategic Plan within IYP3: 2026 - 2028 (2025 Transition Year)

| City | Project Need & Description | PROJECT   | Current Phase                  | MOU        | CEA          | Grant        | Outside Funding | Capital Outlay | Stakeholder Meeting | Community Meeting | Estimated Project Start Date* | Estimated Project End Date* | Estimated 2026-2028 Design & Construction Cost | IYP3 PRIORITY | 2024 |    |    |    | 2025 |    |    |    | 2026 |    |    |    | 2027 |    |    |    |  |  |  |  |  |
|------|----------------------------|---|--------------------------------|------------|--------------|--------------|-----------------|----------------|---------------------|-------------------|-------------------------------|-----------------------------|--|---------------|------|----|----|----|------|----|----|----|------|----|----|----|------|----|----|----|--|--|--|--|--|
|      |                            |   |                                |            |              |              |                 |                |                     |                   |                               |                             |  |               | Q1   | Q2 | Q3 | Q4 | Q1   | Q2 | Q3 | Q4 | Q1   | Q2 | Q3 | Q4 | Q1   | Q2 | Q3 | Q4 |  |  |  |  |  |
| 76   | BR                         | Health Loop (HL) Essen Lane to OLOL Design - Major segment needed to fill in gaps of Health Loop Greenway Along Ward Creek  | HL-Essen to OLOL               | 4-Drawings | Not Required | Next Steps   | Completed       | Not Required   | Not Required        | Required          | Not Required                  | 12/30/24                    | 11/04/27                                       | \$6,758,000   | 137  |    |    |    |      |    |    |    |      |    |    |    |      |    |    |    |  |  |  |  |  |
| 77   |                            |   | Design                         |            |              |              |                 |                |                     |                   | 12/30/24                      | 01/08/27                    |  |               |      |    |    |    |      |    |    |    |      |    |    |    |      |    |    |    |  |  |  |  |  |
| 78   |                            |   | Construction                   |            |              |              |                 |                |                     |                   | 01/09/27                      | 11/04/27                    |  |               |      |    |    |    |      |    |    |    |      |    |    |    |      |    |    |    |  |  |  |  |  |
| 79   | BR                         | Health Loop (HL) High Grove to Mall of LA Design - Major segment needed to fill in gaps of Health Loop Greenway Along Dawson Creek  | HL-High Grove to Mall: Ph. 1   | 4-Drawings | Not Required | Next Steps   | Completed       | Not Required   | Not Required        | Required          | Not Required                  | 12/30/24                    | 04/28/27                                       | \$3,270,000   | 98   |    |    |    |      |    |    |    |      |    |    |    |      |    |    |    |  |  |  |  |  |
| 80   |                            |   | Design                         |            |              |              |                 |                |                     |                   | 12/30/24                      | 07/02/26                    |  |               |      |    |    |    |      |    |    |    |      |    |    |    |      |    |    |    |  |  |  |  |  |
| 81   |                            |   | Construction                   |            |              |              |                 |                |                     |                   | 07/03/26                      | 04/28/27                    |  |               |      |    |    |    |      |    |    |    |      |    |    |    |      |    |    |    |  |  |  |  |  |
| 82   | BR                         | Health Loop (HL) High Grove to Mall of LA Design - Major segment needed to fill in gaps of Health Loop Greenway Along Dawson Creek  | HL-High Grove to Mall: Ph 2    | 4-Drawings | Not Required | Next Steps   | Completed       | Not Required   | Not Required        | Required          | Not Required                  | 12/30/24                    | 04/28/27                                       | \$3,270,000   | 98   |    |    |    |      |    |    |    |      |    |    |    |      |    |    |    |  |  |  |  |  |
| 83   |                            |   | Design                         |            |              |              |                 |                |                     |                   | 12/30/24                      | 07/02/26                    |  |               |      |    |    |    |      |    |    |    |      |    |    |    |      |    |    |    |  |  |  |  |  |
| 84   |                            |   | Construction                   |            |              |              |                 |                |                     |                   | 07/03/26                      | 04/28/27                    |  |               |      |    |    |    |      |    |    |    |      |    |    |    |      |    |    |    |  |  |  |  |  |
| 85   | BR                         | Health Loop (HL) Perkins to Paulat Design - Major segment needed to fill in gaps of Health Loop Greenway Along Dawson Creek   | HL-Perkins to Paulat           | 4-Drawings | Not Required | Next Steps   | Completed       | Not Required   | Not Required        | Required          | Not Required                  | 12/30/24                    | 06/27/27                                       | \$3,815,000   |      |    |    |    |      |    |    |    |      |    |    |    |      |    |    |    |  |  |  |  |  |
| 86   |                            |   | Design                         |            |              |              |                 |                |                     |                   | 12/30/24                      | 08/31/26                    |  |               |      |    |    |    |      |    |    |    |      |    |    |    |      |    |    |    |  |  |  |  |  |
| 87   |                            |   | Construction                   |            |              |              |                 |                |                     |                   | 09/01/26                      | 06/27/27                    |  |               |      |    |    |    |      |    |    |    |      |    |    |    |      |    |    |    |  |  |  |  |  |
| 88   | BR                         | (CEA with City-Parish for them to construct) On street bike lane and sidewalks connecting Memorial Stadium to Downtown and Freedom Heritage Trail                             | Memorial to Spanish Town Park  | 4-Drawings | Not Required | Next Steps   | Required        | Not Required   | Not Required        | Required          | Not Required                  | 01/31/25                    | 05/30/27                                       | \$1,308,000   |      |    |    |    |      |    |    |    |      |    |    |    |      |    |    |    |  |  |  |  |  |
| 89   |                            |   | Design                         |            |              |              |                 |                |                     |                   | 01/31/25                      | 09/22/26                    |  |               |      |    |    |    |      |    |    |    |      |    |    |    |      |    |    |    |  |  |  |  |  |
| 90   |                            |   | Construction                   |            |              |              |                 |                |                     |                   | 09/23/26                      | 05/30/27                    |  |               |      |    |    |    |      |    |    |    |      |    |    |    |      |    |    |    |  |  |  |  |  |
| 91   | BR                         | CEA with BR Housing Authority for new modern housing development. Park will be a town square type. And provide new amenities for service area - Federal funded by HUD         | Ardendale Park                 | 4-Drawings | Completed    | Next Steps   | Not Required    | Not Required   | Not Required        | Completed         | Completed                     | 02/06/25                    | 03/01/27                                       | \$0           |      |    |    |    |      |    |    |    |      |    |    |    |      |    |    |    |  |  |  |  |  |
| 92   |                            | By BREC   | Design                         |            |              |              |                 |                |                     |                   | 02/06/25                      | 04/01/26                    |  |               |      |    |    |    |      |    |    |    |      |    |    |    |      |    |    |    |  |  |  |  |  |
| 93   |                            | EBRPHA CMAR   | Construction                   |            |              |              |                 |                |                     |                   | 04/02/26                      | 03/01/27                    |  |               |      |    |    |    |      |    |    |    |      |    |    |    |      |    |    |    |  |  |  |  |  |
| 94   | BR                         | Federal HMGP Grant for 40,000sf Recreation Center, Command Center during times of emergencies.  | Memorial Safe Room Rec Center  | 4-Drawings | Not Required | Completed    | Completed       | Not Required   | Not Required        | Required          | Not Required                  | 02/17/25                    | 10/14/27                                       | \$19,620,000  | 12   |    |    |    |      |    |    |    |      |    |    |    |      |    |    |    |  |  |  |  |  |
| 95   |                            |   | Design                         |            |              |              |                 |                |                     |                   | 02/17/25                      | 10/24/25                    |  |               |      |    |    |    |      |    |    |    |      |    |    |    |      |    |    |    |  |  |  |  |  |
| 96   |                            |   | FEMA review                    |            |              |              |                 |                |                     |                   | 10/25/25                      | 10/19/26                    |  |               |      |    |    |    |      |    |    |    |      |    |    |    |      |    |    |    |  |  |  |  |  |
| 97   |                            |   | Construction                   |            |              |              |                 |                |                     |                   | 10/20/26                      | 10/14/27                    |  |               |      |    |    |    |      |    |    |    |      |    |    |    |      |    |    |    |  |  |  |  |  |
| 98   | St. G                      | Federal HMGP Grant for 35,000sf Recreation Center, Command Center during times of emergencies.  | Airline Safe Room Rec Center   | 4-Drawings | Not Required | Completed    | Completed       | Not Required   | Not Required        | Required          | Not Required                  | 02/17/25                    | 10/14/27                                       | \$19,620,000  | 12   |    |    |    |      |    |    |    |      |    |    |    |      |    |    |    |  |  |  |  |  |
| 99   |                            |   | Design                         |            |              |              |                 |                |                     |                   | 02/17/25                      | 10/24/25                    |  |               |      |    |    |    |      |    |    |    |      |    |    |    |      |    |    |    |  |  |  |  |  |
| 100  |                            |   | FEMA review                    |            |              |              |                 |                |                     |                   | 10/25/25                      | 10/19/26                    |  |               |      |    |    |    |      |    |    |    |      |    |    |    |      |    |    |    |  |  |  |  |  |
| 101  |                            |   | Construction                   |            |              |              |                 |                |                     |                   | 10/20/26                      | 10/14/27                    |  |               |      |    |    |    |      |    |    |    |      |    |    |    |      |    |    |    |  |  |  |  |  |
| 102  | Un                         | Greenwood Entry Road Extension: As part of the Master Plan, a new access point from Lavey Lane will improve traffic flow and support future zoo and park development.         | Greenwood Entry Rd Ext Lavey   | 4-Drawings | Not Required | Not Required | Not Required    | Not Required   | Not Required        | Required          | Not Required                  | 04/08/25                    | 06/26/27                                       | \$4,360,000   |      |    |    |    |      |    |    |    |      |    |    |    |      |    |    |    |  |  |  |  |  |
| 103  |                            |   | Design                         |            |              |              |                 |                |                     |                   | 04/08/25                      | 07/01/26                    |  |               |      |    |    |    |      |    |    |    |      |    |    |    |      |    |    |    |  |  |  |  |  |
| 104  |                            |   | Construction                   |            |              |              |                 |                |                     |                   | 07/02/26                      | 06/26/27                    |  |               |      |    |    |    |      |    |    |    |      |    |    |    |      |    |    |    |  |  |  |  |  |
| 105  | BR                         | Site Improvements Phase 1 Design: Priority Improvements Needs from IYP3. Playground and other amenities at end of life cycle  | Anna T. Jordan Playground      | 4-Drawings | Not Required | Not Required | Not Required    | Not Required   | Not Required        | Completed         | Completed                     | 04/21/25                    | 08/10/27                                       | \$2,180,000   |      |    |    |    |      |    |    |    |      |    |    |    |      |    |    |    |  |  |  |  |  |
| 106  |                            |   | Design                         |            |              |              |                 |                |                     |                   | 04/21/25                      | 06/16/26                    |  |               |      |    |    |    |      |    |    |    |      |    |    |    |      |    |    |    |  |  |  |  |  |
| 107  |                            |   | Construction                   |            |              |              |                 |                |                     |                   | 06/17/26                      | 08/10/27                    |  |               |      |    |    |    |      |    |    |    |      |    |    |    |      |    |    |    |  |  |  |  |  |
| 108  | Un                         | A new, state-of-the-art Animal Ambassador building to meet AZA accreditation concern, Elevate Guest experiences and Animal welfare and support vital educational programming. | Zoo Ambassador Animal Building | 3-Design   | Not Required | Not Required | Not Required    | Required       | Not Required        | Required          | Not Required                  | 04/23/25                    | 12/05/27                                       | \$4,142,000   |      |    |    |    |      |    |    |    |      |    |    |    |      |    |    |    |  |  |  |  |  |
| 109  |                            |   | Design                         |            |              |              |                 |                |                     |                   | 04/23/25                      | 10/31/26                    |  |               |      |    |    |    |      |    |    |    |      |    |    |    |      |    |    |    |  |  |  |  |  |
| 110  |                            |   | Construction                   |            |              |              |                 |                |                     |                   | 11/01/26                      | 12/05/27                    |  |               |      |    |    |    |      |    |    |    |      |    |    |    |      |    |    |    |  |  |  |  |  |



# PHASE 1-4: CURRENT PROJECTS ACTIVELY IN DESIGN

## 1st 3-Year Strategic Plan within IYP3: 2026 - 2028 (2025 Transition Year)

| City | Project Need & Description  | PROJECT   | Current Phase | MOU          | CEA          | Grant        | Outside Funding | Capital Outlay | Stakeholder Meeting | Community Meeting | Estimated Project Start Date <sup>1</sup> | Estimated Project End Date <sup>2</sup> | Estimated 2026-2028 Design & Construction Cost | IYP3 PRIORITY | 2025  |    |    |    | 2026 |    |    |    | 2027 |    |    |    | 2028 |    |    |    |
|------|---|---|---------------|--------------|--------------|--------------|-----------------|----------------|---------------------|-------------------|---|---|--|---------------|---|----|----|----|------|----|----|----|------|----|----|----|------|----|----|----|
|      |   |   |               |              |              |              |                 |                |                     |                   |   |   |  |               | Q1  | Q2 | Q3 | Q4 | Q1   | Q2 | Q3 | Q4 | Q1   | Q2 | Q3 | Q4 | Q1   | Q2 | Q3 | Q4 |
| 150  | Remove bridge & replace w/large culvert for access to ball field side of park for heavy vehicles.   | Antioch Bridge Replacement                            | 2-Program/SD  | Not Required | Not Required | Not Required | Not Required    | Not Required   | Required            | Not Required      | 11/03/25                                  | 03/28/27                                | \$278,800                                      |               | Antioch Bridge Replacement                            |    |    |    |      |    |    |    |      |    |    |    |      |    |    |    |
| 151  |   | Design  |               |              |              |              |                 |                |                     |                   | 11/03/25                                  | 07/31/26                                |  |               | Design  |    |    |    |      |    |    |    |      |    |    |    |      |    |    |    |
| 152  |   | Construction  |               |              |              |              |                 |                |                     |                   | 08/01/26                                  | 03/28/27                                |  |               | Construction  |    |    |    |      |    |    |    |      |    |    |    |      |    |    |    |
| 153  | Improvements to stadium restrooms, locker rooms, concession stands, ticket booths and utility infrastructure.   | Olympia Facilities Renovation                         | 3-Design      | Not Required | Not Required | Not Required | Not Required    | Not Required   | Required            | Not Required      | 11/03/25                                  | 05/08/27                                | \$1,090,000                                    |               | Olympia Facilities Renovation                         |    |    |    |      |    |    |    |      |    |    |    |      |    |    |    |
| 154  |   | Design  |               |              |              |              |                 |                |                     |                   | 11/03/25                                  | 09/30/26                                |  |               | Design  |    |    |    |      |    |    |    |      |    |    |    |      |    |    |    |
| 155  |   | Construction  |               |              |              |              |                 |                |                     |                   | 19/01/26                                  | 05/08/27                                |  |               | Construction  |    |    |    |      |    |    |    |      |    |    |    |      |    |    |    |
| 156  | Three project tasks include the Lake Conservancy Study, Wampold Park Design, City-Brooks Community Park Master Plan. The master plan will focus on synergy with the University Lakes Project, a new Contemporary Arts Center, Historic Golf Course, KKCM, and the Brooks side creating a safe, cohesive, and flagship park. | City Brooks New Master Plan & Lakes Conservancy Study | 1-Master Plan | Not Required | Next Steps   | Not Required | Required        | Not Required   | Next Steps          | Required          | 12/01/25                                  | 07/15/26                                | \$375,000                                      | 84            | City Brooks New Master Plan & Lakes Conservancy Study |    |    |    |      |    |    |    |      |    |    |    |      |    |    |    |
| 157  |   | Lakes Conservancy Study                               |               |              |              |              |                 |                |                     |                   | 12/01/25                                  | 03/30/26                                |  |               | Lakes Conservancy Study                               |    |    |    |      |    |    |    |      |    |    |    |      |    |    |    |
| 158  |   | Wampold Park Design                                   |               |              |              |              |                 |                |                     |                   | 12/01/25                                  | 03/30/26                                |  |               | Wampold Park Design                                   |    |    |    |      |    |    |    |      |    |    |    |      |    |    |    |
| 159  |   | City-Brooks New Master Plan                           |               |              |              |              |                 |                |                     |                   | 12/01/25                                  | 07/15/26                                |  |               | City-Brooks New Master Plan                           |    |    |    |      |    |    |    |      |    |    |    |      |    |    |    |
| 160  | New Ball Field Complex and Site Improvements including parking, two synthetic turf fields and two practice fields.  | Baker Park Ball Field Improv                          | 1-Master Plan | Not Required | Next Steps   | Not Required | Not Required    | Submitted      | Required            | Not Required      | 12/04/25                                  | 08/09/27                                | \$4,687,000                                    | 37            | Baker Park Ball Field Improv                          |    |    |    |      |    |    |    |      |    |    |    |      |    |    |    |
| 161  |   | Design  |               |              |              |              |                 |                |                     |                   | 12/04/25                                  | 01/01/27                                |  |               | Design  |    |    |    |      |    |    |    |      |    |    |    |      |    |    |    |
| 162  |   | Construction  |               |              |              |              |                 |                |                     |                   | 01/02/27                                  | 08/09/27                                |  |               | Construction  |    |    |    |      |    |    |    |      |    |    |    |      |    |    |    |
| 163  | Renovation of the historic 100-year-old clubhouse and golf pro shop to unlock revenue potential. Plans include converting the first floor & basement into a park welcome center and community gathering space.  | City Brooks Clubhouse Reno                            | 1-Contracting | Not Required | Next Steps   | Not Required | Required        | Not Required   | Required            | Required          | 12/05/25                                  | 05/10/28                                | \$4,360,000                                    |               | City Brooks C   |    |    |    |      |    |    |    |      |    |    |    |      |    |    |    |
| 164  |   | Design  |               |              |              |              |                 |                |                     |                   | 12/05/25                                  | 02/21/27                                |  |               | Design  |    |    |    |      |    |    |    |      |    |    |    |      |    |    |    |
| 165  |   | Construction  |               |              |              |              |                 |                |                     |                   | 02/22/27                                  | 05/10/28                                |  |               | Construction  |    |    |    |      |    |    |    |      |    |    |    |      |    |    |    |
| 166  | Aquatic Pumps Liberty Lagoon  | Aquatic Pumps Def Maint                               | 3-Design      | Not Required | Not Required | Not Required | Not Required    | Not Required   | Required            | Not Required      | 12/15/25                                  | 03/14/27                                | \$545,000                                      |               | Aquatic Pumps Def Maint                               |    |    |    |      |    |    |    |      |    |    |    |      |    |    |    |
| 167  |   | Design  |               |              |              |              |                 |                |                     |                   | 12/15/25                                  | 09/15/26                                |  |               | Design  |    |    |    |      |    |    |    |      |    |    |    |      |    |    |    |
| 168  |   | Construction  |               |              |              |              |                 |                |                     |                   | 09/16/26                                  | 03/14/27                                |  |               | Construction  |    |    |    |      |    |    |    |      |    |    |    |      |    |    |    |
| 169  | Historic roof replacement required  | Mag Mnd Historic House Roof                           | 1-Contracting | Not Required | Not Required | Not Required | Required        | Not Required   | Required            | Not Required      | 01/06/26                                  | 12/31/26                                | \$654,000                                      |               | Mag Mnd Historic House Roof                           |    |    |    |      |    |    |    |      |    |    |    |      |    |    |    |
| 170  |   | Design  |               |              |              |              |                 |                |                     |                   | 01/06/26                                  | 07/04/26                                |  |               | Design  |    |    |    |      |    |    |    |      |    |    |    |      |    |    |    |
| 171  |   | Construction  |               |              |              |              |                 |                |                     |                   | 07/05/26                                  | 12/31/26                                |  |               | Construction  |    |    |    |      |    |    |    |      |    |    |    |      |    |    |    |
| 172  | Project identified in IYP2 - Centrally located signature, universal Playground. One of a kind and Iconic Destination Playground   | Indy Universal Playground                             | 3-Design      | Not Required | Not Required | Next Steps   | Required        | Not Required   | Required            | Required          | 01/12/26                                  | 02/04/28                                | \$1,362,500                                    |               | Indy Universal Playg                                  |    |    |    |      |    |    |    |      |    |    |    |      |    |    |    |
| 173  |   | Design  |               |              |              |              |                 |                |                     |                   | 01/12/26                                  | 12/31/26                                |  |               | Design  |    |    |    |      |    |    |    |      |    |    |    |      |    |    |    |
| 174  |   | Construction  |               |              |              |              |                 |                |                     |                   | 01/01/27                                  | 02/04/28                                |  |               | Construction  |    |    |    |      |    |    |    |      |    |    |    |      |    |    |    |
| 175  | Replacement of pedestrian entry bridge crossing Cypress Bayou to construct heavy vehicle access to southern sections of zoo property.   | Zoo Service Bridge Def Mant                           | 1-Contracting | Not Required | Not Required | Not Required | Not Required    | Not Required   | Required            | Not Required      | 01/15/26                                  | 02/18/27                                | \$654,000                                      |               | Zoo Service Bridge Def Mant                           |    |    |    |      |    |    |    |      |    |    |    |      |    |    |    |
| 176  |   | Design  |               |              |              |              |                 |                |                     |                   | 01/15/26                                  | 08/02/26                                |  |               | Design  |    |    |    |      |    |    |    |      |    |    |    |      |    |    |    |
| 177  |   | Construction  |               |              |              |              |                 |                |                     |                   | 08/03/26                                  | 02/18/27                                |  |               | Construction  |    |    |    |      |    |    |    |      |    |    |    |      |    |    |    |
| 178  | Phase 1 Improvements, West side of Parkway, Design and Construction.  | Scotlandville Greenway Trail Phase-1                  | 1-Contracting | Not Required | Not Required | Not Required | Not Required    | Not Required   | Required            | Not Required      | 02/01/26                                  | 09/03/27                                | \$2,943,000                                    | 39            | Scotlandville Greenway Trail P                        |    |    |    |      |    |    |    |      |    |    |    |      |    |    |    |
| 179  |   | Design  |               |              |              |              |                 |                |                     |                   | 02/01/26                                  | 11/07/26                                |  |               | Design  |    |    |    |      |    |    |    |      |    |    |    |      |    |    |    |
| 180  |   | Construction  |               |              |              |              |                 |                |                     |                   | 11/08/26                                  | 09/03/27                                |  |               | Construction  |    |    |    |      |    |    |    |      |    |    |    |      |    |    |    |
| 181  | Golf Maintenance Building & Drainage & grading for efficient use of facility and improvement to golf course & cart path drainage.   | Webb Maint Building & Drainage                        | 1-Master Plan | Not Required | Not Required | Not Required | Not Required    | Not Required   | Required            | Not Required      | 02/16/26                                  | 09/08/27                                | \$436,000                                      | 68            | Webb Maint Building & Drainage                        |    |    |    |      |    |    |    |      |    |    |    |      |    |    |    |
| 182  |   | Design  |               |              |              |              |                 |                |                     |                   | 02/16/26                                  | 01/01/27                                |  |               | Design  |    |    |    |      |    |    |    |      |    |    |    |      |    |    |    |
| 183  |   | Construction  |               |              |              |              |                 |                |                     |                   | 01/02/27                                  | 09/08/27                                |  |               | Construction  |    |    |    |      |    |    |    |      |    |    |    |      |    |    |    |
| 184  | Repair and replacements to unique systems and materials in this high-end building will preserve its original architectural design while introducing sustainable, low-maintenance components for improved efficiency and affordability.  | Mag Mnd Visitor Center Repairs                        | 1-Contracting | Not Required | Not Required | Not Required | Required        | Not Required   | Required            | Not Required      | 02/23/26                                  | 12/30/27                                | \$981,000                                      | 73            | Mag Mnd Visitor Cente                                 |    |    |    |      |    |    |    |      |    |    |    |      |    |    |    |
| 185  |   | Design  |               |              |              |              |                 |                |                     |                   | 02/23/26                                  | 11/30/26                                |  |               | Design  |    |    |    |      |    |    |    |      |    |    |    |      |    |    |    |
| 186  |   | Construction  |               |              |              |              |                 |                |                     |                   | 12/01/26                                  | 12/30/27                                |  |               | Construction  |    |    |    |      |    |    |    |      |    |    |    |      |    |    |    |



# PHASE 0: CURRENT PROJECTS NOT YET STARTED

## 1st 3-Year Strategic Plan within IYP3: 2026 - 2028 (2025 Transition Year)

| City | Project Need & Description   | PROJECT   | Current Phase                    | MOU             | CEA          | Grant        | Outside Funding | Capital Outlay | Stakeholder Meeting | Community Meeting | Estimated Project Start Date¹ | Estimated Project End Date* | Estimated 2026-2028 Design & Construction Cost | IYP3 PRIORITY | 2026                               |                       |    |    | 2027         |    |    |    | 2028 |    |    |    | 2029 |    |    |    |  |
|------|--|---|----------------------------------|-----------------|--------------|--------------|-----------------|----------------|---------------------|-------------------|-------------------------------|-----------------------------|--|---------------|------------------------------------|-----------------------|----|----|--------------|----|----|----|------|----|----|----|------|----|----|----|--|
|      |  |   |                                  |                 |              |              |                 |                |                     |                   |                               |                             |  |               | Q1                                 | Q2                    | Q3 | Q4 | Q1           | Q2 | Q3 | Q4 | Q1   | Q2 | Q3 | Q4 | Q1   | Q2 | Q3 | Q4 |  |
| 1    | Part of IYP3, the Recreation Transition Plan - Design and Construct Two New Tier 1 (Gym with A/C) Recreations Centers.           | 2026-28 Tier 1 Recreation Center A  | 0-In Discussion                  | Not Required    | Not Required | Not Required | Not Required    | Not Required   | Next Steps          | Required          | 06/01/26                      | 05/30/28                    | \$10,900,000                                   |               | 2026-28 Tier 1 Recreation Center A |                       |    |    |              |    |    |    |      |    |    |    |      |    |    |    |  |
| 2    |  | Design  |                                  |                 |              |              |                 |                |                     |                   | 06/01/26                      | 05/31/27                    |  |               | Design                             |                       |    |    |              |    |    |    |      |    |    |    |      |    |    |    |  |
| 3    |  | Construction  |                                  |                 |              |              |                 |                |                     |                   | 06/01/27                      | 05/30/28                    |  |               |                                    |                       |    |    | Construction |    |    |    |      |    |    |    |      |    |    |    |  |
| 4    | Part of IYP3, the Recreation Transition Plan - Design and Construct Two New Tier 1 (Gym with A/C) Recreations Centers.           | 2026-28 Tier 1 Recreation Center B  | 0-In Discussion                  | Not Required    | Not Required | Not Required | Not Required    | Not Required   | Next Steps          | Required          | 06/01/26                      | 05/30/28                    | \$10,900,000                                   |               | 2026-28 Tier 1 Recreation Center B |                       |    |    |              |    |    |    |      |    |    |    |      |    |    |    |  |
| 5    |  | Design  |                                  |                 |              |              |                 |                |                     |                   | 06/01/26                      | 05/31/27                    |  |               | Design                             |                       |    |    |              |    |    |    |      |    |    |    |      |    |    |    |  |
| 6    |  | Construction  |                                  |                 |              |              |                 |                |                     |                   | 06/01/27                      | 05/30/28                    |  |               |                                    |                       |    |    | Construction |    |    |    |      |    |    |    |      |    |    |    |  |
| 7    | Part of IYP3, the Recreation Transition Plan - Design and Construct two Tier 2 (Community Program Space) Recreation Centers.     | 2026-28 Tier 2 Recreation Center A  | 0-In Discussion                  | Not Required    | Not Required | Not Required | Not Required    | Not Required   | Next Steps          | Required          | 06/01/26                      | 05/30/28                    | \$6,540,000                                    |               | 2026-28 Tier 2 Recreation Center A |                       |    |    |              |    |    |    |      |    |    |    |      |    |    |    |  |
| 8    |  | Design  |                                  |                 |              |              |                 |                |                     |                   | 06/01/26                      | 05/31/27                    |  |               | Design                             |                       |    |    |              |    |    |    |      |    |    |    |      |    |    |    |  |
| 9    |  | Construction  |                                  |                 |              |              |                 |                |                     |                   | 06/01/27                      | 05/30/28                    |  |               |                                    |                       |    |    | Construction |    |    |    |      |    |    |    |      |    |    |    |  |
| 10   | Part of IYP3, the Recreation Transition Plan - Design and Construct two Tier 2 (Community Program Space) Recreation Centers.     | 2026-28 Tier 2 Recreation Center B  | 0-In Discussion                  | Not Required    | Not Required | Not Required | Not Required    | Not Required   | Next Steps          | Required          | 06/01/26                      | 05/30/28                    | \$6,540,000                                    |               | 2026-28 Tier 2 Recreation Center B |                       |    |    |              |    |    |    |      |    |    |    |      |    |    |    |  |
| 11   |  | Design  |                                  |                 |              |              |                 |                |                     |                   | 06/01/26                      | 05/31/27                    |  |               | Design                             |                       |    |    |              |    |    |    |      |    |    |    |      |    |    |    |  |
| 12   |  | Construction  |                                  |                 |              |              |                 |                |                     |                   | 06/01/27                      | 05/30/28                    |  |               |                                    |                       |    |    | Construction |    |    |    |      |    |    |    |      |    |    |    |  |
| 13   | BR   | Pool house renovations and pump house improvements  | Anna T. Jordan Pool House        | 0-In Discussion | Not Required | Not Required | Not Required    | Not Required   | Required            | Required          | 08/01/26                      | 02/03/28                    | \$1,090,000                                    |               | Anna T. Jordan Pool House          |                       |    |    |              |    |    |    |      |    |    |    |      |    |    |    |  |
| 14   |  | Design  |                                  |                 |              |              |                 |                |                     |                   | 08/01/26                      | 04/27/27                    |  |               | Design                             |                       |    |    |              |    |    |    |      |    |    |    |      |    |    |    |  |
| 15   |  | Construction  |                                  |                 |              |              |                 |                |                     |                   | 04/28/27                      | 02/03/28                    |  |               |                                    |                       |    |    | Construction |    |    |    |      |    |    |    |      |    |    |    |  |
| 16   | St. G  | Soccer field improvements - Baton Rouge Soccer Club   | Burbank Soccer Fields            | 0-In Discussion | Not Required | Next Steps   | Not Required    | Required       | Submitted           | Required          | Not Required                  | 08/01/26                    | 08/05/27                                       | \$1,090,000   | 148                                | Burbank Soccer Fields |    |    |              |    |    |    |      |    |    |    |      |    |    |    |  |
| 17   |  | Design  |                                  |                 |              |              |                 |                |                     |                   | 08/01/26                      | 12/28/26                    |  |               | Design                             |                       |    |    |              |    |    |    |      |    |    |    |      |    |    |    |  |
| 18   |  | Construction  |                                  |                 |              |              |                 |                |                     |                   | 12/29/26                      | 08/05/27                    |  |               |                                    |                       |    |    | Construction |    |    |    |      |    |    |    |      |    |    |    |  |
| 19   | St. G  | Observatory caretaker overnight facility  | Highland Observatory Master Plan | 0-In Discussion | Not Required | Completed    | Not Required    | Not Required   | Required            | Not Required      | 08/01/26                      | 04/27/27                    | \$545,000                                      | 61            | Highland Observatory Master Plan   |                       |    |    |              |    |    |    |      |    |    |    |      |    |    |    |  |
| 20   |  | Design  |                                  |                 |              |              |                 |                |                     |                   | 08/01/26                      | 10/29/26                    |  |               | Design                             |                       |    |    |              |    |    |    |      |    |    |    |      |    |    |    |  |
| 21   |  | Construction  |                                  |                 |              |              |                 |                |                     |                   | 10/30/26                      | 04/27/27                    |  |               |                                    |                       |    |    | Construction |    |    |    |      |    |    |    |      |    |    |    |  |
| 22   | St. G  | Addition of pickleball courts in a variety of styles and locations - covered & indoor                       | Indoor Pickleball Facility       | 0-In Discussion | ?            | ?            | ?               | Required       | Not Required        | Next Steps        | Required                      | 09/01/26                    | 09/29/29                                       | \$13,080,000  |                                    | Indc                  |    |    |              |    |    |    |      |    |    |    |      |    |    |    |  |
| 23   |  | Design  |                                  |                 |              |              |                 |                |                     |                   | 09/01/26                      | 05/17/28                    |  |               | Design                             |                       |    |    |              |    |    |    |      |    |    |    |      |    |    |    |  |
| 24   |  | Construction  |                                  |                 |              |              |                 |                |                     |                   | 05/18/28                      | 09/29/29                    |  |               |                                    |                       |    |    | Con          |    |    |    |      |    |    |    |      |    |    |    |  |
| 25   | BR   | In discussion with the Rec Center Transition Plan for replacement of the pool & pool house.                 | City Brooks Pool & Pool House    | 0-In Discussion | Not Required | Not Required | Not Required    | Not Required   | Next Steps          | Required          | 10/01/26                      | 01/07/29                    | \$2,943,000                                    |               | City Brooks Pool & Po              |                       |    |    |              |    |    |    |      |    |    |    |      |    |    |    |  |
| 26   |  | Design  |                                  |                 |              |              |                 |                |                     |                   | 10/01/26                      | 11/19/27                    |  |               | Design                             |                       |    |    |              |    |    |    |      |    |    |    |      |    |    |    |  |
| 27   |  | Construction  |                                  |                 |              |              |                 |                |                     |                   | 11/20/27                      | 01/07/29                    |  |               |                                    |                       |    |    | Construction |    |    |    |      |    |    |    |      |    |    |    |  |
| 28   | Un   | Greenwood Park Disc Golf Course at Lavey Lane with BRDGA  | Greenwood Disc Golf Course       | 0-In Discussion | Not Required | Next Steps   | Not Required    | Not Required   | Required            | Not Required      | 10/01/26                      | 04/28/27                    | \$100,000                                      |               | Greenwood Disc Golf Course         |                       |    |    |              |    |    |    |      |    |    |    |      |    |    |    |  |
| 29   |  | Design  |                                  |                 |              |              |                 |                |                     |                   | 10/01/26                      | 12/29/26                    |  |               | Design                             |                       |    |    |              |    |    |    |      |    |    |    |      |    |    |    |  |
| 30   |  | Construction  |                                  |                 |              |              |                 |                |                     |                   | 12/30/26                      | 04/28/27                    |  |               |                                    |                       |    |    | Construction |    |    |    |      |    |    |    |      |    |    |    |  |
| 31   | Un   | Master Plan development to address circulation, erosion, and increase visitation and awareness of the site. | Cohn Arb Master Plan & Ph 1      | 0-In Discussion | Not Required | Not Required | Not Required    | Not Required   | Required            | Required          | 10/05/26                      | 07/25/28                    | \$817,500                                      |               | Cohn Arb Master Plan & Ph 1        |                       |    |    |              |    |    |    |      |    |    |    |      |    |    |    |  |
| 32   |  | Design  |                                  |                 |              |              |                 |                |                     |                   | 10/05/26                      | 07/31/27                    |  |               | Design                             |                       |    |    |              |    |    |    |      |    |    |    |      |    |    |    |  |
| 33   |  | Construction  |                                  |                 |              |              |                 |                |                     |                   | 08/01/27                      | 07/25/28                    |  |               |                                    |                       |    |    | Construction |    |    |    |      |    |    |    |      |    |    |    |  |
| 34   | Part of IYP3, the Recreation Transition Plan - Design and Construct Two New Tier 3 (Outdoor Recreation Hubs) Recreation Centers. | 2026-28 Tier 3 Recreation Center A  | 0-In Discussion                  | Not Required    | Not Required | Not Required | Not Required    | Not Required   | Next Steps          | Required          | 10/05/26                      | 03/27/28                    | \$2,180,000                                    |               | 2026-28 Tier 3 Recreation Center A |                       |    |    |              |    |    |    |      |    |    |    |      |    |    |    |  |
| 35   |  | Design  |                                  |                 |              |              |                 |                |                     |                   | 10/05/26                      | 07/01/27                    |  |               | Design                             |                       |    |    |              |    |    |    |      |    |    |    |      |    |    |    |  |
| 36   |  | Construction  |                                  |                 |              |              |                 |                |                     |                   | 07/02/27                      | 03/27/28                    |  |               |                                    |                       |    |    | Construction |    |    |    |      |    |    |    |      |    |    |    |  |

# PHASE 0: CURRENT PROJECTS NOT YET STARTED

## 1st 3-Year Strategic Plan within IYP3: 2026 - 2028 (2025 Transition Year)

| City | Project Need & Description  | PROJECT                            | Current Phase   | MOU          | CEA          | Grant        | Outside Funding | Capital Outlay | Stakeholder Meeting | Community Meeting | Estimated Project Start Date <sup>1</sup> | Estimated Project End Date <sup>2</sup> | Estimated 2026-2028 Design & Construction Cost | IYP3 PRIORITY | 2026                               |    |    |    | 2027 |    |    |    | 2028 |    |    |    | 2029 |    |    |    | 2030 |    |    |    | 2031 |    |    |    |  |  |  |  |
|------|---|------------------------------------|-----------------|--------------|--------------|--------------|-----------------|----------------|---------------------|-------------------|---|---|--|---------------|------------------------------------|----|----|----|------|----|----|----|------|----|----|----|------|----|----|----|------|----|----|----|------|----|----|----|--|--|--|--|
|      |   |                                    |                 |              |              |              |                 |                |                     |                   |   |   |  |               | Q1                                 | Q2 | Q3 | Q4 | Q1   | Q2 | Q3 | Q4 | Q1   | Q2 | Q3 | Q4 | Q1   | Q2 | Q3 | Q4 | Q1   | Q2 | Q3 | Q4 | Q1   | Q2 | Q3 | Q4 |  |  |  |  |
| 37   | Part of IYP3, the Recreation Transition Plan - Design and Construct Two New Tier 3 (Outdoor Recreation Hubs) Recreation Centers.  | 2026-28 Tier 3 Recreation Center B | 0-In Discussion | Not Required | Not Required | Not Required | Not Required    | Not Required   | Next Steps          | Required          | 10/05/26                                  | 03/27/28                                | \$2,180,000                                    |               | 2026-28 Tier 3 Recreation Center B |    |    |    |      |    |    |    |      |    |    |    |      |    |    |    |      |    |    |    |      |    |    |    |  |  |  |  |
| 38   |   | Design                             |                 |              |              |              |                 |                |                     |                   | 10/05/26                                  | 07/01/27                                |  |               | Design                             |    |    |    |      |    |    |    |      |    |    |    |      |    |    |    |      |    |    |    |      |    |    |    |  |  |  |  |
| 39   |   | Construction                       |                 |              |              |              |                 |                |                     |                   | 07/02/27                                  | 03/27/28                                |  |               | Construction                       |    |    |    |      |    |    |    |      |    |    |    |      |    |    |    |      |    |    |    |      |    |    |    |  |  |  |  |
| 40   | Terrace Street - Front Yard Bikes Design & Construction Plans. Capital Outlay Funding pending   | Terrace FYB Facility               | 0-In Discussion | Not Required | Not Required | Not Required | Not Required    | Submitted      | Required            | Not Required      | 10/05/26                                  | 06/25/28                                | \$486,000                                      | 31            | Terrace FYB Facility               |    |    |    |      |    |    |    |      |    |    |    |      |    |    |    |      |    |    |    |      |    |    |    |  |  |  |  |
| 41   |   | Design                             |                 |              |              |              |                 |                |                     |                   | 10/05/26                                  | 07/01/27                                |  |               | Design                             |    |    |    |      |    |    |    |      |    |    |    |      |    |    |    |      |    |    |    |      |    |    |    |  |  |  |  |
| 42   |   | Construction                       |                 |              |              |              |                 |                |                     |                   | 07/02/27                                  | 06/25/28                                |  |               | Construction                       |    |    |    |      |    |    |    |      |    |    |    |      |    |    |    |      |    |    |    |      |    |    |    |  |  |  |  |
| 43   | Develop Master plan and implement Phase 1 for a nature themed neighborhood park including amenities such as a new playground, parking, walks, improved fishing pond, and more.  | Doyle Bayou Park                   | 0-In Discussion | Not Required | Not Required | Not Required | Not Required    | Not Required   | Required            | Required          | 01/04/27                                  | 07/21/29                                |  |               | Doyle Bayou Park                   |    |    |    |      |    |    |    |      |    |    |    |      |    |    |    |      |    |    |    |      |    |    |    |  |  |  |  |
| 44   |   | Master Plan                        |                 |              |              |              |                 |                |                     |                   | 01/04/27                                  | 10/30/27                                |  |               | Master Plan                        |    |    |    |      |    |    |    |      |    |    |    |      |    |    |    |      |    |    |    |      |    |    |    |  |  |  |  |
| 45   |   | Design                             |                 |              |              |              |                 |                |                     |                   | 10/31/27                                  | 07/26/28                                |  |               | Design                             |    |    |    |      |    |    |    |      |    |    |    |      |    |    |    |      |    |    |    |      |    |    |    |  |  |  |  |
| 46   |   | Construction                       |                 |              |              |              |                 |                |                     |                   | 07/27/28                                  | 07/21/29                                |  |               | Construction                       |    |    |    |      |    |    |    |      |    |    |    |      |    |    |    |      |    |    |    |      |    |    |    |  |  |  |  |
| 47   | Park Site Improvements  | Red Oaks Park Site Improv          | 0-In Discussion | Not Required | Not Required | Not Required | Not Required    | Not Required   | Required            | Required          | 01/04/27                                  | 09/30/27                                | \$200,000                                      | 79            | Red Oaks Park Site Improv          |    |    |    |      |    |    |    |      |    |    |    |      |    |    |    |      |    |    |    |      |    |    |    |  |  |  |  |
| 48   |   | Design                             |                 |              |              |              |                 |                |                     |                   | 01/04/27                                  | 04/03/27                                |  |               | Design                             |    |    |    |      |    |    |    |      |    |    |    |      |    |    |    |      |    |    |    |      |    |    |    |  |  |  |  |
| 49   |   | Construction                       |                 |              |              |              |                 |                |                     |                   | 04/04/27                                  | 09/30/27                                |  |               | Construction                       |    |    |    |      |    |    |    |      |    |    |    |      |    |    |    |      |    |    |    |      |    |    |    |  |  |  |  |
| 50   | Park Site Improvements  | Tams Belaire Site Improvements     | 0-In Discussion | Completed    | Next Steps   | Not Required | Required        | ?              | Required            | Required          | 01/04/27                                  | 09/24/28                                | \$272,500                                      | 17            | Tams Belaire Site Improvements     |    |    |    |      |    |    |    |      |    |    |    |      |    |    |    |      |    |    |    |      |    |    |    |  |  |  |  |
| 51   |   | Design                             |                 |              |              |              |                 |                |                     |                   | 01/04/27                                  | 09/30/27                                |  |               | Design                             |    |    |    |      |    |    |    |      |    |    |    |      |    |    |    |      |    |    |    |      |    |    |    |  |  |  |  |
| 52   |   | Construction                       |                 |              |              |              |                 |                |                     |                   | 10/01/27                                  | 09/24/28                                |  |               | Construction                       |    |    |    |      |    |    |    |      |    |    |    |      |    |    |    |      |    |    |    |      |    |    |    |  |  |  |  |
| 53   | Youth Soccer Fields & flag football, and other multi-use purpose fields. Phase 3 of Greenwood Master Plan.  | Greenwood Sports Fields            | 0-In Discussion | Not Required | Not Required | Not Required | Required        | Not Required   | Required            | Required          | 02/01/27                                  | 06/04/28                                | \$2,725,000                                    |               | Greenwood Sports Fields            |    |    |    |      |    |    |    |      |    |    |    |      |    |    |    |      |    |    |    |      |    |    |    |  |  |  |  |
| 54   |   | Design                             |                 |              |              |              |                 |                |                     |                   | 02/01/27                                  | 09/08/27                                |  |               | Design                             |    |    |    |      |    |    |    |      |    |    |    |      |    |    |    |      |    |    |    |      |    |    |    |  |  |  |  |
| 55   |   | Construction                       |                 |              |              |              |                 |                |                     |                   | 09/09/27                                  | 06/04/28                                |  |               | Construction                       |    |    |    |      |    |    |    |      |    |    |    |      |    |    |    |      |    |    |    |      |    |    |    |  |  |  |  |
| 56   | Planned relocation of the Burbank Dog Park to ease congestion and reduce user conflicts at the heavily used soccer complex.   | Highland Road Dog Park             | 0-In Discussion | Not Required | Not Required | Not Required | Not Required    | Not Required   | Required            | Required          | 02/01/27                                  | 06/04/28                                | \$408,750                                      | 61            | Highland Road Dog Park             |    |    |    |      |    |    |    |      |    |    |    |      |    |    |    |      |    |    |    |      |    |    |    |  |  |  |  |
| 57   |   | Design                             |                 |              |              |              |                 |                |                     |                   | 02/01/27                                  | 09/08/27                                |  |               | Design                             |    |    |    |      |    |    |    |      |    |    |    |      |    |    |    |      |    |    |    |      |    |    |    |  |  |  |  |
| 58   |   | Construction                       |                 |              |              |              |                 |                |                     |                   | 09/09/27                                  | 06/04/28                                |  |               | Construction                       |    |    |    |      |    |    |    |      |    |    |    |      |    |    |    |      |    |    |    |      |    |    |    |  |  |  |  |
| 59   | Soccer Field Renovations to serve youth soccer in centrally located community park Synthetic Turf & new lighting for some existing soccer fields  | Independence Soccer Fields         | 0-In Discussion | Not Required | Next Steps   | Not Required | Required        | Not Required   | Required            | Required          | 02/01/27                                  | 06/04/28                                | \$2,180,000                                    | 109           | Independence Soccer Fields         |    |    |    |      |    |    |    |      |    |    |    |      |    |    |    |      |    |    |    |      |    |    |    |  |  |  |  |
| 60   |   | Design                             |                 |              |              |              |                 |                |                     |                   | 02/01/27                                  | 09/08/27                                |  |               | Design                             |    |    |    |      |    |    |    |      |    |    |    |      |    |    |    |      |    |    |    |      |    |    |    |  |  |  |  |
| 61   |   | Construction                       |                 |              |              |              |                 |                |                     |                   | 09/09/27                                  | 06/04/28                                |  |               | Construction                       |    |    |    |      |    |    |    |      |    |    |    |      |    |    |    |      |    |    |    |      |    |    |    |  |  |  |  |
| 62   | Expressway Park and E. Polk Street Master Plans: New site improvements will elevate recreational quality and strengthen connections with surrounding neighborhoods—celebrating local history. Funding is supported by the Federal Highway Administration through DOTD.  | Expressway Masterplan              | 0-In Discussion | Not Required | Not Required | Completed    | Not Required    | Not Required   | Required            | Required          | 01/01/28                                  | 02/13/31                                | \$4,905,000                                    | 7             | Expressway Masterplan              |    |    |    |      |    |    |    |      |    |    |    |      |    |    |    |      |    |    |    |      |    |    |    |  |  |  |  |
| 63   |   | Master Plans                       |                 |              |              |              |                 |                |                     |                   | 01/01/28                                  | 12/25/28                                |  |               | Master Plans                       |    |    |    |      |    |    |    |      |    |    |    |      |    |    |    |      |    |    |    |      |    |    |    |  |  |  |  |
| 64   |   | Design                             |                 |              |              |              |                 |                |                     |                   | 12/26/28                                  | 12/20/29                                |  |               | Design                             |    |    |    |      |    |    |    |      |    |    |    |      |    |    |    |      |    |    |    |      |    |    |    |  |  |  |  |
| 65   |   | Construction                       |                 |              |              |              |                 |                |                     |                   | 12/21/29                                  | 02/13/31                                |  |               | Construction                       |    |    |    |      |    |    |    |      |    |    |    |      |    |    |    |      |    |    |    |      |    |    |    |  |  |  |  |
| 66   | Expressway Park and E. Polk Street Master Plans: New site improvements will elevate recreational quality and strengthen connections with surrounding neighborhoods—celebrating local history. Funding is supported by the Federal Highway Administration through DOTD.  | E Polk Masterplan                  | 0-In Discussion | Not Required | Not Required | Completed    | Not Required    | Not Required   | Required            | Required          | 01/01/28                                  | 02/13/31                                | \$4,905,000                                    | 7             | E Polk Masterplan                  |    |    |    |      |    |    |    |      |    |    |    |      |    |    |    |      |    |    |    |      |    |    |    |  |  |  |  |
| 67   |   | Master Plans                       |                 |              |              |              |                 |                |                     |                   | 01/01/28                                  | 12/25/28                                |  |               | Master Plans                       |    |    |    |      |    |    |    |      |    |    |    |      |    |    |    |      |    |    |    |      |    |    |    |  |  |  |  |
| 68   |   | Design                             |                 |              |              |              |                 |                |                     |                   | 12/26/28                                  | 12/20/29                                |  |               | Design                             |    |    |    |      |    |    |    |      |    |    |    |      |    |    |    |      |    |    |    |      |    |    |    |  |  |  |  |
| 69   |   | Construction                       |                 |              |              |              |                 |                |                     |                   | 12/21/29                                  | 02/13/31                                |  |               | Construction                       |    |    |    |      |    |    |    |      |    |    |    |      |    |    |    |      |    |    |    |      |    |    |    |  |  |  |  |
| 70   | Ice Hockey Facility to support ice hockey leagues and training as well as figure skating & public skating   | Ice Hockey Facility (Location TBD) | 0-In Discussion |              |              |              |                 |                |                     |                   | 01/01/28                                  | 10/21/29                                |  |               | Ice Hockey Facility (Location TBD) |    |    |    |      |    |    |    |      |    |    |    |      |    |    |    |      |    |    |    |      |    |    |    |  |  |  |  |
| 71   |   | Design                             |                 |              |              |              |                 |                |                     |                   | 01/01/28                                  | 10/26/28                                |  |               | Design                             |    |    |    |      |    |    |    |      |    |    |    |      |    |    |    |      |    |    |    |      |    |    |    |  |  |  |  |
| 72   |   | Construction                       |                 |              |              |              |                 |                |                     |                   | 10/27/28                                  | 10/21/29                                |  |               | Construction                       |    |    |    |      |    |    |    |      |    |    |    |      |    |    |    |      |    |    |    |      |    |    |    |  |  |  |  |
| 73   | BREC is looking to construct a large indoor multi-purpose sports court facility in the parish at a location to be determined. The facility could feature up to 8 basketball courts as well as various other courts, such as pickleball and volleyball. It would also include concession facilities, spectator seating, and the ability to host additional Special events. | Sportsplex Facility (Location TBD) | 0-In Discussion |              |              |              |                 |                |                     |                   | 01/01/28                                  | 10/21/29                                |  |               | Sportsplex Facility (Location TBD) |    |    |    |      |    |    |    |      |    |    |    |      |    |    |    |      |    |    |    |      |    |    |    |  |  |  |  |
| 74   |   | Design                             |                 |              |              |              |                 |                |                     |                   | 01/01/28                                  | 10/26/28                                |  |               | Design                             |    |    |    |      |    |    |    |      |    |    |    |      |    |    |    |      |    |    |    |      |    |    |    |  |  |  |  |
| 75   |   | Construction                       |                 |              |              |              |                 |                |                     |                   | 10/27/28                                  | 10/21/29                                |  |               | Construction                       |    |    |    |      |    |    |    |      |    |    |    |      |    |    |    |      |    |    |    |      |    |    |    |  |  |  |  |

# PHASE 0: CURRENT PROJECTS NOT YET STARTED

## 1st 3-Year Strategic Plan within IYP3: 2026 - 2028 (2025 Transition Year)

| City | Project Need & Description  | PROJECT   | Current Phase   | MOU          | CEA          | Grant        | Outside Funding | Capital Outlay | Stakeholder Meeting | Community Meeting | Estimated Project Start Date <sup>1</sup> | Estimated Project End Date* | Estimated 2026-2028 Design & Construction Cost | IYP3 PRIORITY | 2026   |    |    |    | 2027 |    |    |    | 2028 |    |    |    | 2029 |    |    |    | 2030 |    |    |    | 2031 |    |    |    |    |    |    |    |  |  |  |  |
|------|---|---|-----------------|--------------|--------------|--------------|-----------------|----------------|---------------------|-------------------|---|-----------------------------|--|---------------|--|----|----|----|------|----|----|----|------|----|----|----|------|----|----|----|------|----|----|----|------|----|----|----|----|----|----|----|--|--|--|--|
|      |   |   |                 |              |              |              |                 |                |                     |                   |   |                             |  |               | Q1   | Q2 | Q3 | Q4 | Q1   | Q2 | Q3 | Q4 | Q1   | Q2 | Q3 | Q4 | Q1   | Q2 | Q3 | Q4 | Q1   | Q2 | Q3 | Q4 | Q1   | Q2 | Q3 | Q4 | Q1 | Q2 | Q3 | Q4 |  |  |  |  |
| 304  |   | <b>Zoo Priorities</b>                               |                 |              |              |              |                 |                |                     |                   | 05/01/26                                  | 05/31/31                    | \$2,725,000                                    |               | Zoo Priorities                               |    |    |    |      |    |    |    |      |    |    |    |      |    |    |    |      |    |    |    |      |    |    |    |    |    |    |    |  |  |  |  |
| 305  | Un AZA required - Elevate Guest experiences and Animal welfare  | <b>Zoo African Flight exhibit</b>                   | 1-Contracting   | Not Required | Not Required | Not Required | ?               | Not Required   | Required            | Not Required      | 05/01/26                                  | 05/25/27                    |  |               | Zoo African Flight exhibit                   |    |    |    |      |    |    |    |      |    |    |    |      |    |    |    |      |    |    |    |      |    |    |    |    |    |    |    |  |  |  |  |
| 306  |   | Design  |                 |              |              |              |                 |                |                     |                   | 05/01/26                                  | 08/28/26                    |  |               | Design                                       |    |    |    |      |    |    |    |      |    |    |    |      |    |    |    |      |    |    |    |      |    |    |    |    |    |    |    |  |  |  |  |
| 307  |   | Construction  |                 |              |              |              |                 |                |                     |                   | 08/29/26                                  | 05/25/27                    |  |               | Construction                                 |    |    |    |      |    |    |    |      |    |    |    |      |    |    |    |      |    |    |    |      |    |    |    |    |    |    |    |  |  |  |  |
| 308  | Un Zoo USDA & AZA required - replace shade structure with metal structure with shade cloth.   | <b>Zoo Black Rhino exhibit shelter/Shade</b>        | 1-Contracting   | Not Required | Not Required | Not Required | ?               | Not Required   | Required            | Not Required      | 05/01/26                                  | 08/28/26                    |  |               | Zoo Black Rhino exhibit shelter/Shade        |    |    |    |      |    |    |    |      |    |    |    |      |    |    |    |      |    |    |    |      |    |    |    |    |    |    |    |  |  |  |  |
| 309  |   | Design  |                 |              |              |              |                 |                |                     |                   | 05/01/26                                  | 05/31/26                    |  |               | Design                                       |    |    |    |      |    |    |    |      |    |    |    |      |    |    |    |      |    |    |    |      |    |    |    |    |    |    |    |  |  |  |  |
| 310  |   | Construction  |                 |              |              |              |                 |                |                     |                   | 05/31/26                                  | 08/28/26                    |  |               | Construction                                 |    |    |    |      |    |    |    |      |    |    |    |      |    |    |    |      |    |    |    |      |    |    |    |    |    |    |    |  |  |  |  |
| 311  | Un Erosion repair and prevention on pond edge and bridge replacement  | <b>Zoo South America Pond</b>                       | 1-Contracting   | Not Required | Not Required | Not Required | ?               | Not Required   | Required            | Not Required      | 05/01/26                                  | 07/24/27                    |  |               | Zoo South America Pond                       |    |    |    |      |    |    |    |      |    |    |    |      |    |    |    |      |    |    |    |      |    |    |    |    |    |    |    |  |  |  |  |
| 312  |   | Design  |                 |              |              |              |                 |                |                     |                   | 05/01/26                                  | 11/16/26                    | #INVALID REF                                   |               | Design                                       |    |    |    |      |    |    |    |      |    |    |    |      |    |    |    |      |    |    |    |      |    |    |    |    |    |    |    |  |  |  |  |
| 313  |   | Construction  |                 |              |              |              |                 |                |                     |                   | 11/17/26                                  | 07/24/27                    |  |               | Construction                                 |    |    |    |      |    |    |    |      |    |    |    |      |    |    |    |      |    |    |    |      |    |    |    |    |    |    |    |  |  |  |  |
| 314  | Un AZA required - replace commissary (animal kitchen) with new building at old front entry  | <b>Zoo Commissary /Animal Kitchen</b>               | 0-In Discussion | Not Required | Not Required | Not Required | ?               | Not Required   | Required            | Not Required      | 08/01/26                                  | 04/21/28                    |  |               | Zoo Commissary /Animal Kitchen               |    |    |    |      |    |    |    |      |    |    |    |      |    |    |    |      |    |    |    |      |    |    |    |    |    |    |    |  |  |  |  |
| 315  |   | Design  |                 |              |              |              |                 |                |                     |                   | 08/01/26                                  | 04/27/27                    |  |               | Design                                       |    |    |    |      |    |    |    |      |    |    |    |      |    |    |    |      |    |    |    |      |    |    |    |    |    |    |    |  |  |  |  |
| 316  |   | Construction  |                 |              |              |              |                 |                |                     |                   | 04/28/27                                  | 04/21/28                    |  |               | Construction                                 |    |    |    |      |    |    |    |      |    |    |    |      |    |    |    |      |    |    |    |      |    |    |    |    |    |    |    |  |  |  |  |
| 317  | Un Addition of glass viewing area   | <b>Zoo Maned Wolf Glass Viewing</b>                 | 0-In Discussion | Not Required | Not Required | Not Required | ?               | Not Required   | Required            | Not Required      | 01/04/27                                  | 12/29/27                    |  |               | Zoo Maned Wolf Glass Viewing                 |    |    |    |      |    |    |    |      |    |    |    |      |    |    |    |      |    |    |    |      |    |    |    |    |    |    |    |  |  |  |  |
| 318  |   | Design  |                 |              |              |              |                 |                |                     |                   | 01/04/27                                  | 07/02/27                    |  |               | Design                                       |    |    |    |      |    |    |    |      |    |    |    |      |    |    |    |      |    |    |    |      |    |    |    |    |    |    |    |  |  |  |  |
| 319  |   | Construction  |                 |              |              |              |                 |                |                     |                   | 07/03/27                                  | 12/29/27                    |  |               | Construction                                 |    |    |    |      |    |    |    |      |    |    |    |      |    |    |    |      |    |    |    |      |    |    |    |    |    |    |    |  |  |  |  |
| 320  | Un Zoo Future Exhibits - Phase II - Africa: The completion of the Africa section of the zoo masterplan featuring gorilla, lion, lesser flamingo & okapi.  | <b>Zoo Phase II - Africa</b>                        | 0-In Discussion | Not Required | Not Required | Not Required | Required        | ?              | Required            | Not Required      | 01/04/27                                  | 01/12/29                    | \$20,000,000                                   |               | Zoo Phase II - Africa                        |    |    |    |      |    |    |    |      |    |    |    |      |    |    |    |      |    |    |    |      |    |    |    |    |    |    |    |  |  |  |  |
| 321  |   | Design  |                 |              |              |              |                 |                |                     |                   | 01/04/27                                  | 12/29/27                    |  |               | Design                                       |    |    |    |      |    |    |    |      |    |    |    |      |    |    |    |      |    |    |    |      |    |    |    |    |    |    |    |  |  |  |  |
| 322  |   | Construction  |                 |              |              |              |                 |                |                     |                   | 12/30/27                                  | 01/12/29                    |  |               | Construction                                 |    |    |    |      |    |    |    |      |    |    |    |      |    |    |    |      |    |    |    |      |    |    |    |    |    |    |    |  |  |  |  |
| 323  | Un New South American decking system for public viewing of Spider Monkey exhibit, ADA improvements, pond bank stabilization.  | <b>Zoo South America Spider monkey viewing deck</b> | 0-In Discussion | Not Required | Not Required | Not Required | ?               | Not Required   | Required            | Not Required      | 01/04/27                                  | 03/18/28                    |  |               | Zoo South America Spider monkey viewing deck |    |    |    |      |    |    |    |      |    |    |    |      |    |    |    |      |    |    |    |      |    |    |    |    |    |    |    |  |  |  |  |
| 324  |   | Design  |                 |              |              |              |                 |                |                     |                   | 01/04/27                                  | 08/11/27                    |  |               | Design                                       |    |    |    |      |    |    |    |      |    |    |    |      |    |    |    |      |    |    |    |      |    |    |    |    |    |    |    |  |  |  |  |
| 325  |   | Construction  |                 |              |              |              |                 |                |                     |                   | 08/12/27                                  | 03/18/28                    |  |               | Construction                                 |    |    |    |      |    |    |    |      |    |    |    |      |    |    |    |      |    |    |    |      |    |    |    |    |    |    |    |  |  |  |  |
| 326  | Un AZA requirement for removal of outdated exhibits   | <b>Zoo Parrot Paradise demo</b>                     | 0-In Discussion | Not Required | Not Required | Not Required | Not Required    | Not Required   | Not Required        | Not Required      | 04/05/27                                  | 10/01/27                    |  |               | Zoo Parrot Paradise demo                     |    |    |    |      |    |    |    |      |    |    |    |      |    |    |    |      |    |    |    |      |    |    |    |    |    |    |    |  |  |  |  |
| 327  |   | Design  |                 |              |              |              |                 |                |                     |                   | 04/05/27                                  | 06/03/27                    |  |               | Design                                       |    |    |    |      |    |    |    |      |    |    |    |      |    |    |    |      |    |    |    |      |    |    |    |    |    |    |    |  |  |  |  |
| 328  |   | Construction  |                 |              |              |              |                 |                |                     |                   | 06/04/27                                  | 10/01/27                    |  |               | Construction                                 |    |    |    |      |    |    |    |      |    |    |    |      |    |    |    |      |    |    |    |      |    |    |    |    |    |    |    |  |  |  |  |
| 329  | Un AZA required - Build new exhibit and holding area for primate species  | <b>Zoo Macaque (primate) exhibit</b>                | 0-In Discussion | Not Required | Not Required | Not Required | Not Required    | Not Required   | Required            | Not Required      | 01/03/28                                  | 09/18/30                    | \$1,200,000                                    |               | Zoo Macaque (primate) exhibit                |    |    |    |      |    |    |    |      |    |    |    |      |    |    |    |      |    |    |    |      |    |    |    |    |    |    |    |  |  |  |  |
| 330  |   | Design  |                 |              |              |              |                 |                |                     |                   | 01/03/28                                  | 03/27/29                    |  |               | Design                                       |    |    |    |      |    |    |    |      |    |    |    |      |    |    |    |      |    |    |    |      |    |    |    |    |    |    |    |  |  |  |  |
| 331  |   | Construction  |                 |              |              |              |                 |                |                     |                   | 03/28/29                                  | 09/18/30                    |  |               | Construction                                 |    |    |    |      |    |    |    |      |    |    |    |      |    |    |    |      |    |    |    |      |    |    |    |    |    |    |    |  |  |  |  |
| 332  | Un Zoo Future Exhibits - Phase III - Atchafalaya: Exhibits and a series of aquarium display explaining how the Atchafalaya impacted the southern Louisiana ecosystem, the species found there and the role the people & culture play on the industrialization of America. | <b>Zoo Phase III - Atchafalaya</b>                  | 0-In Discussion | Not Required | Not Required | Not Required | Required        | ?              | Required            | Not Required      | 06/01/29                                  | 05/31/31                    | estimate needed                                |               | Zoo Phase II                                 |    |    |    |      |    |    |    |      |    |    |    |      |    |    |    |      |    |    |    |      |    |    |    |    |    |    |    |  |  |  |  |
| 333  |   | Design  |                 |              |              |              |                 |                |                     |                   | 06/01/29                                  | 03/27/30                    |  |               | Design                                       |    |    |    |      |    |    |    |      |    |    |    |      |    |    |    |      |    |    |    |      |    |    |    |    |    |    |    |  |  |  |  |
| 334  |   | Construction  |                 |              |              |              |                 |                |                     |                   | 03/28/30                                  | 05/31/31                    |  |               | Construction                                 |    |    |    |      |    |    |    |      |    |    |    |      |    |    |    |      |    |    |    |      |    |    |    |    |    |    |    |  |  |  |  |

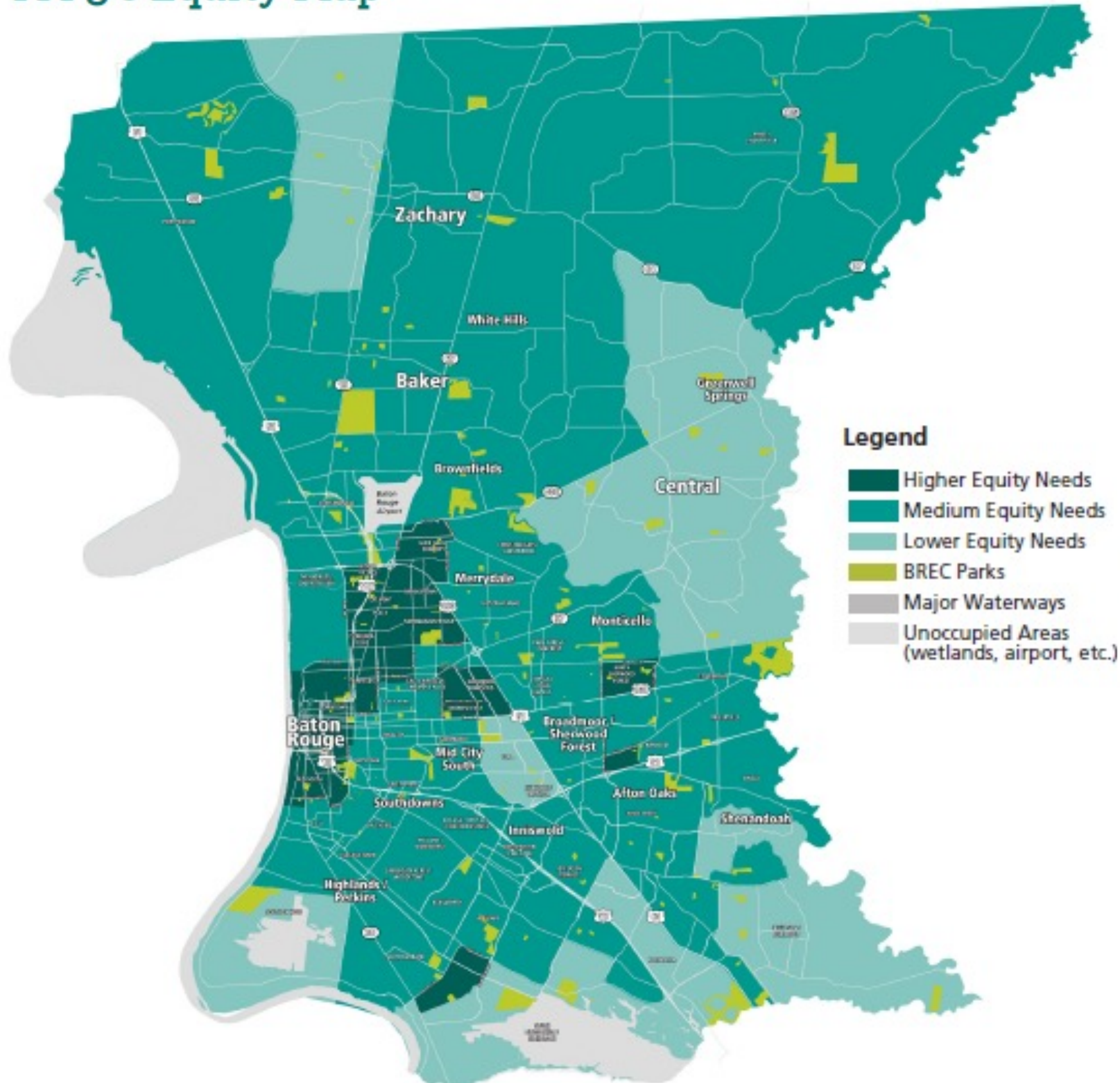
# PHASE 0: CURRENT PROJECTS NOT YET STARTED

## 1st 3-Year Strategic Plan within IYP3: 2026 - 2028 (2025 Transition Year)

| City | PARK TYPE    | PROJECT # | PROJECT                                    | Project Need & Description  | Current Phase   | MOU          | CEA          | Grant        | Outside Funding | Capital Outlay | Stakeholder Meeting | Community Meeting | Estimated Project Start Date¹ | Estimated Project End Date* | Estimated 2026-2028 Design & Construction Cost | IYP3 PRIORITY | 2025           |    |    |    | 2026 |    |    |    | 2027 |    |    |    | 2028 |    |    |    |
|------|--------------|-----------|--|---|-----------------|--------------|--------------|--------------|-----------------|----------------|---------------------|-------------------|-------------------------------|-----------------------------|--|---------------|----------------|----|----|----|------|----|----|----|------|----|----|----|------|----|----|----|
|      |              |           |  |   |                 |              |              |              |                 |                |                     |                   |                               |                             |  |               | Q1             | Q2 | Q3 | Q4 | Q1   | Q2 | Q3 | Q4 | Q1   | Q2 | Q3 | Q4 | Q1   | Q2 | Q3 | Q4 |
|      |              |           |  |   |                 |              |              |              |                 |                |                     |                   |                               |                             |  |               |                |    |    |    |      |    |    |    |      |    |    |    |      |    |    |    |
| 289  | Golf Courses |           | <b>Golf Course Priorities</b>              |   |                 |              |              |              |                 |                |                     |                   | 12/05/25                      | 05/10/28                    | \$2,725,000                                    |               | Golf Course F  |    |    |    |      |    |    |    |      |    |    |    |      |    |    |    |
| 290  | BR           |           | <b>City Park Cart Storage</b>              | New Cart Storage area - with Clubhouse Renovation   | 0-In Discussion | Not Required | Not Required | Not Required | Not Required    | Not Required   | Required            | Not Required      | 12/05/25                      | 05/10/28                    |  |               | City Park Cart |    |    |    |      |    |    |    |      |    |    |    |      |    |    |    |
| 291  |              |           | Design                                     |   |                 |              |              |              |                 |                |                     |                   | 12/05/25                      | 02/21/27                    |  |               | Design         |    |    |    |      |    |    |    |      |    |    |    |      |    |    |    |
| 292  |              |           | Construction                               |   |                 |              |              |              |                 |                |                     |                   | 02/22/27                      | 05/10/28                    |  |               | Construction   |    |    |    |      |    |    |    |      |    |    |    |      |    |    |    |
| 293  |              |           | <b>Santa Maria - exterior stairs</b>       |   |                 |              |              |              |                 |                |                     |                   |                               |                             |  |               |                |    |    |    |      |    |    |    |      |    |    |    |      |    |    |    |
| 294  | St G         |           | <b>Santa Maria Turn House Improvement</b>  | Concession Stand renovation with exterior siding, bigger area for customers, office, and rearrangement of Range Ball Dispenser to enhance customer experience | 0-In Discussion | Not Required | Not Required | Not Required | Not Required    | Not Required   | Required            | Not Required      | Q1-2028                       | Q3-2029                     |  |               |                |    |    |    |      |    |    |    |      |    |    |    |      |    |    |    |
| 295  | Un           |           | <b>Beaver Creek Bridge Resurfacing</b>     | Resurface bridges on holes 13 & 14  | 0-In Discussion | Not Required | Not Required | Not Required | Not Required    | Not Required   | Required            | Not Required      | Q1-2028                       | Q4-2028                     |  |               |                |    |    |    |      |    |    |    |      |    |    |    |      |    |    |    |
| 296  | St G         |           | <b>Santa Maria Bunkers</b>                 | Bunker drainage and maintenance renovation  | 0-In Discussion | Not Required | Not Required | Not Required | Not Required    | Not Required   | Required            | Not Required      | Q2-2027                       | Q2-2028                     |  |               |                |    |    |    |      |    |    |    |      |    |    |    |      |    |    |    |
| 297  | BR           |           | <b>Webb Putting Greens</b>                 | Re-grass and/or expand multiple putting greens  | 0-In Discussion | Not Required | Not Required | Not Required | Not Required    | Not Required   | Required            | Not Required      | Q2-2027                       | Q4-2028                     |  |               |                |    |    |    |      |    |    |    |      |    |    |    |      |    |    |    |
| 298  | Un           |           | <b>Beaver Creek Bunkers</b>                | Bunker drainage and maintenance renovation  | 0-In Discussion | Not Required | Not Required | Not Required | Not Required    | Not Required   | Required            | Not Required      | Q2-2027                       | Q4-2028                     |  |               |                |    |    |    |      |    |    |    |      |    |    |    |      |    |    |    |
| 299  | Un           |           | <b>Beaver Creek Cart Building</b>          | Cart Building – parking/charging reorganization for greater efficiency (CCD)  | 0-In Discussion | Not Required | Not Required | Not Required | Not Required    | Not Required   | Required            | Not Required      | Q2-2027                       | Q1-2028                     |  |               |                |    |    |    |      |    |    |    |      |    |    |    |      |    |    |    |
| 300  | Un           |           | <b>Beaver Creek Pond Banks</b>             | Stabilize pond banks on holes 11 & 12 (bulkhead/other?)   | 0-In Discussion | Not Required | Not Required | Not Required | Not Required    | Not Required   | Required            | Not Required      | Q3-2026                       | Q4-2027                     |  |               |                |    |    |    |      |    |    |    |      |    |    |    |      |    |    |    |
| 301  | St G         |           | <b>Santa Maria Clubhouse Restroom</b>      | Add 2nd stall in Ladies restroom and potential updates for prospective restaurant operation.  | 0-In Discussion | Not Required | Not Required | Not Required | Not Required    | Not Required   | Required            | Not Required      | Q3-2026                       | Q3-2027                     |  |               |                |    |    |    |      |    |    |    |      |    |    |    |      |    |    |    |
| 302  | BR           |           | <b>Webb Maint. Building &amp; Drainage</b> | Improvements to drainage and maintenance building   | 0-In Discussion | Not Required | Not Required | Not Required | Not Required    | Not Required   | Required            | Not Required      | Q3-2026                       | Q3-2027                     |  |               |                |    |    |    |      |    |    |    |      |    |    |    |      |    |    |    |
| 303  | St G         |           | <b>Santa Maria Cart Building</b>           | Cart Building – parking/charging reorganization for greater efficiency (CCD)  | 0-In Discussion | Not Required | Not Required | Not Required | Not Required    | Not Required   | Required            | Not Required      | Q3-2027                       | Q4-2028                     |  |               |                |    |    |    |      |    |    |    |      |    |    |    |      |    |    |    |

# RECREATION CENTER PLAN: STUDY OF RECREATION CENTERS

## IYP3's Equity Map



### Building a Stronger System for the Future: How do we reach BREC Rec Center 2.0 goal to create spaces with higher quality?

BREC Rec Center 2.0 is a more sustainable and community-focused model for our current recreation centers. Right now, we're spread too thin with 56 recreation centers that are mostly the same — and many aren't being used as much as they could be. Recreation Centers 2.0 is about creating fewer, but better spaces that truly serve the needs of each community. Instead of trying to keep up a large number of aging, underused buildings, we'll be putting our energy and resources into upgrading and building centers where they're really needed — places that people will actually use and enjoy. As part of the IYP3 vision, BREC set a goal to reduce the number of centers by 14. Decisions about which locations may change will be based on a mix of factors, like:

#### What We're Looking at when Making Decisions

- |   |  |  |   |
|---|--|--|---|
| <p><b>Location Considerations</b></p> <ul style="list-style-type: none"> <li>• Are there too many centers serving the same area?</li> <li>• Is there already a nearby community or senior center that meets the need?</li> <li>• Are we meeting equity goals and making sure centers are accessible to everyone?</li> </ul> | <p><b>How the Facility is Being Used</b></p> <ul style="list-style-type: none"> <li>• Is the building seeing low attendance?</li> <li>• Is the facility in poor shape — like no A/C or outdated infrastructure?</li> <li>• Are there only a few programs being offered?</li> </ul> | <p><b>Planning Ahead: Operational Considerations</b></p> <ul style="list-style-type: none"> <li>• Do we have enough staff to run the site effectively?</li> <li>• Are there opportunities to partner with other groups to serve the area?</li> </ul> | <p><b>What People are Telling Us</b></p> <ul style="list-style-type: none"> <li>• What are community members and BREC staff saying about the center and its value?</li> </ul> |
|---|--|--|---|

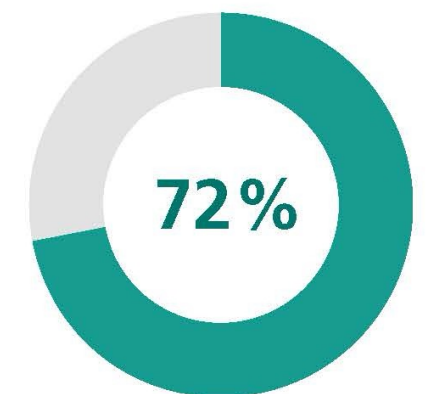
### Looking Ahead: How This Will All Happen

The move to a tiered recreation center system won't be happening overnight. BREC is currently building out a plan—Recreation Centers 2.0—that will guide how we make these changes in a thoughtful, step-by-step, and data-driven way. **This summer, we'll be hosting community conversations to explain why change is needed, share ideas, and most importantly—listen.** Your voice as staff is just as important in this process. We need your insight and experiences to help shape what comes next. You're the heart of this work—help us build a system that works better for you, and the communities you serve.

### What We're Working Toward

By planning ahead and being strategic with how we manage our recreation centers, BREC is making sure our community has access to clean, modern, and high-quality spaces that people actually want to use — not just now, but for the long run. And for staff, that means safer, better-equipped workplaces, clearer priorities, and more time and energy to focus on programs that truly make a difference.

This initiative reflects community feedback received during Imagine Your Parks 3.



*72% of residents support a change to fewer, but higher quality modern recreation facilities.*

#### Existing Build Type Key

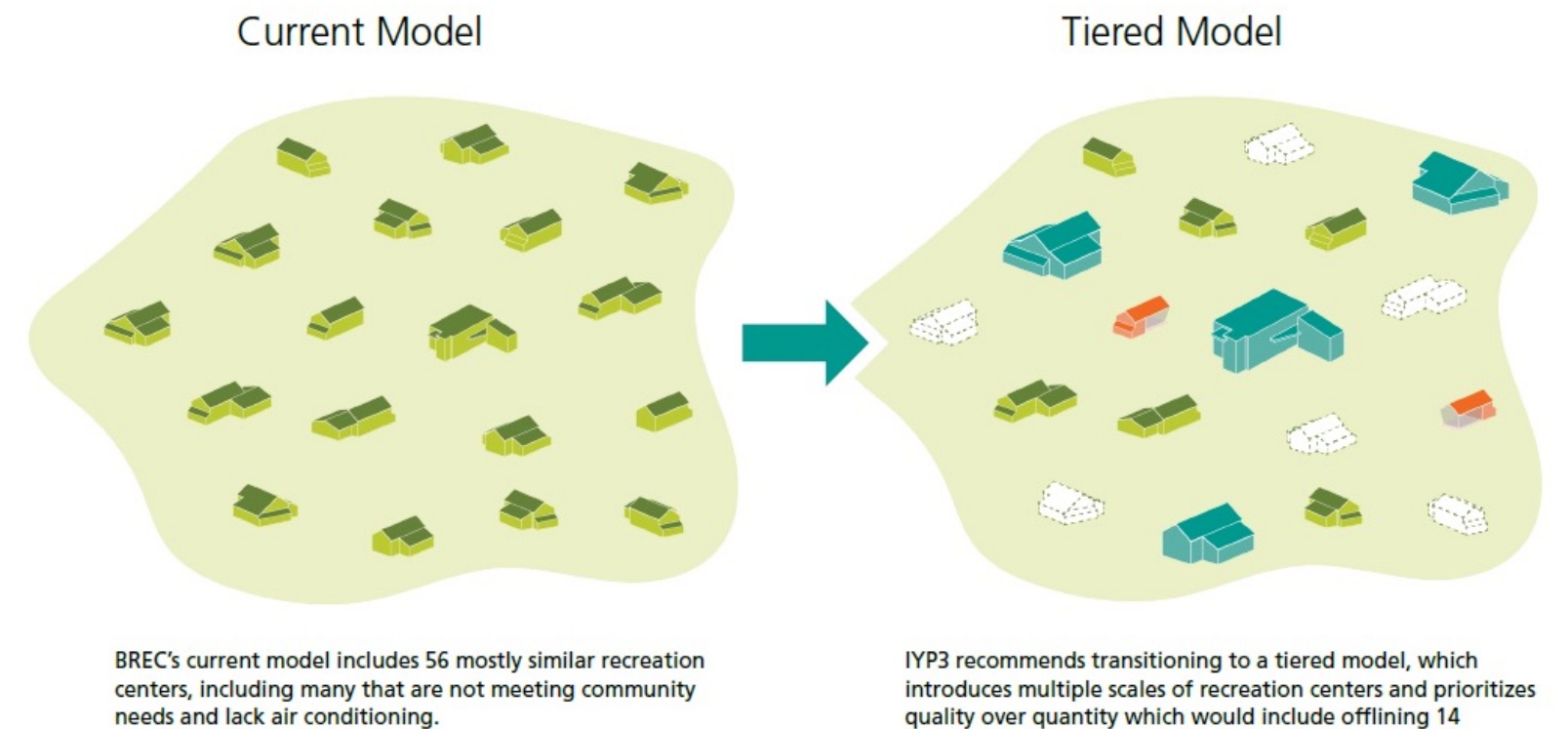
- **Recreation Center A** – Community Center & Gym
- **Recreation Center B** – Gym only
- **Community Center C** – Community Center Only

#### New Tier Type Key

- **Tier 1** – Community Center + Gym + Indoor Track
- **Tier 2** – Community Center + Outdoor Covered Courts
- **Tier 3** – Outdoor Covered Courts + New Restrooms

## Goals of the plan:

1. Introduce a Tiered Delivery Model
2. Improve Quality and Support Sustainable Staffing & Maintenance
3. All indoor Centers to be Air Conditioned
4. Support Equitable Access
5. Consistent Facility Standards
6. Optimize Use of BREC Resources
7. Identify Redundancies and Adapt into Low Maintenance Models
8. Address the diverse needs of EBR Communities



# TIER 1 RECREATION CENTER MODEL: COMMUNITY PROGRAM SPACE + GYM + INDOOR TRACK + OUTDOOR COVERED COURTS

## New Tier 1 Recreation Centers

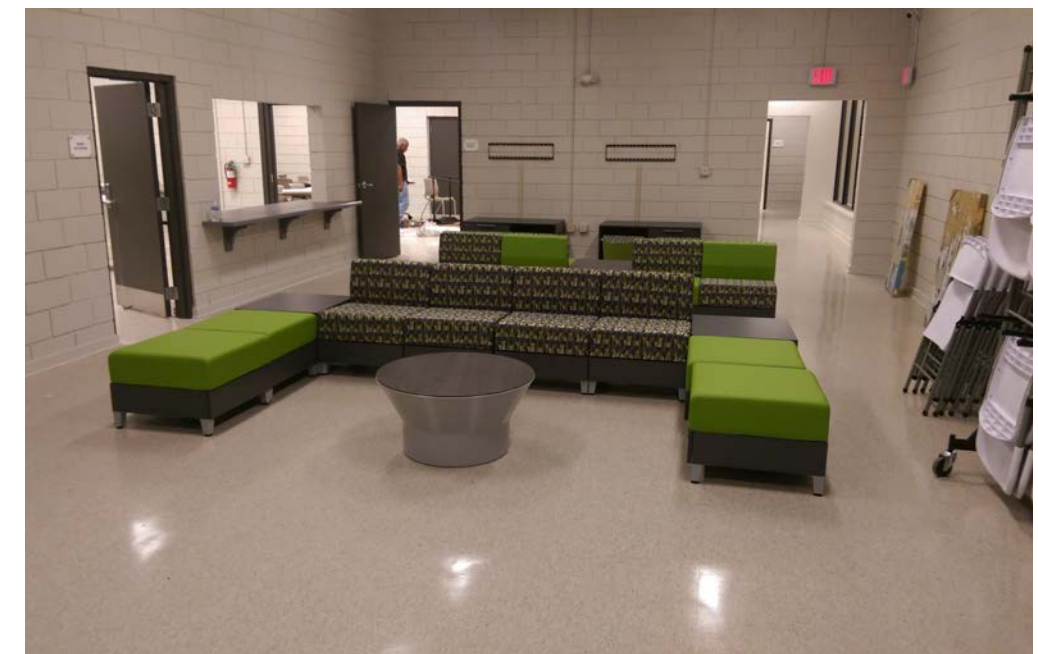
- Airline Community Park Safe room
- Memorial Park Safe Room
- Ben Burge Park
- Cadillac Street Park
- Expressway Park
- Independence Community Park
- Kernan Ave. Park
- Monte Sano Park
- North Sherwood Forest
- Reames Road Park
- Zachary Community Park



# TIER 1 RECREATION CENTER MODEL: COMMUNITY PROGRAM SPACE + GYM + INDOOR TRACK + OUTDOOR COVERED COURTS

## Existing Tier 1 Recreation Centers

- Anna T. Jordan Community Park
- Antioch Boulevard Park
- Baker Recreation Center
- Forest Community Park
- Gus Young Park
- Highland Road Community Park
- Howell Community Park
- Lovett Road Park
- North Sherwood Forest Community Park



# TIER 2 RECREATION CENTER MODEL: COMMUNITY PROGRAM SPACE + OUTDOOR COVERED COURTS

## New Tier 2 Recreation Centers

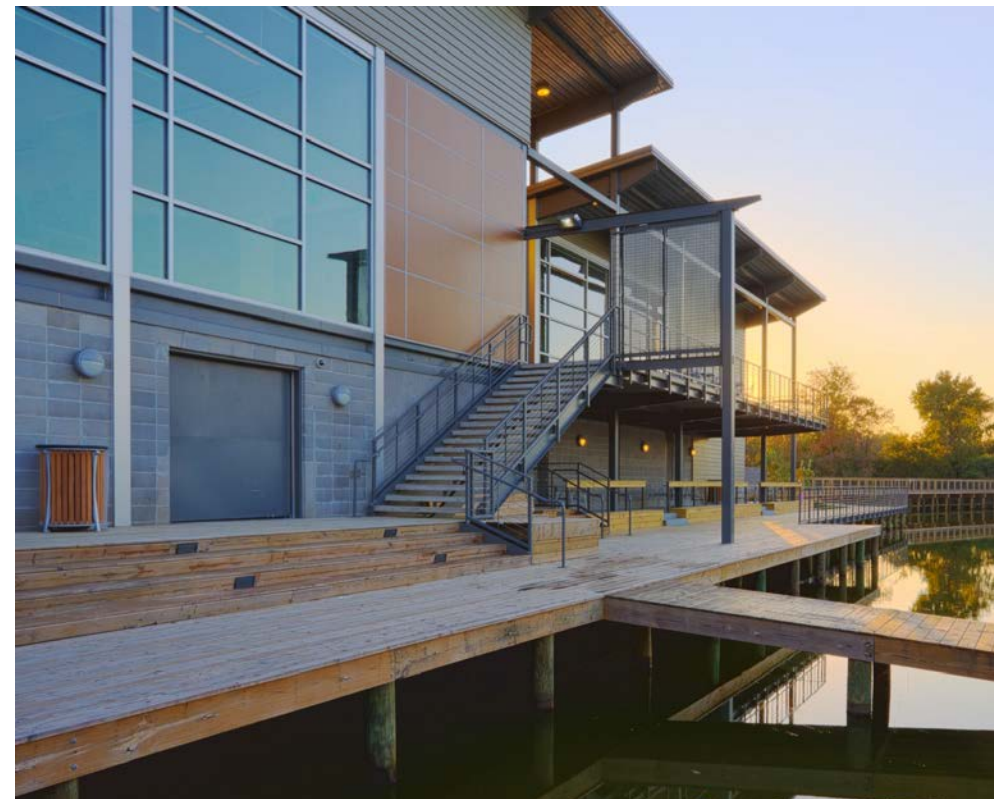
- Alsen Park
- Baringer Road Park
- Cedarcrest Park
- Cedar Ridge Drive Park -
- City-Brooks Community Park
- Hamilton Avenue Park
- Hartley/Vey Gardere Park
- Kathy Drive Park
- Mayfair Park
- Maplewood Drive Park
- Mills Avenue Park
- Nairn Drive Park
- Perkins Road Community Park
- Plank Road Park
- T.D. Bickham Jr., Park
- Tickie Saia Memorial Park



# TIER 2 RECREATION CENTER MODEL: COMMUNITY PROGRAM SPACE + OUTDOOR COVERED COURTS

## Existing Tier 2 Recreation Centers

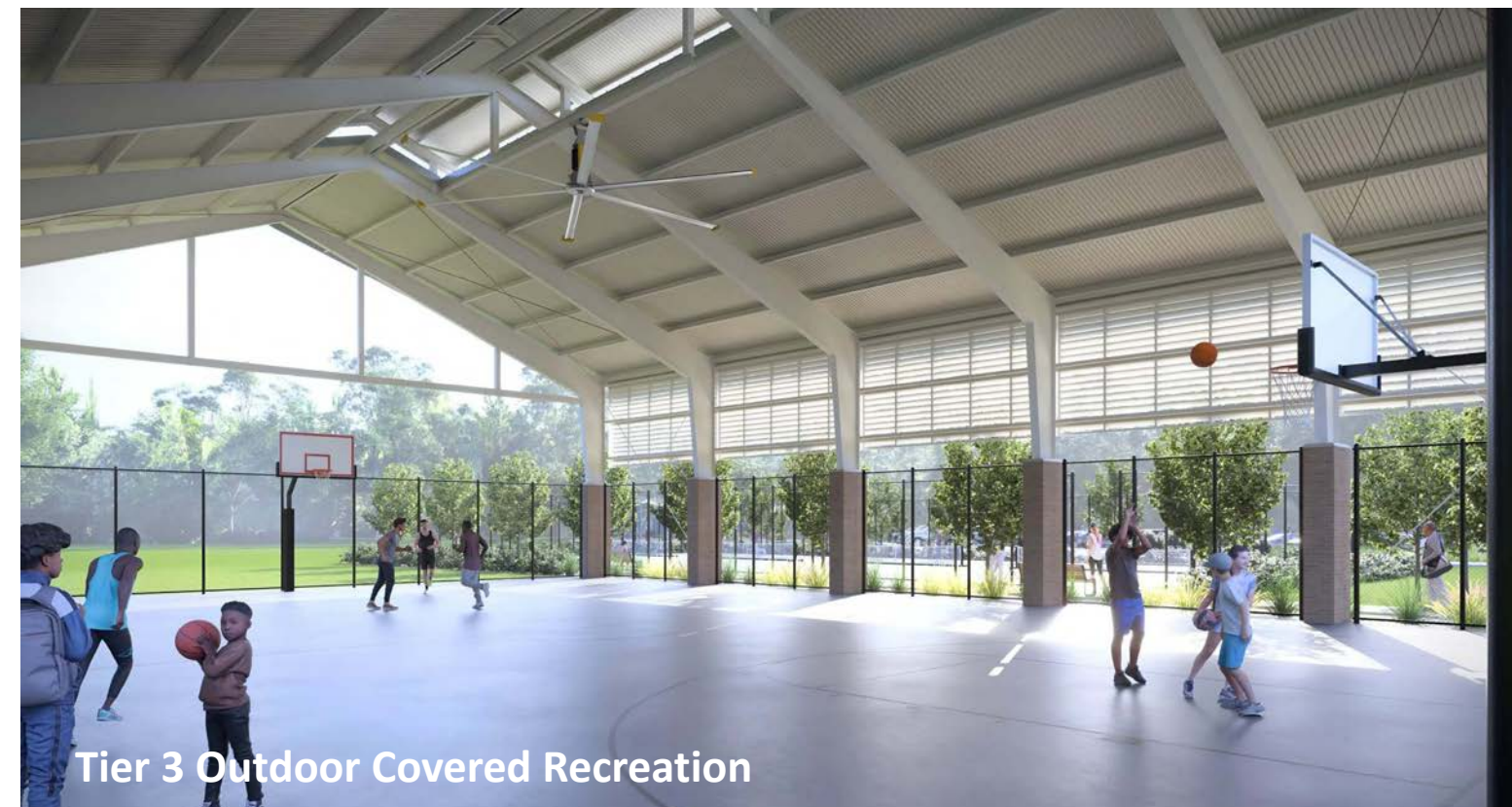
- Milton J. Womack (BREC Admin)
- Flanacher Road Park
- Greenwood Community Park
- Jackson Community Park
- Jefferson Highway Park
- Sharp Road Park



# TIER 3 RECREATION CENTER MODEL: OUTDOOR COVERED AND/OR UNCOVERED COURTS + NEW RESTROOMS

## Tier 3 Recreation Centers

- Alaska Street Park
- Church Street Park
- Drusilla Lane Park
- Flannery Road Park
- Kerr Warren Park
- Longfellow Park
- North Street Park
- Pride Park
- Red Oaks Park
- Sharon Hills Park



### Recreation Center Partnerships

- Howell Community Park
- Perkins Road Community Park
- Terrace Street Park
- Scotlandville Parkway – Exxon Mobil YMCA

### Recreation Centers Convert to Special-Use

- Farr Park - Equestrian
- Webb Memorial Park - Golf

### Recreation Centers Set For Removal

- Jefferson Highway Park– Cove Building
- North 14<sup>th</sup> Street Park – Move Programs to Memorial Safe Room
- Sports Academy – Move Programs to Memorial Safe Room
- Belfair Park - Exploring Partnership opportunity
- Blueberry Street Park

# RECREATION CENTER TRANSITION PLAN - TENTATIVE TIMELINE

|                                       | City  | BREC_PARK                                    | Existing Building Type | Study To Repurpose | Propose Rec. Center Tier | 2026 |    |    |    | 2027 |    |    |    | 2028 |    |    |    | 2029   |
|---------------------------------------|-------|--|------------------------|--------------------|--------------------------|------|----|----|----|------|----|----|----|------|----|----|----|--------|
|                                       |       |  |                        |                    |                          | Q1   | Q2 | Q3 | Q4 | Q1   | Q2 | Q3 | Q4 | Q1   | Q2 | Q3 | Q4 | Beyond |
| <b>Baton Rouge Recreation Centers</b> |       |  |                        |                    |                          |      |    |    |    |      |    |    |    |      |    |    |    |        |
| 1                                     | 1 -BR | Memorial Park                                | New - Safe room        | Yes                | New Safe Room            |      |    |    |    |      |    |    |    |      |    |    |    |        |
| 2                                     | 1 -BR | Cadillac Street Park (Transitional Tier 0/1) | Recreation_Center_A    | Yes                | Tier 1                   |      |    |    |    |      |    |    |    |      |    |    |    |        |
| 3                                     | 1 -BR | Tickie Saia Memorial Park                    | Community_Center_C     | Yes                | Tier 2                   |      |    |    |    |      |    |    |    |      |    |    |    |        |
| 4                                     | 1 -BR | Kerr Warren Park                             | Recreation_Center_A    | Yes                | Tier 3                   |      |    |    |    |      |    |    |    |      |    |    |    |        |
| 5                                     | 1 -BR | Expressway Park                              | Recreation_Center_A    | Yes                | Tier 1                   |      |    |    |    |      |    |    |    |      |    |    |    |        |
| 6                                     | 1 -BR | Monte Sano Park                              | Recreation_Center_A    | Yes                | Tier 1                   |      |    |    |    |      |    |    |    |      |    |    |    |        |
| 7                                     | 1 -BR | City-Brooks Community Park (Tier 2 w/pool)   | New                    | Yes                | Tier 2                   |      |    |    |    |      |    |    |    |      |    |    |    |        |
| 8                                     | 1 -BR | Mayfair Park (Transitional Tier 0/2)         | Recreation_Center_B    | Yes                | Tier 2                   |      |    |    |    |      |    |    |    |      |    |    |    |        |
| 9                                     | 1 -BR | Longfellow Park                              | Recreation_Center_A    | Yes                | Tier 3                   |      |    |    |    |      |    |    |    |      |    |    |    |        |
| 10                                    | 1 -BR | Perkins Road Community Park                  | Community_Center       | Yes                | Tier 2                   |      |    |    |    |      |    |    |    |      |    |    |    |        |
| 11                                    | 1 -BR | Flannery Road Park                           | Recreation_Center_A    | Yes                | Tier 3                   |      |    |    |    |      |    |    |    |      |    |    |    |        |
| 12                                    | 1 -BR | Alaska Street Park                           | Recreation_Center_A    | Yes                | Tier 3                   |      |    |    |    |      |    |    |    |      |    |    |    |        |
| 13                                    | 1 -BR | Nairn Drive Park (Transitional Tier 0/2)     | Recreation_Center_A    | Yes                | Tier 2                   |      |    |    |    |      |    |    |    |      |    |    |    |        |
| 14                                    | 1 -BR | Kernan Avenue Park                           | Recreation_Center_B    | Yes                | Tier 1                   |      |    |    |    |      |    |    |    |      |    |    |    |        |
| 15                                    | 1 -BR | North Street Park                            | Recreation_Center_A    | Yes                | Tier 3                   |      |    |    |    |      |    |    |    |      |    |    |    |        |
| 16                                    | 1 -BR | Mills Avenue Park                            | Recreation_Center_A    | Yes                | Tier 2                   |      |    |    |    |      |    |    |    |      |    |    |    |        |
| 17                                    | 1 -BR | Cedarcrest Park (no Airnasium)               | Community_Center_C     | Yes                | Tier 2                   |      |    |    |    |      |    |    |    |      |    |    |    |        |
| 18                                    | 1 -BR | Independence Community Park                  | Recreation_Center_A    | Yes                | Tier 1                   |      |    |    |    |      |    |    |    |      |    |    |    |        |
| 19                                    | 1 -BR | Red Oaks Park                                | Community_Center_C     | Yes                | Tier 3                   |      |    |    |    |      |    |    |    |      |    |    |    |        |
| 20                                    | 1 -BR | Drusilla Lane Park (Pickleball Airnasium)    | Community_Center_C     | Yes                | Tier 3 (pickleball)      |      |    |    |    |      |    |    |    |      |    |    |    |        |

# RECREATION CENTER TRANSITION PLAN - TENTATIVE TIMELINE

|                                       | City  | BREC_PARK   | Existing Building Type | Study To Repurpose | Propose Rec. Center Tier       | 2026 |    |    |    | 2027 |    |    |    | 2028 |    |    |    | 2029   |
|---------------------------------------|-------|---|------------------------|--------------------|--------------------------------|------|----|----|----|------|----|----|----|------|----|----|----|--------|
|                                       |       |   |                        |                    |                                | Q1   | Q2 | Q3 | Q4 | Q1   | Q2 | Q3 | Q4 | Q1   | Q2 | Q3 | Q4 | Beyond |
| <b>Baton Rouge Recreation Centers</b> |       |   |                        |                    |                                |      |    |    |    |      |    |    |    |      |    |    |    |        |
| 21                                    | 1 -BR | North 14th  | Recreation_Center_B    | Obsolete           | Obsolete (Memorial SR)         |      |    |    |    |      |    |    |    |      |    |    |    |        |
| 22                                    | 1 -BR | Sports Academy                                      | Recreation_Center_B    | Obsolete           | Obsolete (Memorial SR)         |      |    |    |    |      |    |    |    |      |    |    |    |        |
| 23                                    | 1 -BR | Belfair Park  | Community_Center_C     | Obsolete           | Obsolete                       |      |    |    |    |      |    |    |    |      |    |    |    |        |
| 24                                    | 1 -BR | Blueberry Street Park                               | Community_Center_C     | Obsolete           | Obsolete (Partnership)         |      |    |    |    |      |    |    |    |      |    |    |    |        |
| 25                                    | 1 -BR | Terrace Street Park                                 | Community_Center_C     | Leave As           | Partnership (Review Agreement) |      |    |    |    |      |    |    |    |      |    |    |    |        |
| 26                                    | 1 -BR | Howell Community Park                               | Community_Center_C     | Leave As           | Existing Tier 1                |      |    |    |    |      |    |    |    |      |    |    |    |        |
| 27                                    | 1 -BR | Milton Womack Park                                  | Community_Center_C     | Leave As           | Existing Tier 2                |      |    |    |    |      |    |    |    |      |    |    |    |        |
| 28                                    | 1 -BR | Perkins Road Community Park (Review Partnership)    | Recreation_Center_A    | Leave As           | Partnership (Review Agreement) |      |    |    |    |      |    |    |    |      |    |    |    |        |
| 29                                    | 1 -BR | Greenwood Community Park                            | Community_Center_C     | Leave As           | Existing Tier 2                |      |    |    |    |      |    |    |    |      |    |    |    |        |
| 30                                    | 1 -BR | Forest Community Park                               | Recreation_Center_A    | Leave As           | Existing Tier 1                |      |    |    |    |      |    |    |    |      |    |    |    |        |
| 31                                    | 1 -BR | Gus Young Park                                      | Recreation_Center_A    | Leave As           | Existing Tier 1                |      |    |    |    |      |    |    |    |      |    |    |    |        |
| 32                                    | 1 -BR | Anna T. Jordan Community Park                       | Recreation_Center_A    | Leave As           | Existing Tier 1                |      |    |    |    |      |    |    |    |      |    |    |    |        |
| 33                                    | 1 -BR | Scotlandville Parkway                               | Recreation_Center_A    | Leave As           | Partnership (Review Agreement) |      |    |    |    |      |    |    |    |      |    |    |    |        |
| 34                                    | 1 -BR | Sharp Road Park                                     | Community_Center_C     | Leave As           | Existing Tier 2                |      |    |    |    |      |    |    |    |      |    |    |    |        |
| 35                                    | 1 -BR | North Sherwood Forest Community Pk                  | Community_Center_C     | Leave As           | Existing Tier 1                |      |    |    |    |      |    |    |    |      |    |    |    |        |
| 36                                    | 1 -BR | Webb Memorial Park                                  | Community_Center_C     | Leave As           | Existing Tier 2                |      |    |    |    |      |    |    |    |      |    |    |    |        |
| 37                                    | 1 -BR | Jefferson Highway Park                              | Community_Center_C     | Leave As           | Existing Tier 2                |      |    |    |    |      |    |    |    |      |    |    |    |        |
| 38                                    | 1 -BR | Jefferson Highway Park (small building only "cove") | Community_Center_C     | Demo               | Demo                           |      |    |    |    |      |    |    |    |      |    |    |    |        |

# RECREATION CENTER TRANSITION PLAN - TENTATIVE TIMELINE

|                                      | City        | BREC_PARK                                      | Existing Building Type | Study To Repurpose | Propose Rec. Center Tier    | 2026 |    |    |    | 2027 |    |    |    | 2028 |    |    |    | 2029   |
|--------------------------------------|-------------|--|------------------------|--------------------|-----------------------------|------|----|----|----|------|----|----|----|------|----|----|----|--------|
|                                      |             |  |                        |                    |                             | Q1   | Q2 | Q3 | Q4 | Q1   | Q2 | Q3 | Q4 | Q1   | Q2 | Q3 | Q4 | Beyond |
| <b>St. George Recreation Centers</b> |             |  |                        |                    |                             |      |    |    |    |      |    |    |    |      |    |    |    |        |
| 39                                   | 2 - St. G   | Airline Community Park                         | New - Safe room        | Yes                | New Safe Room               |      |    |    |    |      |    |    |    |      |    |    |    |        |
| 40                                   | 2 - St G    | Cedar Ridge Drive Park (Transitional Tier 0/2) | Recreation_Center_A    | Yes                | Tier 2                      |      |    |    |    |      |    |    |    |      |    |    |    |        |
| 41                                   | 2 - St G    | Baringer Road Park                             | Community_Center_C     | Yes                | Tier 2                      |      |    |    |    |      |    |    |    |      |    |    |    |        |
| 42                                   | 2 - St G    | Antioch Boulevard Park                         | Recreation_Center_A    | Leave As           | Existing Tier 1             |      |    |    |    |      |    |    |    |      |    |    |    |        |
| 43                                   | 2 - St G    | Highland Road Community Park                   | Recreation_Center_A    | Leave As           | Existing Tier 1             |      |    |    |    |      |    |    |    |      |    |    |    |        |
| <b>Central Recreation Centers</b>    |             |  |                        |                    |                             |      |    |    |    |      |    |    |    |      |    |    |    |        |
| 44                                   | 3- Central  | Jackson Community Park                         | Community_Center_C     | Leave As           | Existing Tier 2             |      |    |    |    |      |    |    |    |      |    |    |    |        |
| 45                                   | 3- Central  | Lovett Road Park                               | Recreation_Center_A    | Leave As           | Existing Tier 1             |      |    |    |    |      |    |    |    |      |    |    |    |        |
| <b>Baker Recreation Centers</b>      |             |  |                        |                    |                             |      |    |    |    |      |    |    |    |      |    |    |    |        |
| 46                                   | 4 - Baker   | T. D. Bickham, Jr. Park                        | Recreation_Center_A    | Yes                | Tier 2                      |      |    |    |    |      |    |    |    |      |    |    |    |        |
| 47                                   | 4 - Baker   | Baker Recreation Center                        | Recreation_Center_A    | Leave As           | Existing Tier 1             |      |    |    |    |      |    |    |    |      |    |    |    |        |
| <b>Zachary Recreation Centers</b>    |             |  |                        |                    |                             |      |    |    |    |      |    |    |    |      |    |    |    |        |
| 48                                   | 5 - Zachary | Plank Road Park                                | Recreation_Center_A    | Yes                | Tier 2                      |      |    |    |    |      |    |    |    |      |    |    |    |        |
| 49                                   | 5 - Zachary | Zachary Community Park                         | Community_Center_C     | Yes                | Tier 1                      |      |    |    |    |      |    |    |    |      |    |    |    |        |
| 50                                   | 5 - Zachary | Church Street Park                             | Recreation_Center_A    | Yes                | Tier 3 after Zachary Tier 1 |      |    |    |    |      |    |    |    |      |    |    |    |        |

# RECREATION CENTER TRANSITION PLAN - TENTATIVE TIMELINE

|  | City         | BREC_PARK                                    | Existing Building Type | Study To Repurpose | Propose Rec. Center Tier | 2026 |        |        |        | 2027   |        |        |        | 2028   |        |        |       | 2029   |
|--|--------------|--|------------------------|--------------------|--------------------------|------|--------|--------|--------|--------|--------|--------|--------|--------|--------|--------|-------|--------|
|  |              |  |                        |                    |                          | Q1   | Q2     | Q3     | Q4     | Q1     | Q2     | Q3     | Q4     | Q1     | Q2     | Q3     | Q4    | Beyond |
| <b>Unincorporated Recreation Centers</b> |              |  |                        |                    |                          |      |        |        |        |        |        |        |        |        |        |        |       |        |
| 51                                       | 6 - Unincorp | Hartley/Vey Gardere (+ football field)       | New                    | Yes                | Tier 2                   |      | Yellow | Yellow | Yellow | Yellow | Green  | Green  | Green  | Green  |        |        |       |        |
| 52                                       | 6 - Unincorp | Reames Road Park (Transitional Tier 0/1)     | Recreation_Center_B    | Yes                | Tier 1                   |      | Yellow | Yellow | Yellow | Yellow | Green  | Green  | Green  | Green  |        |        |       |        |
| 53                                       | 6 - Unincorp | Pride Park                                   | Community_Center_C     | Yes                | Tier 3                   |      |        |        | Yellow | Yellow | Yellow | Green  | Green  | Green  |        |        |       |        |
| 54                                       | 6 - Unincorp | Sharon Hills Park                            | Recreation_Center_B    | Yes                | Tier 3                   |      |        |        |        |        |        | Yellow | Yellow | Yellow | Green  | Green  | Green |        |
| 55                                       | 6 - Unincorp | Ben Burge Park(Transitional Tier 0/1)        | Recreation_Center_A    | Yes                | Tier 1                   |      |        |        |        |        |        |        |        | Yellow | Yellow | Yellow | Green |        |
| 56                                       | 6 - Unincorp | Alsen Park                                   | Recreation_Center_A    | Yes                | Tier 2                   |      |        |        |        |        |        |        |        | Yellow | Yellow | Yellow | Green |        |
| 57                                       | 6 - Unincorp | Maplewood Drive Park (Transitional Tier 0/2) | Recreation_Center_A    | Yes                | Tier 2                   |      |        |        |        |        |        |        |        |        |        |        | Green |        |
| 58                                       | 6 - Unincorp | Kathy Drive Park                             | Recreation_Center_A    | Yes                | Tier 2                   |      |        |        |        |        |        |        |        |        |        |        | Green |        |
| 59                                       | 6 - Unincorp | Hamilton Avenue Park (Transitional Tier 0/2) | Recreation_Center_A    | Yes                | Tier 2                   |      |        |        |        |        |        |        |        |        |        |        | Green |        |
| 60                                       | 6 - Unincorp | Flanacher Road Park                          | Community_Center_C     | Leave As           | Existing Tier 2          |      |        |        |        |        |        |        |        |        |        |        |       |        |

1. The transition will be gradual through 2034
2. BREC will meet with stakeholders and each community to present the recommended tier designations for the recreation centers in each community and get feedback to confirm recommendations.

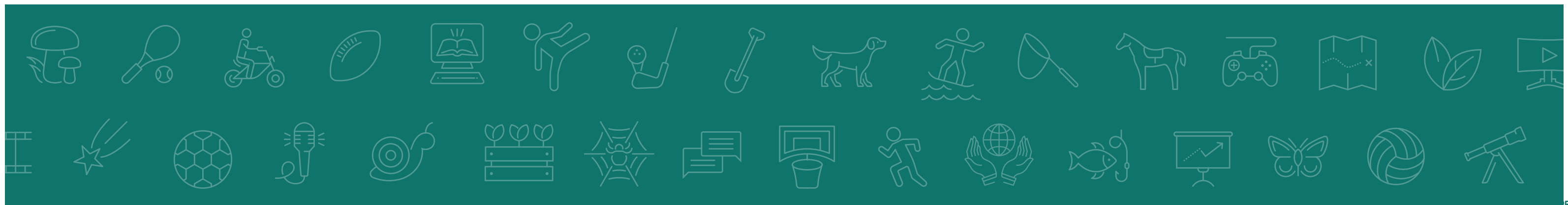


BREC Is Currently studying the park inventory to determine which parks can be designated as obsolete and ultimately sold or removed from the inventory.

This document identifies the parks in several phases of the process including the Obsolete land Game plan, and 43 properties in various stages of the process listed in the contents below. Any final decisions regarding obsolete land status with come as a result of the studies and ultimately commission approval.

## Contents:

- 1. BREC Obsolete Land FAQ, Map, & Status**
- 2. Obsolete land List**
- 3. Obsolete Land Study**
- 4. Obsolete Land Sale Process**
- 5. Reviewed and Appraised Land Support Information**



# BREC OBSOLETE LAND FREQUENTLY ASKED QUESTIONS - MARCH 17, 2026

## Overview

BREC's effort to lessen its inventory and place selected properties on its obsolete land list represents BREC's responsibility as good stewards of public resources, as required by the voter-approved IYP3 plan of 2024. By [retiring](#) low-use sites, BREC can use the funds of these sales to modernize aging facilities and improve the quality of parks and recreation expected of BREC.

## What is the criteria being used to determine a park obsolete?

1. Redundant facility: Two facilities located close together.
2. Very small property: Offers limited recreational value.
3. Non-contiguous park portion: A segment of a park that is not connected to the main property.
4. Inaccessible area: Land that is difficult to reach and has little to no ecological value.
5. Located in a nonresidential area: Or in a place where the local community does not desire service.
6. Low public recreational value: The land does not justify long-term maintenance and operating costs.

## Is BREC legally allowed to sell property that was donated to them?

Some of the properties on the obsolete list were donated to BREC with deed restriction that require BREC to obtain permission from the donors, or their estate, to sell the property. This is the case with parks such as Lafitte Hill, Pawnee Street Park, LeBrent Park, and North 18th Street Park. Some of the donated properties do not have deed restrictions, thereby allowing BREC to sell them as needed.

## Where does the sale money go?

BREC, [by law](#), is required to reinvest **100%** of all revenue received from each sale of its properties into the same service area, and it is not allowed to use those funds for any general fund expenses or projects.

## Why is BREC doing this now?

BREC's IYP3 Strategic Plan (Page 29, Key Themes) recommends fewer, but higher quality facilities. BREC is to identify and responsibly dispose of properties that no longer deliver sufficient public value. This is **not** a new idea—it was built within the 10-year game plan of IYP3 and is now being actively implemented in 2026–2028 to create a more sustainable system. This is best summarized with the IYP3 summary public comment that said, *“removing underutilized assets and repurposing the budget to better maintain and renovate BREC location.”*

## Has BREC ever sold parks before?

This is not the first time BREC has removed properties from its inventory and sold them or returned to previous donors. From 2015-2025, BREC removed 3 parks (Woodstock Park, Starwood Court Park, East Gate Park)

## Which specific parks/parcels are being made obsolete in 2026?

BREC has earmarked a total of 43 properties to study and consider [removing from](#) its inventory. The first batch of parks, which have been [appraised](#), is listed below. The remainder is currently being appraised.

|                                       |             |                 |
|---------------------------------------|-------------|-----------------|
| 1. Industriplex Park — \$2,175,000    | District 11 | St. George      |
| 2. Fortune Addition Park — \$700,000  | District 5  | Baton Rouge     |
| 3. Cortana Place Park — \$650,000     | District 6  | Baton Rouge*    |
| 4. Alexander Street Park — \$550,000  | District 5  | Baton Rouge*    |
| 5. Dover Street Park — \$250,000      | District 5  | Unincorporated  |
| 6. Lanier Drive Park — \$250,000      | District 5  | Unincorporated  |
| 7. Lafitte Hill — \$225,000           | District 3  | St. George*     |
| 8. Blueberry Street Park — \$125,000  | District 6  | Baton Rouge     |
| 9. Belfair Park — \$30,000            | District 7  | Baton Rouge     |
| 10. Sharon Hills outparcel — \$25,000 | District 2  | Unincorporated* |
| 11. Wenonah Street Park — \$6,000     | District 10 | Baton Rouge*    |

\* Parks that have been on the obsolete list since 2012 and are now appraised for sale.

## Where is the complete list of properties on the current obsolete list?

The most updated list is dated **March 17, 2026**, it can be found on BREC's website [here](#).

## This is a surprise move. When did this process begin?

The voter-approved IYP3 Strategic Plan of 2024 called on BREC to lessen its inventory. In October of 2025, BREC presented the recommended obsolete list to the BREC Commission, and the BREC Commission approved the list in December 2025. BREC began receiving appraisals in February 2026, and it is presenting those appraisals to the BREC Planning & Engineering Advisory Committee and BREC Commission in March 2026.

## Will neighborhoods lose green space or access?

Neighborhoods will not lose their green space or access. Each of the parks on the obsolete list has at least one active BREC park or alternative green space within reasonable walking/driving distance. BREC analyzed usage data for each property as well as the six criteria to declare a property obsolete and include it on the list.

# BREC OBSOLETE LAND - WHAT IS THE PURCHASING PROCESS?

The complete process is as follows:

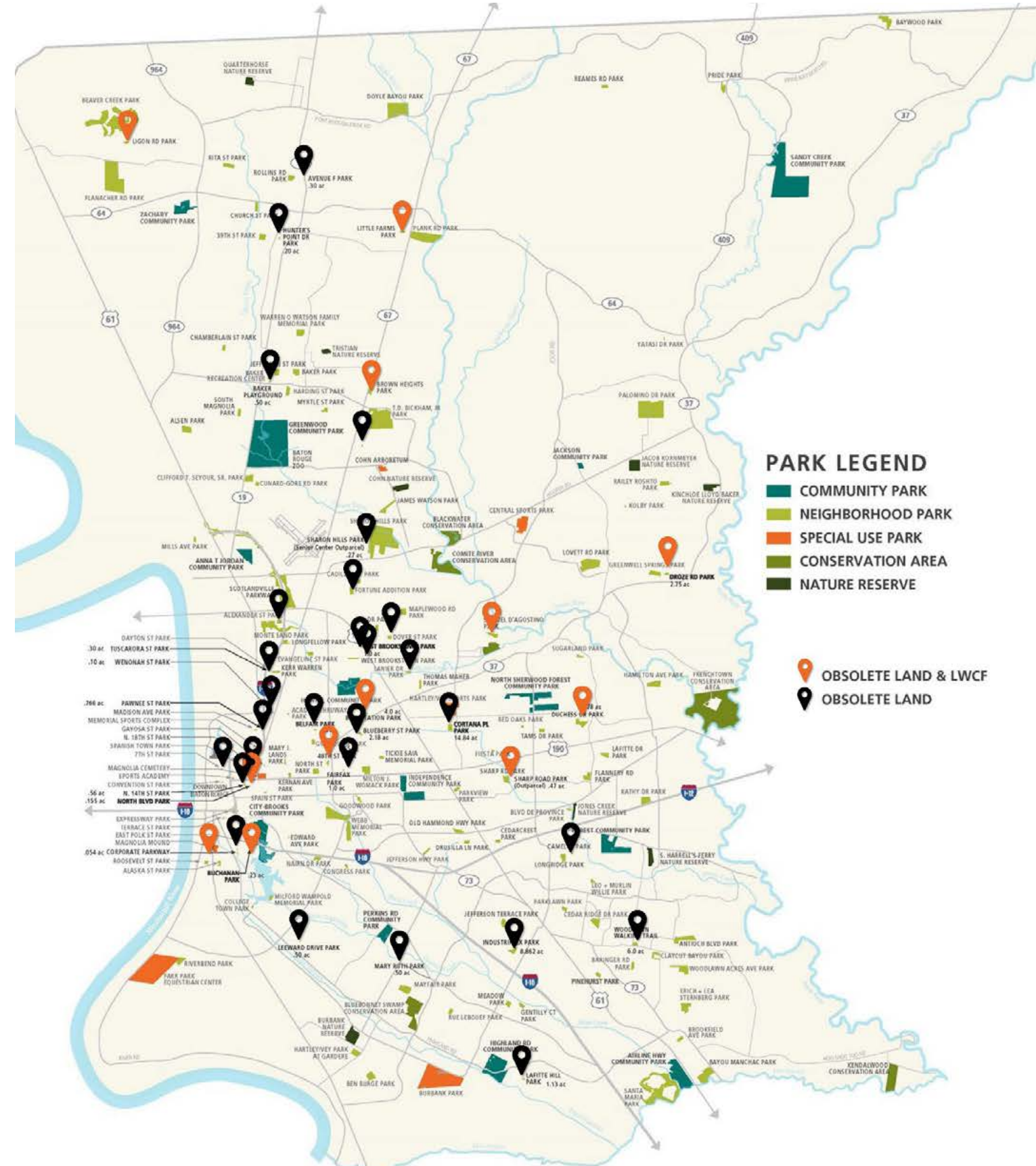
1. Present the recommended obsolete land list to BREC Commission
2. Receive approval from BREC Commission to proceed with appraisals
3. Receive appraisals
4. Present appraised properties to the BREC Planning & Engineering Advisory Committee
5. Present appraised properties to the BREC Commission
6. Obtain resolution from BREC Commission to proceed to sell properties
7. Start the ordinance and notify the public with a 15-day period
8. Present the BREC Commission with responses and interested inquiries
9. Wait 10-days to begin selling properties
10. Sell the properties by auction, competitive bids or negotiated sale
11. Advertise the available properties for 30 days
12. Approve the sale of each individual property
13. File the conveyance and Parish Public records

## Is there a process that allows reversal of any property to remove from the obsolete list?

The policy allows reversal, and removal of any park from the obsolete land list, with any new data that shows significant usage and value. If you have any information that could assist in the reversal and removal of properties from the obsolete list, please contact Brett Wallace at 225-273-6405 x1506.

## Do you have a map of all your parks, and which are on the obsolete list?

See the map to the right.->



\***Land and Water Conservation Fund (LWCF):** Denotes federal funds associated with the park. This adds additional requirements in order to be able to remove a park from service.

## **December 2025: Presented List of Obsolete Land Properties to the Commission**

1. Included properties identified as far back as 2012 and recently identified properties
2. We have successfully moved Industriplex through this process, it is currently advertised for sale.

## **Properties Previously removed from Service:**

1. 17th Street Park (Baton Rouge)
2. Highland Creek (Baton Rouge)
3. Lafayette (Baton Rouge)
4. Nunnally Farms (Central)
5. Sharlo Terrace (Baton Rouge)
6. Saint Jean (Baton Rouge)
7. S. 15th Street (Baton Rouge)
8. Eastgate (Baton Rouge)
9. Terrace Street (Baton Rouge)
10. Woodstock (Unincorporated)
11. Starwood Court (Unincorporated)
12. Lafitte Hill (1 lot)(Unincorporated)

# OBSOLETE LAND: READY FOR SALE OR RETURN

## Next Steps:

- Proceed with the Obsolete Land Sale Process As Applicable
- Return Properties to Owner Agencies

## Obsolete Land Criteria:

1. **Redundant facility:** Two facilities located close together.
2. **Very small property:** Offers limited recreational value.
3. **Non-contiguous park portion:** A segment of a park that is not connected to the main property.
4. **Inaccessible area:** Land that is difficult to reach and has little to no ecological value.
5. **Located in a nonresidential area:** Or in a place where the local community does not desire service.
6. **Low public value:** The land does not justify long-term maintenance and operating costs.

| #   | Park Name                   | City       | Metro Council Dist. | Size  | Amount      | Briefly Describe                                       | Next Step                   | Approved for Disposal | Obsolete Criteria Ref | Q1 '26 | Q2 '26 | Q3 '26 | Q4 '26 | Q1 '27 | Q2 '27 | Q3 '27 | Q4 '27 | 2028 |
|---|-----------------------------|------------|---------------------|-------|-------------|--|-----------------------------|-----------------------|-----------------------|--------|--------|--------|--------|--------|--------|--------|--------|------|
| <b>CATEGORY 1 - APPRAISED AND READY TO SELL - \$4,986,000</b>                             |                             |            |                     |       |             |  |                             |                       |                       |        |        |        |        |        |        |        |        |      |
| 1   | Industriplex Park           | St. George | 11                  | 8.86  | \$2,175,000 | Advertising for Public Bid                             | Sale                        | Yes                   | 6                     | x      |        |        |        |        |        |        |        |      |
| 2   | Fortune Addition Park       | BR         | 5                   | 10.18 | \$700,000   | Resolution to the commission needed                    | Commission Approval to Sell | No                    | 1                     |        |        | x      |        |        |        |        |        |      |
| 3   | Dover Street Park           | UNCP       | 5                   | 4     | \$250,000   | Resolution to the commission needed                    | Commission Approval to Sell | No                    | 1                     |        |        | x      |        |        |        |        |        |      |
| 4   | Cortana Place Park          | BR         | 6                   | 14.84 | \$650,000   | Advertising for Public Bid                             | Sale                        | Yes                   | 4, 5, 6               | x      |        |        |        |        |        |        |        |      |
| 5   | Alexander Street Park       | BR         | 5                   | 8.83  | \$550,000   | Resolution to the commission needed                    | Commission Approval to Sell | No                    | 5, 6                  |        |        | x      |        |        |        |        |        |      |
| 6   | Lanier Drive Park           | UNCP       | 5                   | 3.2   | \$250,000   | Resolution to the commission needed                    | Commission Approval to Sell | No                    | 1                     |        |        | x      |        |        |        |        |        |      |
| 7   | Lafite Hill Park            | St. George | 3                   | 1.13  | \$225,000   | Advertising for Public Bid                             | Sale                        | Yes                   | 2, 6                  | x      | x      |        |        |        |        |        |        |      |
| 8   | Blueberry Street Park       | BR         | 6                   | 2.18  | \$125,000   | Resolution to the commission needed                    | Commission Approval to Sell | No                    | 1, 2, 6               |        |        | x      |        |        |        |        |        |      |
| 9   | Belfair Park                | BR         | 7                   | 0.93  | \$30,000    | Resolution to the commission needed                    | Commission Approval to Sell | No                    | 1, 2, 6               |        |        | x      |        |        |        |        |        |      |
| 10  | Sharon Hills Park Outparcel | UNCP       | 2                   | 0.27  | \$25,000    | Resolution to the commission needed                    | Commission Approval to Sell | No                    | 2, 3, 6               |        |        | x      |        |        |        |        |        |      |
| 11  | Wenonah Street Park         | BR         | 10                  | 0.1   | \$6,000     | Resolution to the commission needed                    | Commission Approval to Sell | No                    | 2, 6                  |        |        | x      |        |        |        |        |        |      |
| <b>CATEGORY 2 - REVIEWED AND READY TO BE RETURNED TO OWNER AGENCY OR APPROPRIATE CITY</b> |                             |            |                     |       |             |  |                             |                       |                       |        |        |        |        |        |        |        |        |      |
| 12  | East Brookstown Park        | BR         | 7                   | 1     |             | Discussing with the Mayor                              | Return to Owner             | No                    | 1, 2, 6               |        |        | x      |        |        |        |        |        |      |
| 13  | Tuscarora Street Park       | BR         | 10                  | 0.3   |             | Discussing with the Mayor                              | Return to Owner             | No                    | 1, 2, 6               |        |        | x      |        |        |        |        |        |      |
| 14  | Baker Playground (MLK)      | Baker      | 2                   | 0.5   |             | Discussing with the Mayor (30 Day Notice req.)         | Return to Owner             | No                    | 1, 2                  |        |        | x      |        |        |        |        |        |      |
| 15  | Woodlawn Walking Trail      | St. George | 9                   | 6     |             | Discussing with the School Board (120 Day notice req.) | Return to Owner             | No                    | 6                     |        |        |        | x      |        |        |        |        |      |
| 16  | Dayton Street Park          | BR         | 10                  | 0.5   |             | Discussing with the Mayor                              | Return to Owner             | No                    | 1,6                   |        |        | x      |        |        |        |        |        |      |

# OBSOLETE LAND: LWCF RESTRICTIONS

## Next Steps:

- Resolve LWCF Restrictions
- Take Next Steps to Sell or Remove From Inventory

## Obsolete Land Criteria:

1. **Redundant facility:** Two facilities located close together.
2. **Very small property:** Offers limited recreational value.
3. **Non-contiguous park portion:** A segment of a park that is not connected to the main property.
4. **Inaccessible area:** Land that is difficult to reach and has little to no ecological value.
5. **Located in a nonresidential area:** Or in a place where the local community does not desire service.
6. **Low public value:** The land does not justify long-term maintenance and operating costs.

| #  | Park Name                    | City    | Metro Council Dist. | Size  | Amount | Briefly Describe                                  | Next Step                            | Approved for Disposal | Obsolete Criteria Ref | Q1 '26 | Q2 '26 | Q3 '26 | Q4 '26 | Q1 '27 | Q2 '27 | Q3 '27 | Q4 '27 | 2028 |
|--|------------------------------|---------|---------------------|-------|--------|---|--------------------------------------|-----------------------|-----------------------|--------|--------|--------|--------|--------|--------|--------|--------|------|
| <b>CATEGORY 3 – REGULATED BY LWCF &amp; BREC HAS TO RESOLVE RESTRICTIONS</b> |                              |         |                     |       |        |   |                                      |                       |                       |        |        |        |        |        |        |        |        |      |
| 17   | Droze Road Park              | Central | 4                   | 2.75  |        | LWFC Restriction – Working on resolution approach | Resolve LWCF                         | No                    | 1, 6                  |        |        |        |        |        | x      |        |        |      |
| 18   | Buchanan Park                | BR      | 10                  | 0.23  |        | LWFC Restriction – Working on resolution approach | Resolve LWCF                         | No                    | 1,2,6                 |        |        |        |        |        | x      |        |        |      |
| 19   | Duchess Drive Park           | BR      | 6                   | 20.78 |        | LWFC Restriction – Working on resolution approach | Resolve LWCF                         | No                    | .....                 |        |        |        |        |        | x      |        |        |      |
| 20   | 48 <sup>th</sup> Street Park | BR      | 7                   | 2.55  |        | LWFC Restriction – Working on resolution approach | Resolve LWCF                         | No                    | 1, 6                  |        |        |        |        |        | x      |        |        |      |
| 21   | North Blvd Park              | BR      | 10                  | 0.15  |        | LWFC Restriction – Working on resolution approach | Resolve LWCF                         | No                    | 2, 6                  |        |        |        |        |        | x      |        |        |      |
| 22   | Bird Station                 | BR      | 7                   | 4     |        | LWFC Restriction – Working on resolution approach | Resolve LWCF; Resolve with Landowner | No                    | 6                     |        |        |        |        |        | x      |        |        |      |
| 23   | Roosevelt Street Park        | BR      | 10                  | 3.3   |        | LWFC Restriction – Working on resolution approach | Resolve LWCF                         | No                    | 1                     |        |        |        |        |        | x      |        |        |      |
| 24   | Samuel D'Agostino Park       | UNCP    | 5                   | 10.33 |        | LWFC Restriction – Working on resolution approach | Resolve LWCF                         | No                    | 6                     |        |        |        |        |        | x      |        |        |      |
| 25   | Ligon Road Park              | UNCP    | 1                   | 2.68  |        | LWFC Restriction – Working on resolution approach | Resolve LWCF                         | No                    | 1                     |        |        |        |        |        | x      |        |        |      |
| 26   | Brown Heights Park           | UNCP    | 2                   | 6.7   |        | LWFC Restriction – Working on resolution approach | Resolve LWCF                         | No                    | 6                     |        |        |        |        |        | x      |        |        |      |
| 27   | Little Farms Park            | Zachary | 1                   | 2.3   |        | LWFC Restriction – Working on resolution approach | Resolve LWCF                         | No                    | 1                     |        |        |        |        |        | x      |        |        |      |

# OBSOLETE LAND: DEED RESTRICTIONS + ADDITIONAL TO BE STUDIED

## Next Steps:

- Complete a study of Each Site
- Resolve Deed Restrictions
- Take Next Steps to Sell or Remove From Inventory

## Obsolete Land Criteria:

1. **Redundant facility:** Two facilities located close together.
2. **Very small property:** Offers limited recreational value.
3. **Non-contiguous park portion:** A segment of a park that is not connected to the main property.
4. **Inaccessible area:** Land that is difficult to reach and has little to no ecological value.
5. **Located in a nonresidential area:** Or in a place where the local community does not desire service.
6. **Low public value:** The land does not justify long-term maintenance and operating costs.

| #  | Park Name                          | City    | Metro Council Dist. | Size  | Amount | Briefly Describe                                 | Next Step                              | Approved for Disposal | Obsolete Criteria Ref | Q1 '26 | Q2 '26 | Q3 '26 | Q4 '26 | Q1 '27 | Q2 '27 | Q3 '27 | Q4 '27 | 2028 |
|--|------------------------------------|---------|---------------------|-------|--------|--|--|-----------------------|-----------------------|--------|--------|--------|--------|--------|--------|--------|--------|------|
| <b>CATEGORY 4 – DONATION PROPERTIES THAT HAVE TO REMAIN A PARK &amp; RESEARCH</b>      |                                    |         |                     |       |        |  |  |                       |                       |        |        |        |        |        |        |        |        |      |
| 28   | Mary Ruth Park                     | BR      | 12                  | 0.5   |        | Deed Restricted – Working on resolution approach | Resolve Deed Restrictions              | No                    | 2, 6                  |        |        |        | x      |        |        |        |        |      |
| 29   | Pawnee Street Park                 | BR      | 10                  | 0.766 |        | Deed Restricted – Working on resolution approach | Resolve Deed Restrictions              | No                    | 1, 6                  |        |        |        | x      |        |        |        |        |      |
| 30   | Seventh Street Park                | BR      | 10                  | 0.3   |        | Deed Restricted – Working on resolution approach | Resolve Deed Restrictions              | No                    | 1, 6                  |        |        |        | x      |        |        |        |        |      |
| 31   | North 18 <sup>th</sup> Street Park | BR      | 10                  | 0.99  |        | Deed Restricted – Working on resolution approach | Resolve Deed Restrictions              | No                    | 1                     |        |        |        | x      |        |        |        |        |      |
| 32   | LeBrent Park                       | UNCP    | 2                   | 0.1   |        | Deed Restricted – Working on resolution approach | Resolve Deed Restrictions              | No                    | 2                     |        |        |        | x      |        |        |        |        |      |
| 33   | Avenue F Park                      | Zachary | 1                   | 0.3   |        | Deed Restricted – Working on resolution approach | Resolve Deed Restrictions              | No                    | 2, 6                  |        |        |        | x      |        |        |        |        |      |
| 34   | Hunter's Point Drive Park          | Zachary | 1                   | 0.2   |        | Deed Restricted – Working on resolution approach | Resolve Deed Restrictions              | No                    | 2, 6                  |        |        |        | x      |        |        |        |        |      |
| 35   | Fairfax Park                       | BR      | 6                   | 1     |        | Researching/Clarification                        | Get Clarification on Deed Restrictions | No                    | 2, 6                  |        |        |        | x      |        |        |        |        |      |
| 36   | Corporate Parkway                  | BR      | 10                  | 0.05  |        | Researching/Clarification                        | Get Clarification on Deed Restrictions | No                    | 2,3, 6                |        |        |        | x      |        |        |        |        |      |
| 37   | Sharp Road Park (Out Parcel)       | BR      | 6                   | 0.47  |        | Researching/Clarification                        | Get Clarification on Deed Restrictions | No                    | 2, 3, 6               |        |        |        | x      |        |        |        |        |      |
| 38   | North 14th Street Park             | BR      | 10                  | 0.564 |        | Hold Until Memorial Saferoom is Complete         | Wait for Memorial Safe Room            | No                    | 1, 6                  |        |        |        |        |        |        |        |        | x    |
| 39   | Sports Academy                     | BR      | 10                  | 0.54  |        | Hold Until Memorial Saferoom is Complete         | Wait for Memorial Safe Room            | No                    | 1, 6                  |        |        |        |        |        |        |        |        | x    |
| <b>CATEGORY 5 - OWNED BY CITY, BREC MAINTAINED/DEVELOPED, RETURN TO NEIGHBORS/CITY</b> |                                    |         |                     |       |        |  |  |                       |                       |        |        |        |        |        |        |        |        |      |
| 40   | Camelot Park                       | BR      | 8                   | 0.75  |        | Discussing with the neighbors, HOA, Mayor        | Meet with Neighbors/HOA                | No                    | 1                     |        |        |        | x      |        |        |        |        |      |
| 41   | Edward Avenue                      | BR      | 7                   | 0.3   |        | Discussing with the neighbors, HOA, Mayor        | Meet with Neighbors/HOA                | No                    | 2,6                   |        |        |        | x      |        |        |        |        |      |
| 42   | Leeward Drive Park                 | BR      | 12                  | 0.05  |        | Discussing with the neighbors, HOA, Mayor        | Meet with Neighbors/HOA                | No                    | 2                     |        |        |        | x      |        |        |        |        |      |

# APPENDIX A: CURRENT LARGE / SEALED BID CONSTRUCTION PROJECTS - FINANCIAL STATUS (PRIOR MONTH END)

| Name  | Original Contract Total             | Current Approved Change Order Total | Revised Contract Total * | Expense To Date (including Retainage) | Project Start Date | # of Contract Days | % Complete | # of Change Order Days (+/-) | Current Contract End Date** | Change Order Requests - UNDER REVIEW | Anticipated Contract Total- UNDER REVIEW | Pay Apps Received UNDER REVIEW | P&E's Current Estimated Project Completion | Project Acceptance Date | Lien Period | Status Update  |
|---|-------------------------------------|-------------------------------------|--------------------------|---------------------------------------|--------------------|--------------------|------------|------------------------------|-----------------------------|--------------------------------------|--|--------------------------------|--|-------------------------|-------------|--|
| Howell Rec Center & Pool                            | \$7,495,000                         | \$748,891                           | \$8,243,891              | \$8,113,233                           | 11/17/2020         | 390                | 98.4%      | 316                          | 10/24/2022                  | \$0                                  | \$8,243,891                              | \$0                            | Substantially Complete                     | 4/30/2024               | -           | • Final contract closeout PENDING  |
| Flanacher Park Recreation Building and HVAC Repairs | \$329,260                           | \$45,303                            | \$374,563                | \$357,747                             | 8/13/2024          | 270                | 95.5%      | 75                           | 7/24/2025                   | \$0                                  | \$374,563                                | \$35,775                       | Substantially Complete                     | 7/24/2025               | rec'd       | • Clear Lien received<br>• Pending final contract closeout   |
| Highland Tennis                                     | \$1,146,500                         | \$12,551                            | \$1,159,051              | \$937,400                             | 12/16/2024         | 200                | 80.9%      | 61                           | 9/3/2025                    | -\$154,025                           | \$1,005,026                              | \$0                            | Substantially Complete                     | 10/1/2025               | -           | • New Courts Complete<br>• Punchlist items overdue - contract closeout pending   |
| Freedom Heritage Trail (CMAQ Trail)                 | \$5,277,000                         | \$304,173                           | \$5,581,173              | \$5,438,190                           | 9/8/2024           | 250 (working days) | 97.4%      | 69                           | 12/23/2025                  | \$174,306                            | \$5,755,478                              | \$0                            | Substantially Complete                     | 12/22/2025              | -           | • Project nearing final closeout, Federal Grant 80/20  |
| Alsen Park Playground                               | \$376,761                           | -\$33,607                           | \$343,154                | \$343,154                             | 5/7/2025           | 180                | 100.0%     | 30                           | 12/3/2025                   | \$0                                  |  | \$0                            | Substantially Complete                     | 11/11/2025              | rec'd       | • Contractor work Substantially Complete.<br>• Punchlist complete<br>• CCD sitework nearly complete  |
| Cypress Bayou LWI Green Infrastructure              | \$8,012,530                         | -\$977,205                          | \$7,035,325              | \$2,448,795                           | 7/18/2025          | 450                | 34.8%      | 0                            | 10/11/2026                  | \$696,274                            | \$7,731,599                              | \$0                            | Late 2026                                  | -                       | -           | • Dredging and new bank shaping in main lake<br>• Digging lake expansion to the south & new forebay at Lavey Lane<br>• Stockpiling of cut materials and dredge for new landforms<br>• Lake dredging showing large amounts of additional sediment to be removed. <b>Change Order request pending approval</b> |
| Magnolia Mound Historic House HVAC                  | \$330,000                           | \$0                                 | \$330,000                | \$325,050                             | 7/25/2025          | 180                | 98.5%      | 0                            | 1/21/2026                   | \$0                                  | \$330,000                                | \$0                            | Substantially Complete                     | 1/22/2026               | -           | • Contractor work Substantially Complete.<br>• Pending final contract closeout   |
| Drives & Parking Lot Paving (3 Parks)               | \$786,900                           | \$0                                 | \$786,900                | \$532,260                             | 12/1/2025          | 240                | 67.6%      | 0                            | 7/29/2026                   | \$4,254                              | \$791,154                                | \$0                            | Summer 2026                                | -                       | -           | • Work to be scheduled in order:<br>• Anna T. Jordan Community Park - punch list items remaining<br>• Lovett Road Park - Complete<br>• Howell Community Park - Complete  |
| Beaver Creek Culvert Replacement                    | \$159,600                           | \$0                                 | \$159,600                | \$0                                   | 1/12/2026          | 90                 | 0.0%       | 0                            | 4/12/2026                   | \$0                                  | \$159,600                                | \$143,640                      | Spring 2026                                | 3/6/2026                | -           | • Nearly Complete<br>• Punch list items remaining  |
| Highland Tennis Ph 2                                | \$453,000                           | \$0                                 | \$453,000                | \$0                                   | TBD                | 90                 | 0.0%       | 0                            | TBD                         | \$0                                  | \$453,000                                | \$0                            | TBD  | -                       | -           | • Contracting - Notice to Proceed pending  |
| <b>TOTALS:</b>                                      | <b>\$24,366,551</b>                 | <b>\$100,105</b>                    | <b>\$24,466,656</b>      | <b>\$18,495,828</b>                   |                    |                    |            |                              |                             |                                      |  |                                |  |                         |             |  |
|   | <b>Total Change Order Percent †</b> | <b>0.4%</b>                         |                          |                                       |                    |                    |            |                              |                             |                                      |  |                                |  |                         |             |  |

Total Represents the Budgeted Amount for the Project and ALL Change Orders Incurred.  
The Percent Complete is based strictly on the amount paid by BREC to the Contractor to date over the Current Contract Cost.  
The percent complete may not reflect total level of effort or project progress not yet paid to the Contractor.

\*\* Current Contract End Date represents the Original contract end date plus all change orders. There may be change orders that have yet to be processed.  
† Total Change Order percent includes concurrent deductive Change Orders for two (2) projects totaling \$1,011,825. Without these deductive change orders the total percentage is 3.4%

Substantial Completion indicates that the project is ready for use by BREC  
Clear Lien is obtained by the Contractor 45 days after the Substantial Completion is recorded with the EBRP Clerk of Court and indicates that there are no liens on the contractor or project.

# APPENDIX B: NATURAL RESOURCE MANAGEMENT

| Management Activity                     | Park                               | Specific Location                     | Notes   | Partners    |
|---|------------------------------------|---------------------------------------|---|-------------|
| <b>Bioassessment</b>                    |                                    |                                       |   |             |
| Zachary                                 | Quarterhorse Nature Reserve        | Entire park                           | Bioassessment   |             |
| <b>Garden Maintenance</b>               |                                    |                                       |   |             |
| BR                                      | Forest Community Park              | Pollinator Garden                     | Weeded rain and pollinator gardens, potted up some things for Spring Spruce Up                | Green Force |
| <b>Invasive Removal</b>                 |                                    |                                       |   |             |
| Uncp                                    | Bluebonnet Swamp Conservation Area | Meadow                                | Pulled elephant ear, peppervine, and rubus in meadow  | Green Force |
| BR                                      | Howell Community Park              | Pond                                  | Sprayed 8 gallons Tribune on water lettuce  |             |
| BR                                      |                                    |                                       | Raked water lettuce to bank, bagged up 3 full bags plus trash                                 |             |
| BR                                      |                                    | Stream under boardwalk, birding trail | Searched for air potato, found 1 and a couple sprouts   |             |
| <b>Outreach</b>                         |                                    |                                       |   |             |
| Uncp                                    | Sandy Creek Community Park         | Hiking Trail                          | Walk through of trail with Madi for promo video   |             |
| Uncp                                    |                                    | Trails                                | Installed mobile arboretum signs  |             |
| <b>Planting &amp; Plant Maintenance</b> |                                    |                                       |   |             |
| St. George                              | Burbank Park                       | Pond                                  |   |             |
| Central                                 | Central Sports Park                | Pond                                  | Planted 6 baldcypress around pond edge  |             |
| BR                                      | Forest Community Park              | Pond                                  |   |             |
| Baton Rouge                             | Monte Sano Park                    | Northeast corner of park              | Planted ~100 oak spp. And ~180 cypress trees, seeded area with 5lbs pollinator essentials mix |             |
| Central                                 | Palomino Drive Park                | Pond                                  | Planted 5 baldcypress around pond edge  |             |
| Zachary                                 | Zachary Community Park             | Pond                                  | Planted 15 baldcypress around pond edge, flagged  |             |
| BR                                      | Greenwood Community Park           | Bayou                                 | Watered in trees/grasses  |             |
| BR                                      |                                    |                                       | Filled in rills along bayou   |             |
| BR                                      |                                    | Parking lot and bayou                 | Watered in trees/grasses  |             |
| <b>Prescribed Burn</b>                  |                                    |                                       |   |             |
| BR                                      | Howell Community Park              | Grow zones                            | Burned GZs J/9 and G/11a (1.18 acres)   |             |
| <b>Seeding</b>                          |                                    |                                       |   |             |
| Uncp                                    | Greenwood Community Park           | Bayou                                 | Seeded rill 4 and construction paths, watered in seed   |             |
| BR                                      | Howell Community Park              | Grow zones                            | Seeded GZs A/1, B/16, C/15, E/2, G/11a, J/9, and K/8 with mix 192                             |             |
| <b>Trail Maintenance</b>                |                                    |                                       |   |             |
| St. George                              | Bayou Manchac Park                 | Trails                                | Removed fallen tree and trailmaintenance  |             |
| Central                                 | Blackwater Conservation Area       | Trails                                | General trailmaintenance and assessed flooding  |             |
| Uncp                                    | Bluebonnet Swamp Conservation Area | Trails                                | Trailmaintenance, repaired board walk, removed broken siddings, and assesed erosion damage    |             |
| Uncp                                    |                                    |                                       | Trail maintenance   |             |
| Central                                 | Frenchtown Conservation Area       | Amite Overlook and Forest Edge        | Removed down trees along the trail  |             |
| Uncp                                    | Sharon Hills Park                  | Trails                                | General trailmaintenance and assessed flooding  |             |
| <b>Wildlife Management</b>              |                                    |                                       |   |             |
| BR                                      | Milford Wampold                    | Pond                                  | Installed turtle fence along Sanford Ave.   |             |



# APPENDIX C: IYP3 KEY FOCUS AREAS

| Focus Area                      | Item | Task  | Complete | In Progress | IYP3 Recommendations | PROJECTED COMPLETION |      |      |      |
|---------------------------------|------|---|----------|-------------|----------------------|----------------------|------|------|------|
|                                 |      |   |          |             |                      | 2025                 | 2026 | 2027 | 2028 |
| <b>#1 Mission &amp; Focus</b>   |      |   |          |             |                      |                      |      |      |      |
| 1                               | 1.1  | Review and revise BREC's mission statement.   | yes      |             | 23.2                 |                      |      |      |      |
| 1                               | 1.2  | Develop a shared definition of BREC's core services   | yes      |             | 23.2                 |                      |      |      |      |
| 1                               | 1.3  | Use the updated mission statement and core services definition to recalibrate subsidy/revenue generation targets across system.                     | yes      |             | 23.2                 |                      |      |      |      |
| <b>#2 Rec Center Transition</b> |      |   |          |             |                      |                      |      |      |      |
| 2                               | 2.1  | Complete the Recreation Center Transition Plan (including additional community engagement)  | yes      |             | 21.1                 |                      |      |      |      |
| 2                               | 2.2  | Implement a new recreation models communications campaign to increase awareness of the need for change  |          | TRUE        | 21.1                 |                      |      |      |      |
| 2                               | 2.3  | Offline 2-3 recreation centers by end of 2027   | yes      |             | 21.1                 |                      |      |      |      |
| 2                               | 2.4  | Construct 1-2 new outdoor recreation hubs   |          |             | 21.1                 |                      |      |      |      |
| 2                               | 2.5  | Add air conditioning to 1-2 recreation centers  |          | TRUE        | 21.1                 |                      |      |      |      |
| 2                               | 2.6  | Pilot partnership operational models at 1-2 recreation centers.   |          | TRUE        | 21.4                 |                      |      |      |      |
| <b>#3 Supporting BREC Staff</b> |      |   |          |             |                      |                      |      |      |      |
| 3                               | 3.1  | Review and update work order system based on IYP3 principles  | yes      |             | 23.4                 |                      |      |      |      |
| 3                               | 3.2  | Develop a transparent work-order dashboard  | yes      |             | 23.4                 |                      |      |      |      |
| 3                               | 3.3  | Create 3 programs, initiatives, or events to increase community among BREC staff  | yes      |             | 23.3                 |                      |      |      |      |
| 3                               | 3.4  | Implement heat resilience operational policies to increase access to indoor air conditioned spaces and water on hot days for staff who work outside |          |             | 14.5                 |                      |      |      |      |
| 3                               | 3.5  | Develop and implement strategies for active recruitment of key positions  |          | TRUE        | 2.3                  |                      |      |      |      |
| 3                               | 3.6  | Develop a leadership cohort program   |          | TRUE        | 23.5                 |                      |      |      |      |

# APPENDIX C: IYP3 KEY FOCUS AREAS (CONTINUED)

| Focus Area   | Item | Task  | Complete | In Progress | IYP3 Recommendations | PROJECTED COMPLETION |      |      |      |
|--|------|---|----------|-------------|----------------------|----------------------|------|------|------|
|  |      |   |          |             |                      | 2025                 | 2026 | 2027 | 2028 |
| <b>#4 Greenway Funding &amp; Maintenance Models</b>        |      |   |          |             |                      |                      |      |      |      |
| 4  | 4.1  | Test operational models with the City-Brooks Park, Health Loop, and Scotlandville Parkway projects.   |          | TRUE        | 16.3                 |                      |      |      |      |
| 4  | 4.2  | Develop a plan for preferred model(s) future system expansion that addresses funding, ownership, multi-jurisdictional coordination/planning, and maintenance. Begin taking steps to move to the preferred model(s). |          | TRUE        | 16.4                 |                      |      |      |      |
| 4  | 4.3  | Increase private support for greenways, including financial contributions and volunteer hours.  |          | TRUE        | 16.3                 |                      |      |      |      |
| 4  | 4.4  | Build an additional 5 miles of greenway trails.   |          | TRUE        | 16.2                 |                      |      |      |      |
| 4  | 4.5  | Implement safety/security strategies along 3 miles of existing trails.  |          | TRUE        | 8.2                  |                      |      |      |      |
| <b>#5 Safe Park Pilot Program</b>                          |      |   |          |             |                      |                      |      |      |      |
| 5  | 5.1  | Develop a pilot program and design guidelines for park safety and security including a combination of technology/ design strategies and programming.  | yes      | FALSE       | 8.1                  |                      |      |      |      |
| 5  | 5.2  | Test this at 2-3 locations.   | yes      | FALSE       | 8.1                  |                      |      |      |      |
| 5  | 5.3  | Review lessons learned and develop a plan to scale up the program to more locations.  |          | TRUE        | 8.1                  |                      |      |      |      |
| 5  | 5.4  | Continue to invest in safety/security technology and physical improvements across the system.   |          | TRUE        | 8.2                  |                      |      |      |      |
| 5  | 5.5  | Continue to collect data on safety/security incidents and use this information to target safety/security strategies.  |          | TRUE        | 8.2                  |                      |      |      |      |
| 5  | 5.6  | Implement improvements to increase safety for BREC staff.   |          | TRUE        | 8.4                  |                      |      |      |      |
| <b>#6 Mowing Reduction and Reforestation Pilot Program</b> |      |   |          |             |                      |                      |      |      |      |
| 6  | 6.1  | Scale up current efforts and reduce mowing across the system. Aim for a reduction of 50-75 acres, which is about a 3.5% reduction by the end of year 3.   |          | TRUE        | 22.2                 |                      |      |      |      |
| 6  | 6.2  | Update maintenance standards and adjust mowing schedules to 10-14 day cycle where possible.   |          | TRUE        | 22.3                 |                      |      |      |      |
| 6  | 6.3  | Implement “Low Mow May” areas in 10 parks and pair this with marketing campaigns/signage to increase awareness of benefits of low-mow   |          |             | 22.3                 |                      |      |      |      |
| 6  | 6.4  | Implement the obsolete land list including selling or transferring ownership of 50% of the existing list in the next three years.   |          | TRUE        | 22.1                 |                      |      |      |      |
| 6  | 6.5  | Shift 2-3 parks to lower maintenance typologies or add them to the off-line list.   |          | TRUE        | 22.1                 |                      |      |      |      |
| 6  | 6.6  | Reforest 10 acres of parkland.  |          |             | 22.2                 |                      |      |      |      |
| 6  | 6.7  | Complete Natural Resource Inventories of all conservation areas and most nature reserves.   |          | TRUE        | 15.1                 |                      |      |      |      |

# APPENDIX C: IYP3 KEY FOCUS AREAS (CONTINUED)

| Focus Area   | Item | Task  | Complete | In Progress | IYP3 Recommendations | PROJECTED COMPLETION |      |      |      |
|--|------|---|----------|-------------|----------------------|----------------------|------|------|------|
|  |      |   |          |             |                      | 2025                 | 2026 | 2027 | 2028 |
| <b>#7 Alternative Funding</b>                      |      |   |          |             |                      |                      |      |      |      |
| 7  | 7.1  | Evaluate earned revenue opportunities. Adjust prices and expand concessions or other earned revenue in several facilities.  |          | TRUE        | 24.4                 |                      |      |      |      |
| 7  | 7.2  | Expand BREC promotional merchandise. Make it available at some parks/facilities.  |          | TRUE        | 10.8                 |                      |      |      |      |
| 7  | 7.3  | Continue to pursue grant funding and private sector support.  |          | TRUE        | 23.6                 |                      |      |      |      |
| 7  | 7.4  | Explore other opportunities to diversify funding sources (ex. Feasibility of TIF funding in partnership with municipalities, etc.).   |          | TRUE        | 24.3                 |                      |      |      |      |
| 7  | 7.5  | Standardize practices to develop a maintenance, operations, and staffing plan for new capital improvements.   |          | TRUE        | 23.1                 |                      |      |      |      |
| <b>#8 Heat Action Plans</b>                        |      |   |          |             |                      |                      |      |      |      |
| 8  | 8.1  | Form a BREC Heat Team.  |          |             | 14.5                 |                      |      |      |      |
| 8  | 8.2  | Develop the High Heat Day Action Matrix and begin implementing it during heat waves.  |          |             | 14.5                 |                      |      |      |      |
| 8  | 8.3  | Install new cooling features at 5 parks, with a focus on parks in equity zones.   |          | TRUE        | 14.4                 |                      |      |      |      |
| 8  | 8.4  | Add water fountains at 5 parks, with a focus on parks in equity zones   |          | TRUE        | 14.4                 |                      |      |      |      |
| 8  | 8.5  | Develop a heat illness training program and provide this training to park operations supervisors, park maintenance staff, program staff who run outdoor programs/events, and new employees who will work outside. Develop plans to scale it up to include contracted staff. |          | TRUE        | 14.6                 |                      |      |      |      |
| 8  | 8.6  | Continue to increase tree planting and shade at parks, with a focus on parks in equity zones.   |          | TRUE        | 14.1                 |                      |      |      |      |
| <b>#9 Strengthening Partnerships</b>               |      |   |          |             |                      |                      |      |      |      |
| 9  | 9.1  | Increase capacity to work with partners.  |          | TRUE        | 9.1                  |                      |      |      |      |
| 9  | 9.2  | Develop a partnership tier matrix and make it available on BREC's website.  |          |             | 9.1                  |                      |      |      |      |
| 9  | 9.3  | Develop partnerships with 2-4 recreation providers to expand access, with a focus on equity zones.  |          | TRUE        | 1.6                  |                      |      |      |      |
| 9  | 9.4  | Improve private support for BREC's parks (financial contributions, volunteer hours, etc.)   |          | TRUE        | 23.6                 |                      |      |      |      |
| <b>#10 Reflect and Develop next strategic Plan</b> |      |   |          |             |                      |                      |      |      |      |
| 10   | 10.1 | Review the first strategic plan and use lessons learned to inform the development of the next strategic plan.   |          |             | N/A                  |                      |      |      |      |
| 10   | 10.2 | Review the CIP prioritization framework and make any updates to the process.  |          | TRUE        | N/A                  |                      |      |      |      |
| 10   | 10.3 | Update the equity zones map with the latest available ACS data and to incorporate park investments over the past 3 years.   |          |             | N/A                  |                      |      |      |      |
| 10   | 10.4 | Consider updating inventory data, with a focus on parks previously assessed in fair condition and/or that have had major projects in the past 3 years.  | yes      |             | N/A                  |                      |      |      |      |
| 10   | 10.5 | Complete the development of the next 3 year plan including updated CIP. Get ready to implement it!  |          |             | N/A                  |                      |      |      |      |

# APPENDIX D: IYP3 GOALS + RECOMMENDATIONS [WELCOMING EVERYONE: GOALS + STRATEGIES FOR EQUITY]

| Principle 1: Equity, Welcoming Everyone  |   |   |           |               |  |  |                    |                |           |             | PROJECTED COMPLETION |      |      |
|--|---|---|-----------|---------------|--|--|--------------------|----------------|-----------|-------------|----------------------|------|------|
| Goal   | Strategy  | Recommendations   | Quick Win | High Priority | Lead   | Partners   | Related Strategies | Key Focus Area | Completed | In Progress | 2026                 | 2027 | 2028 |
| <b>01 Equitable Quality</b>  |   |   |           |               |  |  |                    |                |           |             |                      |      |      |
| Develop and maintain high-quality parks, facilities, and programming across all communities while also adapting to unique neighborhood needs.                            | 1.1 Updated Level of Service Standards          | Develop updated level of service standards that consider the region's diverse development patterns and equity goals.  |           | Yes           | P+E and Recreation, in collaboration with all departments as well as the community | TPL  | 1.4                |                |           | yes         |                      |      |      |
|  | 1.2 Equity-based Reinvestment                   | Reinvest in under-served communities and in parks/facilities that have important equity legacies.   |           |               | P+E, in collaboration with Recreation and P&D                                      | CAC's, Friends Groups, and local, applicable non-profits                   |                    |                |           | yes         |                      |      |      |
|  | 1.3 Minimum Comfort Standards                   | Define minimum comfort standards for parks and recreation facilities (ex. A/C in indoor facilities, water fountains for parks, etc.) and prioritize achieving these first in equity zones.  | Yes       | Yes           | P&E in collaboration with Recreation and P&D                                       | CAC's, Friends Groups, and local, applicable non-profits                   | 13.1,14.3          |                |           | yes         |                      |      |      |
|  | 1.4 Priority Equity Mapping                     | Maintain priority equity mapping along with the BREC strategic plan to identify priority regions for future investments   |           |               | P&E in collaboration with from Recreation and P&D                                  | CAC's, Friends Groups, and local, applicable non-profits                   | 1.1                |                |           | yes         |                      |      |      |
|  | 1.5 Community + Staff Park Audits with Projects | Include a community + staff park audit as a component of planning for major park and facility renovations to gather resident ideas and maintenance concerns about local parks and programs.   |           |               | P&D in partnership with the local communities                                      | CAC's, Friends Groups, and local, applicable non-profits                   |                    |                |           | yes         |                      |      |      |
|  | 1.6 Partnerships to Expand Access               | Develop partnerships with schools, other recreation providers, and "non-traditional" landowners to increase access to and maintenance of greenspace across the parish.  |           |               | P&D in partnership with the local communities                                      | CAC's, Friends Groups, and local, applicable non-profits                   | 9.1                | 9.3            |           | yes         |                      |      |      |
|  | 1.7 Expanding Access through New Development    | Expand partnerships and incentives for the development community to increase park access and maintenance across the parish in accordance with growth.   |           |               | P&D and Superintendent's Office  | TPL, local municipalities, and developer community                         |                    |                |           | yes         |                      |      |      |
| <b>02 Equitable Operations</b>   |   |   |           |               |  |  |                    |                |           |             |                      |      |      |
| Develop a robust workforce by increasing access to opportunity through equitable hiring, operations, education/training, and internal advancement within the department. | 2.1 Equitable Procurement and Purchasing        | Supporting small, local, and minority owned businesses that can provide services to BREC in alignment with BREC's updated DBE policy.   |           | Yes           | Purchasing and Small Business Mgr  | Local non-profits and municipal governments                                |                    |                |           | yes         |                      |      |      |
|  | 2.2 Staff Training on Equity Topics             | Expand staff training programs to include topics such as parish history, equitable and ethical practices, implicit biases, and engagement strategies for relevant BREC staff that work directly with system users including full-time staff, contractors, instructors, partners, and BREC leadership. |           |               | HR in collaboration with all other departments                                     | Local training or consulting businesses, historians, and community leaders |                    |                |           | yes         |                      |      |      |
|  | 2.3 Expanded Recruitment                        | Engage BREC department staff in the recruitment process and actively recruit for open positions to draw in the highest quality professionals from the state and greater region.   |           | Yes           | HR   | Communications   |                    | 2.3            |           | yes         |                      |      |      |

# APPENDIX D: IYP3 GOALS + RECOMMENDATIONS [WELCOMING EVERYONE: GOALS + STRATEGIES FOR EQUITY]

| Principle 1: Equity, Welcoming Everyone   |  |  |           |               |   |  |                    |                |           |             | PROJECTED COMPLETION |      |      |
|---|--|--|-----------|---------------|---|--|--------------------|----------------|-----------|-------------|----------------------|------|------|
| Goal  | Strategy                               | Recommendations  | Quick Win | High Priority | Lead  | Partners   | Related Strategies | Key Focus Area | Completed | In Progress | 2026                 | 2027 | 2028 |
| <b>03 Accessible, Welcoming Design</b>  |  |  |           |               |   |  |                    |                |           |             |                      |      |      |
| Implement park design strategies that improve accessibility and increase a sense of belonging for community members who may have historically or currently face barriers to access. | 3.1 Language Access Plan               | Develop a language access plan for increased multilingual marketing, programs, and park amenities like signage.  |           |               | P&E and Communications  | Friends groups in applicable communities   |                    |                |           |             |                      |      |      |
|   | 3.2 ADA Transition Plan implementation | Continue to implement the ADA transition plan in existing parks  |           |               | P&E and Park Ops  | Disability Advocacy Groups   |                    |                | yes       |             |                      |      |      |
|   | 3.3 Inclusive Design Toolkit           | Create an Inclusive Design Toolkit which lists the baseline accessible amenities that BREC should offer.   |           |               | P&E in collaboration with Recreation, HR, Park Ops, and a CAC |  |                    |                |           |             |                      |      |      |
| <b>04 Engaged Participation</b>   |  |  |           |               |   |  |                    |                |           |             |                      |      |      |
| Identify and reduce barriers to participation, while also expanding avenues for community engagement regarding future BREC investments and decisions                                | 4.1 Innovative Community Engagement    | Explore innovative community engagement strategies to increase participation of non-traditional park users.  |           | Yes           | P&D in collaboration with Recreation, Communicaitons, and P&E | CAC's, Friends Groups, and local applicable non-profits, area businesses, and area schools | 2.2                |                |           | yes         |                      |      |      |
|   | 4.2 BREC Youth Advisory Council        | Explore development of a BREC youth advisory council that meet regularly to discuss issues in their communities from a youth perspective and provide input on new programming and marketing ideas. |           |               | Recreation and P&D  | Communications, area schools, youth organizations  |                    |                |           |             |                      |      |      |
| <b>05 Inclusive Stories</b>   |  |  |           |               |   |  |                    |                |           |             |                      |      |      |
| Diversify interpretive signage, programs, and events to center underrepresented stories, people, and places   | 5.1 Underrepresented Stories Signage   | Develop historical and interpretive signage standards that elevate the underrepresented stories and histories of BREC and the parish.  |           |               | Communications, P&E, and P&D                                  | Local historian and higher education institutions  | 5.2                |                |           | yes         |                      |      |      |
|   | 5.2 Historical Programming             | Create historical programming to connect underrepresented narratives to the parks and facilities using existing BREC standards.  |           |               | Recreation, P&E, and P&D                                      | Local historian and higher education institutions  |                    |                |           | yes         |                      |      |      |
|   | 5.3 Equity + History Partnerships      | Explore opportunities to partner with higher education institutions to develop materials about the intersection of park facilities, equity, and parish history.                                    |           |               | Recreation, P&E, and P&D                                      | Local historian and higher education institutions  | 5.1,5.2            |                |           |             |                      |      |      |

# APPENDIX D: IYP3 GOALS + RECOMMENDATIONS

[CONNECTED PEOPLE: GOALS + STRATEGIES FOR SENSE OF COMMUNITY + PROGRAMMING]

| Principle 2: Community, Connected People   |   |  |           |               |      |          |                    |                |           | PROJECTED COMPLETION |      |      |      |
|--|---|--|-----------|---------------|------|----------|--------------------|----------------|-----------|----------------------|------|------|------|
| Goal   | Strategy                                      | Recommendations  | Quick Win | High Priority | Lead | Partners | Related Strategies | Key Focus Area | Completed | In Progress          | 2026 | 2027 | 2028 |
| <b>06 Programming</b>  |   |  |           |               |      |          |                    |                |           |                      |      |      |      |
| Expand and diversify programming to meet BREC's focus on equity and national and regional trends.                            | 6.1 Responding to Recreation Trends           | Test new recreation programs related to national and regional trends to identify possible new program offerings.   |           |               |      |          |                    |                |           | Yes                  |      |      |      |
|  | 6.2 Reduced Barriers to Programming           | Continue to reduce barriers to participation in BREC programming and consider opportunities for partnerships to expand access  |           |               |      |          |                    |                |           | Yes                  |      |      |      |
|  | 6.3 Flexible Gathering Spaces                 | Design parks and facilities with flexible gathering spaces and functionalities that can be used for community events and programs especially in neighborhoods with high amounts of multi-family housing and density.   |           | Yes           |      |          |                    |                |           | Yes                  |      |      |      |
|  | 6.4 Wifi Access at Key Parks                  | Develop public internet hot spots that can be utilized by nearby residents to further expand internet access in parts of EBRP that have low internet access as identified in the ConnectLA Study and map parks within these areas.   | Yes       |               |      |          |                    |                |           |                      |      |      |      |
|  | 6.5 Online Reservation System                 | Update BREC reservation systems to allow for online reservations of community spaces and cross department access of reservation logs.  | Yes       | Yes           |      |          |                    |                |           |                      | Yes  |      |      |
|  | 6.6 Shared Staffing across Recreation Centers | Consider staffing models that share staff across multiple BREC recreation centers in areas with multiple centers.  |           |               |      |          |                    |                |           |                      | Yes  |      |      |
| <b>07 Community Health</b>   |   |  |           |               |      |          |                    |                |           |                      |      |      |      |
| Continue to support community health and wellbeing through recreation offerings, education, social connection and relaxation | 7.1 Health Partnerships                       | Expand access to exercise amenities at BREC parks through partnerships and funding from local health clinics or donors, and explore other opportunities for financial support from EBRP healthcare sector.   |           |               |      |          |                    |                |           | Yes                  |      |      |      |
|  | 7.2 ParkRX Program                            | Explore the opportunity of a ParkRX program with local health care agencies.   |           |               |      |          |                    |                |           |                      |      |      |      |
|  | 7.3 Healthy Food Programs                     | Expand healthy food programs such as community garden spaces and nutrition program partnerships within parks, prioritizing parks that are near concentrations of multifamily housing.  |           |               |      |          |                    |                |           |                      | Yes  |      |      |
|  | 7.4 Community Health Resources                | Facilitate community health programs at BREC facilities by providing spaces for partners to use to offer programs.   |           |               |      |          |                    |                | 7.1       |                      |      |      |      |
| <b>08 Safety and Security and Activation</b>   |   |  |           |               |      |          |                    |                |           |                      |      |      |      |
| Continue to make BREC facilities active, safe, and positive places to visit and enjoy  | 8.1 Safe Parks Design Pilot Program           | Develop a safe parks design pilot program to identify elements of park design and <b>policies residents associate with increased security</b> . Utilize this data to then develop safe parks design guidelines which can be tested at select park locations to promote safe park design in EBRP. |           | Yes           |      |          |                    |                |           | Yes                  |      |      |      |
|  | 8.2 Safety/Security Investments               | Continue to invest in technology (cameras, license plate readers, etc.), lighting, and physical safety improvements in strategic park and greenway locations along with data collection of incidents to curb vandalism and delinquency in parks.   |           |               |      |          |                    |                |           | Yes                  |      |      |      |
|  | 8.3 Safety-based Programming Initiatives      | Develop safety based programming and initiatives such as a Park Ambassador Program in parks adjacent to high-crime neighborhoods to create a renewed sense of safety in parks and greenways.   |           |               |      |          |                    |                |           |                      |      |      |      |
|  | 8.4 Staff Safety Standards                    | Develop staff safety standards and assess existing staff work locations for improvements to ensure the safety of BREC staff and security of property.  | Yes       |               |      |          |                    |                |           |                      | Yes  |      |      |

# APPENDIX D: IYP3 GOALS + RECOMMENDATIONS

[CONNECTED PEOPLE: GOALS + STRATEGIES FOR SENSE OF COMMUNITY + PROGRAMMING]

| Principle 2: Community, Connected People  |  |  |           |               |  |   |                    |                |           | PROJECTED COMPLETION |      |      |      |
|---|--|--|-----------|---------------|--|---|--------------------|----------------|-----------|----------------------|------|------|------|
| Goal  | Strategy   | Recommendations  | Quick Win | High Priority | Lead   | Partners  | Related Strategies | Key Focus Area | Completed | In Progress          | 2026 | 2027 | 2028 |
| <b>09 Partnerships</b>  |  |  |           |               |  |   |                    |                |           |                      |      |      |      |
| Expand and foster partnerships with community organizations and stakeholders to improve community health, foster equitable access, and expand programming opportunities | 9.1 Tiered Partnership Framework                           | Develop a tiered partnership framework to create guidelines for partnership commitments and level of BREC support.   |           | Yes           | P&D  |   |                    | 9.1, 9.2       |           | Yes                  |      |      |      |
|   | 9.2 Online Partnership Information                         | Create an easy-to-access page on the BREC website that lists partnership requirements associated with each tier, highlights existing partners and the work done with each, and allows stakeholders to submit a partnership application form for consideration. | Yes       |               | P&D is lead to provide info and requirements, communications would help in hosting information online. |   |                    |                |           | Yes                  |      |      |      |
|   |  | Foster partnerships in areas with multiple BREC recreation centers to utilize existing infrastructure and support existing programs in a community.  |           |               | Recreation in collaboration with P&D   | local non-profits   |                    |                |           | Yes                  |      |      |      |
|   | 9.3 Friends Group Formation                                | Continue to promote Friends Groups and assess how to overcome barriers to formation.   |           |               | P&D in collaboration with Recreation   |   |                    |                |           |                      |      |      |      |
| <b>10 Marketing and Communications</b>  |  |  |           |               |  |   |                    |                |           |                      |      |      |      |
| Continue to expand awareness of BREC facilities and programs, with an equity focus  | 10.1 Integrated Communication Channels                     | Ensure consistent messaging across all communication channels, including traditional and non-traditional media, and in-person interactions.  |           |               | Communications in collaboration with P&D and I.S.  | Local Community Organizations, Schools and Universities, Local Businesses, and Marketing Experts and Consultants                            |                    |                |           | Yes                  |      |      |      |
|   | 10.2 Enhanced Interactive Online and Social Media Presence | Boost digital engagement by expanding online and social media marketing efforts.   |           |               | Communications   | Local Influencers and Content Creators, Digital Marketing Agency, Schools and Universities, and Technology Partners                         |                    |                |           | Yes                  |      |      |      |
|   | 10.3 Comprehensive Content and Traditional Media Strategy  | Continue BREC's robust content marketing plan to ensure a wide-reaching and consistent presence across multiple platforms.   |           |               | Communications in collaboration with P&D   |   |                    |                |           | Yes                  |      |      |      |
|   | 10.4 Equity-focused Outreach                               | Implement targeted marketing campaigns aimed at underrepresented communities.  |           |               | Communications   | Local Community Organizations, Schools and Universities, Faith-Based Organizations, and Healthcare Providers and Clinics                    |                    |                |           | Yes                  |      |      |      |
|   | 10.5 Communications Partnerships                           | Expand outreach methods in collaboration with partners to help increase audience to non aware users.   |           |               | P&D  | Local Media Outlets   |                    |                |           | Yes                  |      |      |      |
|   | 10.6 Feedback Mechanisms                                   | Establish robust feedback mechanisms to continuously gather community input.   |           |               | P&D in collaboration with Communications, IS, and all other BREC departments as well as the community  | Local Community, Organizations, Schools and Universities, Faith-Based Organizations, Local Businesses, and Healthcare Providers and Clinics |                    |                |           | Yes                  |      |      |      |
|   | 10.7 Safety and Quality Assurance Marketing Campaign       | Highlight ongoing safety and quality improvements in marketing campaigns to reassure visitors to maintain a positive reputation.   |           |               | P&D in collaboration Communications  | Local Media Outlets   |                    |                |           | Yes                  |      |      |      |
|   | 10.8 Promotional Merchandise                               | Distribute BREC-branded merchandise at events and through local partners to increase brand visibility and foster community pride.  | Yes       |               | Communications   |   |                    | 7.2            |           | Yes                  |      |      |      |
|   | 10.9 New Marketing Budget Process                          | Adjust the way BREC sets the annual marketing budget.  |           |               | Superintendent's Office and Communications   | Finance Department, Program Managers, and Marketing Experts and Consultants   |                    |                |           | Yes                  |      |      |      |

# APPENDIX D: IYP3 GOALS + RECOMMENDATIONS [CONNECTED ENVIRONMENT: GOALS + STRATEGIES FOR ENVIRONMENT + RESILIENCE]

| Principle 3: Environment, Connected Environment  |   |  |                 |                     |      |                  |                            |   |           |             | PROJECTED COMPLETION |      |      |
|--|---|--|-----------------|---------------------|------|------------------|----------------------------|---|-----------|-------------|----------------------|------|------|
| Goal   | Strategy  | Recommendations  | Quick Win Votes | High Priority Votes | Lead | Partners         | Related Strategies         | Key Focus Area  | Completed | In Progress | 2026                 | 2027 | 2028 |
| <b>11 Sustainable Landscapes and Environmental Quality</b>   |   |  |                 |                     |      |                  |                            |   |           |             |                      |      |      |
| Scale up sustainable landscape management practices to reduce long-term maintenance efforts and contribute to the health of the EBPR ecosystem.          | 11.1 Sustainable Landscapes and Maintenance         | Expand and enhance sustainable landscape practices and maintenance strategies, including meadows, reduced mowing, and tree groves, to boost ecological value while ensuring visitor safety at BREC facilities. |                 |                     |      | Park Ops and NRM |                            | P&E   |           | Yes         |                      |      |      |
|  | 11.2 Tree Preservation and Planting Program         | Develop and implement a comprehensive tree preservation and planting program focusing on species with high carbon sequestration and air pollution removal capabilities.  |                 |                     |      | Park Ops and NRM |                            | P&E and conservation programs   |           | Yes         |                      |      |      |
|  | 11.3 SITES Accreditation for Parks                  | Explore the possibility of meeting some of the standards set by the Sustainable Sites Initiative (SITES) accreditation for BREC parks, demonstrating commitment to sustainable landscape practices.            |                 |                     |      |                  | P&E and NRM                | Park Ops  |           |             |                      |      |      |
|  | 11.4 Develop Tree Ambassador Program                | Create and implement a Tree Ambassador program to educate the community on tree benefits and promote tree planting beyond BREC parks.  |                 |                     |      |                  | P & E, Park Ops, NRM, CORE | Baton Rouge Green: Baton Root   |           | Yes         |                      |      |      |
|  | 11.5 Biodiverse Planting Areas                      | Increase and diversify biodiverse planting areas across all BREC parks, incorporating various native landscape types and scales.   |                 |                     |      |                  | P&E, Park Ops, and NRM     |   |           | Yes         |                      |      |      |
|  | 11.6 Native and Climate- Appropriate Species        | Implement a policy to prioritize native and climate-adaptive plant species in all BREC park plantings, considering future climate scenarios.   |                 |                     |      |                  | P&E and Park Ops           |   |           | Yes         |                      |      |      |
| <b>12 Sustainable Facilities</b>   |   |  |                 |                     |      |                  |                            |   |           |             |                      |      |      |
| Continue to implement sustainable practices across the BREC system to reduce the system's environmental footprint and reduce energy costs.               | 12.1 Energy Audits and Upgrades                     | Conduct thorough energy audits of BREC facilities and implement cost-effective energy-saving measures, including exploration of solar options for energy resilience.   | Yes             |                     |      |                  |                            | P&E   |           |             |                      |      |      |
|  | 12.2 Community Resilience Hubs                      | Continue to explore how BREC facilities can act as resilience hubs for the community.  |                 | Yes                 |      |                  |                            | P&E   |           | Yes         |                      |      |      |
| <b>13 Water Management</b>   |   |  |                 |                     |      |                  |                            |   |           |             |                      |      |      |
| Increase the capacity of BREC parks to manage storm water and contribute to regional flood solutions through green infrastructure and innovative design. | 13.1 Vegetated Swales                               | Replace concrete drainage swales with vegetated alternatives to enhance water management.  |                 |                     |      |                  |                            | P&E   |           | Yes         |                      |      |      |
|  | 13.2 Enhanced Water Storage Capacity in Park System | Expand water storage capabilities within BREC parks to mitigate local flooding and improve overall water management.   |                 |                     |      |                  |                            | P&E   |           | Yes         |                      |      |      |
|  | 13.3 Environmental Performance Metrics              | Develop and implement a comprehensive set of environmental performance metrics for stormwater management and flood mitigation in BREC parks.   |                 |                     |      |                  |                            |   | P&E       | Yes         |                      |      |      |
|  | 13.4 Water Management Partnerships                  | Strengthen and expand partnerships with public agencies to enhance regional stormwater management strategies in East Baton Rouge Parish  |                 |                     |      |                  |                            | BREC, Amite River Basin Commission, Pontchartrain Levee District, City Parish, and other agencies involved in regional flood risk reduction |           | Yes         |                      |      |      |
|  | 13.5 Floodplain-Aware Facility Planning             | Develop and implement a BREC policy for flood-resilient facility placement and program design based on current and projected floodplain data, where possible.  |                 |                     |      |                  |                            |   | P&E       | Yes         |                      |      |      |
|  | 13.6 Green Infrastructure Maintenance Standards     | Create comprehensive maintenance standards for green infrastructure elements, including capacity thresholds and tiered maintenance levels  |                 |                     |      |                  |                            |   | P&E       | Yes         |                      |      |      |

# APPENDIX D: IYP3 GOALS + RECOMMENDATIONS [CONNECTED ENVIRONMENT: GOALS + STRATEGIES FOR ENVIRONMENT + RESILIENCE]

| Principle 3: Environment, Connected Environment   |   |  |                 |                     |  |          |                       |                |           | PROJECTED COMPLETION |      |      |      |
|---|---|--|-----------------|---------------------|--|----------|-----------------------|----------------|-----------|----------------------|------|------|------|
| Goal  | Strategy  | Recommendations  | Quick Win Votes | High Priority Votes | Lead   | Partners | Related Strategies    | Key Focus Area | Completed | In Progress          | 2026 | 2027 | 2028 |
| <b>14 Heat Resilience</b>   |   |  |                 |                     |  |          |                       |                |           |                      |      |      |      |
| Contribute to cooler communities and heat relief, especially in areas experiencing higher localized temperatures (urban heat island effect), through strategic planting, shade structures, and cooling amenities with a focus on human comfort and well-being while using park facilities.  | 14.1 Tree Canopy Goals and Inventory              | Develop and implement minimum tree canopy coverage goals for all BREC parks.   |                 |                     | P&E  |          |                       | 8.6            |           | Yes                  |      |      |      |
|   | 14.2 Cooling Features and Programming             | Increase and enhance cooling amenities and related programming in BREC parks, with a focus on areas most affected by urban heat island effects   |                 |                     | P&E and Recreation                             |          |                       |                |           | Yes                  |      |      |      |
|   | 14.3 Shade for Outdoor Activity Areas             | Strategically implement shading solutions for playgrounds, sports fields, and outdoor activity areas, focusing on player and spectator comfort during typical usage times.   | Yes             |                     | P&E  |          |                       |                |           | Yes                  |      |      |      |
|   | 14.4 Heat Safety & Heat Resilience Policies       | Develop BREC policies to support health and safety on hot days, such as shading all playgrounds and including water fountains in every park, starting in equity focus areas that experience elevated temperatures.   | Yes             |                     | P&E  |          | 1.3, 14.1, 14.3, 14.5 | 8.3, 8.4       | Yes       |                      |      |      |      |
|   | 14.5 Heat Operations Action Plan + BREC Heat Team | Form an inter-departmental Heat Team and develop a Heat Operations Action Plan to guide how BREC will adjust outdoor work and programming on high-heat days, including related communication strategies.   |                 |                     | P&E, Park Ops, Recreation, and Risk Management |          | 14.4, 14.6            | 3.4, 8.1, 8.2  |           | Yes                  |      |      |      |
|   | 14.6 Heat Illness Awareness Training              | Implement heat illness awareness training for outdoor workers and supervisors, programming staff, coaches, and contractors. (especially programming staff, coaches, and contractors who work with older adults, youth, and any other groups who are more sensitive to heat-related health problems.) |                 |                     | HR   |          |                       |                | 8.5       | Yes                  |      |      |      |
| <b>15 Open Space Preservation and Environmental Education</b>   |   |  |                 |                     |  |          |                       |                |           |                      |      |      |      |
| Preserve high value landscapes that protect the scenic beauty and environmental function of the parish—supporting quality of life, environmental justice, community character, and economic development (retention/attraction of residents, businesses, and tourists). Promote community engagement and education by connecting residents to areas that reveal Louisiana's diverse natural landscape ecology. | 15.1 Ecological Baseline Inventories              | Complete comprehensive baseline inventories to assess the ecological health and value of BREC's conservation areas, nature reserves, and conservation management units.  |                 |                     | P&E  |          |                       | 6.7            |           | Yes                  |      |      |      |
|   | 15.2 Protecting and Enhancing Biodiverse Areas    | Implement a comprehensive strategy to protect, enhance, and restore biodiverse areas with high biodiversity, incorporating adaptive management techniques and climate change considerations.   |                 |                     | P&E  |          |                       |                |           | Yes                  |      |      |      |
|   | 15.3 Expand Environmental Engagement              | Increase and diversify environmental engagement opportunities across BREC's park system, including both conservation areas and general-use parks.  |                 |                     | P&E, Rec, and P&D                              |          |                       |                |           | Yes                  |      |      |      |
|   | 15.4 Nature Reserve Communication                 | Develop and implement a comprehensive communication strategy to increase awareness of the value of BREC's nature reserves.   |                 |                     | P&E and Communications                         |          |                       |                |           | Yes                  |      |      |      |
|   | 15.5 Conservation Partnerships                    | Develop and nurture strategic partnerships to enhance the long-term health and maintenance of BREC's conservation areas and nature reserves.   |                 |                     | P&E and P&D                                    |          |                       |                |           | Yes                  |      |      |      |

# APPENDIX D: IYP3 GOALS + RECOMMENDATIONS [CONNECTED PLACES: GOALS + STRATEGIES FOR CONNECTIVITY]

| Principle 4: Connectivity, Connected Places  |  |   |           |               |      |                                       |   |                |           | PROJECTED COMPLETION |      |      |      |
|--|--|---|-----------|---------------|------|---------------------------------------|---|----------------|-----------|----------------------|------|------|------|
| Goal   | Strategy   | Recommendations   | Quick Win | High Priority | Lead | Partners                              | Related Strategies  | Key Focus Area | Completed | In Progress          | 2026 | 2027 | 2028 |
| <b>16 Greenway System Expansion and Sustainable Maintenance</b>  |  |   |           |               |      |                                       |   |                |           |                      |      |      |      |
| Expand the greenway trail system, with a focus on developing models for sustainable maintenance.   | 16.1 Create Functional Use Classification System For Trails        | Define the primary purpose of each trail section to determine its baseline level of service for access, amenities, and identify funding sources.  |           |               |      | P&E                                   | EBR Complete Streets Committee, DOTD, and CRPC Regional Bike Ped Committee          |                |           |                      |      |      |      |
|  | 16.2 Pedestrian and Bicycle Network Mapping and Expansion          | Continue to work with partners to prioritize, develop, and implement the EBRP pedestrian and bicycle network, including identifying and implementing new funding and maintenance models to ensure long-term sustainability. |           |               |      | City Parish and P&E                   | BREC P&E and P&D, EBR Complete Streets Committee, DOTD, and CRPC Bike Ped Committee | 4.4            |           | Yes                  |      |      |      |
|  | 16.3 Coordinate and Share Resources with Partner Organizations     | Advocate and coordinate with partner organizations for the build out of the EBR Bike Ped network and BREC Greenway system.  | Yes       |               |      | P&E, P&D, and Superintendent's Office | City Parish, DOTD, LDH, BRAF, BRAC, CRPC, and Safety Coalition                      | 4.1, 4.3       |           | Yes                  |      |      |      |
|  | 16.4 Advocate for Greenway Expansion and Inclusion in Public Works | Continue to identify and collaborate with partners to expand bike and pedestrian infrastructure in the parish.  | Yes       |               |      | P&E                                   | Complete Streets Advisory Committee, DPW, DOTD City Parish, and CRPC                | 4.2            |           | Yes                  |      |      |      |
| <b>17 Quality, Safe Routes to Parks</b>  |  |   |           |               |      |                                       |   |                |           |                      |      |      |      |
| Partner with other organizations to create safe networks of quality facilities to improve pedestrian, cycling, and transit networks to all facilities. | 17.1 10-min Walk Access  | Increase access to parks within 10-min walk gap areas, where possible while also prioritizing overall system sustainability. Prioritize increasing access within equity areas.  | Yes       |               |      | City Parish and P&E                   | BREC, DOTD, EBR Complete Streets Committee, and LDH                                 |                |           |                      |      |      |      |
|  | 17.2 Barriers to Park Access Data Collection and Partnerships      | In partnership with others, develop data and maps that identify the areas in greatest need of focus to improve pedestrian and bicycle access to parks.  |           |               |      | City Parish, P&E                      | BREC, DOTD, EBR Complete Streets Committee, and LDH                                 |                |           |                      |      |      |      |
|  | 17.3 Safe Routes Partnerships                                      | Create collaborative partnerships to advocate and prioritize pedestrian and bicycle infrastructure improvements within a half mile to parks in areas with low car ownership.  |           | Yes           |      | P&E, P&D                              | DOTD, CRPC Safety Dept, Public Works, CATS, Entergy, and Police Dept.               |                |           |                      |      |      |      |
|  | 17.4 Safe Routes To Parks Toolkit                                  | Develop a Safe Routes to Parks Toolkit to identify strategies existing and proposed park facilities can implement.  | Yes       |               |      | P&E                                   | EBR PW, Police Dept, Neighborhood Groups, Safe Routes Partnership, and TPL          |                |           |                      |      |      |      |

# APPENDIX D: IYP3 GOALS + RECOMMENDATIONS [CONNECTED PLACES: GOALS + STRATEGIES FOR CONNECTIVITY]

| Principle 4: Connectivity, Connected Places   |   |   |           |               |      |  |   |                |           | PROJECTED COMPLETION |      |      |      |
|---|---|---|-----------|---------------|------|--|---|----------------|-----------|----------------------|------|------|------|
| Goal  | Strategy  | Recommendations   | Quick Win | High Priority | Lead | Partners   | Related Strategies  | Key Focus Area | Completed | In Progress          | 2026 | 2027 | 2028 |
| <b>18 Increase Blueway System Use</b>   |   |   |           |               |      |  |   |                |           |                      |      |      |      |
| Increase recreation access to Parish's waterways by improving access and conditions of the parish waterways   | 18.1 Blueway Monitoring System                                      | Develop a blueway monitoring system identifying locations with most frequent use.   |           |               |      | P&E  | LDWF  |                |           |                      |      |      |      |
|   | 18.2 Kayak Rental/Storage Program                                   | Create a kayak rental/storage program for all parks where the blueway system is accessible.   | Yes       |               |      | Recreation   | P&E and Conservation  |                |           | Yes                  |      |      |      |
|   | 18.3 Blueway Marketing Campaign                                     | Develop marketing campaigns to increase awareness of the blue way system and related amenities.   |           |               |      | Communications in collaboration with P&E and P&D       | P&E and P&D   |                |           |                      |      |      |      |
|   | 18.4 Blueway Standards / Design Guidelines                          | Develop blueway standards / design guidelines to increase use.  |           | Yes           |      | P&E  |   |                |           | Yes                  |      |      |      |
| <b>19 Increase Greenway System Use</b>  |   |   |           |               |      |  |   |                |           |                      |      |      |      |
| Improve existing and proposed off-street trail network and perception of trail safety   | 19.1 Comprehensive Bicycle and Pedestrian Network Design Guidelines | Create design guidelines that address trail safety, all weather use, and anticipated use to ensure high quality facilities.   |           | Yes           |      | P&E  | City Parish   |                |           | Yes                  |      |      |      |
|   | 19.2 Trail Ambassadors  | Led through a partnership or nonprofit, consider the development of a trail ambassadors program.  |           |               |      | Nonprofit partnership, Friends Groups, or BRPD / EBRSO | P&E and Park Ops  |                |           | Yes                  |      |      |      |
|   | 19.3 Trail Data Collection  | Establish trail data collection framework and procedures to understand use patterns and identify opportunities to reduce barriers to use.   | Yes       |               |      | P&E  | EBR Complete Streets Committee, DOTD, and CRPC                  |                |           |                      |      |      |      |
| <b>20 Create Regional Connections</b>   |   |   |           |               |      |  |   |                |           |                      |      |      |      |
| Create a parish-wide regional trail network to increase physical activity and access to natural resources and create an off-road regional trail network connecting adjacent parishes. | 20.1 Regional Bike/Ped Committee                                    | Using the Capital Region Bicycle Pedestrian plan as a basis, collaborate on the development of a regional bike/ ped committee with the CRPC to identify priority locations for inter-parish bike/ ped connectivity and program the development of an inter-parish trail system. |           |               |      | CPRC   | EBR City Parish, BREC, Accession, and East Feliciana Livingston |                |           |                      |      |      |      |
|   | 20.2 Regional Bike and Blueway Trail Extensions                     | Develop bike and blueway trail extensions in coordination with adjoining parishes.  |           |               |      | P&E  | EBR City Parish, CRPC, and Ascension Parish                     |                |           |                      |      |      |      |

# APPENDIX D: IYP3 GOALS + RECOMMENDATIONS

[MOVING FORWARD SUSTAINABLY: GOALS + STRATEGIES FOR A SUSTAINABLE PORTFOLIO]

| Principle 5: Sustainable Portfolio, Moving Forward Sustainably   |   |  |           |               |  |              |                      |                         |           | PROJECTED COMPLETION |      |      |      |      |
|--|---|--|-----------|---------------|--|--------------|----------------------|-------------------------|-----------|----------------------|------|------|------|------|
| Goal   | Strategy  | Recommendations  | Quick Win | High Priority | Lead                                     | Partners     | Related Strategies   | Key Focus Area          | Completed | In Progress          | 2025 | 2026 | 2027 | 2028 |
| <b>21 Sustainable Recreation Centers</b>   |   |  |           |               |  |              |                      |                         |           |                      |      |      |      |      |
| Transition to a tiered recreation center model and recalibrate the existing recreation center portfolio. | 21.1 New Recreation Center Tiered Delivery Model      | Create a Rec Center Transition Action Plan that identifies how to transition existing recreation centers to the tiered approach recommended in IYP3. Implement this plan. Set a policy of no net increases in the number of BREC recreation centers. |           | Yes           | P&D                                      |              | 1.1, 1.2, 21.4, 21.4 | 2.1, 2.2, 2.3, 2.4, 2.5 | Yes       |                      |      |      |      |      |
|  | 21.2 Sustainable Portfolio Communications Campaign    | Develop a sustainable portfolio communications campaign that increases awareness about the need to transition to a tiered rec center model and the long-term benefits it will provide to the parish.   |           |               | Communicaitons                           |              |                      |                         |           | Yes                  |      |      |      |      |
|  | 21.3 BREC on the GEAUX                                | Expand BREC on the GEAUX Mobile Rec Unit to increase mobile programming for portions of the parish with limited park and/or programming access.  |           |               | Recreation                               | Area Schools | 21.1                 |                         |           | Yes                  |      |      |      |      |
|  | 21.4 Indoor Facility Partnerships                     | Partner with non-BREC owned community centers, senior centers, and local schools to close access gaps in underserved communities.  |           |               | Superintendent's Office                  |              |                      | 2.6                     |           |                      |      |      |      |      |
|  | 21.5 Air Conditioning in Recreation Centers (RCTP)    | Provide AC in all indoor recreation center facilities and consider operating these spaces as cooling centers during extreme heat.  |           |               | P&E                                      | Recreation   | 14.5                 |                         |           | Yes                  |      |      |      |      |
| <b>22 Sustainable Parks</b>  |   |  |           |               |  |              |                      |                         |           |                      |      |      |      |      |
| Support high quality, sustainable maintenance and operations.  | 22.1 Remove Obsolete / Redundant Facilities and Lands | Identify opportunities to recalibrate staffing and operational needs across the system to support the goal of an overall sustainable portfolio.  |           | Yes           | All in collaboration with HR and Finance |              |                      | 6.4, 6.5                |           | Yes                  |      |      |      |      |
|  | 22.2 Reduced Mowing                                   | Reduce mowing area and adjust frequency where possible to reduce related staffing needs.   | Yes       | Yes           | Park Ops                                 |              | 11.1, 22.3           | 6.1, 6.6                |           | Yes                  |      |      |      |      |
|  | 22.3 Updated Maintenance Standards                    | Update maintenance standards and operations for park types to utilize available staff effectively across the system.   |           | Yes           | Park Ops                                 |              |                      | 21.6, 6.2, 6.3          |           | Yes                  |      |      |      |      |

# APPENDIX D: IYP3 GOALS + RECOMMENDATIONS

[MOVING FORWARD SUSTAINABLY: GOALS + STRATEGIES FOR A SUSTAINABLE PORTFOLIO]

| Principle 5: Sustainable Portfolio, Moving Forward Sustainably  |   |   |           |               |   |                       |                    |                |           | PROJECTED COMPLETION |      |      |      |      |
|---|---|---|-----------|---------------|---|-----------------------|--------------------|----------------|-----------|----------------------|------|------|------|------|
| Goal  | Strategy  | Recommendations   | Quick Win | High Priority | Lead  | Partners              | Related Strategies | Key Focus Area | Completed | In Progress          | 2025 | 2026 | 2027 | 2028 |
| <b>23 Sustainable Operations</b>  |   |   |           |               |   |                       |                    |                |           |                      |      |      |      |      |
| Support high quality, sustainable maintenance and operations.   | 23.1 Operations/Maintenance Planning for New Projects | Plan for staffing and maintenance/ operational costs with each new capital project. Prioritize projects where funding sources can be identified to cover both the construction and routine maintenance of the location. |           | Yes           | P&E   | Park Ops              |                    | 7.5            |           | Yes                  |      |      |      |      |
|   | 23.2 Defining BREC's Core Services                    | Update BREC's mission and vision statements. Develop a definition of what BREC's core services are and use this to establish a framework for operations and funding.  | Yes       |               | Superintendent's Office                                     |                       | 1.1, 1.2, 1.3      |                | Yes       |                      |      |      |      |      |
|   | 23.3 Interdepartmental Communication                  | Improve communication across BREC departments to foster increased awareness of department workloads, special skills, and overall morale and sense of community across the agency.                                       |           |               | Superintendent's Office, I.S., and Communications           |                       | 23.4               | 3.3            | Yes       |                      |      |      |      |      |
|   | 23.4 Work Order System Updates                        | Review the current work order prioritization system to see if any adjustments are needed to further prioritize safety, security, and equity.  | Yes       |               | Park Ops  |                       |                    | 3.1, 3.2       | Yes       |                      |      |      |      |      |
|   | 23.5 Leadership Pipeline                              | Inspire the next generation of leaders through training and development.  |           |               | HR  | All departments       |                    | 3.6            |           | Yes                  |      |      |      |      |
|   | 23.6 Private Sector Support                           | Explore opportunities to leverage partnerships and private development to provide dedicated supplemental funding for parks and recreation.  |           |               | P&D   | All departments       |                    | 1.7, 7.3, 23.6 |           | Yes                  |      |      |      |      |
| <b>24 Financial Resilience</b>  |   |   |           |               |   |                       |                    |                |           |                      |      |      |      |      |
| Operate a financially sustainable department that can tackle the current and future needs of the system through the utilization of diverse funding sources. | 24.1 Alternative Pension Contribution Plan            | Propose and advocate for an alternative pension contribution plan to recapture organization contributions toward staff pensions in the case that full-time staff depart with less than 10 years of service.             |           | Yes           | Finance   | Superintendent Office |                    |                |           | Yes                  |      |      |      |      |
|   | 24.2 Financial Sustainability for Facilities          | Evaluate and increase facility admission fees and reduce expenses to reduce operating subsidies and approach financial sustainability at facilities.  |           | Yes           | Recreation in partnership with Finance                      |                       |                    |                |           | Yes                  |      |      |      |      |
|   | 24.3 Alternative Funding Sources                      | Continue to explore alternative revenue sources or funding mechanisms to position BREC to continue to deliver its mission.  |           |               | P&D in collaboration with Finance and all other departments |                       |                    | 7.4            |           | Yes                  |      |      |      |      |
|   | 24.4 Earned Revenue Opportunities                     | Assess BREC's portfolio of revenue generating offerings across the system to identify opportunities to increase earned revenue.   |           |               | Recreation and Facilities                                   |                       | 10.9               | 7.1            |           | Yes                  |      |      |      |      |



