
NEIGHBORHOOD PARK



F-M

FIESTA PARK **BREC NEIGHBORHOOD PARK**



DESCRIPTION

Fiesta Park is located in the Villa Del Rey area. Improvements to the neighborhood park include a reconfigured parking area with new pipe rail and connecting sidewalk. Much needed site

drainage work was completed and the multi-use court repaired.

PROJECT DATE

2012 Site Improvements

PROJECT COST

\$20,000 Park Renovations

FIESTA PARK



FLANACHER ROAD PARK **BREC NEIGHBORHOOD PARK**



DESCRIPTION

Flanacher Road park is located in the north-west portion of EBRP. The previously undeveloped site underwent master planning process. The construction of this neighborhood park and athletic facility features six soccer fields, parking, restroom facilities, a recreation

center, recreation paths, fishing pond, picnic area and shelters, a playground, basketball court, and a disc golf course.

PROJECT DATE

- August 22, 2005 Community Planning Meeting
- April 07, 2008 Phase I Construction Began
- October 24, 2009 Grand Opening

PROJECT COST

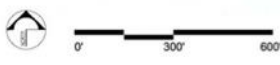
- \$20,000 Master Plan/ Survey
- \$125,000 Construction Documents
- \$3,250,000 Phase I Construction

FLANACHER ROAD PARK



FLANACHER ROAD PARK **BREC NEIGHBORHOOD PARK**

PROJECT SITE PLAN



Improvements Underway
Flanacher Park Master Plan
 BREC Planning and Engineering
 April 29, 2008



FLANACHER ROAD PARK **BREC NEIGHBORHOOD PARK**

PROJECT PHOTOS



FLANACHER ROAD PARK



FLANACHER DISC GOLF COURSE
Please bring your park's clean by leaving behind only your footprints.

LEGEND

- Tree Box
- Basket
- Bench
- Recreation Center
- Restrooms
- Parking
- Handicap Path
- Property Line

PRO TEES	1	2	3	4	5	6	7	8	9	10
Distance	245	224	280	367	399	528	283	461	340	213
Par	3	3	4	4	3	4	3	4	3	4

MATURE TEES	1	2	3	4	5	6	7	8	9	10
Distance	175	190	220	267	316	284	345	156	261	213
Par	3	3	3	3	3	4	3	4	3	3

AMATEUR TEES	1	2	3	4	5	6	7	8	9	10
Distance	124	261	416	325	369	300	350	238	337	261
Par	4	3	4	3	3	4	4	3	4	3

PRO TEES - Par: 75, Distance: 2,740'
MATURE TEES - Par: 75, Distance: 2,740'
AMATEUR TEES - Par: 36, Distance: 1,741'

brec.org **BREC** It all starts at BREC!



FLANNERY ROAD PARK

BREC NEIGHBORHOOD PARK

DESCRIPTION



In November 2012, BREC staff joined volunteers from Humana, KaBOOM, neighborhood residents and community groups to build a new playground. Then in April 2013 Flannery Road Park underwent a master planning process for park renovations. BREC hosted a community open house at the recreation center in order to give residents in the area a

voice in the creation of a master plan. Additionally, the State has added funds to the project increasing the overall renovation budget. Improvements include paved parking with additional ADA parking spaces, neighborhood connector pathways, a walking loop, a sand volleyball court, and a new playground appropriate for 2-5 year olds to play.

FLANNERY ROAD PARK

PROJECT DATE

- 2012 KaBOOM! Playground Project
- 2012 Recreation Center Partial Reroofing Project
- 2014 Phase I Site Improvements

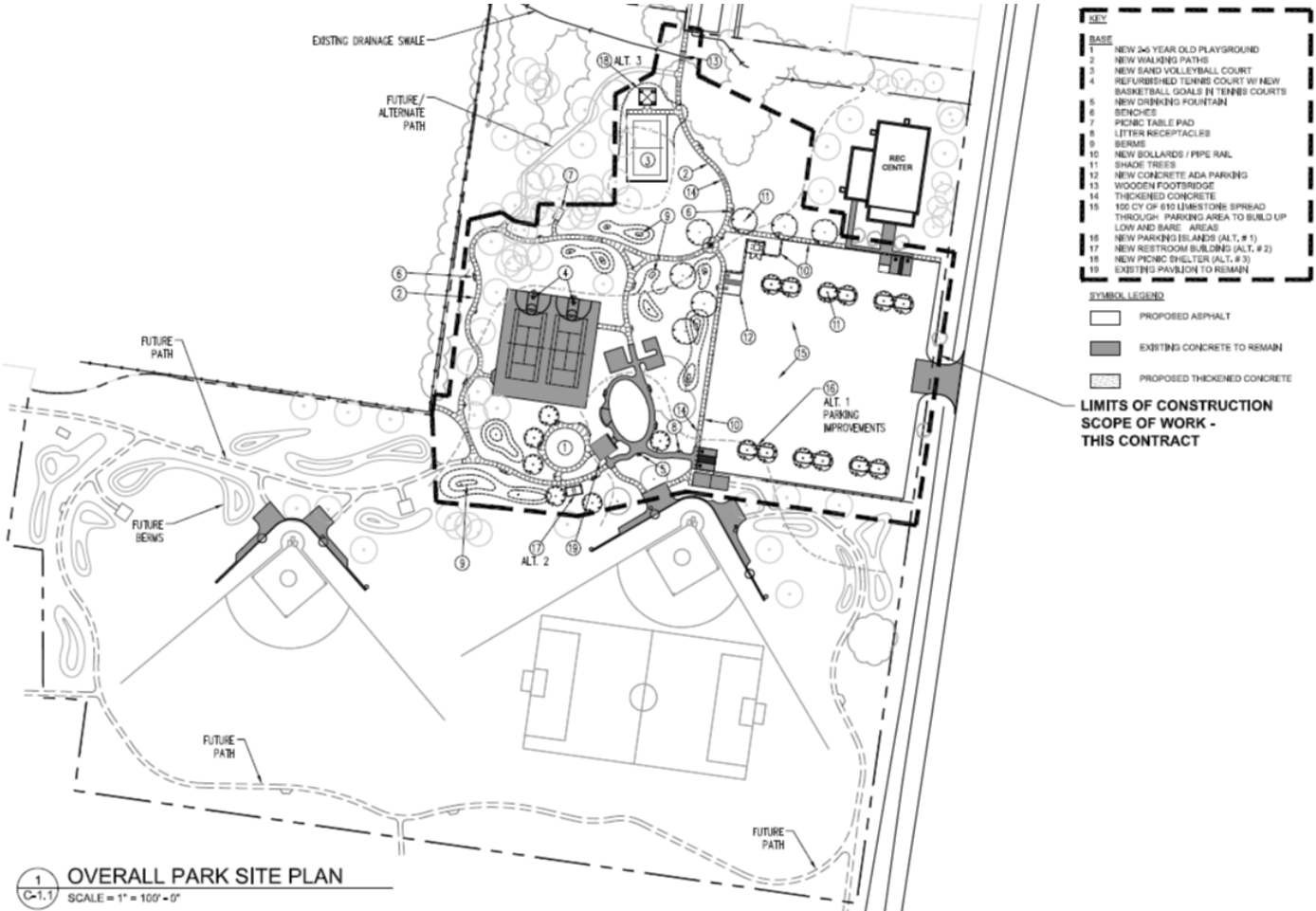
PROJECT COST

- \$60,000 KaBOOM! Playground Project
- \$25,000 Recreation Center Partial Reroofing Project
- \$230,000 Phase I Site Improvements
(\$25,000 Dr Pepper, Snapple Grant for a Playground Shade Structure)



FLANNERY ROAD PARK BREC NEIGHBORHOOD PARK

PROJECT SITE PLAN



1 OVERALL PARK SITE PLAN
 C-1.1 SCALE = 1" = 100' - 0"



FORTUNE ADDITION PARK **BREC NEIGHBORHOOD PARK**



DESCRIPTION

Fortune Addition Park is located at the end of Peerless Street, in Zion City, east of Plank Road. Improvements include new picnic tables and bleachers, refurbished basketball court and ball field and new connector pathways and pedestrian

bridges installed throughout the park making it more accessible to the surrounding community. The new design considers the amenities offered at nearby Cadillac Street Park to help increase recreation options.

PROJECT DATE

2013 Site Improvements Complete

PROJECT COST

\$40,000 Site Improvements

FORTUNE ADDITION PARK



FORTY-EIGHTH STREET PARK **BREC NEIGHBORHOOD PARK**



DESCRIPTION

Forty-Eight Street Park improvements include the removal of an obsolete structure, clearing over grown vegetation encroaching on the basketball court and ball field areas. A sand volleyball court was

put in along with new benches, picnic tables and a grill for family picnics.

PROJECT DATE

2012 Improvements Complete

PROJECT COST

\$25,000 Site Improvements

FORTY-EIGHTH STREET PARK



GOODWOOD PARK **BREC NEIGHBORHOOD PARK**



DESCRIPTION

Goodwood Neighborhood Park underwent a master planning process that consisted of a series of public meetings during which BREC presented conceptual plans and gathered public input to the needs and wants of the community. A master plan reflecting the combined information was then produced. Renovations to this park include a new

playground, benches, drinking fountains, dog waste stations, landscaping and a one-quarter mile walking path with a trailhead connecting to the Sevenoaks walking path. BREC also made improvements to the existing parking areas, tennis court, and picnic areas. Funds for renovations were increased due to the efforts of the neighborhood.

PROJECT DATE

- 04/27/2010 Public Input at Civic Association Meeting
- 2011 Park Construction Complete

PROJECT COST

\$193,500 Site Improvements

GOODWOOD PARK



GUS YOUNG PARK **BREC NEIGHBORHOOD PARK**



DESCRIPTION

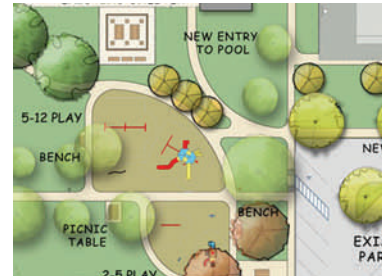
Gus Young Neighborhood Park underwent a master planning process that consisted of a series of public meetings during which BREC provided public input surveys to collect information about the needs and wants of the community, and then produced conceptual plans based on the survey results, and finally a master plan reflecting the

combined information. Park enhancements include improved parking lot with additional spaces added, 1/7 mile exercise loop, new playground featuring separate play areas for 2 to 5 and 5 to 12 age groups, a new outdoor water fountain, benches and landscaping. Improvements to the recreation center and basketball courts are also complete.

GUS YOUNG PARK

PROJECT DATE

- 05/25/2011 1st Public Input Meeting
- 09/28/2011 2nd Follow-Up Public Meeting
- May 2012 Park Improvements Complete
- 06/16/2012 Grand Re-Opening



PROJECT COST

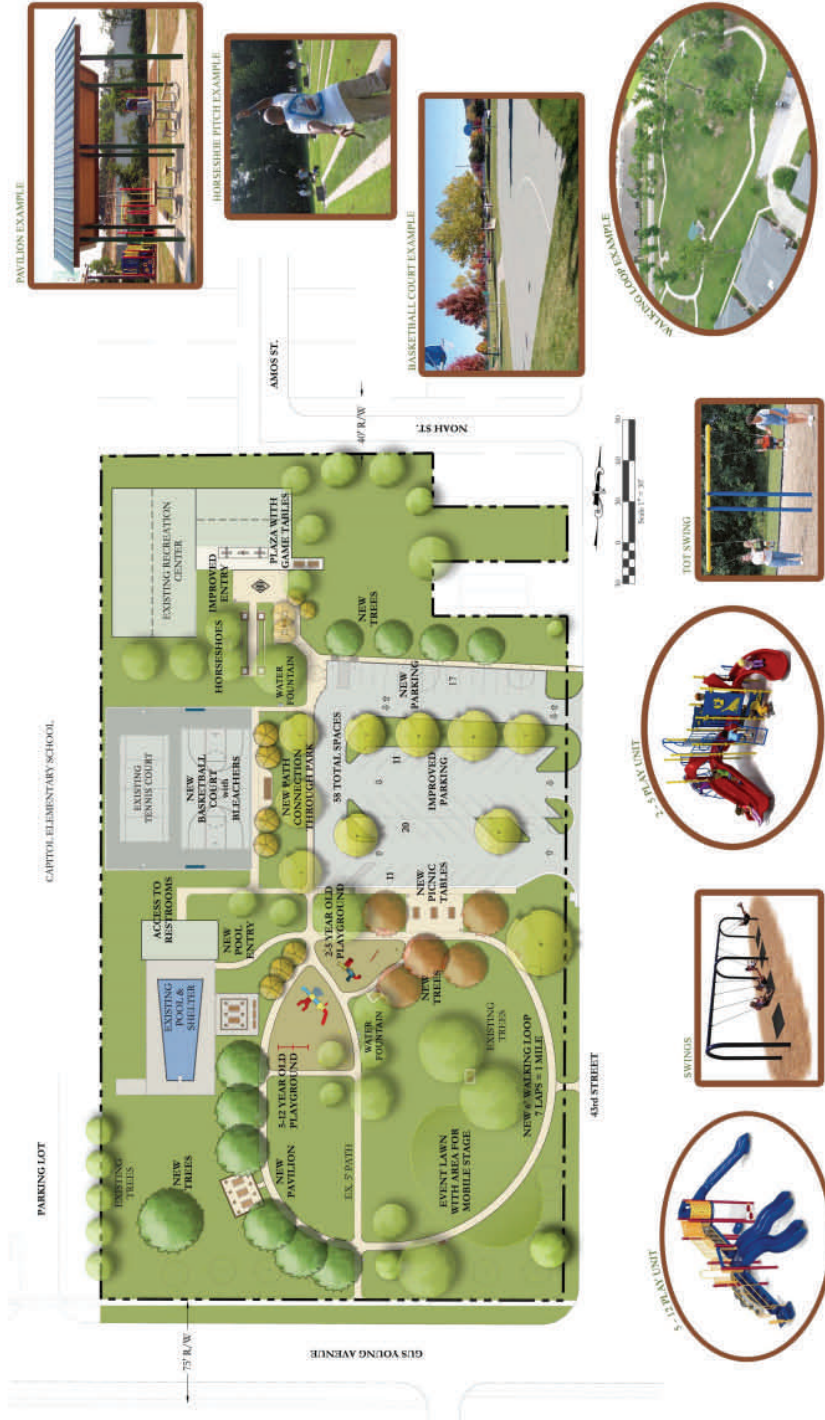
- \$25,000 Pool Improvements
- \$80,000 Recreation Center Improvements
- \$300,000 Site Improvements



GUS YOUNG PARK

BREC NEIGHBORHOOD PARK

PROJECT SITE PLAN



BREC
 BREC Planning & Engineering
 September 28, 2011

THIS PLAN REFLECTS INPUT
 FROM THE FIRST ROUND
 OF PUBLIC MEETINGS

GUS YOUNG NEIGHBORHOOD PARK CONCEPTUAL MASTER PLAN



GUS YOUNG PARK

BREC NEIGHBORHOOD PARK

PROJECT PHOTOS



GUS YOUNG PARK



HAMILTON AVENUE PARK **BREC NEIGHBORHOOD PARK**

DESCRIPTION

Hamilton Avenue Park features a recreation center and a playground with walking paths. The playground was installed in 2005 and features two separate play areas. One is equipped with a 2-5 year old play unit and tot swing. The other area is

equipped with play structures appropriate for children between the ages of 5-12. The park also has walks, benches, trash receptacles strategically placed for your convenience.

PROJECT DATE

2005 New Playground Complete

PROJECT COST

\$40,000 New Playground

HAMILTON AVENUE PARK



HOOPER ROAD PARK **BREC NEIGHBORHOOD PARK**

DESCRIPTION

The park encompasses 232.85 acres of land which is surrounded by Sharon Hills, Cedar Glen and Pleasant Hills subdivisions. It is north of Hooper Road, near the intersection of Mickens Road and Hooper Road. Facilities include a gym, a playground area, tennis courts, two lighted ball fields, and picnic facilities. The park also features 5 miles of mountain biking and hiking trails that winds through the woods and over bluffs. The Baton Rouge Area Mountain Bike Association (BRAMBA) works closely with BREC to help maintain the trails.

Hooper Road Park is undergoing a master planning process for park renovations. Initial ideas being studied are repurposing the non-air conditioned gym into an airnasium that would allow for extended hours of use by the public and creating a centralized gathering place. The site being studied is located near the ball fields and parking lot and may feature a new playground, improved restrooms, relocating the mountain bike trail head with new signage and installing new walks to connect all the new features.



HOOPER ROAD PARK

PROJECT DATE

2013 Trail Improvements

PROJECT COST

\$5,000 Trail Improvements



Existing Gym



Existing Trail Head & Picnic Shelter



Proposed Central Location for New Amenities

Existing Shelter, Ball Fields & Restrooms



JAMES WATSON PARK **BREC NEIGHBORHOOD PARK**



DESCRIPTION

James Watson Neighborhood Park underwent a master planning process in 2013. Improvements include a renovated tennis court, a new playground with picnic tables and benches and new connecting walks. The basketball court was repainted and new bas-

ketball goals/posts installed. The airnasium was found to be structurally deficient and had to be removed. The existing restrooms were restored and it is expected that the airnasium will be rebuilt in the next program.

PROJECT DATE

2013-2014 Renovations Complete

PROJECT COST

- \$60,000 Site Improvements & New Playground
- \$18,000 Airnasium Demolition
- \$22,000 Restroom & Basketball Court Renovations

JAMES WATSON PARK



JEFFERSON HIGHWAY PARK

BREC NEIGHBORHOOD PARK

DESCRIPTION

This was a private establishment before it was acquired by BREC in 1992. It features tennis courts, a playground and recreation center that provides meeting rooms for public use, a prep kitchen, and offices. In 2012 improvements were made to the park that include two new sand volleyball courts, a refurbished basketball court, additional seating and improved drainage. Two public meetings were held during which BREC provided public input surveys to collect information about the

needs and wants of the community, and then produced conceptual plans based on the survey results, and finally a master plan reflecting the combined information. Park enhancements in 2013 include removal of an antiquated swimming pool and removal of portion of the activity center. Site improvements in Phase II include a reception plaza and a new playground with additional improvements to the parking lot in the next program.

JEFFERSON HIGHWAY PARK

PROJECT DATE

2011	Sand Volleyball & Site Improvements
2012	Pool Improvements
2012	Conceptual Master Plan
11/13/2012	Public Planning Meeting
8/28/2013	Public Planning Meeting
2013	Master Plan
2013	Phase I Site Demolition & Drainage
2014-2015	Phase II Plaza & Playground

PROJECT COST

\$35,000	Pool Improvements
\$60,000	Sand Volleyball & Site Improvements
\$10,000	Master Plan
\$77,300	Phase I Site Demolition & Drainage
\$347,195	Phase II Plaza & Playground Site Improvements



JEFFERSON HIGHWAY PARK BREC NEIGHBORHOOD PARK

PROJECT SITE PLAN



- 1 TENNIS COURTS
- 2 SAND VOLLEYBALL
- 3 BASKETBALL COURTS
- 4 IMPROVED PARKING LOT
- 5 AGE 2-12 PLAYGROUND
- 6 THE COVE BUILDING
- 7 COVE PATIO & GAME TABLES
- 8 ARBOR AND SEATING WALL
- 9 RECEPTION PLAZA & STAGE
- 10 OUTDOOR COOKING PAVILION
- 11 1/9 MILE CONCRETE WALKING LOOP
- 12 OLD BLUE ROOM LOCATION
- 13 RENOVATED BUILDING SPACES
- 14 PICNIC PAVILION
- 15 OPEN-AIR RENTABLE SPACE W/ KITCHEN ACCESS
- 16 RESTRICTED MAINTENANCE ROAD
- 17 VENDOR PARKING
- 18 EXISTING PARKING LOT




JEFFERSON HIGHWAY NEIGHBORHOOD PARK - MASTER PLAN
 BREC PLANNING AND ENGINEERING
 AUGUST 2013



JEFFERSON HIGHWAY PARK BREC NEIGHBORHOOD PARK

PROJECT PHOTOS



Sand Volleyball During Construction



New Sand Volleyball



Pool Prior To Demolition



Site After Pool Removal



'Blue Room' Prior To Demolition



View of New Connection to Rear of Park

JEFFERSON HIGHWAY PARK



JEFFERSON STREET PARK

BREC NEIGHBORHOOD PARK

DESCRIPTION

Jefferson Street Park was renovated in 2010. Improvements include renovations to the existing restroom, practice football field, and multi-use court. A new limestone parking lot was constructed near the park entrance and the rear parking lot

was gated off to improve site visibility. Picnic facilities were added along with connecting walkways from the parking lot to the picnic and restroom facilities.

PROJECT DATE

2010 Renovations Complete

PROJECT COST

\$60,000 Site Improvements



JEFFERSON STREET PARK



JEFFERSON TERRACE PARK **BREC NEIGHBORHOOD PARK**

DESCRIPTION

Jefferson Terrace Neighborhood Park underwent a master planning process that consisted of a series of public meetings. BREC then produced conceptual plans based on meeting survey results, and finally a

master plan reflecting the combined information. The first phase has been constructed, consisting of a walking path, new playground, and site amenities.

PROJECT DATE

- 2010 Shelter Renovations
- 2012 Site Improvements

PROJECT COST

- \$35,000 Shelter Conversion
- \$90,000 Site Improvements

JEFFERSON TERRACE PARK



JEFFERSON TERRACE PARK

BREC NEIGHBORHOOD PARK

PROJECT SITE PLAN



*LIMITED FUNDS REQUIRE PHASING OF WORK.
 THE FULL CONCEPTUAL PLAN SHOWN HERE
 CANNOT BE COMPLETED IN 1ST PHASE.
 THE GRAYED OUT PORTIONS ON PLAN WILL
 REQUIRE ADDITIONAL FUNDING.




 BREC Planning & Engineering
 September, 2011

JEFFERSON TERRACE NEIGHBORHOOD PARK
 PROPOSED CONCEPTUAL PLAN



KATHY DRIVE PARK **BREC NEIGHBORHOOD PARK**



DESCRIPTION

Kathy Drive Park is undergoing a master planning process for park renovations. Conceptual Plans were presented at a public planning meeting on October 17, 2013, and the public offered their input. BREC is

currently developing those ideas into a final master plan which will lead to construction of new park improvements.

PROJECT DATE

- October 17, 2013 Public Meeting
- 2014 Master Plan Underway

PROJECT COST

KATHY DRIVE PARK



KATHY DRIVE PARK BREC NEIGHBORHOOD PARK

PROJECT SITE PLAN



- 1 Concrete Path - 1/2 mile circuit
- 2 New Picnic Pavilions
- 3 Sand Volleyball Courts
- 4 New Tree Plantings
- 5 Outdoor Fitness Area
- 6 Improved Existing Playground
- 7 Improved pavilion w/new equipment, walks & safety surfacing
- 8 Bench Locations
- 9 Perimeter Concrete Path 1 mile circuit when combined with 1
- 10 Improved Ballfields
- 11 Spectator Bleachers
- 12 Increased Parking Area w/ sidewalks and curbed islands
- 13 Live Oak Promenade
- 14 Controlled Access Gate
- 15 Grass Berms (rolling topography)
- 16 Open Green Activity Space for day camps
- 17 Passive Open Green Space
- 18 New Bathroom
- 19 New Connection Drive w/ additional parking
- 20 Existing Recreation Center


Park Master Plan - Concept 1
 Kathy Drive Neighborhood Park
 October 2013
 Scale 1" = 40'



KERNAN AVENUE PARK **BREC NEIGHBORHOOD PARK**

DESCRIPTION

Kernan Avenue Park is located in the Mid-City area and features a recreation center, playground and outdoor basketball court. Improvements to the recreation center include new tempered glass backboards with break away rims for the indoor basketball court,

updated light fixtures, and renovated rest-rooms. Additional improvements include improved site drainage, new water fountain near the playground and improved parking area.

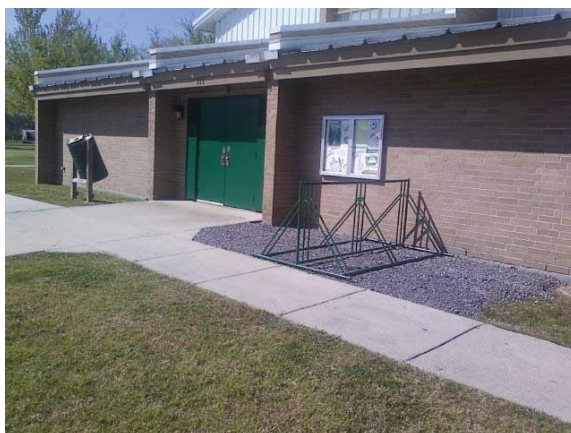
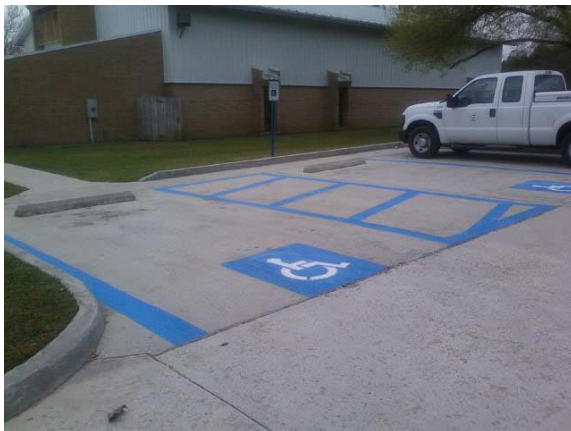
PROJECT DATE

2013 Recreation Center Renovations

PROJECT COST

\$35,000 Site Improvements

KERNAN AVENUE PARK



KERR WARREN PARK

BREC NEIGHBORHOOD PARK

DESCRIPTION

Kerr Warren Neighborhood Park features a playground, recreation center, outdoor basketball, indoor basketball, and a ball field. Recent improvements include renovating the recreation center by

replacing light fixtures, fixing doors, installing new ceiling fans, a bulletin board, and renovating the restrooms.

PROJECT DATE

2013 Site Improvements

PROJECT COST

\$25,000 Site Improvements

\$30,000 Recreation Center Renovations



KERR WARREN PARK



KOLBY PARK **BREC NEIGHBORHOOD PARK**



DESCRIPTION

This small neighborhood park is located in the Central Place subdivision, just off Sullivan Road in Central. It features a playground, a picnic area and a half basketball court. The park was renovated in 2009 with improvements that include a new concrete

walk around the existing playground with new engineered wood fiber safety surface, and a new picnic area. New park signage was installed along with pipe rail parallel to the roadway.

PROJECT DATE

2010 Site Improvements Complete

PROJECT COST

\$50,000 Playground Improvements

KOLBY PARK



LAFITTE STREET PARK **BREC NEIGHBORHOOD PARK**



DESCRIPTION

Lafitte Street Park is located south of Florida Boulevard in the Donwood subdivision. There is a playground area, a ball field, a tennis court and a picnic pavilion. Improvements include refurbished tennis

court, ball field, new benches and picnic tables. Improvements were made to the parking area and restrooms.

PROJECT DATE

2010 Park Renovations

PROJECT COST

\$10,000 Site Improvements

LAFITTE STREET PARK



LEBRENT AVENUE PARK **BREC NEIGHBORHOOD PARK**



DESCRIPTION

Alaska change This neighborhood park is located in Brentwood subdivision. It has a playground, and picnic pavilion with restrooms. Improvements to Lebrent Avenue park include refurbished restrooms,

new benches and picnic tables throughout the park and the picnic pavilion was freshly painted.

PROJECT DATE

2012 Site Improvements

PROJECT COST

\$15,000 Renovations

LEBRENT AVENUE PARK



LEEWARD DRIVE PARK **BREC NEIGHBORHOOD PARK**

DESCRIPTION

Leeward Neighborhood Park is located in the University Acres Subdivision near Highland Road. Park improvements include a new playground for ages 2-12, a new walking path making the park accessible, and a new picnic shelter. Thanks to the University Acres

Civic Association, the University Acres residents, and friends of the park for their contribution toward the safety surface improvements, the playground received synthetic playground grass by Forever Lawn.



PROJECT DATE

2008-2009 New Playground Construction

PROJECT COST

\$65,000 Playground Renovations

LEEWARD DRIVE PARK



LIGON ROAD PARK **BREC NEIGHBORHOOD PARK**



DESCRIPTION

Ligon Road Park is located in the Zachary area. Site improvements in 2012 include renovating the multi-use court into a full basketball court, the ball field was fully renovated, the picnic tables

and benches received new wood boards. The restroom was freshly painted and the picnic pavilion refurbished.

PROJECT DATE

2012 Improvements Complete

PROJECT COST

\$25,000 Site Improvements

LIGON ROAD PARK



LONGRIDGE PARK **BREC NEIGHBORHOOD PARK**

DESCRIPTION

Longridge Park is located near South Sherwood Forest Boulevard and features a playground, tennis court, picnic shelter and basketball court. Improvements to the neighborhood park in 2009

include a new half basketball court with connecting walks, signage and site drainage. Improvements were also made in 2013 to include some playground work, additional benches and new signage.



PROJECT DATE

- 2009 Half Basketball Court
- 2013 Site Improvements

PROJECT COST

- \$45,000 Site Improvements

LONGRIDGE PARK



LOVETT ROAD PARK **BREC NEIGHBORHOOD PARK**



DESCRIPTION

Lovett Road park is located in the City of Central. The neighborhood park has a recreation center with side rooms for classes and meetings. A new playground was installed near the center with additional ADA accessible parking. The

baseball complex includes 10 improved ball fields with electronic score boards, and a new restroom building. A new turning lane was constructed in 2009 to improve vehicle circulation at the park.

PROJECT DATE

- 2006 Ball Field Improvements
- 2009-2010 Playground, Road, Parking, Restrooms

PROJECT COST

- \$60,000 New Ball Fields
- \$20,000 Parking Lot Addition
- \$40,000 Ball Field Improvements
- \$5,000 Electronic Score Boards
- \$55,000 New Restroom Building
- \$15,000 Additional ADA Parking
- \$35,000 New Turn Lane At Entrance
- \$80,000 New Playground

LOVETT ROAD PARK



LOVETT ROAD PARK

BREC NEIGHBORHOOD PARK

PROJECT PHOTOS



MAPLEWOOD PARK **BREC NEIGHBORHOOD PARK**

DESCRIPTION

Maplewood Neighborhood Park Facilities include a recreation center, a playground, a ball diamond, a picnic area, tennis courts, a basketball court, and open space for sport activities. A new gym floor was installed in 2006. Other park improvements completed

in 2008 include a new playground for ages 2-12, a refurbished tennis court and new walks connect all park amenities making the park handicapped accessible.

PROJECT DATE

- 2006 New Gym Floor
- 2008 Playground Improvements

PROJECT COST

- \$40,000 New Gym Floor
- \$75,000 Playground Improvements

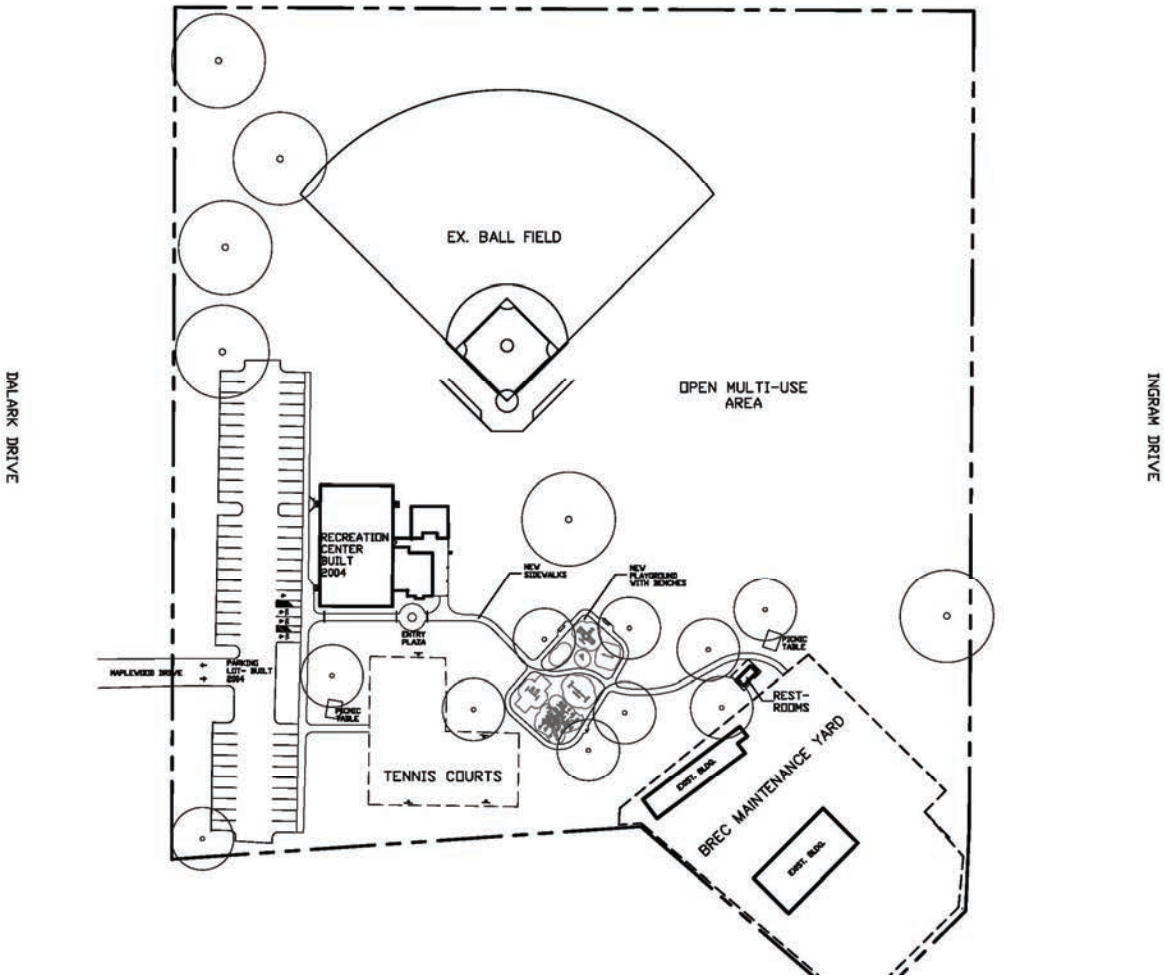


MAPLEWOOD PARK



MAPLEWOOD PARK BREC NEIGHBORHOOD PARK

PROJECT SITE PLAN



MARY J LANDS PARK **BREC NEIGHBORHOOD PARK**



DESCRIPTION

Mary J Lands Park , formerly known as Progress Park, is located in the Eden Park. Facilities at the neighborhood park include a ball field, a basketball court, and picnic area. The playground was installed in 2001 and features two play areas. Recent

renovations to the park include a refurbished basketball court and ball field backstop. The restroom and picnic pavilion will be fully renovated by Early 2014. The roof replaced, new restroom fixtures, electrical wiring and the building freshly painted.

PROJECT DATE

2013 Renovations

PROJECT COST

\$35,000 Site Improvements

MARY J LANDS PARK



MAYFAIR PARK **BREC NEIGHBORHOOD PARK**



DESCRIPTION

Mayfair Park improvements were completed in 2006 and include a new playground, site drainage, a refurbished tennis/multi-use courts and a new picnic shelter with tables. New walks connect all

park amenities making the park fully accessible, additional parking added and improvements made to the recreation center.

PROJECT DATE

2006 Site Improvements

PROJECT COST

- \$85,000 Design and Construction
- \$15,000 Old Court Demolition
- \$35,000 Parking Lot Addition

MAYFAIR PARK



MILFORD WAMPOLD MEMORIAL PARK **BREC NEIGHBORHOOD PARK**

DESCRIPTION

Located along Stanford Avenue on the LSU Lake, Milford Wampold Memorial Park is a popular spot for recreational activities for the entire family. There are accessible fishing piers, canoe launch, a sandy beach and picnic areas. The park was completely revamped in 2009

with improvements to the parking area that included a new asphalt parking lot reconfigured to provide more green space in the park, a new stretching station, a new pedestrian bridge and a multi-use trail.



PROJECT DATE

- 2008-2009 Phase I Improvements
- 2008 Canoe Ramp

PROJECT COST

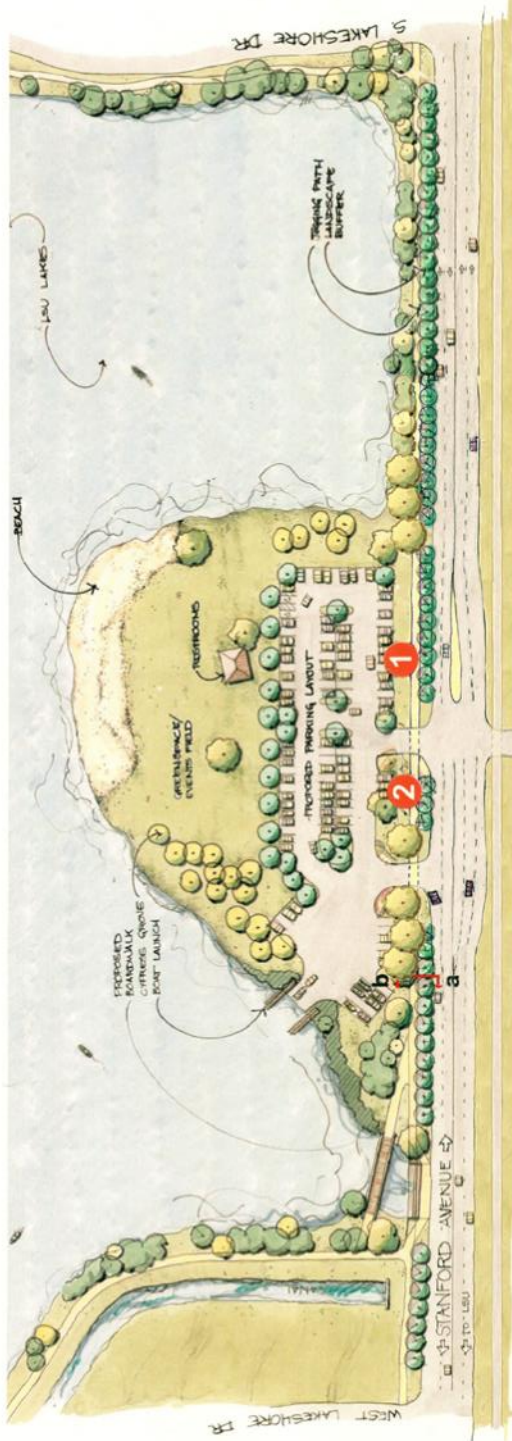
- \$730,000 Phase I Improvements
- \$5,000 Canoe Ramp

MILFORD WAMPOLD MEMORIAL PARK

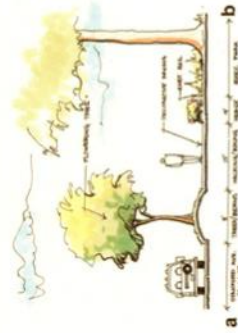


MILFORD WAMPOLD MEMORIAL PARK BREC NEIGHBORHOOD PARK

PROJECT SITE PLAN



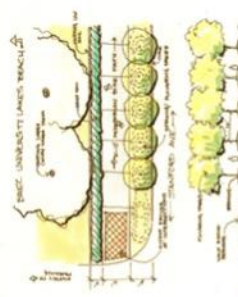
Master Plan
1"=50'
N



Section a-b Reich Assoc.



2 Sketch Reich Assoc.



1 Detail Plan Reich Assoc.



CONCEPTUAL MASTER PLAN: PHASE I
OCTOBER, 2005
STANFORD AVENUE PARK / BATON ROUGE BEACH
PARKING COUNT: Current : 119
Proposed: 115

EAST BATON ROUGE PARISH RECREATION & PARK COMMISSION
PLANNING & ENGINEERING DEPARTMENT
BATON ROUGE, LOUISIANA



MILFORD WAMPOLD MEMORIAL PARK

BREC NEIGHBORHOOD PARK

PROJECT PHOTOS



MILFORD WAMPOLD MEMORIAL PARK



MILFORD WAMPOLD MEMORIAL PARK

BREC NEIGHBORHOOD PARK

PROJECT PHOTOS



MILFORD WAMPOLD MEMORIAL PARK



MILTON WOMACK PARK **BREC NEIGHBORHOOD PARK**



DESCRIPTION

The land and existing building were donated to BREC for administrative offices and park land in 2003. The building is completely remodeled and houses BREC Eugene A. Young Administrative Offices, Commission meeting rooms since 2007.

The facility also features a community fitness center, Womack Interactive Warehouse, day camp space, adult leisure programming and a rentable spacious ballroom.

PROJECT DATE

2004-2007 Building Renovations

PROJECT COST

- \$335,000 Demolition & Abatement
- \$6,450,000 Building Renovations
- \$650,000 Park Development & Site Work
- \$15,000 Interactive Pilot Space

MILTON WOMACK PARK



MONTE SANO PARK **BREC NEIGHBORHOOD PARK**



DESCRIPTION

Monte Sano Park improvements include a new playground with safety surfacing, new connecting sidewalks, new signage new benches, new basketball goals, a refurbished ball field and site drainage. The recreation center was

completely remodeled. New exterior doors installed, the restrooms remodeled, and the center interior and exterior painted. In 2013, a new playground was constructed with connector walks and additional site furnishings.

PROJECT DATE

- 2012 Recreation Center Renovations
- 2013 Additional Site Improvements Including A New Playground

PROJECT COST

- \$64,000 Recreation Center Renovations
- \$45,000 New Playground & Site Improvements

MONTE SANO PARK

